

Planting Suggestions for GARDEN LOVERS

All the family can join in the delight of growing a garden... and certainly all the family will profit by its completion, and revel in its beauty. For the children there will be outdoor play and wonders of nature. For the grown folks there will be exhilarating exercise and the delight of creating growing things. Make yours a gardening family, and you will have a healthier, happier family than ever!



Clarkias and Godetias Thrive in Poor Soil



Two brilliant annuals not so often grown but deserving of wide popularity in the garden are the clarkias and godetias. They are both members of the evening primrose family and have the satiny texture to their bloom that is so characteristic of the many plants of this tribe.

they become lazy and fail to give their best bloom. If you have a patch of ground which other plants find too meager, plant one or both of these brilliant annuals.

The clarkias have been taken up by the greenhouse men and are now popular for winter cut flowers, but they are just as handsome in the garden and very easily grown there. The double varieties are best for cutting. They range in color from white through light and deep pink to orange scarlet.

The godetias have large blooms of more brilliant coloring, and often have splashings of color on light backgrounds to make them more striking in appearance. The gladiolus-flowered forms make the best cutting material.

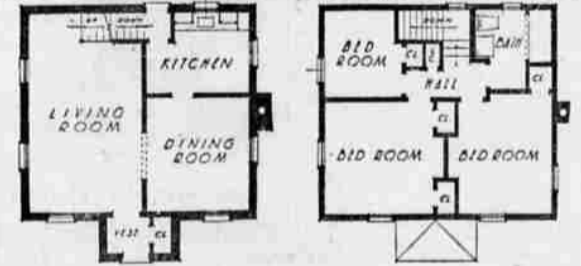
Sow seeds thinly in the situation they are to grow, then, thin the plants to stand about eight inches apart.

The gladiolus-flowered forms, which come from England, are improvements on an old double form named Malmalson, a favorite for cutting because of its fine spikes of double bluish flowers with scarlet centers. They grow to a height of two feet and are one of the best.

There are dwarf forms of both flowers that make very attractive little bushes, and the godetias come in both double and single forms.

Other annual flowers which will grow well in poor soil are verbenia, rudbeckia, portulaca and euphorbia.

Conveniences Are 'Built-In'



FIRST FLOOR SECOND FLOOR

This two-story house presents one of the variations of a group in an operative-built development on Long Island, N. Y.

The architect, Arthur E. Allen, while keeping the basic design and floor plans for each, has managed to provide variety by innovations in the exterior. The house is one of a series of low-cost dwellings chosen by "The Architectural Record."

The roof is of slate, with leaders and gutters of copper. There is metal weather-stripping on all windows, three coats of plaster on the

BIRTHS

Born to Mr. and Mrs. Dorrance Hayes, a son weighing six and a half pounds, Friday at the Osteopathic Clinic. Both mother and son are doing nicely.

ETHELWYN B. HOFFMANN'S.

Advertisement for Easter Gifts and Swem's seeds, featuring a rabbit illustration and text about thoughtful gifts and seed quality.

Sow Spinach for Fast Growth



THE NEW AND IMPROVED STRAIN OF THICK LEAVED SPINACH HAS BECOME A FAVORITE WITH THE HOME GARDENER.

One of the first spring operations in the vegetable garden is sowing the seed of spinach. This fast-growing, hardy edible can be put into the ground as soon as the soil drains enough so that it can be worked, and will be ready for the table with the earliest radishes and the leaf lettuce.

But a "crop of spinach doesn't pay," say a few housewives. Let them grow a crop of the new spinach and find out for themselves, for the new thick-leaved varieties are so far superior to the ordinary run of the garden types which are found on the market, that they are almost entirely new vegetables.

Like many other vegetables, spinach must be given the attention which only the amateur with a small garden can give it. The old-time method of broadcasting seed as if sowing a lawn and letting the plants shift for themselves never gave the best results and is even worse for the heavier leaved types than it was for the old-time skimpy types.

For best results plant in rows, thin to 6 inches apart, and each spinach plant will produce a huge rosette of leaves. By this method the plant can be made to do triple duty by cutting the leaves and letting them grow more, instead of piling it up bodily as is usually the custom, thus limiting each plant to a single crop. Make the soil as mellow and rich as possible for spinach. It is a short season crop and all short season crops must make speedy growth to produce best results. Warm sandy soil which has been well supplied with plant food is ideal for a good stand. Cultivation speeds the growth.

Spinach seed can be sown just as soon as the soil is in condition, regardless of late frosts. It can even be sown in the fall and allowed to come up in the spring as soon as germinating weather arrives. Get the seed in early, thin the plants carefully, cultivate, and fertilize with 4 pounds of plant food for every 100 square feet of area, and you will have a surprising yield of real greens.

Make sure you buy one of the new types. Some have more heat resistance than others. If you have a light warm soil or a southern clope to your garden where it gets the full force of the sun the better heat-resisting types will be best for you.

New Seed Novelties Available in City. Miracles of bursting buds, mistleal dealers. In fact, garden lovers

ing color—rarest fragrance—that is what is in store for home gardeners who are busy these days preparing for the coming growing season. Varied and interesting are the latest novelties being introduced for the first time at the seed displays at local dealers. In fact, garden lovers more and more are discovering that they can get practically every kind of seed they could possibly desire right here at their own neighborhood dealers.

Many gardeners claim that this is by far the most satisfactory method of buying seeds, due to its convenience and ease of selecting for color combinations from the actual colors displayed on many of the packets. One of the largest Pacific coast seed producers, offering its catalogue through the mail as an aid to garden planning, urges seed buyers to make their seed selections at their own neighborhood dealers.

LAMSON REUNITED WITH HIS CHILD

PALO ALTO, Cal., April 4.—(UP)—David Lamson, victorious in a three-year fight against charges of wife murder, gave his first full day of freedom today to his 5-year-old Genevieve Aliene, whose hair and eyes are the color of the hair and eyes of her dead mother, Aliene Thorpe Lamson.

Still uncertain what his future course will be, still reluctant to peer very far ahead, Lamson set out first to make up for the things the little girl had lost in three parentless years, during which she was told that daddy and mamma were away on a long trip.

Daddy returned yesterday, and there was a joyous reunion, between the tall dark-haired father and the grey-eyed little girl. It took place at the home of relatives less than an hour after Santa Clara county dropped the charge of murder against the former Stanford university campus leader.

HEALTH ASSOCIATION TO MEET IN J'VILLE

JACKSONVILLE, April 4.—(Sp.)—An interesting meeting of the County Health Association will be held Tuesday, April 7 at the home of Mrs. Clinton Smith here. A cordial invitation has been extended to all those interested in health work. A covered dish luncheon will be served at 12:30.

Last War Widow Of 1812 Succumbs At Advanced Age

FRANKLIN, W. Va., April 4. (AP) Mrs. Lydia Ann Graham, 98, known as "the last widow of the war of 1812," died at her home near here yesterday.

The veterans' bureau last year described Mrs. Graham as the one person receiving "a pension in the year ending June 30 for services rendered in the war of 1812."

She was the widow of Isaac Graham, a drummer boy in the war. Her husband died in 1881.

SCOTTISH RITE Special Lodge meeting 7:30 P. M., April 6th, 14th degree. Dinner at 6:30 P. M. J. P. LAWRENCE, V. M.

Advertisement for Ore and Bullion, featuring a star logo and text about gold and silver purchases.

At Free Methodist



Rev. James H. Taylor, missionary returning to China, will speak at the Free Methodist church tonight. Rev. Taylor is a grandson of James Hudson Taylor, founder of the China Inland Mission. He expects to resume duties in the Orient in June.

Pistol Display Wins Jail Stay

ASTORIA, Ore., April 4.—(AP) Police hustled John W. Smith, 44, Crown-Willamette logging camp employee, into the county jail for brandishing a loaded pistol and uttering threats in the vicinity of the jail.

There he joined a number of the 35 men charged with a riot for an attack March 7 on the camp where he worked.

FISH CONDITIONS NONE TOO GOOD IS JANOUCH'S WORD

The following fishing and sport review was issued today by Karl L. Janouch, supervisor of Rogue river national forest:

"Fishing conditions are none too favorable for the first of the season, April 5. The storm which occurred March 30-31 has raised the water in all streams. This applies to all tributaries of the Rogue river above Prospect and both branches of Butte creek. The main Rogue river below Prospect, though high, is believed to be fair fishing for steelheads. They are spawning in Elk creek and considerable number of trout have been seen on those spawning grounds.

"High muddy water from the melting snow prevails in all streams in the Butte Falls area. "All lakes except Squaw lake are frozen over. There are no boats available as yet at Squaw lake with the exception of one at Little Squaw lake. This may be rented for 25c per hour. Fishing should be fair in both lakes.

"Unless the weather warms up considerably by the 8th, fly fishing is not expected to yield any results. Night crawlers or eggs will probably be necessary in all streams. Spinners and plugs were taken last year at Squaw lake in the early season. "The lower roads in the Applegate territory are in fair condition. The Squaw lake road is impassable for the last 2 1/2 miles. All roads above Butte Falls are in poor condition. "The Crater lake highway is open to travel. The road to Dead Indian Soda Springs (north fork of Little

Butte creek) is open but very rough and muddy on the upper end. The Elk creek road is in good shape to Bitter Lick bridge. Chains should be part of equipment when traveling all roads off the main traveled routes. SALEM, April 4.—(AP)—Oregon's scenic and recreational resources will be placed before the motoring public of the United States in the form of attractive booklets now being distributed. The state highway department is printing 40,000 of the "Drive Oregon Highways" publication.

You get Tested Seeds in 36

Advertisement for Diamond Quality Seeds, featuring a grid of seed packets and text about testing seeds for quality.

Advertisement for Diamond Quality Seeds, featuring a large graphic of a seed packet and text about the quality and variety of seeds.

Large advertisement for Diamond Briquets, featuring a cartoon character, a large graphic of a briquet, and text about the product's quality and price.

Advertisement for real estate, featuring a large house illustration and text about buying while prices are down.

Advertisement for O. T. Gage, featuring a logo, text about motor winding service, and contact information for Delco and Gage Electric Motor Service.

Large advertisement for the Medford Realty Board, featuring a logo, text about real estate services, and a call to read classified ads.