

AUTOMOTIVE NEWS

ANNOUNCE LARGE PLYMOUTH MODEL

DETROIT—(Sp)—A seven-passenger car in the low price field is announced by the Plymouth division of the Chrysler corporation, to meet the demand of large families for a car that is at once large and economical. The new model is already in production and shipments are being made to dealers.

A wheelbase of 125 inches and an overall length of 203 1/2 inches make possible the increased passenger capacity. The two folding seats are 19 1/4 inches wide and 14 inches deep. The backs of these seats are 19 inches high, giving firm support and eliminating the need for sitting up "as straight as a stick." When not in use, the folding seats fit snugly behind the front seat. Individual foot rests add to the comfort of the rear passengers.

Both front and rear doors are six inches wider than other models. Correspondingly larger windows provide maximum visibility for the rear seat passengers. A built-in trunk accommodates luggage and enhances the smart appearance of the car.

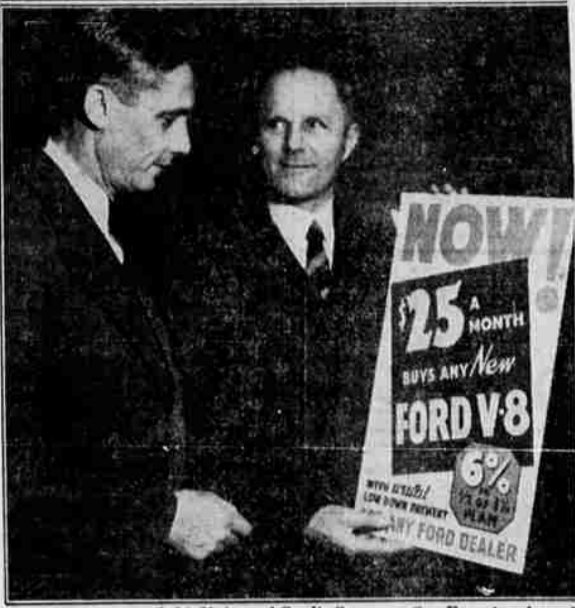
The same economical, simple L-head engine found in other deluxe Plymouths powers the new seven-passenger model. Equal pressure hydraulic brakes, safety steel body and non-glare headlights are among its safety features.

Plymouth sales officials report a brisk demand for the seven passenger deluxe sedan among large families and as a chauffeur-driven car. The new Plymouth is available in six standard colors: black, midday blue, Palm Beach gray, Plymouth blue, aquamarine and gunmetal.

Fuel in the form of coal, natural gas and wood is plentiful in Oklahoma, with many communities having a supply of all three.

My personal attention given to watch repairs, factory style workmanship, reasonably priced and thoroughly guaranteed. Jno W Johnson

CAR OWNERSHIP EASY



Robert Turner, (left) Universal Credit Company San Francisco branch manager, discusses his company's new easy payment plan now in effect for Ford V-8 cars with C. A. Bullwinkel, Richmond branch manager of the Ford Motor Company. The latter holds up a placard which tells the story of this sensational new plan in a few words.

Western Auto To End Anniversary Sale On April 4

There are only a few more days to take advantage of the many special savings on tires, batteries, oil and accessories being presented in the twentieth anniversary celebration event of the Western Auto Supply company, according to Charles Pritchett, local manager, who advises motorists that the event closes on Saturday, April 4.

"Probably one of the most popular features of our great celebration is the special trade-in allowance on old tires, offered to purchasers of new Western Giants," he declares. "Hundreds of thousands of western motorists prefer these tires, and with the current special offer in effect many of them are equipping their cars 'all around' with Western Giants.

"Among the principle reasons for the widespread favor which these tires have won, is the low prices, and high standards of quality, which motorists have learned to expect of these tires. Then, too, there is the fact that every Western Giant is back by an all road hazard guarantee backed by service at more than 170 stores in the west," the Western Auto manager adds.

The different tires included in this event are the Super Whipcord, the Western Giant Double Duty, the Western Giant Center Traction and the Traveler. The Super Whipcord, according to the manager, is the most distinctive tire in America, scientifically designed to add beauty

to the passenger car, and to give more miles of motoring comfort and safety. The Double Duty is a rugged tire, built to give extra service. The Center Traction passenger car and truck tire is a lower priced non-skid tire of established dependability, while the Traveler is a stoutly built tire at rock bottom prices.

In addition to the greater savings on tires, thousands of motorists are also availing themselves of the extra savings on batteries, oil and other motoring needs before the event closes.

SAFETY DEPOSIT BOXES
For rent at Lawrence's, Former Jackson Co. Bank Vaults, 8 a. m. to 5:30 p. m. — Longer hours and less money.

WINDOW GLASS—We sell window glass and will replace your broken windows reasonably. Truettberg Cabinet Works

ADVENT CHRISTIANS WILL HOLD REVIVAL

A revival campaign will be held at the Advent Christian church beginning Sunday with Dr. R. T. Barnes of Somerville, Mass., in charge. It was announced today.

"The announcement said this is 'not a revival of sectional rivalry and animosity but of genuine holy spirit power to get the people purified without spot or wrinkle, ready to greet their coming Lord.'"

Dr. Barnes was described as a revivalist of eloquent persuasion.

I have decided not to run for county commissioner and give my support to Billings. Cad Ely's (paid adv.)

Summertime Is Seat-Cover Time

SEAT COVERS

Tailored To Fit Your Car
Neat, Economical and Cool

HOHLWEG'S TOP SHOP

The Finest Materials and the Fairest Prices
Bartlett at Eighth. Phone 687

Elaborate Setting For Operetta at Junior High Friday

The scene for the Medford Junior high operetta, "The Purple Pigeon," to be given next Friday evening, takes place in the "King's Courtyard." The courtyard is bordered by foliage consisting of beautiful flowers, trees, and large and small ferns. The court is set off from the adjoining buildings of the palace by a tall stone wall. A tower is located at the right corner of the courtyard. From this lofty location the ill-fated cap-

tain of the tower guard watches over the palace and courtyard.

Miss Elizabeth Crisell, art supervisor of Medford schools, is directing painting of the scenery and is being assisted by pupils in the art classes of Junior high.

Mr. Fitch, manual training instructor, is directing construction of stage and scenery, assisted by boys of the manual training department.

Kickerneck Slips Tailored and Lace \$1.95 to \$4.95
ETHELWYN B. HOFFMANN'S.

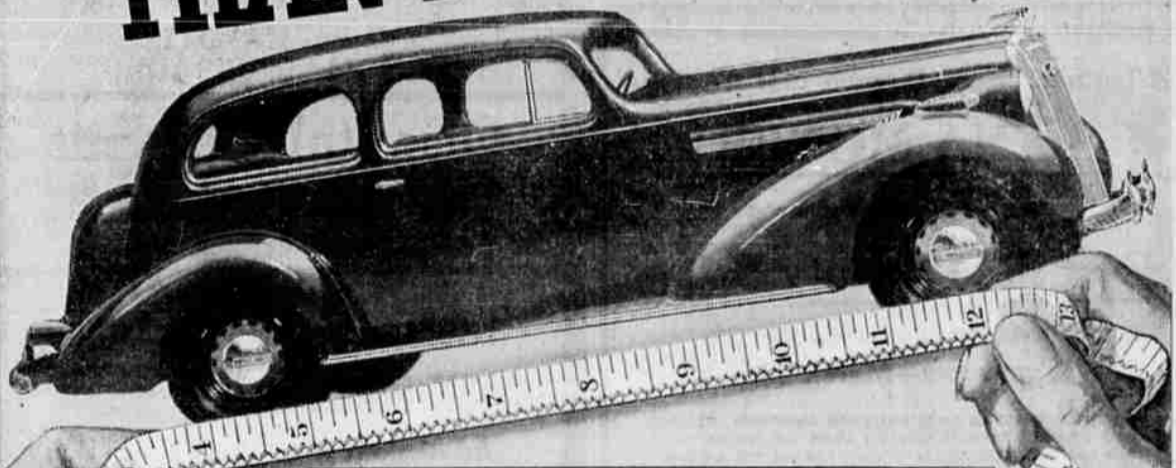
Buckingham's Ice Cream, Candy & Party Specials The Crest, 230 S. Cent.

BRAKES RELINED!

81¢ PER WEEK

Firestone

COME SEE A CAR THAT'S BIGGER THAN ITS INCHES!



A SIXTEEN-FOOT tape won't measure the bumper-to-bumper stretch of a Buick Special and a yardstick gets lost in its back-seat head-room space.

What gauge have you for pride of ownership, or your wife's delight in a car that is more manageable than her knitting needles?

The Buick Special is what the trade calls "a big package." It offers much in measurable things, more than holds its own in side-by-side comparison.

But it has an extra edge in the eloquent fact that it's a Buick—and we'd like to show you how that makes it bigger than its inches.

But what yardstick have you for power so smooth, so quiet, so effortless that only the song of the wind in your ears tells you how swiftly you are flying?

How can you measure steadiness, and that down-to-earth sort of road-hugging travel that makes you feel so much more secure in a Buick, no matter what your pace?

\$1029

to \$2400 are the delivery prices of the new Buicks in Medford, Ore., subject to change without notice. Standard and special accessories groups on all models at extra cost. All Buick prices include safety glass throughout as standard equipment. Ask about the new OMAC

6% EASY PAYMENT PLAN
Compare Buick's low delivered prices and low monthly payments

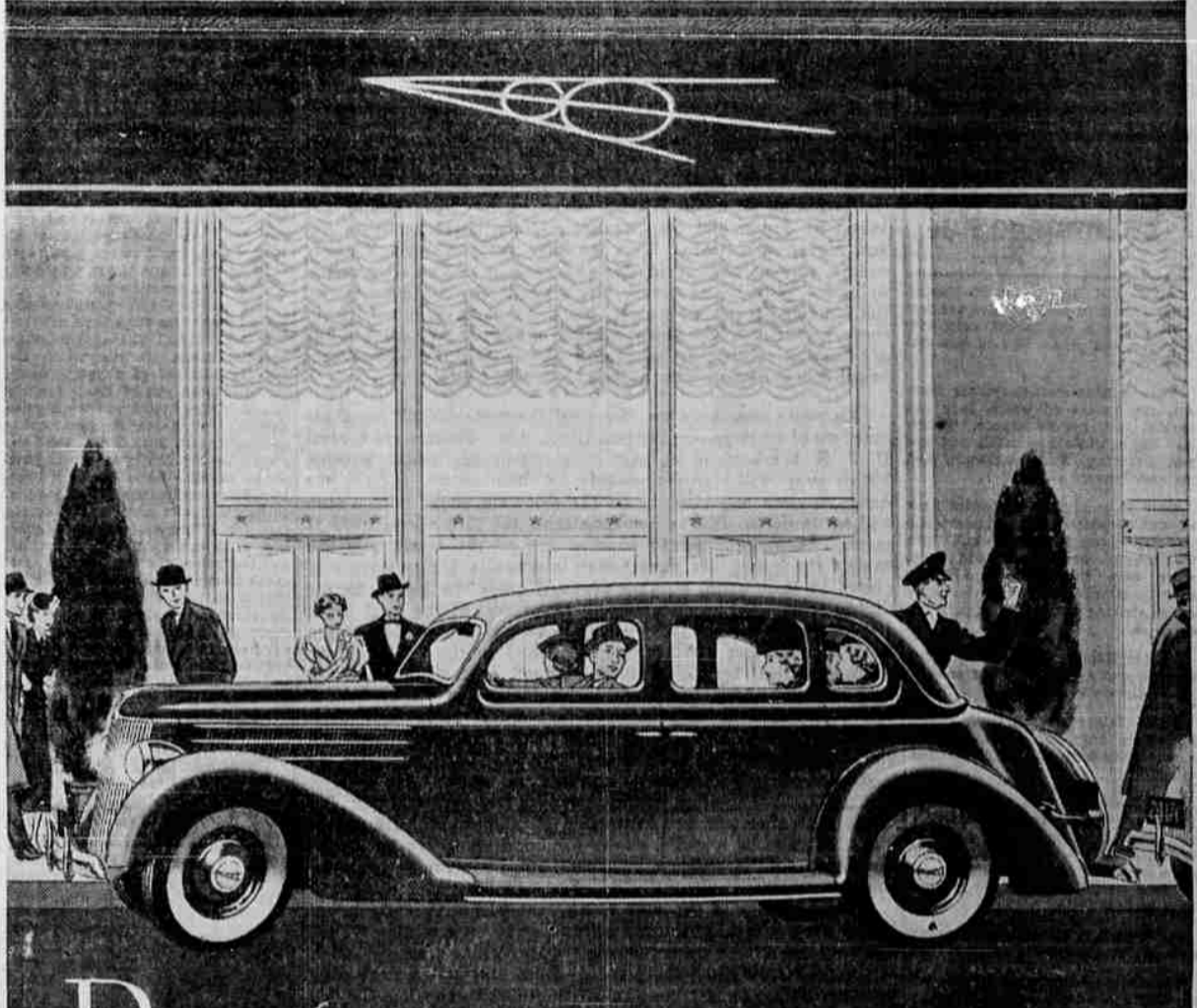
"Buick's the Buy"

A GENERAL MOTORS PRODUCT

SKINNER'S GARAGE

143 South Riverside—Phone 102

WHEN BETTER AUTOMOBILES ARE BUILT, BUICK WILL BUILD THEM



Built to give you years of good service at low cost

THE ASSURANCE we offer you is not in words only—it is built into the very substance of the Ford V-8 itself. The Ford name is your certificate of quality and the car is its proof. It will serve you faithfully, economically and well for many thousands of miles.

Ford policy builds soundly and substantially, in the interest of the public. There are no experiments. Improvements are made on the firm foundation of experience. Everything new must prove its genuine value and lasting benefit before it is put into production.

A consistent plan controls all Ford manufacturing. There is no confusion in design or contradiction in practice. Certain proved principles are carried out in the Ford, the Lincoln, and the Lincoln-Zephyr. These three cars differ in price and purpose, but they are alike in important fundamentals. All have a full torque-tube drive . . . safe, sure mechanical brakes

actuated by solid-steel brake rods . . . double-acting shock absorbers . . . steel wheels . . . and Safety Glass throughout at no additional cost. All have the V-type engine.

By concentrating on this one type of engine, the Ford Motor Company has brought it to a new peak of efficiency. And created new, higher standards of motor car value.

"V-type" is the distinguishing mark of the world's finest power plants—on land, on water and in the air.

Precision Manufacture

Ford, Lincoln and Lincoln-Zephyr motor cars are made to unusually close precision limits and all to the same standards of mechanical accuracy. Inspection and production gages are checked constantly by Johansson Gage Blocks, recognized as the world's standard of measurement.

FORD V-8 FOR 1936

LOW FIRST COST, CONVENIENT TERMS—SEE THE NEAREST FORD DEALER ABOUT \$25-A-MONTH TIME PAYMENTS AND NEW UCC 4% PER MONTH FINANCE PLANS

See the 1936 FORD Now On Display

C. E. GATES AUTO CO.

FORD - LINCOLN - ZEPHYR Sales and Service

Sixth and Riverside YOUR FORD DEALER Phone 141