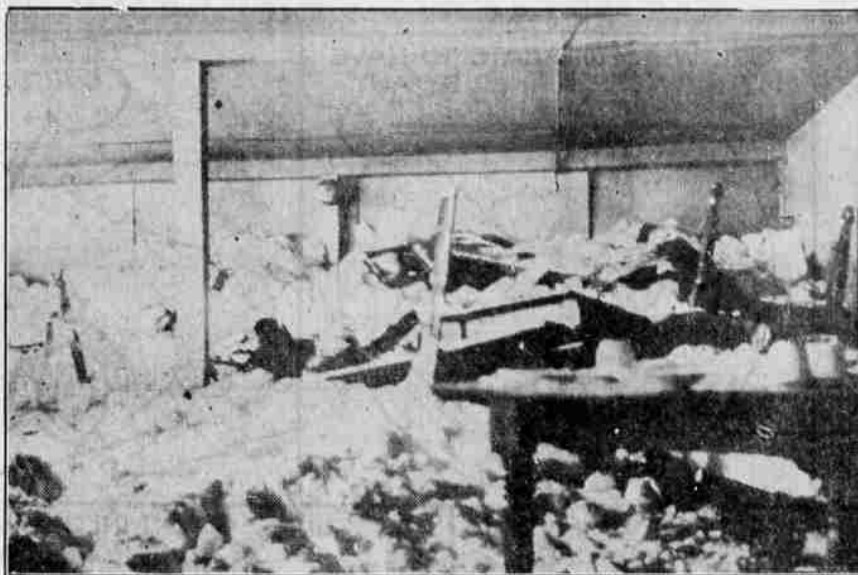


OUT TO TRY AGAIN IN 1936



Lou McEvoy (left) and the veteran Sam Gibson (right) are two members of the 1936 pitching staff of the San Francisco Seals. Though the Seals copped the Pacific Coast league pennant last season, a tougher road is forecast for the 1936 season. (Associated Press Photo)

HOW SLIDE KILLED THREE IN MINE CAMP



Here is how a snow slide at the Camp Bird mine near Ouray, Colo., smashed through the side of a bunkhouse to kill three workers. The furniture crushed by the avalanche may be seen sticking up through the snow which poured into the building. (Associated Press Photo)

STEEL HELMETS BACK ON WESTERN FRONT



German and French troops again faced each other, for the first time since the World War, as a result of Adolf Hitler's sudden military reoccupation of the Rhineland. Here are two among the first photographs of the warlike moves to reach the United States. Top, helmeted Nazi troopers goose-stepping into Cologne, their faces smiling and breechcloths polished. Bottom, French soldiers, bayonets fixed, leaving Metz for stations on the east fortifications of the bristling Maginot line in grim answer to Germany's defiance of the Locarno Pact. (Associated Press Photos)

UPSIDE-DOWN MOTHER AND BABE



A look at this picture makes the meaning of the word "slothful" just that much more vivid. Gwendolyn, three-toed sloth, with her baby Nancy, is shown resting in her favorite inverted position at the exposition at San Diego. (Associated Press Photo)

COAST GUARDSMEN RUSH TO THE RESCUE



Here is a dramatic scene as a coast guard detachment went to the rescue of refugees who were forced to wait for many hours at Kingston, Pa., while one of the East's countless flood points suffered a heavy toll. The refugees are shown being carried through high waters. Note the man holding his pet dog while being carried to safety. (Associated Press Photo)

Naval Chieftain



Admiral Osami Nagano (above) was named head of the navy department in the new Japanese government formed by Premier Kiki Hirota to liquidate the crisis caused by the assassination of high officials by insurgent troops. (Associated Press Photo)

GENERAL AGAIN POLICE CHIEF



Brig. Gen. Pelham D. Glassford, former chief of police at Washington, D. C., pictured with his pet colt, has forsaken his 60-acre ranch near Phoenix, Ariz., to become that city's police chief. (Associated Press Photo)

BROKEN DAM LOOSES TORRENT INTO TOWN



Flood waters in New England caused many dams to burst. This is the Greenwood dam on the Farmington river just after it gave way to empty 8,000,000 gallons of water into New Hartford, Conn. (Associated Press Photo)

HAILE VISITS RED CROSS HOSPITAL



Emperor Haile Selassie and his empress sat down in soft-cushioned luxury to have a talk with Red Cross workers on a visit to the hospital unit established in Addis Ababa. (Associated Press Photo)

Killed In Mid-Air



Lieut. William G. Beard (above) of San Francisco was one of six army fliers killed in the mid-air collision of two bombing planes at Honolulu. He was commander of one of the ships. (Associated Press Photo)

SETS GLIDER LOOP RECORD



Don Stevens, glider pilot, is shown climbing from his ship after setting a new world's record for loops in motorless aircraft at San Diego. Towed to a height of 18,000 feet, Stevens made 54 consecutive loops in his glider before landing. (Associated Press Photo)

DIKE RAISED TO PROTECT CAPITAL MONUMENTS



As the flood waters of the Potomac river rushed on to Washington, D. C., relief workers were ordered to rush the completion of a sand bag dike to protect the foundations of the Washington Monument and the Lincoln Memorial from the overflow. The Washington Monument may be seen in the right background. (Associated Press Photo)

Suspect Nabbed



Edward W. Bentz (above), who was mentioned in connection with the George Weyerhaeuser kidnaping at Tacoma, Wash., last year and is wanted for a Washington bank robbery, was arrested at Brooklyn, N. Y. He faced charges of robbery in Nebraska, Vermont and North Carolina. (Associated Press Photo)

Oregon Flag Gets New Lease on Life



Nearly forgotten and existing only on paper up to a few days ago, the navy blue Oregon flag bearing a gold escutcheon and gold letters on one side and a gold beaver on the other, has been resurrected by the Oregon State Motor association. The last original flag burned in the statehouse fire. In this photograph E. B. McDaniel, president of the motor club, and Louise Muller of the motor club staff, display one of the banners made recently under McDaniel's direction. Inset shows the gold beaver appearing on the reverse side. Every school, city, county, chamber of commerce and service club should own and display one of the flags, says the motorist leader.