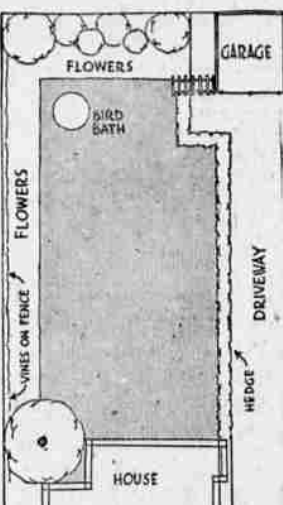


# Planting Suggestions for GARDEN LOVERS

All the family can join in the delight of growing a garden... and certainly all the family will profit by its completion, and revel in its beauty.



## Formal Design Good for Small Home Plantings



ture in a location where there are no many buildings, barriers, and artificial objects intruding upon the background.

For this reason, formal layouts should always be considered for small home grounds; and in most cases they are likely to be most satisfactory.

The design is concerned with the paths, beds and borders; and with the accents and focal points. It should be related to the house design.

A point which must always be considered is aspect; that is, the relation of each part of the garden to the sunshine which falls upon it.

A Good Example of Simple Formal Treatment on a Small Lot

Perhaps most gardening beginners, asked whether they prefer a formal or a naturalistic planting, will favor the natural. To them the charm of gardening is associated with enjoyment of the country and natural landscape beauty.

Even in a small city or suburban home grounds, they may be inclined to attempt a naturalistic planting, hoping to reproduce in a limited area, shut in by houses, streets and fences, a picture of untrammeled nature.

It is a principle of design that a garden must harmonize with its surroundings; and it is obviously difficult to create a naturalistic pic-

grown in the sunshine they will grow rapidly and develop plants in a very short time.

Outstanding varieties include pink triumph, California giants, Elks pride, ruffled giants, new dwarf giants and others. Bicolor petunias are tall trailing sorts which may be trained on a trellis to provide a very beautiful display.



Getting Rid of Weeds in Your Lawn. I know lots of folks have given up hope of ever having a weedless lawn.

In trying to get rid of weeds, the first thing to consider is this. A weed and a grass plant just naturally can't grow on the same identical spot.

But in discarding symmetry, do not fail to create a balance in the garden picture. The rules for garden design are the same as for other forms of pictorial composition.

All through the growing season your grass roots are constantly drawing eleven different food elements from the soil.

"Very good," you say, "it sounds like a great idea. But how about the weed roots that are already in my soil, just waiting to spring up and spoil my lawn?"

Now, of course, I wouldn't want to promise that early feeding will make the grass choke out all the weeds in one season.

But remember—to be effective, it must be done just as soon as frost is out of the ground.

Too, that just any old plant food won't do. Manure, for instance, actually contains weed seeds, and putting them on your lawn just

renewed food elements.

They make showy beds, and the dwarf types, including golden globe, are good edgings. The tall ones are really spreading in habit.

They make showy beds, and the dwarf types, including golden globe, are good edgings.

They make showy beds, and the dwarf types, including golden globe, are good edgings.

They make showy beds, and the dwarf types, including golden globe, are good edgings.

They make showy beds, and the dwarf types, including golden globe, are good edgings.

They make showy beds, and the dwarf types, including golden globe, are good edgings.

They make showy beds, and the dwarf types, including golden globe, are good edgings.

They make showy beds, and the dwarf types, including golden globe, are good edgings.

They make showy beds, and the dwarf types, including golden globe, are good edgings.

They make showy beds, and the dwarf types, including golden globe, are good edgings.

They make showy beds, and the dwarf types, including golden globe, are good edgings.

They make showy beds, and the dwarf types, including golden globe, are good edgings.

They make showy beds, and the dwarf types, including golden globe, are good edgings.

They make showy beds, and the dwarf types, including golden globe, are good edgings.

They make showy beds, and the dwarf types, including golden globe, are good edgings.

They make showy beds, and the dwarf types, including golden globe, are good edgings.

### Hints To Gardeners

by Gordon Morrison Breeding Expert Ferry Seed Institute



#### Prepare Soil Early

IN gardening as in Christmas shopping an early start is important. Size up your garden plot now to determine what can be done to improve the soil.

Spade or plow early. If a handful of soil gripped firmly can be crumbled readily upon release, the soil is in condition to be plowed or spaded.

Any soil is enriched by manure. Clay soils are improved in texture and sandy soils are improved in water holding capacity by spreading under manure, rotted leaves or lawn clippings or rotted garden refuse.

Complete commercial fertilizers are everywhere available. Ask for a "4-12-6" or similar mixture. Broadcast and rake in about four pounds of this per square rod just before planting.

It is important that fertilizer be used cautiously, for an excess is often harmful, particularly when dealing with production of fruits, that is, tomato, cucumber, pepper, etc.

Garden preparation effort is wasted if you do not plant seeds from dependable sources. Select your favorite varieties at the nearby store before the supply is depleted.

To gardeners who also like to maintain an excellent lawn—earliness of renewal again is important. Take advantage of a comparatively warm, early spring day when the surface is almost bare and the air is calm.

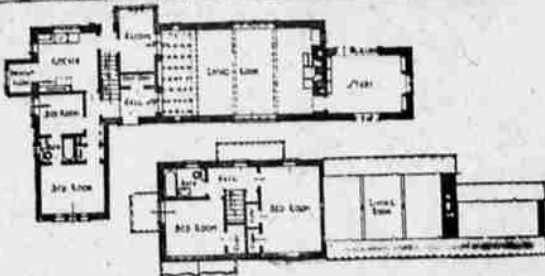
If you have a vacant lot next door, or other space nearby, grow a vegetable garden. A plot 30x50 feet will provide most medium sized families with all the fresh vegetables they can eat, with plenty left over for canning.

Let the children plan and tend their own gardens. It will keep them off the streets at a constructive mind and body building occupation.

makes the problem that much worse. Recommend that you buy a complete plant food, one that supplies all eleven of the food elements your grass needs from the soil.

Apply it to your entire lawn, 4 pounds per 100 square feet.

## Quiet Grace, Hemmed by Trees



This tree-hemmed house, full of quiet grace, is of white stucco on frame, with blue steel windows and black slate roof.

Although only a story and a half high, none of the second story space is lost, due to the building in of bureau and wardrobes where the bedroom was low.

The living room is sheathed in pine of random widths. Bookshelves have been carried across both ends of the room and also flank the fireplace.

In the owner's bedroom, closet doors which flank the fireplace are flush and without trim. A broad window sill in the dormer window forms a dressing table.

Waldron Faulkner is the architect and owner of this house, which is one of a series of distinguished small homes appearing in "Architecture."

Identity Unsolved BEND, Ore., March 21.—(AP)—Sergeant Arthur Tuck of the state police announced that the elderly man who was killed during a five-day encounter between a punitive expedition and a gang of brigands, it was reported today.

BAGDAD, Iraq, March 21.—(AP)—Khalil Khoshrowi, bandit chieftain known as Iraq's Public Enemy No. 1, was killed during a five-day encounter between a punitive expedition and a gang of brigands, it was reported today.

## Noses on Grindstones.

There is nothing that will keep your nose on the grindstone like a straight mortgage on your home. You can pay interest, commissions and fees for a lifetime and never own your home.

Your wise neighbors are refinancing straight mortgages with DIRECT-REDUCTION HOME LOANS

Repayable monthly, like rent.

Come in soon and get complete details.



### YOU CAN KNOCK OUT JACK FROST

save your fruit crop from freezing by installing heaters in your orchard

THE IDEAL FUEL IS

## DIAMOND BRIQUETS

Best for Furnace-Heater-Kitchen Range-Fireplace Grate and Orchard Heaters

FOR SALE BY

### F. E. SAMSON CO.

DIAMOND BRIQUETTES SMUDGING OIL

229 North Riverside Phone 833.

## Nasturtium Golden Globe Is Fine Dwarf Yellow

Lovers of fragrant garden flowers will be pleased with nasturtium, golden globe, a new addition to the gleam family and the first named color variety of the gem type of nasturtium.



Nasturtium Golden Globe

This delicately scented subject is uniformly dwarf and compact, and suggests many uses in the garden. Its deep golden yellow has a warm and mellow appearance which should make it welcome alone or in company with other colors.

Nasturtiums are the ideal flower for the gardener with poor soil. They will grow almost anywhere, with small amount of attention.

They make showy beds, and the dwarf types, including golden globe, are good edgings.

They make showy beds, and the dwarf types, including golden globe, are good edgings.

They make showy beds, and the dwarf types, including golden globe, are good edgings.

They make showy beds, and the dwarf types, including golden globe, are good edgings.

They make showy beds, and the dwarf types, including golden globe, are good edgings.

They make showy beds, and the dwarf types, including golden globe, are good edgings.

They make showy beds, and the dwarf types, including golden globe, are good edgings.

They make showy beds, and the dwarf types, including golden globe, are good edgings.

They make showy beds, and the dwarf types, including golden globe, are good edgings.

They make showy beds, and the dwarf types, including golden globe, are good edgings.

They make showy beds, and the dwarf types, including golden globe, are good edgings.

They make showy beds, and the dwarf types, including golden globe, are good edgings.

They make showy beds, and the dwarf types, including golden globe, are good edgings.

They make showy beds, and the dwarf types, including golden globe, are good edgings.

They make showy beds, and the dwarf types, including golden globe, are good edgings.

They make showy beds, and the dwarf types, including golden globe, are good edgings.

They make showy beds, and the dwarf types, including golden globe, are good edgings.

leaves at the expense of bloom on richer soils.

One of the charming features of the nasturtium is the mingling of flowers and leaves. This effect can be imitated very easily in arrangements for the house if you will cut both and closely follow the original stand.

They make showy beds, and the dwarf types, including golden globe, are good edgings.

They make showy beds, and the dwarf types, including golden globe, are good edgings.

They make showy beds, and the dwarf types, including golden globe, are good edgings.

They make showy beds, and the dwarf types, including golden globe, are good edgings.

They make showy beds, and the dwarf types, including golden globe, are good edgings.

They make showy beds, and the dwarf types, including golden globe, are good edgings.

They make showy beds, and the dwarf types, including golden globe, are good edgings.

They make showy beds, and the dwarf types, including golden globe, are good edgings.

They make showy beds, and the dwarf types, including golden globe, are good edgings.

They make showy beds, and the dwarf types, including golden globe, are good edgings.

They make showy beds, and the dwarf types, including golden globe, are good edgings.

They make showy beds, and the dwarf types, including golden globe, are good edgings.

They make showy beds, and the dwarf types, including golden globe, are good edgings.

They make showy beds, and the dwarf types, including golden globe, are good edgings.

They make showy beds, and the dwarf types, including golden globe, are good edgings.

They make showy beds, and the dwarf types, including golden globe, are good edgings.

They make showy beds, and the dwarf types, including golden globe, are good edgings.

## DENTISTRY

DENTAL PAIN MINIMIZED

### SAVE on DENTISTRY

by the Frequent Examination and Repair of Your Teeth

Prices quoted gladly and in advance of any work done

### Fillings, Plates, Bridges EXTRACTIONS

## Dr. Earnum

DENTIST

SPARTA BLDG. Opposite Hubbard Bros. Main and Riverside PHONE 233-B

### Make your Garden a moving Picture

With your shrubs forming the background, you can make your garden a moving picture with flowers. With Ferry's seed you can rotate your planting to have flowers coming into bloom continuously.

Tender, fresh vegetables, too, with just enough manuring each week fit your family needs.

The seasonal planning charts in the new 1936 Ferry-Morse Catalog (free on request) tell you what to plant and when.

Choose fresh PUREBRED SEEDS at your nearby Dealers

### FERRY-MORSE SEED CO.

SAN FRANCISCO

SEND FOR FREE GARDEN HELPS

Flower Gardens, Old Fashioned and New. Citruses Have a Beautiful! Getting the Most from Your Vegetable Garden.

FOR 80 YEARS IMPROVING SEED

Largest Seed Growers in Pacific Northwest.



# Real Estate Values Are ADVANCING

Influx of settlers from other states is being reflected in greatly increased demand and sharply rising prices in the real estate field. This applies to city, suburban and farm property. Particularly in the city, where there is an actual shortage of desirable homes, prices are rising.

## BUY YOUR HOME NOW! BUY PROPERTY and BUILD!

Persons wanting to own their own homes and shrewd investors are, therefore, buying now—riding a rising market on their investments. This is the time to buy property and build, through convenient Federal Housing loans, or buy homes at real value-giving prices. See the listing of desirable homes and other real estate listed today and every day in—

## MAIL TRIBUNE Classified Ads