

# Planting Suggestions for GARDEN LOVERS



All the family can join in the delight of growing a garden... and certainly all the family will profit by its completion, and revel in its beauty.



Look Over Seed Lists And Plan Garden Early.

## Garden Dreams by the Fireside

If you see someone these days with a look of elation on his face (or hers) odds are that he is a garden fan.

Those who think of garden fans as queer persons, curiously interested in seeds, rakes, sprays and fertilizers and strangely willing to waste afternoons of fine weather digging in the ground, have a distorted view of the matter.

There is a sporting side of gardening. Both physical and mental exercise are abundantly provided by the work of planting and cultivating and by the study of cultural methods through which one may grow earlier and larger crops than his neighbor.

Garden design is one of the fine arts in which amateurs who have a talent for it may find opportunity for satisfying self-expression. They may create pictures which live and in which they may live.

But in addition to these rewards there is an emotional side to gardening. It affords its devotees a plenitude of thrills, kicks, whatever you may term those pleasurable reactions in which excitement of the senses is combined with an uplift of the spirit.

Do you happen to know a dahlias fan? Engage him in conversation about his favorite flower; if it is not hard to do, then observe the rapt expression which comes into his eyes as he describes the beauties of golden Lord of Autumn or scarlet Estan.

His words may not express the enchantments that possess him at the mere thought of their study, but his eyes will. It may seem strange to you that flowers which perhaps you remember as just dahlias should be treasured in the memory as individuals. You are like a man from Mars to whom all earth-people look alike.

Observe more closely the flowers this summer. Expose yourself to the infection. Learn the names of the different varieties, their color and character. If the power is in you to admire beauty for its own sake you will not be long in acquiring an appreciation which will give each garden month a new meaning for the rest of your life.

To experience a thrill from the beauty of flowers it is not essential that you grow them. But if you grow them, then the pleasure of their beauty is multiplied. A plant from the florist's in the winter living room will lift your spirit with an echo of the summer garden's ecstasy, but in the flowers which you grow you discover beauties which you never knew existed. And the garden which you have helped create is not merely a thing you admire, but something you possess, which becomes part of your life, oftentimes the pleasantest part.

So do not wonder at the enthusiasm of gardeners and if you wish hard to do, then observe the rapt expression which comes into his eyes as he describes the beauties of golden Lord of Autumn or scarlet Estan.

## Home Grown Mellons

PLANT SEED ON LEVEL, SEVERAL INCHES APART

AS PLANTS GROW DRAW SOIL TO THEM

SO THEY WILL BE SLIGHTLY HILLED WHEN THEY BEGIN TO VINE

DOES A MELON VINE GROW DURING THE NIGHT OR DAY? SET A SMALL STAKE AT THE END OF VINE AND SEE.

Try a Few Hills of Melons This Year.

Melons ripening on the vine are a delicious. Only those who grow them in their own gardens are privileged to enjoy the real flavor of a melon that is permitted to grow to full maturity.

With a few hills of melons in your garden, the children may more easily be interested in garden work. Does a melon vine grow during the day or during the night? Test this by setting a small stake at the end of the vine in the evening or in the early morning. This is a most interesting experiment which should fascinate both the grown-ups as well as the children.

Plant on the level. Place five or six seeds in a hill. The seeds should be spaced several inches apart. As the plants grow draw a little soil to them so that they will be slightly hilled when they begin to vine. Water is best applied by irrigation. Dust the plants occasionally with dusting sulphur to prevent mildew.

There are many varieties of melons and most of them will have a good flavor under proper cultural conditions and if they are permitted to remain on the vine until they are thoroughly ripe.

Try a few hills of melons in your home garden this year.

## Leonard Unloads Carload Of 1936 Frigidaires Here

Acceptance of the new 1936 Frigidaire household electric refrigerators has been so great that Leonard Electric company dealers here have increased their orders to the factory to such an extent shipments now are being made to him by the carload.

The first car-load arrived in Medford Wednesday and other shipments are scheduled to follow closely in order that all purchasers may receive their new Frigidaires promptly.

"Since we held our first public showing of the new models," Mr. Leonard said, "we have taken orders faster than in any similar period in our history. Thousands of other dealers throughout the country are enjoying the same excellent response."

Fortunately, the frigidaire division of General Motors corporation, for which we are the outlet here, anticipated this demand and started building up warehouses for the sales demand now. This confidence in their product also was reflected in stabilized employment for both their own manufacturing forces and those of the companies which supply Frigidaires with the many raw materials which go to make up a Frigidaire.

"The car-load of household refrigerators we received yesterday will replace floor models we have delivered within the last few days and our showroom again have a complete line from which prospects may make their selections."

Are you a member of ETHELWYN B. HOFFMANN'S HOBBY CLUB? Join Now.

## LOCAL AND PERSONAL

Duke Is Town—Jesse B. Duke of Sardinia Creek was a business visitor in Medford yesterday.

Back From Roseburg—Lieut. Theodore P. Coates, sales officer of the Medford CCC district, has returned from a business trip to Roseburg.

Resigns From CCC—Glenn A. Metzler, educational adviser at Camp McKinley, has resigned from the Civilian Conservation Corps to return to Corvallis, his home city.

Medford Shoppers—Mr. and Mrs. Leland Charley and small daughter of Brownboro were among the out of town shoppers in Medford yesterday.

More Planes Due—Six more army pursuit planes from the Boeing plant in Seattle are due to arrive here shortly. Like the 19 others that have cleared through Medford municipal airport lately, they are intended for use at Selfridge field near Detroit, Mich.

Insurance Man Arrives—Marshall Reeves, accompanied by Mr. Reeves, arrived in Medford Friday to take up his new duties with the Mutual Benefit Health and Accident company in this district of the state. They will make their home at Arthur Arms.

Back at Bowman's—Miss Mar. Hammarly, who was formerly associated with Bowman's beauty shop in this city, has returned here from Eugene after an absence of several months to resume her activities at Bowman's.

Confer With Janouch—Clyde Smith, foreman of the ERA camp at Dead Indian Soda Springs, and John A. Walsh, project superintendent at the Applegate CCC camp, conferred yesterday in federal building with Karl L. Janouch, supervisor of the Rogue river national forest.

Visits Here—Robert Kincaid arrived in Medford Thursday from Portland to spend several days as the guest of his mother, Mrs. Alice Kincaid, and sister, Mrs. Lottie Howard. Mr. Kincaid will continue south to Los Angeles to visit another sister, Mrs. H. D. Flaherty.

To Speak In G. P.—A. H. Banwell, manager of the Jackson County Chamber of Commerce, has accepted an invitation to address the Business and Professional Women's club of Grants Pass at a dinner-meeting Thursday, March 19. He was asked to speak in talk on "Women's Place in the Civic World" that he gave some time ago before the Business and Professional Women's club of Medford.

Payday For CCC—Yesterday was payday for the men of the CCC. About \$30,000 was distributed to the enrollees of the Medford district camps and another \$100,000 was sent to their homes as part of their compensation. Camp officers, under armed guard, came to Medford yesterday to get the cash at local banks.

Realty Firm Moves—Offices of the Southern Oregon Realty company, owned and operated by Mrs. S. J. Merrick, have been moved to a more convenient location in Merrick's Auto camp. This well-known local real estate firm was established ten years ago and until recently its headquarters were at 44 North Riverside avenue.

Kiwanis Speaker—A. H. Banwell, manager of the Jackson County Chamber of Commerce, will be the principal speaker at tomorrow's luncheon-meeting of the Kiwanis club in the Hotel Medford. He will talk on "Communism," a subject he has studied thoroughly for many months. Notice of the meeting said Mr. Banwell would present facts that will cause every Kiwanian "to sit up and take notice."

To Address Meeting—George Henselman, district agent of the Aetna Life Insurance company, accompanied by Mrs. Henselman and Mr. and Mrs. Roland Hubbard motored yesterday to Portland where Mr. Henselman will attend the fourth annual sales congress of the Life Underwriters Association of Portland tomorrow. He will address the large group of life insurance agents and salesmen, giving a talk on "Economic Security for the Family." Mr. Henselman's party will return to Medford the latter part of the week.

Whitehead U. S.—Capt. Edward Whitehead, U. S. bureau of air commerce, returned to Portland on a United plane Friday afternoon after spending the day in consultation with Fred Heath, Jr., chairman of the city council aviation committee, and Fred W. Scheffel, city superintendent. They discussed technical matters pertaining to municipal airport improvement plans. Medford's supplemental application for additional WPA airport funds will probably receive final approval within the next ten days, Capt. Whitehead said.

Mrs. Saltzman Ill.—Mrs. Lillian Saltzman has been ill of influenza at her home, 320 North Holly street, but friends report that she is slowly recovering.

Guests From Talent—Mrs. J. R. Withrow, Mrs. E. J. Jacobs and Mrs. Olen Withrow of Talent were guests in Medford Friday at the home of Mrs. N. S. Ostman.

From Applegate—Lieut. Henry E. McManus and Lieut. Henry H. Marsden of Camp Applegate conferred with officers at Medford CCC headquarters yesterday.

Expected Back—The Rev. R. S. Peterson is expected to return home about the middle of the week from St. Joe, Missouri, where he was called to accompany Mrs. Peterson's father from a hospital to his home in Boise, Idaho.

Sunday School Dinner—The Rev. Joseph Knotts' Sunday school class will have a covered dish dinner, a business meeting and a program Tuesday evening at 8:30 in the church parlors. All members are urged to be present and to bring a hot dish.

At Headquarters—Lieut. Antonio E. Brabec and Lieut. Carroll A. Rising of Camp Winner were business callers at CCC headquarters here yesterday.

From Tillamook—Miss Ruby Fairbanks arrived here Thursday from Tillamook, expecting to remain in Medford. She is a guest this weekend of her sister, Mrs. Blanch Robinson of Talent.

Hinmans Visiting—Mr. and Mrs. Lorin Hinman of Portland are guests of Mr. Hinman's parents, Mr. and Mrs. Lee Hinman of West Tenth street for the week-end. Lorin Hinman, well-known in this city, is an executive of the Portland Electric company.

Beautifully Vacant Lot—Sunshine, golden, glittering—and all of the colors of the rainbow which cloak nature's hillsides and fields after the warm spring rains, may be brought to the city with very little effort. Unusually vacant properties may quickly be transformed into places of beauty by broadcasting seed of native wild flowers while there is still ahead the promise of enough late spring and early summer showers to induce germination.

WINDOW GLASS—We sell window glass and will replace your broken windows reasonably. Trowbridge Cabinet Works.

Use Mail Tribune want ads.

## LARGE CROWD DUE CRATER PK. TODAY

Crater Lake National park officials anticipated a large attendance at the mountain resort today. Weather at the lake yesterday was described as ideal, with the 151 inches of snow in good condition for skiing. All highways to and in the park were reported open, excepting the strip from headquarters to the lake rim. Scenic charm of the park was said to be at its winter's best. Many members of the Rogue Snowmen, the Snow Club of Klamath Falls, the Crater Lake Ski Club of Port Klamath and the Sky Liners of Bend were expected to spend the day in practicing ski jumps and runs in the park preparatory to a competitive tournament this month.

## MOTT TO BROADCAST ON MONDAY EVENING

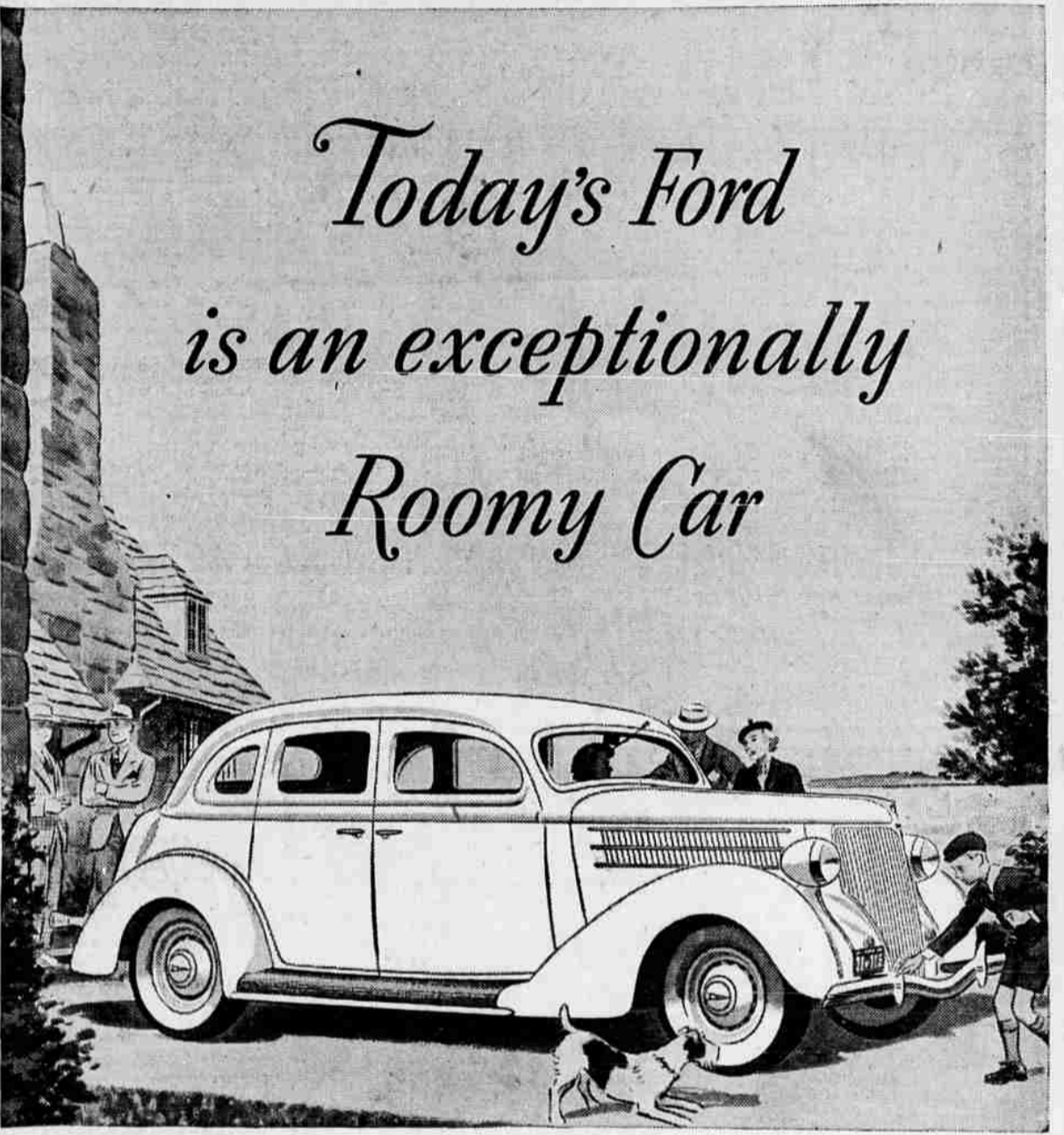
WASHINGTON, Feb. 26.—(Spl.)—Congressman Mott of Oregon will broadcast an address from 7:45 to 8 p. m. (P.S.T.) Monday over the Columbia chain and Portland station KOIN. Subject of the address will be "The Brain Trust Goes to Trial."

## V. F. W. MEET CHANGED TO TUESDAY EVENING

Crater Lake post and auxiliary of the Veterans of Foreign Wars have changed their meeting night from March 2 to March 3 in order to join with posts of the organization in enjoying the fifth annual "Hello America" broadcast over NBC from 8:30 to 9:30 p. m. National Commander James E. Van Zandt will obligate a nation-wide class of recruits gathered at the various posts throughout the country. Membership Chairman E. W. Wall of Crater Lake post, will have a class of recruits to be obligated at the time. Following the program the post and auxiliary will hold their respective meetings which will be followed by a chili feed prepared by Comrade Joe Wood, a past master in the art of preparing chili.

Factory style workmanship thoroughly guaranteed. Your watch or jewelry repairing receives my personal attention. Jno. W. Johnson.

\$1.00 SPECIAL \$1.00 Hats, Gloves, pajamas Raincoats, Sweaters, Purse. ETHELWYN B. HOFFMANN



# Today's Ford is an exceptionally Roomy Car

THERE's a double advantage in having a V-8 engine in your car. It helps to give you fine-car roominess, as well as fine-car performance. The Ford V-8 engine takes up less space under the hood because of its compact design. And it is positioned forward in the chassis, in accordance with the most modern construction. More of the car's length can thus be used for passengers—extra inches of leg room are provided in both the front and rear compartments.

Wide seats are another reason for the big-car roominess of the Ford. All seats in all body types (except the individual bucket-type front seats of the Tudor Sedans) hold three persons in comfort. The 1936 Fordor Sedans have 3½ inches more elbow room in the rear seat because the rear-quarter trim is recessed above the arm rests. We'd like to have you ride in the Ford V-8 for 1936. Actual measurements will confirm your own impression of big-car roominess and comfort.

**Ford**

**THE FORD POLICY**

"The car we make does not have to be cast aside every year. At any period a customer buys, he gets the best we have. . . . Our main purpose is to make a car that will become more and more useful, and more and more easy to obtain, to more and more people."

**FORD MOTOR COMPANY**

New Low Monthly Terms—ANY NEW FORD V-8 CAR CAN NOW BE PURCHASED FOR \$25 A MONTH, WITH USUAL LOW DOWN-PAYMENT. SEE THE FORD DEALER FOR DETAILS OF LOW MONTHLY TERMS AND NEW ½ PER MONTH FINANCE PLANS OF THE UNIVERSAL CREDIT COMPANY

## See the New 1936 FORD Now On Display

# C. E. GATES AUTO CO.

Sixth and Riverside      YOUR FORD DEALER      Phone 141

## A Scarcity of Double Stocks

Amateur gardeners are wont to inquire for a solution to the problem of producing higher percentages of double stocks. It is an interesting fact that the double stocks are sterile, and therefore do not produce seed for the reproduction of the species. The sturdy, unwanted, single stocks are the seed parents. The percentage of doubleness produced from seed of single plants is only a tendency which has definite limitations, for if anyone were so fortunate as to produce a strain of stock seed which would prove to be 100 per cent double, their joy would be short-lived in the knowledge that no seed would be available with which

to carry on. It is said that the most vigorous seedling plants are usually the singles, and that by eliminating these from the seed box, the percentage of doubles will be greater. Others claim they can identify the doubles by the different form of leaf from that of the single.

However, those who are not so certain of being able to separate the singles from the doubles in the seedling stage resort to the expedient of planting stocks rather close together in the garden bed, thus, when the singles make their appearance, they may be discarded without affecting the mass.

## Burelson Launches Customer Campaign With Spring Sale

Crowds of shoppers from all parts of southern Oregon visited Burelson's store Friday and yesterday attracted by the outstanding bargains in new spring merchandise reduced in price for a special sales campaign for one thousand new customers.

Stock at Burelson's is particularly complete this spring in readiness for the new season, according to E. T. Burelson. Apparel in both the downstairs store and on the main floor is included in this large selling event which will be continued during the week. Dresses, suits, coats and other articles have been substantially marked down for the new customer drive.

## GOOD GARDENING



Spade Work. Don't let your zeal for turning the good earth lead you to putting a spade into the garden too early, or before the last of the winter rains have dried out well. It's hard to say just how much moisture is right, but here's a good test. Squeeze a handful of soil and drop it. If the soil remains stuck together it's too wet to work. Don't spare your back in spading, and rake right along behind the spading, breaking up the lumps and clods while they're still moist. In all cases moisture or the best available substitute—should be turned under. The whole garden should be hoed over to a depth of four to five inches to prepare it for planting after it has been spaded as deep as the good soil goes.

Tomorrow—Use of Ashes.

## Jackson County Feed Company

North Bartlett      Phone 803

### Your Best Bet For Fresh, High Germinating SEEDS

Big Selection of Flowers and Vegetables

#### LILLY'S LAWN MORCROP

Made especially for use on lawns to keep them a rich green color and in vigorous growth during the entire growing period. Keeps the grass green and thickens the stand of grass, discourages weeds and reduces the amount of water required to maintain growth. Lawn Morcrop builds up the soil, stimulates the activity of beneficial soil bacteria and produces a deep resilient growth.

Packed in 50 lb. bags \$1.25