

AUTOMOTIVE NEWS

'JOKER' HITS BILL FOR PURCHASE OF 565 ARMY 'SHIPS'

(Copyright, 1936, by United Press)
 WASHINGTON, Feb. 15.—(UP)—A "joker" was discovered in the \$545,228,318 war department supply bill tonight, which army experts said might jeopardize the program for purchase of 565 additional airplanes.

A little five-line amendment limiting profits on all contracts for ordnance and aircraft to 10 per cent was inserted without objection a few minutes before the house passed the bill late yesterday.

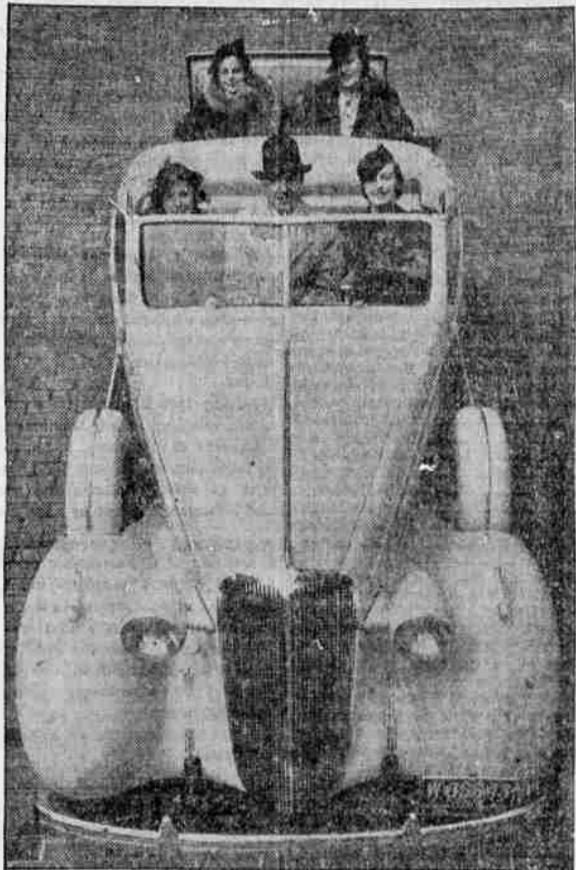
The full significance of the amendment was not realized until tonight, Chairman John J. McSwain of the house military affairs committee and members of the appropriations committee, said it would have to be "sharply revised" by the senate if airplane purchases are to be made on schedule.

The amendment was offered by Representative W. D. MacFarlane, Democrat, Texas, who briefly informed the house a similar provision was carried in last year's navy supply bill. This was erroneous, it was later found. The profit-limitation amendment was in the Vinson \$1,600,000,000 treaty navy authorization bill.

Seek Uniform Labor Laws
 SALEM, Feb. 15.—(AP)—Uniform labor legislation in the Northwest states will be the objective of a regional conference to be held in Portland this summer, Charles H. Gram, state labor commissioner, announced today.

Mine Sales Made Easier
 WASHINGTON, Feb. 15.—(AP)—James M. Landis, chairman of the securities commission, conferred with a house mining bloc today on western proposals for "simplification" of the commission's rules governing sale of mining securities.

Bird's Eye View Accentuates Graceful Lines of New Buick



THIS BIRD'S EYE VIEW of the new Buick Series 40 Special Convertible Coupe accentuates the long graceful lines of the hood and the fender and spare wheel assembly, at the same time illustrating passenger room in the attractive sports model.

F. D. R. INVITES ALL AMERICAN LANDS TO PEACE PARLEY

WASHINGTON, Feb. 15.—President Roosevelt tonight uncovered a proposal for an extraordinary inter-American conference, encompassing the 20 central and south American governments and aimed "at permanent peace on this western continent."

In almost identical personal letters to the presidents of the various republics, the chief executive suggested that the parley be held at Buenos Aires, Argentina, at an early date. The cause of peace in the new world, he said, is a matter of "vital concern."

"These steps, furthermore," he said, "would advance the cause of world peace, inasmuch as the agreements which might be reached would supplement and reinforce the efforts of the league of nations and of all other existing or future peace agencies in seeking to prevent war."

A favorable response to Mr. Roosevelt's suggestion was generally conceded. In fact, the staging of such a peace parley was virtually guaranteed in advance through informal soundings by the state department.

STEEL AND RAILS PERK UP MARKET

NEW YORK, Feb. 15.—(AP)—A hesitant stock market today was thrust into life by a last minute expansion in steels, rails and several of the non-ferrous metals.

Higher prices, some of them the best in several years, snapped the volume for the short session to 1,373,795, a bit more than the previous Saturday and substantially better than the hourly rate for Friday.

The Associated Press average of 60 stocks advanced 3 of a point to 62.0, a new high for the year, and industrials with a like rise and utilities with a boost of .1 of a point also went into virgin territory for the year. Rails, up 4 of a point, equalled the 1936 peak.

PORTLAND PROMISED PREACHING MISSION

PORTLAND, Feb. 14.—(P)—A definite promise that Portland will be one of the 25 American cities to get the national preaching mission next fall was made here by Dr. Samuel McCrea Cavert of New York, general secretary of the federal council of churches of Christ in America.

The Oregon committee of 100 had voted unanimously to invite the mission to Portland and to accept the suggested dates, November 5 to 8.

The mission will bring to Oregon about 15 of the leading religious figures of the world today.

Auxiliary Hostess To Large Number At Friday Affair

The American Legion auxiliary entertained with a card party Friday afternoon and evening in the Baldwin Piano Shoppe, with Mrs. Goodwin Humphries, Mrs. Ken Dally and Mrs. George Codding as hostesses. Ladies played during the afternoon and both ladies and gentlemen were guests of the auxiliary in the evening.

Seventeen tables were in play. Prizes were donated by Adrienne's, Jacques Lenox, Burelson's and the West Side Pharmacy. Mrs. Henry Pace had charge of refreshments for the occasion. Decorations carried out a Valentine motif.

Brill Metal Works, Inc.
 GENERAL SHEET METAL
 Furnaces — Oil Burners
 109 E. 8th St. Phone 418

Hotel San Pablo
 520 PABLO AVE. AT 20th STREET
 OAKLAND CALIF.
 Down Town Central
 A Home Away From Home
 Completely Renovated — and Redecorated
 Rates
 With detached bath, from \$1.25 daily
 With Bath, from \$1.25 daily
 FREE NEW MODERN GARAGE COFFEE SHOP
 DIRECTIONS TO HOTEL
 Stay on Main Highway (San Pablo Avenue) directly to 20th Street
 Management—Harry B. Strang

New Coast Plant of Studebaker Doubles Production Schedule Still Lags Behind Orders

Steady employment, increased pay rolls, large purchases of coast-built tires, batteries, springs, bumpers, etc.—this is the outstanding success story of Studebaker's new Pacific Coast factory which is putting thousands of additional dollars into circulation each week throughout the western states, thus contributing materially to the prosperity of this region, in the opinion of C. K. Whittaker, President of the Studebaker Pacific Corporation.

Automobile sales on the Pacific Coast will lead the per capita sales for the nation as a whole for the first quarter of 1936, Whittaker predicts, and to support his contention he refers to his factory's deliveries, which for the month of January were 21% greater than the number of cars on order January 1st, which number of cars had been planned to manufacture during that month. Despite this increased production on the part of the factory to meet dealer needs throughout the territory, the bank of unfilled orders continued to increase until on February 1st unfilled orders were 49% greater than at the beginning of the year.

"Within thirty days after we announced our new coast factory and broke ground for its erection the enthusiastic response of west coast motorists showed us that we had greatly underestimated this market and that in all likelihood we would be compelled to double our original production estimates," Whittaker stated. "Plans were accordingly formulated," he continued, "and we now face the happy situation of having current deliveries fall substantially behind this already-doubled production schedule."

"I feel sure that generally improved economic conditions here on the west coast are important factors in our present success, but I feel, too, that the beauty, smartly styled interiors, and all-round performance values of our present cars, as emphasized by the recent Gilmore Economy Run, are bringing Studebaker much favorable attention from discriminating motor car buyers."

Mud and Snow No Barrier to New Silvertown Tire

The new Super-Traction Silvertown passenger car tire designed by The B. F. Goodrich company, especially for service in mud and snow, is proving itself in service everywhere, according to J. A. Anstey, budget manager at the Lewis Super Service Station. The tire can be used on nearly 300 automobile models, including nearly every model for 1935 to 1936. Designated as the Super-Traction Silvertown, the new product is built for service under conditions where the conventional tire cannot pull through.

The new product is proving valuable to farmers, mail carriers and salesmen in the rural districts, and in all types of rural maintenance service.

The tire is constructed with the Life-Saver Golden Ply to resist heat and prevent high-speed blowouts. The tread is deep and open, with thick, sharp-edged cleats to provide sure-footed traction under the toughest road conditions. Wide spaces between cleats prevent clogging of mud and snow. Loose material is thrown clear of the tire, giving positive traction at all times.

Mr. Anstey says: "This new tire may be purchased on our original budget pay plan at 'no money down' and on easy terms to suit the customer."

Watch Studebaker!

24.27 MILES PER GALLON IN GILMORE ECONOMY RUN!

Stunning new low prices! Stand-out style car of all the new cars! Spectacular gas and oil economy! Surprising roominess! World's safest all-steel body! Only 1936 car with automatic hill holder! No wonder they're saying, "Watch Studebaker!"

Now \$28.50 A MONTH
 offer low down payment buys you a superb new 1936 Studebaker.



SANDERSON MOTOR CO.
 Studebaker Sales and Service
 207 So. Riverside. Phone 1385

NO MONEY DOWN

USE OUR ORIGINAL BUDGET PAY PLAN for the purchase of Goodrich Tires and Goodrich Batteries



NO MONEY DOWN ON AMERICAN-BOSCH and Western Air Patrol Home Radios with all the Newest features
 Metal tubes... all-wave superhet... airplane dial... Magnavox speaker!
 Come In or Phone 1300 and let us explain the easy term arrangement.

Motorola AUTO RADIOS
 Finest auto set on the market. All improvements.
 \$33.95
 NO MONEY DOWN!

Come In and See Our Stock of Used Car Radios and Used Home Radios
EASY TERMS TO SUIT YOU
LEWIS SUPER SERVICE STATION
 Complete Automotive Service — We Never Close — Wrecker Service
 8th and Front W. L. LEWIS, Mgr.

A TOE TOUCH



OIL-HUSHED to a sigh of silence under Buick's style-tapered bonnet, a great-powered valve-in-head engine waits to unleash a torrent of action at your command.

There's thrill in it—and triumph over time and distance. But most important—there's eyewink obedience.

Teamed up with this ablest of driving forces is the newest and most highly perfected system of hydraulic brakes.

The quickest of stops is velvet smooth under their self-energizing action. On the wettest of streets there will be no slewing, no swerves, for they are automatically self-equalizing.

Their action has the smoothness of a closing hand, increasing its grasp steadily to the maximum. Their steel-tendon grip would halt a heavy truck, but it takes only a touch of a daintly-shod toe to put them into action.

We call them "tiptoe hydraulics," and how apt the name is you'll never know until you drive a Buick and sample for yourself their softness and their velvet command.

The first few times you sit behind a Buick wheel, you may find yourself traveling faster than you think. No car is more buoyantly smooth in its power-flow, more deceptively effortless in its swift flight.

But no car is more surely under control at all times—quicker, smoother, easier in its stopping. If you must drive with an eye on the passing minutes, do so in a Buick which matches engine eagerness with tiptoe braking sureness, offsets highspot go-ability with dependable stop-ability.

to \$2500 are the Delivered prices of the new Buicks in Medford, subject to change without notice.

\$1049 Standard and special accessories groups on all models at extra cost. All Buick prices include safety glass throughout as standard equipment.

"Buick's the Buy"
SKINNER'S GARAGE
 143 SOUTH RIVERSIDE — PHONE 102
 ★ ★ ★ ★ WHEN BETTER AUTOMOBILES ARE BUILT, BUICK WILL BUILD THEM ★ ★ ★ ★