

# AUTOMOTIVE NEWS

## FORMAL SEDAN IS ADDED TO MODELS OF BUICK FOR '36

Addition of a new model to the Buick higher priced Series 90 Limited group of motor cars is announced by R. A. Skinner of Skinner's Garage, local Buick dealer.

Mr. Skinner says, "Long a leader in the upper medium price field, in which it has a large exclusive clientele, Buick has consistently maintained a wide selection of models for this group of buyers.

"The new model is a formal sedan, combining the qualities of the limousine and the standard six passenger sedan of the Series 90 Limited group. New bodies by Fisher are featured by a safety plate glass partition separating the driving and rear compartments. This can be raised or lowered by means of a handle installed in the back of the front seat. The car thus may be converted into a full limousine or used as a less formal sedan when not chauffeur driven.

"Dimensions of the new car provide two inches more leg room than the limousine type of body with three inches more space between the back of the front seat and the wheel. It is designed to accommodate six passengers when used as a sedan, space for three passengers being available in both front and rear compartments.

Instead of a header bar, as in the limousine bodies, the plate glass partition rises flush with the headlining. To conform to sedan specifications, upholstery is the same in both front and rear compartments. In Buick limousine bodies, front compartments are upholstered in leather.

The new model is built on a 138-inch wheelbase chassis and is powered by the Buick valve-in-head straight eight engine used in other Series 90 Limited cars. This develops 120 horsepower at 3,200 R. P. M., giving a top speed of 87 miles an hour and acceleration from 10 to 60 miles an hour in 31.4 seconds.

Streamlined in the manner of other Buick cars, the formal sedan likewise has a built-in trunk, a feature of all Buick 1936 sedan models. Safety glass in windshield and all windows is standard equipment. The car is delivered with six wheel equipment, spare wheels being carried in front fender wells.

## New Nash Cruising Gear Increasing Gasoline Mileage

The new Nash automatic cruising gear, which is proving a popular feature on all Nash and Ambassador "400" models, is increasing gasoline mileage from 15 per cent to 25 per cent, according to Walter W. Abbey, local Nash, LaFayette, Willys 77 and International truck dealer.

Mr. Abbey says: "Nash automatic cruising gear is the newest thrill in motoring! It's simple, it's entirely automatic, but what a difference it makes in performance and what a difference in the mileage.

"The cruising gear is like a 'fourth' gear. It comes into operation automatically at a speed of approximately 45 miles an hour. Then what happens? As you go faster and faster, the revolutions of the engine are reduced almost a third. You may be hitting 60 or 70 but your motor will only be jogging along. The part of the motor operates more slowly and with no noise and no straining.

"For example, when you are driving 60 miles an hour, engine revolutions are at the rate of only 42 miles an hour—normal car speed. At 80, your engine turns at the rate of 66. When the car speed is reduced to about 30 miles an hour, the cruising gear automatically shifts back to conventional high speed. This gives unusual power on hills and quick acceleration in city traffic. The cruising gear increases oil mileage as much as 50 per cent."

WASHINGTON, Feb. 8.—(AP)—F. E. Mollin, of Denver, secretary of the American Livestock association, said today the association's forestry committee would seek a 10-year extension of grazing in national forests at a meeting Monday with P. A. Silcox, chief of the forest service.

SPENCER CORSETTIERE Tel. 1429-T.

## Ford Builds 'High Wheeler' for Difficult Roads



A FORD V-8 "HIGH WHEELER" for use in rural districts where exceptional road clearance is needed is now being produced by the Ford Motor Company. The car is equipped with 18-inch steel spoke wheels and 6.00 by 18 4-ply tires, instead of the 16-inch drawn steel wheels and 6.00 by 16 tires which are standard on the 1936 model. The additional road clearance enables the "high wheeler" to negotiate roads with deep ruts and trails with high spots such as stones and stumps. The view at right shows the standard wheel in front, with the new "high wheel" behind.

## Many New Features in Oldsmobile's 1936 Models



Oldsmobile presents, in 1936, two new automobiles into which every proven feature has been engineered. These features include all those advantages which add to the comfort and safety of the passenger as well as the economy and performance of the motor. Important among the 1936 Oldsmobile features are livelier power, increased luxury and comfort, super-hydraulic brakes, center-control steering, solid steel "Turret Top" body by Fisher, knee-action wheels, smoother performance, increased all-around economy and safety glass as standard equipment in all models. The model pictured above is an Oldsmobile Six Four Door Touring Sedan.

## AUTO FATALITIES FOR COUNTY SHOW INCREASE IN 1935

Although Oregon as a whole reduced its traffic toll last year, Jackson county records show an increase in automobile fatalities from three in 1934 to six in 1935, according to a statement received here from W. R. McDonald, director of the Oregon State Motor association in charge of safety.

Despite this local increase, he said, Oregon maintains a prominent position in the national safety record, ranking second among states which have shown outstanding reductions in fatal accidents. Nationally, traffic deaths soared to a new all-time high. "Failure of Jackson county to better its record in 1935 is no reason for motorists here to feel that traffic accidents are unavoidable," the motor

club official declared. "We are only just beginning a new year and an opportunity is at hand to make a fine showing."

McDonald pointed out that counties in which intense safety work had been carried on generally reported decreases. Klamath county, for example, reduced its traffic toll from 22 in 1934 to 14 in 1935, he said.

Serious accidents can be eliminated if every motorist handles his machine intelligently and observes traffic regulations, which, fundamentally, are nothing but rules of safety. To drive safely one must always take his job behind the wheel as a matter of life and death.

"Perhaps one of the greatest reasons for serious automobile smashings in this county is the inclination to drive at high speeds over 'open' highways. Accidents occurring on roads that appear to be clear are more likely to prove fatal than those occurring in congested areas.

"If every motorist will observe a few fundamental rules of driving, I feel certain that the records at the end of the year will show a reduction. These, briefly, are: Always keep full control of your machine, slow down after dark, observe the law and be courteous to the other fellow."

## Two Dealers Attend Portland Meetings

W. W. Allen of the Pierce-Allen Motor Co. returned to Medford Saturday from Portland, where he attended a meeting of the Oregon State Automobile Dealers' association which was held in conjunction with a district meeting of the National Automobile Dealers' association. Mr. Allen says it was the largest and most enthusiastic gathering of dealers he has ever attended.

C. E. Gates of the C. E. Gates Auto Co. also attended the association meetings.

Mr. Allen remained in Portland Friday to be present at a Dodge dealers' meeting presided over by Dodge factory executives where plans for the spring merchandising of Dodge and Plymouth automobiles and Dodge trucks were discussed.

Gold Exports Grow. WASHINGTON, Feb. 8.—(AP)—The treasury granted licenses for the exportation of \$3,935,000 in gold today, bringing total shipment to \$20,678,000 since the outward flow was resumed last Monday.

## NOW YOU CAN OWN THIS BEAUTIFUL, BIG LAFAYETTE 1936 DELUXE SEDAN



FOR ONLY **\$28.00 A MONTH** WITH USUAL LOW DOWN-PAYMENT

**NEW C. I. T. 6% BUDGET PLAN**  
Under this new 6% Budget Plan, amazingly low monthly payments will put any Nash or LaFayette car in your garage. For example, you can own the big sedan shown above, for only \$28 a month!

In many cases the trade-in value of your present car will cover the usual, low down-payment required.

Terms on the new Nash "400"—a big, luxurious, super-safety car with an amazing, new kind of motor—are only a few dollars a month more! Any state tax is extra.

**\$595** Keosauha, Wisconsin and up. T. o. b. factory.

This low monthly payment includes insurance coverage, finance charges at 1/2 of 1% per month, federal tax, and all standard accessories.

For only \$28 a month you can now own and drive the 1936 LaFayette Sedan—the only car in the lowest-price field that's engineered, powered and lubricated like the highest-priced cars! This small monthly payment includes insurance coverage, finance charges of 1/2 of 1% per month, federal tax and all standard accessories such as spare tire, bumpers, etc. Any state tax is extra. Terms on the Nash "400"—only a few dollars a month more—can also be arranged. The Nash Motors Company.

123 S. Riverside WALTER W. ABBEY, Inc. Phone 303

## LIONS CLUB AUTO SHOW DRAWS GOOD CROWD AT ARMORY

A good share of the residents of the Rogue River valley are interested in latest creations of the automotive industry, judging from the large attendance at the Lions Club Auto Show which ended last night at the Medford armory. The entire affair was considered extremely successful by Carol Hays, chairman, and brother Lions.

In a setting of shiny new 1936 cars exhibited by local dealers, entertaining programs were presented Friday evening and yesterday. In addition to excellent performances by Medford musicians and dancers, Vanline's company of magicians featured unusual acts including a blindfold tour of the city by Miss Millissent Cazan, known as the "Lady Houdini." Large numbers of spectators lined the streets Saturday at one o'clock to marvel at the woman driver who wore a thick black veil and expertly avoided traffic hazards.

Music at the armory show was furnished both days by members of Whipple's orchestra who also played for free dancing last night and Friday. A special matinee was given for Medford children yesterday morning, most of the younger population thoroughly enjoying Vanline's magic feats.

The Lions benefit fund for the blind was substantially swelled, and according to Mr. Hays it is the hope of the club to make their automobile show an annual event.

## Serious Shortage of Skilled Laborers

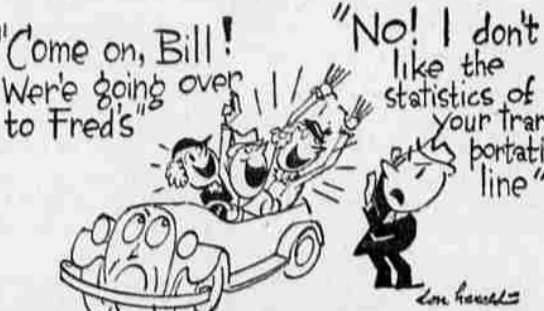
CHICAGO, Feb. 8.—(AP)—A serious shortage in skilled labor due to the business upturn was reported today by the nation's industrial executives. Though hundreds of technical jobs were opening, trained men could not be found to fill them, a three-day conference of the business leaders disclosed.

The shortage was described as most acute in the automobile and machine trades, although felt by industry in general.

ROSEBURG, Ore., Feb. 8.—(AP)—Fred Perdue of Roseburg was arrested here last night on a charge of passing altered U. S. currency. Perdue, who is to be surrendered to officers of the treasury department, is accused of having passed several bills which he had raised from \$1 to \$10.

## 1-MINUTE SAFETY TALKS

By Don Herold



## THE RECORD OF "THE LINE"

Before we buy a ticket on any railroad, steamship, or airplane line, we are pretty sure that the line has a good record of safety.

Yet we'll accept without a quail a ride in an automobile driven by almost any hairbrained idiot.

You wouldn't think of buying a ticket on a railroad whose employees permitted 36,000 to be killed and nearly a million injured annually.

We'll even climb merrily into the rumble seat of a roadster driven by a friend we know definitely to be three sheets in the wind.

The automobile is all right. Few accidents are caused by the automobile itself. It is the MANAGEMENT which is wrong—and WE are the management. The automobile's bad record is OUR bad record.

And an automobile can go just as fast as a train, can kill just as hard, crumple a whole lot more easily, and it hasn't the benefit of rails to guide it, or an elaborate system of signals to slow it up, or grade-crossings at intersections.

Every time we step into a motor car we should reflect that we have bought a ticket on a transportation system with a lousy record—our record—and drive with resolution to protect our hide and the lives of others, and to improve the record of "the line."

The reputation of the automobile in unsafe hands, according to the Travelers Insurance Company, is nearly 36,000 deaths and a million persons injured annually.

And we should learn how to say "NO!" to invitations from careless or liquorated "engineers" of other cars.

## FITTS FREED OF PERJURY CHARGE

LOS ANGELES, Feb. 8.—(AP)—A jury verdict clearing District Attorney Byron Fitts of perjury charges marked the end today of one of the most bitter legal and political battles in Los Angeles history.

## Income Shares

Maryland Fund: Bid \$18.97; asked \$20.51.  
Quarterly inc. shares: Bid \$1.80; asked \$1.68.  
BEND, Ore., Feb. 8.—(AP)—A spring-like southwest wind blew over the central Oregon plateau today and the temperature soared to 45 degrees, 40 degrees above yesterday afternoon's mark.

## Young and Farrow Feature Cadillac and La Salle Cars

In engineering and in appearance, the 1936 Cadillac and LaSalle cars comprise three major groups; the newly-created Cadillac Series Sixty; the Cadillac Fleetwood Series, and the LaSalle, according to E. W. Farrow of the Young and Farrow Motor Co., new Medford Cadillac-LaSalle dealers, located in Young's Service Shop on North Front street.

The series sixty, a smart compact car, with V-8 motor of more than 125 horsepower, eclipses the performance of any previous Cadillac.

The aristocratic Cadillac-Fleetwood series includes the larger V-8's, the V-12's and the big Cadillac V-16. In this group are five chassis types and 30 body styles, all of the latter being custom-built by Fleetwood.

The stunning new LaSalle, streamlined as before, but even more distinguished than its style-setting predecessor, is offered in four bodies by Fisher. Equally distinguished is this LaSalle in acceleration, in hill-climbing and in road speed.

## Oregon Milk Law Amended Held Valid

PORTLAND, Ore., Feb. 8.—(AP)—Circuit Judge Hall S. Luck upheld constitutionality of the Oregon milk control law as amended by the special session of the 1935 legislature today.

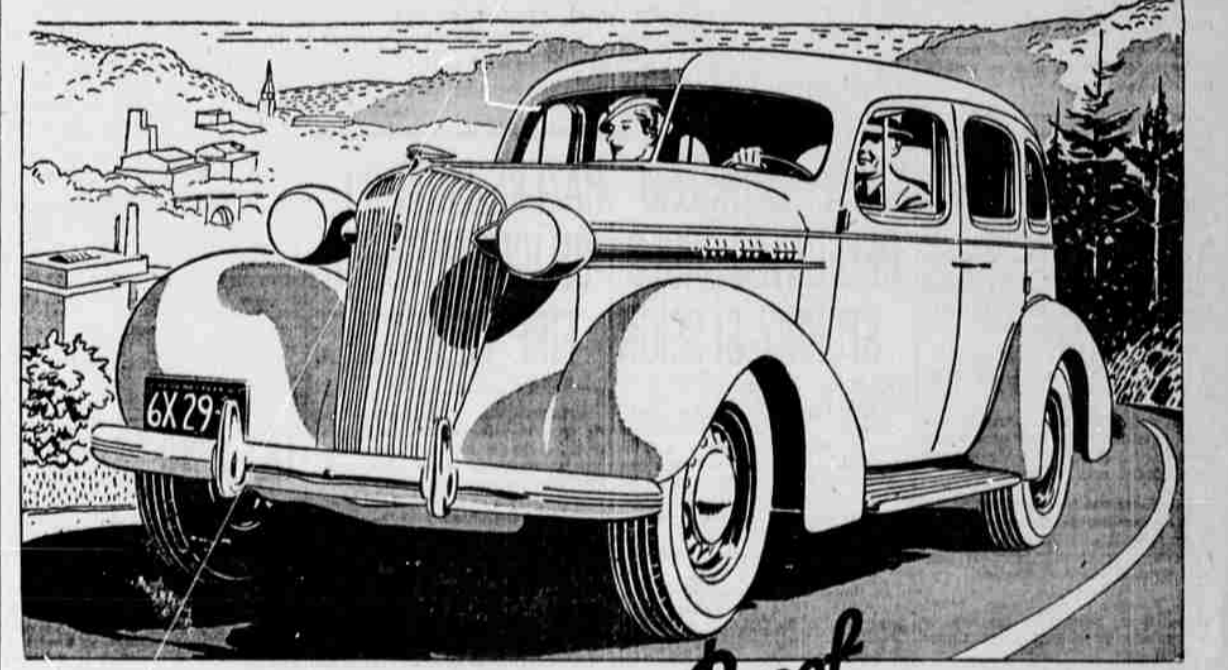
The Oregon milk control board has the right to fix milk prices, establish surplus milk pools and exact fees from producers to cover expenses of administration, he held.

The opinion was given in the suit brought by a group of grade B milk producers who sell their products to the Brandes creamery.

AMERICA'S LARGEST SELLING GASOLINE Mobilgas

GENERAL PETROLEUM CORPORATION

# Fact: YOU GET MORE FOR YOUR MONEY IN OLDSMOBILE



BE as critical as you like—it's your money you are paying out and you are entitled to the most that every dollar will buy you... That's why we say—go see the Oldsmobile! Look at its size. Try out its roominess. Count up its modern fine-car features! Note for yourself Oldsmobile's every convenience, every provision for extra safety, extra comfort, increased economy and extra long life... Then consider this—Oldsmobile "The Car That Has Everything"—is priced but a little above the lowest!

THE SIX • THE EIGHT •  
**'665 • '810**

From \$665 and up... Rights \$810 and up. See prices at Lansing, subject to change without notice. Safety Glass standard equipment all around. Special accessory groups extra. Car illustrated in the Six-Cylinder 4-Door Sedan, \$795 list. A General Motors Value. \* 6% G. M. A. C. TIME PAYMENT PLAN.

**Proof** OLDSMOBILE has every fine-car feature... none left out

- KNEE-ACTION WHEELS for a restful, gliding ride.
- SUPER-HYDRAULIC BRAKES for quick, straight-line stops.
- "TURRET-TOP" BODY BY FISHER for greater protection and beauty.
- CENTER-CONTROL STEERING for effortless, true-course driving.
- RIDE STABILIZER for level, swaying-free riding.
- BIG, OVERSIZE TIRES for additional comfort and traction for stops.
- NO DRAFT VENTILATION for plenty of fresh air without drafts.
- SAFETY GLASS for extra protection all around.

"The Car that has Everything"

132 South Riverside J. J. OSENBRUGGE Phone 1109

Hotel San Pablo  
SAN PABLO AVE. AT 20TH STREET  
OAKLAND CALIF.

Down Town Central

A Home Away From Home

Completely Renovated --- and Redecorated

RATES  
With detached bath from \$125 daily  
With Bath --- from \$175 daily

FREE GARAGE NEW MODERN COFFEE SHOP

DIRECTIONS TO HOTEL  
Stay on Main Highway (San Pablo Avenue) directly to 20th Street  
Management—Harry B. Strang