

### BUILDING PERMITS DO NOT DISCLOSE FULL VALUATIONS

#### Fail To Reflect \$100,000 Expended During Year, Report Of Inspector Says —Electric Sales Increase

More than \$100,000 not reflected in building permits was expended on certain Medford buildings during 1935, Frank H. Rogers, city inspector, stated in his annual report submitted to the council last night.

The valuations presented by the building permits do not reflect the true conditions as existed during 1935, the report said in referring to accessory expenditures.

The 182 building permits issued in 1935 represented a given valuation of \$116,013 though the actual valuation was about \$150,000, the report stated, this being an 18 per cent gain over the 1934 figure.

**Large Gain Reported**  
"Electrical merchandise sales increased by a large percentage over the 1934 total and while it is impossible to get definite figures on these sales it is safe to state that approximately 400 ranges, 300 refrigerators, 600 radios and 150 oil burners were sold during 1935," Mr. Rogers said in his report. "The figures refer to sales only within the city."

The report asserted that enforcement of a new ordinance regulating installation of oil burners and tanks has had a direct bearing on the reduction of insurance rates.

Mr. Rogers told the council that he had been receiving complaints of radio interference in increasing numbers and volunteered to do the required work in checking protests and removing the cause of interference if the city purchased the necessary equipment which he estimated at \$75. Mayor George W. Porter referred the matter to the building and light committee.

**Complaint Received**  
C. C. Furnas reported that a study disclosed that the same rate of interest received on Medford funds is being paid in other cities of the state. "Since we can't get a more favorable rate," Mr. Furnas recommended that the rate of one-fourth of one per cent per annum on minimum monthly balances in excess of \$1,000 be accepted, and the council so voted. The question arose two weeks ago when the United States National bank of Portland asked the council to confirm its payment of this rate.

Mayor Porter read a letter from the Sixty-first Memorial Park association protesting against the appearance of the city dump near its cemetery, pointing out that it is endeavoring to beautify the surroundings. The matter was referred to the parks and playgrounds committee for recommendation.

### CLAIM GILLETTE WILL ADMIT GUILT

Virgil O. Gillette, former secretary of the Medford Eagles lodge, charged with larceny, by embroiling himself in the city funds, yesterday waived preliminary hearing in justice court and was bound over to await the action of the grand jury.

Gillette plans to enter a plea of guilty and throw himself on the mercy of the court, Sheriff Syd L. Brown and District Attorney George A. Coddling said today. It is understood Gillette will ask for a parole. He was scheduled to enter his plea in circuit court late today or tomorrow.

Gillette is specifically charged in the complaint with the larceny by embezzlement of \$200 of the fraternal organizations' funds. A shortage of \$2800 is alleged, against which a credit of \$700 has been allowed leaving a shortage balance of \$2100.

Gillette has been employed by the Medford Ice & Storage company, and is more or less well known in this city where he has lived for several years.

**Weather**  
Northern California: Fair tonight and Thursday, with some cloudiness on north coast and local valley frosts and fog Thursday morning; gentle, variable winds off the coast.

Oregon: Partly cloudy, occasional rain on north coast tonight and in northwest and on coast Thursday; valley fog; no change in temperature; moderate east to south wind off coast.

The following Articles may be Purchased by the Federal Housing Act Loans . . .

**BETTER HOUSING PROGRAM**

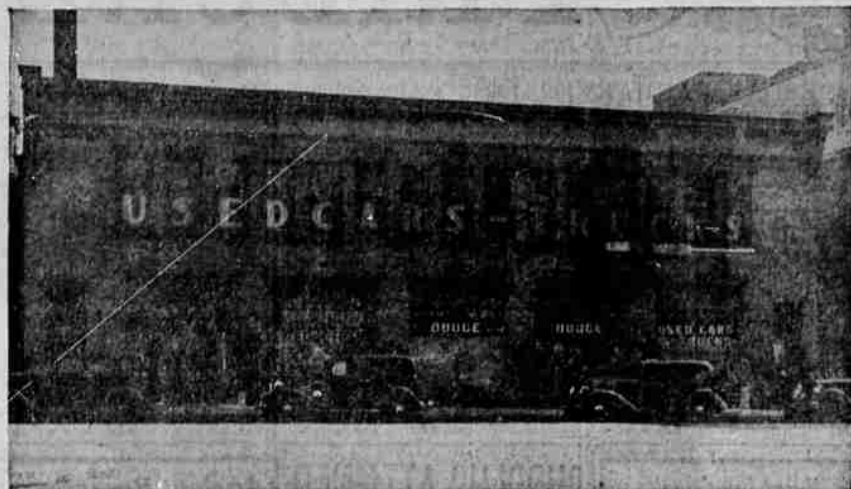
**Nothing Down and Three Years To Pay!**

Buy Them at the Medford Hardware

MYERS PUMPS  
MYERS HAY RACK and EQUIPMENT  
BEST QUALITY PAINTS  
BATHROOM OUTFITS  
ELECTRICAL FIXTURES  
KALSOMINE  
PIPES

**Medford Hardware Co.**  
SOUTH BARTLETT

### Modernization Re-Creates Store



Above is shown "before and after" views of a Pittsburgh, Pa., building that was modernized at a cost of \$9,782. In this case a deserted and virtually worthless property was rejuvenated into a modern, sales-compelling grocery. Similar modernization jobs may be done in any section of the country through revised regulations governing the Federal Housing Administration's modernization credit plan. Under the new arrangement a borrower may apply at private lending institutions for credit in amounts up to \$50,000 to repair commercial or commercial-residential properties. Modernization credit will also be allowed for machinery and equipment of certain types. Formerly, modernization credit was only available in amounts up to \$2,000.

### NEW GUILD AIMS AT GRAND OPERA FOR ALL OF U. S.

PHILADELPHIA (UP)—Creation of a national grand opera center is being perfected by the American Opera Guild.

Carefully wrought designs of the organization will produce a national campaign to bring opera, foreign and native, out of its present setting and give it the place it deserves as an elevated and human form of art.

According to these plans, many of which already have taken shape, an important movement in the history of American music is under way.

The structure of the new society is somewhat analogous to that of the Theater Guild. Subsidiary groups will be formed in nearly every major city of the country, especially those which line the Atlantic coast.

A group of Philadelphia artists, among whom are Rollin W. Van Horn, Jan Rudlow, Dr. Walter Grigalis, and Robert Steel, are directing the ambitious venture.

Each work will be cast, costumed, and mounted here. In every detail pertaining to the presentation of opera, the personnel will be composed entirely of Americans.

Each member guild will be set up by enrollment campaigns to be conducted by officers in various cities. After the work has been seen by "home-subscribers," it will go on the road. These traveling productions will be complete in every respect, including orchestral and stage management, chorus, costumes, scenery, and lighting.

The keyword of the new movement is "American." The basic plan is not only to provide a permanent home for American opera, but also to instill among Americans a more sympathetic appreciation of its meaning and attraction.

One of the deeper objectives, however, is the establishment of a future home for the Guild in the form of a municipal opera house. This home will become the active center of the indigenous opera movement.

### NEW BRITISH KING PROCLAIMED WITH COLORFUL RITES

(Continued From Page One.)

new king's \$50,000,000 subjects throughout a quarter of the world. Wireless, the modern conqueror of space, was used for the first time in such a British royal ceremony.

**Fly Royal Standard.**  
The royal standard, which had not flown over Buckingham palace since King George and Queen Mary left for Sandringham before Christmas, then was run up over the palace, a quarter of a mile down the Mall. The band struck up the national anthem.

The earl marshal, his grace the Duke of Norfolk, and the garter king of arms remained within St. James' palace in attendance on King Edward, who decided to return to Sandringham late today to join the bereaved Queen Mother Mary.

The remainder of the official proclamation party, in five horse-drawn carriages accompanied by a contingent of life guards, drove off through Trafalgar square in a stately procession to Charing Cross.

There the proclamation was read a second time by the Windsor herald, Alfred Trevo Butler.

Down the Strand the procession then moved to the Temple Bar, ancient boundary of the capital city, where a silken cord across the street marked the border of London at the head of Fleet street.

The procession sought and gained admission to the city in accordance with the "ancient usages and customs of the city of London." The proclamation was read there for the third time.

**Heralds Challenged.**  
"Who comes there?" called the advance guard of the Lord Mayor of London. Silver trumpets sounded to meet the glittering cavalcade of heralds.

"The officer of arms, who demands entrance to the city to proclaim the king," replied the pursuivants for the heralds.

The silken cord barrier dropped and the pursuivants advanced to meet the Lord Mayor, crying, "The King is dead! Long live the King!"

The Lord Mayor joined the procession up Ludgate Hill, around St. Paul's cathedral, to the steps of the Royal Exchange, in the heart of London's business district.

The London ceremony was completed at that point with a fourth reading of the proclamation.

The document also was read in the dominions, in India, in northern Ireland, the colonies, the Isle of Man, Jersey and the various counties and municipal boroughs throughout the United Kingdom.

**GRANGERS ASKED TO BRING FOOD DISHES**  
All Grange members attending the Pomona meeting at the K. P. hall here Saturday are requested to bring a dessert and a vegetable 'wh or salad, according to an announcement by Mrs. John Hollmeyer, chairman of the home economic committee.

### TRACE OF REDFERN FOUND IN JUNGLES

GEORGETOWN, British Guiana, Jan. 22.—(AP)—One of three expeditions searching for Paul Redfern, missing American flier, reported today discovery of definite traces deep in the South American jungle of the aviator who disappeared on an intercontinental hop in 1927.

Art Williams, former United States army pilot, who heads one of the searching parties, said:

"We found definite traces where we were searching that Redfern landed there and was in the vicinity recently."

### 2 YEARS 6 MONTHS OLD ECHO SPRING

KENTUCKY STRAIGHT WHISKEY  
Distilled, aged and bottled in the heart of the Bluegrass of Kentucky.  
The Geo. T. Stagg Co., Inc., Frankfort, Ky.

**FULL PINT \$1.35 No. 184C**  
**FULL QUART \$2.65 No. 184A**

Every drop of this Whiskey is 2 YEARS 6 MONTHS OLD

**ECHO SPRING**  
KENTUCKY STRAIGHT WHISKEY

Available in Oregon

### TRACE OF REDFERN FOUND IN JUNGLES

GEORGETOWN, British Guiana, Jan. 22.—(AP)—One of three expeditions searching for Paul Redfern, missing American flier, reported today discovery of definite traces deep in the South American jungle of the aviator who disappeared on an intercontinental hop in 1927.

Art Williams, former United States army pilot, who heads one of the searching parties, said:

"We found definite traces where we were searching that Redfern landed there and was in the vicinity recently."

### 2 YEARS 6 MONTHS OLD ECHO SPRING

KENTUCKY STRAIGHT WHISKEY  
Distilled, aged and bottled in the heart of the Bluegrass of Kentucky.  
The Geo. T. Stagg Co., Inc., Frankfort, Ky.

**FULL PINT \$1.35 No. 184C**  
**FULL QUART \$2.65 No. 184A**

Every drop of this Whiskey is 2 YEARS 6 MONTHS OLD

**ECHO SPRING**  
KENTUCKY STRAIGHT WHISKEY

Available in Oregon

### Modern Exterior Dignity



Above is shown "before and after" views of a Massachusetts bank which underwent an exterior modernization recently. Several improvements were made in the plan and general appearance of the structure. The entire exterior was faced with cut limestone, and the former outmoded appearance of the building is now supplanted by an atmosphere of modern dignity. Such modernization projects may be carried out with funds obtained under the Modernization Credit Plan of the Federal Housing Administration. Full information may be obtained at any local office or by writing the Federal Housing Administration, Washington, D. C.

### SYRIAN DISORDER ENDS AFTER COUPLE KILLED

BEIRUT, Syria, Jan. 22.—(AP)—Nationalist disorders in Syria, blamed on Egyptian agitation, subsided today after two rioters had been slain and 40 gendarmes wounded in Damascus.

An organization of 144 rioters in Aleppo was arrested and held for trial.

Perhaps the only blind basketball team in existence was organized among blind students at the Alabama Institute for Deaf and Blind at Talladega in 1929. Players were guided by bells attached to the players and the goal.

### MARSHFIELD WILL ASK BIDS ON NEW CITY DOCK

MARSHFIELD, Ore., Jan. 22.—(UP)—The Marshfield city council voted to advertise for bids immediately for the proposed city dock. Construction is contingent upon approval of a \$10,000 bond issue up for vote January 31. Action to call for bids was taken upon recommendation of C. C. Hockley, PWA administrator for Oregon.

Lampson the bandit lost four henchmen in a frustrated raid near Alamosa, Brazil, recently. The rangers, aided by state police, held the barefoot gangsters at bay for hours and finally repelled them.

### SLIPPERY PAVING IN MORNING COLD COLLISION CAUSE

Pavement in this part of the state is icy and slippery in the early mornings, state police warned today in reporting the head-on collision near Ashland this morning of cars driven by Charles Witches and Mrs. Anne Warren, both of Ashland. No one was seriously injured in the crash, although all were bruised, when the Witches car, with Mrs. Witches as passenger, was struck by the south-bound Warren car near the south city limits of Ashland.

The cars collided near the center line of the highway, the front end of the Warren Plymouth striking the left rear wheel and fender of the other car. The Witches machine was spun around and ended up with the rear end in the ditch, while the Plymouth was badly damaged in the front.

Mrs. Witches received a broken rib and bruise, and Witches received a badly bruised knee. Mr. and Mrs. Warren were both cut by flying glass and were bruised. A physician treated them at the scene. Both cars had to be towed to Ashland for repairs.

On almost exactly the same spot yesterday morning a truck owned by Fritz Mosler of Medford went onto its side in the ditch, while trying to avoid striking a cow standing on the icy pavement. The driver applied his brakes, the truck switched ends rapidly and turned over on its right side in the ditch. Neither the truck nor its freight was damaged, police said.

In commenting on the accident this morning, state police said that while the Witches-Warren crash was being investigated two more minor cracks occurred when motorists drove up to the scene without slowing, and then lost control of their machines when they applied brakes on the frozen surface. Officers warned motorists to test their brakes at low speed on cold mornings to determine the effectiveness of their equipment in stopping their cars.

PHOENIX, Jan. 22.—(Sp.)—Thimble club of Oak Circle No. 242 will hold its business meeting and social at the home of Mrs. L. O. Caster, Friday afternoon. Mrs. Noah Chandler will be co-hostess with Mrs. Caster. All members are urged to be present, and also to remind others.

SALEM, Ore., Jan. 22.—(AP)—Frank C. McCulloch, Oregon public utilities commissioner, was informed he had been named on the intercorporate relations standing committee by the National Association of Railroad and Utility Commissioners at Washington. He will serve during 1936.

Japan's six great cities are Tokyo, Osaka, Nagoya, Kyoto, Kobe and Yokohama, in that order.

### "I put TERRAPLANE first because I put Safety First"



"Go ahead, kids . . . that car's got BRAKES!"

No one needs to be reminded that safe driving in winter, more than at any other season, calls for a car that is safe.

Then why not start this new year with the "safest car on today's highways?" Terraplane—with more new and important safety features than any other low priced automobile ever had!

**Bring Safety up to Date!**

For safer riding, safer steering, safer stopping, Terraplane brings you Radial Safety Control (patent applied for). Here is a revolutionary principle of front axle and spring design which new owners from coast to coast are hailing as the greatest safety feature in many years.

None but the best brakes are good enough. And no other low priced car but Terraplane meets that demand with Duo-Automatic Hydraulic Brakes (patent applied for). Latest and best hydraulics with a separate safety braking system that takes hold automatically if ever needed.

For added safety on the highway—greater steadiness on curves—two more 1936 improvements: Tru-Line Steering and the Rhythmic Ride.

**Safer Bodies! Safer Chassis!**

The world's first safety engineered chassis is now combined with America's first bodies all of steel, and seamless roof of solid steel.

There is extra safety, too, in Terraplane's record-breaking performance, to take you out of traffic "tight spots." And in the Electric Hand, an optional extra, for easier gear shifting and safer driving.

Drive safely in 1936—in a car that you know to be safe. Drive a new Terraplane.

**\$595**

and up for De Luxe models, f. o. b. Detroit. Standard group of accessories extra.

88 or 100 H. P.—115-inch wheelbase

**SAVE—with the new low HUDSON-C.I.T. 6% Time Payment Plan**

**PUT SAFETY FIRST THIS WINTER . . . BUY A TERRAPLANE NOW!**

**YOUNG'S CAR MARKET**  
39 SO. RIVERSIDE JERRY YOUNG