

AUTOMOTIVE NEWS

PENNINGTON WILL SELL GRAHAMS IN MEDFORD DISTRICT

The smartly styled 1936 line of Graham automobiles will be handled in the Medford area by Pennington's Battery Service, according to an announcement yesterday by Larry Pennington, head of the firm. A carload of the new cars, sensations at automobile shows throughout the country this fall, has just been received in Medford and the initial public showing will be featured by Pennington's beginning today.

In commenting on the supercharger on the new Grahams, Larry Pennington said: "This is undoubtedly the most important contribution of the year to the further development of the automobile."

All Engineers have recognized for years that the greatest problem confronting them was that of increasing the power and at the same time reducing the weight of automobile engines.

"The Supercharger definitely answers this problem. It automatically mixes the charge of raw gasoline with compressed air before it reaches the cylinders, resulting in an explosion so powerful that six cylinders accomplish the work of eight. Naturally there is a corresponding saving in fuel."

"So far reaching is this development and so obvious are its benefits that there is no question about the rapid obsolescence of motors in which weight and horsepower are unduly out of proportion."

"In fact the efficiency of this new six-cylinder engine corresponding to eight-cylinder performance, has already resulted in the elimination of the heavy eight-cylinder model from our line. It was this eight in which we introduced the supercharger two years ago."

"It is inevitable that this same influence will penetrate the entire industry. The day of cars overburdened with needless cylinders is at an end. Wasteful engine weight and excessive fuel consumption can no longer survive with the advent of the supercharger."

"The aviation industry presents emphatic confirmation of this assertion. It has progressed phenomenally since the supercharger was introduced to aviation engines. The same is true of speedboats and racing cars. All have finished brilliant new performance records under the spur of the supercharger. Every record, in fact—on land, on water and in the air—is held by the supercharger."

Pennington's Battery Service and Garage has been established in this city for nearly 14 years. Mr. Pennington opened a small shop on Front street in the spring of 1922 and a year later his expanding business necessitated larger quarters in the Barnum building. Six years later, Larry Pennington moved to his present fine quarters on North Bartlett street with a floor space exceeding 1,000 square feet.

Complete automotive service is featured and a complete island gasoline pump unit is a part of the well equipped plant.

Larry Pennington has been actively identified with civic and club affairs in this city since moving to Medford.

PETROLEUM SALES TO ITALY MOUNT

WASHINGTON, Dec. 21.—(AP)—Fueled by petroleum, exports from the United States to Italy and Italian Africa increased sharply in November, despite the government's efforts to discourage trade with belligerents.

The commerce department reported today that exports to Italy alone during the month amounted to \$9,954,918, compared to \$8,418,908 in November a year ago and \$6,821,366 in October this year.

Shipments of petroleum and petroleum products to Italy jumped to \$1,292,000 in the previous month from \$1,000,000 in October, and in November, 1934, only \$447,000.

WASCO TAX COIN HIGHER
THE DALLES, Ore., Dec. 21.—(AP)—Tax collection this year in Wasco county exceeded the total 1935 levy by about \$40,000. Sheriff Harold Sexton said. He reported receipts of \$93,986, about \$3,500 more than 1934 collections.

TOO LATE TO CLASSIFY

PHONE 969-B for re-upholstering, re-finishing, re-gluing, re-bush.

LOST—Child's blue blazer back of Washington school. Reward. Return to 908 W. 10th.

USED CAR SPECIALS
1934 Dodge convertible Coupe
1934 Pontiac 4-door Sedan, trunk
1934 Pontiac 2-door Sedan, trunk
1934 Buick Std. Coupe. Only 3,800 miles

1933 Buick 5-coupe, Coupe, trunk
1929 Buick Sedan
1932 Studebaker 5 conv. Coupe
1931 Chevrolet Coach with trunk
Several Others
SKINNER'S GARAGE
Buick Phone 102 Pontiac
FOR RENT—4 room house, 337 Astoria.

1130.00 BEDROOM suite for \$60.00 cash. Phone 346-Y. A. G. Anderson.
LOST—Knitted cap, with clip. Reward—Call 100.

Pennington Shows Graham "Supercharger"



The new Graham Supercharger, Series 110, Four Door Touring Sedan with trunk. In the Supercharger, Graham brings the magic of the Supercharger to the lower price field for first time.

1-MINUTE SAFETY TALKS

By Don Herold



TEMPORARILY DANGEROUS

No doubt scientists and traffic officials and road builders will eventually figure out ways to eliminate a large proportion of automobile accidents and deaths.

But that day may come too late for you. Unless safety efforts begin to produce results, there'll probably be around a million automobile injuries and 36,000 automobile deaths a year in America for some time to come.

Education of drivers and traffic regulations and improved street lighting and better law enforcement can no doubt cut these figures down two-thirds some time.

But you may not be here to enjoy this increased safety.

In the meantime, you've got to take care of yourself—and family. You'd better be your own safety expert.

The first thing the experts do is to study figures. They look for the danger spots and the danger hours, and give particular attention to such spots and hours.

You should drive always like a person on a street marked "TEMPORARILY DANGEROUS." Most streets and roads will some day be two-thirds safer than they are now. In the meantime, proceed with caution, as statistics on automobile accidents gathered by The Travelers Insurance Company show many deaths and injuries occur when people least expect danger.

JAPAN RESTRICTS TEXTILE IMPORTS

WASHINGTON, Dec. 21.—(UP)—Agreement by Japanese textile manufacturers and exporters voluntarily to restrict their cotton textile ex-

ports to the United States, was announced by the state department today.

The state department was informed of the agreement by the Japanese ambassador, Hiroshi Satto who conferred at length with Assistant Secretary of State Francis B. Sayre, in charge of trade relations.

The ambassador said the agreement was in effect to the extent that shipments to American markets are being voluntarily restricted.

Use Mail Tribune want ads.

LAKE 'O WOODS ROADS WILL BE OPENED FOR CHRISTMAS VISITORS

It was announced Saturday by the supervisor of the Rogue River national forest that both the Dead Indian and Pelican roads to Lake of the Woods would be opened for Christmas.

The supervisor stated that numerous requests had been made to open the road, by summer home permittees who wished to spend Christmas at the lake.

Machinery will start Monday removing the snow and unless an unusually heavy snowfall occurs, it is expected that the roads will be cleared for travel by noon of the 24th. Both roads will be kept open until the evening of December 25.

It will not be possible, it was explained, to open up the side roads to the summer homes, but the lower road along the east side of the lake will be plowed out and ample parking space at the south shore camp provided.

Radio communication between Lake of the Woods will be established Monday so that up to date weather news will be available. Recent reports from the lake indicate that there are 12 to 14 inches of snow there which will furnish excellent skiing.

The entire lake, except for a small portion near the mouth of Rainbow creek, is covered with perfect skating ice.

Zero weather in the mornings will make warm clothing essential for those who plan to spend the holidays at the lake. Forest service officials especially caution that all cars going into the area be equipped with chains.

Bend Warehouse Gutted
BEND, Ore., Dec. 21.—(AP)—Fire gutted the two-story warehouse of the Bend Hardware company last night. Firemen working in raw weather, prevented the flames from spreading to adjacent buildings. Two explosions preceding the blaze shook the city. Origin of the fire was not determined.

JENNINGS NAMED SNOWMEN HEAD; SPORTS PLANNED

Sam Jennings was elected president of the Snowmen Friday night in the Jackson County Chamber of Commerce building.

Kenneth Denman was elected vice president and Harold L. Larson was re-elected secretary-treasurer. The new officers were installed immediately after the election. The choosing of directors was postponed to early January.

The new president spoke about the opportunities southern Oregon affords for winter sports, pointing particularly to Crater lake national park as a paradise for snow enthusiasts. He said that inasmuch as the park service and the state highway commission are going to the expense and trouble of keeping lake highways open this winter, full use should be made of the park facilities.

"Not only should snow-sport devotees take advantage of the opportunities offered, but residents in general should make occasional trips to Crater to enjoy the spectacle of the park in its winter garb," Mr. Jennings said.

A brief business meeting will be held at 7 in the chamber of commerce next Friday to plan a New Year's outing at Crater.

Park officials yesterday issued this statement: "Weather: Weather conditions are now ideal for lake visits with cloudless skies, bright sunshine and crisp air. Snow is approximately five feet deep in the rim area, with ample space available for parking automobiles. Slopes for skiing and sleigh riding are numerous near the lodge. Persons are advised not to make cross-country trips of any distance unless accompanied by a member of the Crater lake winter crew familiar with the park terrain. A ski trail is

being marked from the lodge to park headquarters, a distance of a mile, and skiers are asked to use this trail in traveling between the two points. Facilities for warmth and comfort are available at park headquarters.

"Should weather at any time appear threatening, motorist planning trips via the south entrance can obtain weather and road information from the national park service office in Klamath Falls and from the Rain-bow garage in Port Klamath. Motorist approaching via the west entrance can obtain similar information from the national park service office in Medford. Telephones are located at the south and west boundaries and can be used by visitors in calling park headquarters for the last minute information.

"Oregon Caves National Monument: Snowfall is not heavy in this section and the highway to the monument from the Redwood highway, 20 miles away, will be open throughout the winter. The chateau will be in operation continuously and guided trips through the caves are available throughout the year. The Oregon Caves postoffice is closed but mail service is available through Grants Pass, 50 miles distant.

"Lava Beds National Monument: This monument is open to travel the year around. Approach roads are in good condition. A park ranger is stationed at Indian Well, administrative headquarters for the monument, and is available for information and other aid. On weekends when a sufficient number of visitors present themselves, special guided trips are afforded to the outstanding caves of the monument and to the monument historical area where Modoc Indian war was fought in 1872-73."

Lewis Super Offers Easy Pay Plan For Christmas Buyers
Good news for last-minute shoppers

who have little available ready cash to spend on Christmas gifts is the announcement that a variety of automobile accessories may be purchased from Lewis Super Service on Goodrich's easy credit plan with no money down, according to Jack Anstey, credit manager.

Goodrich Safety Silvertown tires, Goodrich Electro-Pac batteries, Goodrich boiler-type hot water heaters and Motorola auto radios are a part of the suggestions as gifts for motorists.

Lewis Super Service has recently been appointed sub-dealer for Western Air Patrol all-wave super home radios. These sets have airplane dials, Magnavox speakers and metal tubes. Shoppers who haven't yet decided what to give the family are urged, by Mr. Anstey, to inspect these new radios at the Lewis Super Service Station today.

SEMI-ANNUAL SALE
Now in progress
ETHELWYN B. HOFFMANN.

The New CHRYSLERS Are Here

DRIVE THESE NEW CARS

With the Famous Chrysler Automatic Overdrive

AND MAKE

Up to 23 miles to the gallon of gas

FOUR CARLOADS NOW ENROUTE FROM THE FACTORY!

Buy a New Chrysler or Plymouth for the Family for Christmas!

LANGE MOTOR CO.

38 North Riverside

CHRYSLER—PLYMOUTH

Phone 18



NO MONEY DOWN

ON A NEW 1936

Western Air Patrol

ALL-WAVE SUPERHET HOME RADIO

Airplane Dial Magnavox Speaker . . . Come in or Call Lewis Super Service Station and let us explain this easy term arrangement.

GIVE AUTO ACCESSORIES

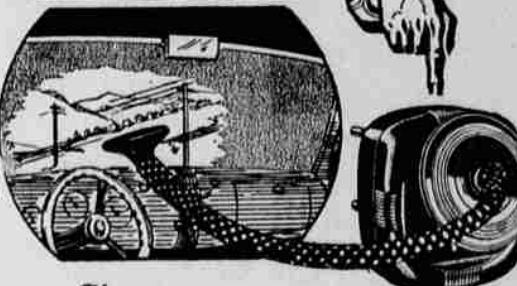
NO OTHER AUTO HEATER LIKE IT!!

Give a Famous Goodrich Safety Silvertown

Make This a Happy and a Safe Christmas

No Money Down

A Goodrich Electro-Pac BATTERY will insure a happy Xmas! NO MONEY DOWN



Give a Goodrich DeLuxe Boiler Type

Hot Water Heater

Its Comfort Will Be Long Appreciated

Use Our Original Budget Pay Plan It's in tune with the times—and an easy way for you to equip your car. Just come in . . . select what you need . . . show your license certificate for identification and—make the easy terms you want. We will install or deliver at once—no long investigation or delay.

OPEN SUNDAY PHONE 1300



NO MONEY DOWN

Motorola Super Power AUTO RADIO

The Magic Eliminator makes spark plug suppressors unnecessary

YOUR CREDIT IS GOOD HERE

LEWIS SUPER SERVICE STATION

Complete Automotive Service—Wrecker Service—We Never Close—8th and Front—W. L. Lewis, Mgr.



ANNOUNCES AS ITS NEW DEALER PENNINGTON BATTERY SERVICE and GARAGE

121 NORTH BARTLETT

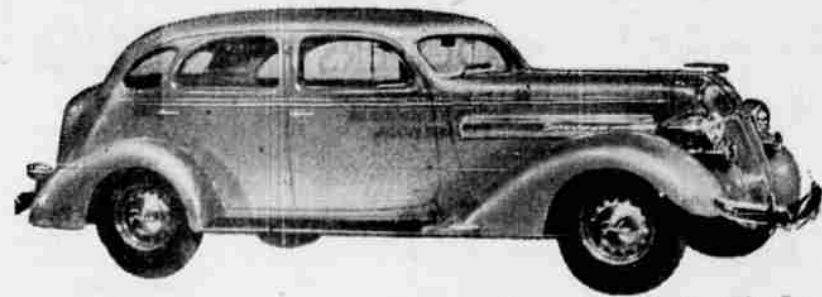
PHONE 903

Visit this attractive showroom today, and see the three great new Grahams. The new Graham Supercharger, Series 110, brings the magic of the supercharger to the lower price field. Highest motor efficiency yet achieved in an automobile!

The Graham Cavalier, Series 90, has a courtly elegance which distinguishes it from "mass production" automobiles. Superb performance and exceptional economy.

The Graham Crusader, Series 80, stands apart from the crowd in performance and quality as well as style. Beautiful as they are, these new cars will impress you even more with their ability to deliver the utmost in performance.

All Graham cars can be purchased on the 6% C.I.T. Credit Plan. Prices Begin at \$635 at factory



3 GREAT NEW GRAHAMS · The Supercharger · The Cavalier · The Crusader

THE STYLE AWARD GOES TO



You can put aside all past ideas of beauty when you go to see these magnificent new Grahams. An entirely new note in design. See the cars—and see if you don't agree.

Magic OF THE Supercharger AT A NEW LOW PRICE