

AUTOMOTIVE NEWS

WINTER CAMP FOR BOY SCOUTS WILL OPEN ON DEC. 26

Boy Scouts of the Crater Lake council are busy preparing for winter camp, which will open December 26 and close December 30. Equipment is being made ready for five days of strenuous use. Skills are being waxed, ski and snowshoe harness repaired and boots greased.

No doubt some of the young men have been extra helpful at home, as Christmas draws near, hoping Santa will be good and provide a pair of skis and ski poles, or pair of boots.

Camp will be at Government Camp near Crater lake, where conditions are ideal for winter sports. Gradual slopes are nearby for those who are learning to ski and steeper slopes for more experienced.

The United States park service is co-operating in every way to make the camp as enjoyable as possible. One of the buildings equipped with heating and cooking stoves, cots and mattresses, electric light, running water and other conveniences will be provided.

Credit for planning the camp and arranging necessary details goes to the camp committee, L. D. Jones, chairman, Dr. B. R. Elliott, George Gates, C. J. Boman and Frank Beum, A. O. Soderberg, Scout executive, who has had considerable experience in conducting winter camps for Scouts will be in charge. It is expected that several Scoutmasters will attend and assist.

Facilities permit a maximum registration of 30. First day registration of Scouts going to camp was 13, and included the following Scouts: Chet Ferguson, Jack Heyland, Worlow Purdin, Donald Yunker, Hugh Ferguson, Raymond Erickson, C. H. Paske, Arline Lewis, Geo. Gillings, Jack Hamilton, Homer Young and Albert Barrow.

EX-O.S.C. GRIDSTER HELD AS BANDIT

PORTLAND, Ore., Dec. 14.—(AP)—Ray Woodman, 21, former Portland high and Oregon State college football player, was arrested here early today with William Crooks, 30, after the holdup of a Portland Filipino. Police Captain Frank Ervin said \$32 taken was recovered.

Vincent Costello, the victim, said the two men offered him a ride and then drove him several blocks and robbed him.

One of the gunmen struck him when he remonstrated, Captain Ervin said. Costello noted their license number when they drove away, and headed for police headquarters.

Patrolmen gave chase and overhauled the fugitive car, Captain Ervin said the youths told them they had been drinking.

Woodman went to Oregon State college two years, but unexpectedly failed to return for football this fall.

Flight 'o Time

Medford and Jackson County history from the files of the Mail Tribune 10 and 20 Years Ago

TEN YEARS AGO TODAY
December 15, 1925.
(It was Tuesday)

Battling Siki, Senegalese pugilat, found murdered in New York street.

Jefferson High of Portland declines to play Medford high a Christmas Day game.

Many Medford and valley dancers are becoming "adept at the Charleston."

State Horticultural society meet to open here tomorrow, with pear experts from all parts of the Northwest in attendance.

Settlement of the French war debt "hits a snag" in Congress.

Heavy fog covers the valley, accompanied by cold and frost.

Dr. and Mrs. B. E. Elliott entertained yesterday at their home, 5 Corning Court, in honor of their tenth wedding anniversary. In commemoration of the same, Mrs. Elliott received 10 pennies, 10 dimes, 10 \$1 bills, 10 \$5 bills and 10 \$10 bills from the doctor.

TWENTY YEARS AGO TODAY
December 15, 1915.
(It was Wednesday)

Great outpouring of citizens to buy a broom for a dime, at local store.

Prosecuting Attorney Kelly leaves to attend state convention of prosecutors at Salem.

Sugar beet factory to be established at Grants Pass.

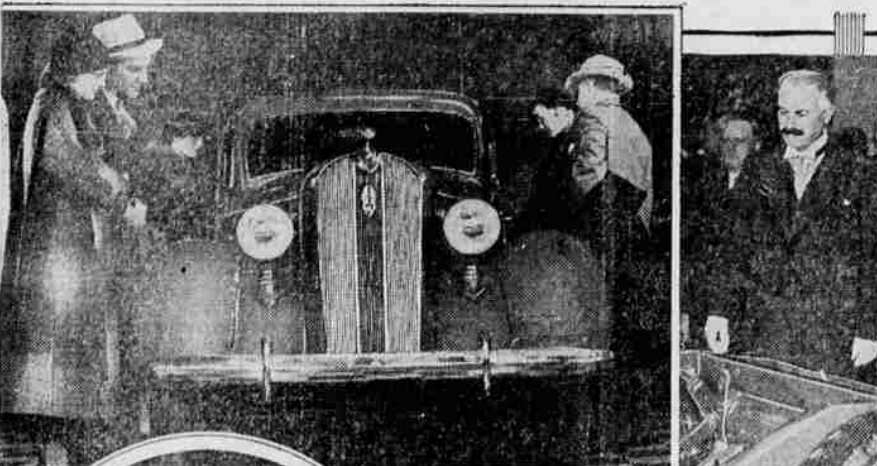
Mary Pickford at the Star in "Lottie Patis" "Neal of the Navy" at the Page.

Autobots warned to get their 1914 plates before January 1, or face arrest.

A skiff of snow, that melted as it fell, gave hope for a "White Christmas" this morning.

KMAS PHOTOS
Holiday Specials Now!
FEARLESS—Opposite Holly Theatre

Throngs See New Autos at New York and Paris Shows



THE LATEST motor car creations on two continents drew vast throngs to the New York and Paris Auto Shows as the automobile industry turned its calendar to 1936 with the introduction of new models. A section of the Paris exhibition is shown (lower right) a few minutes before President LeBrun of France (upper right) officially opened it. Secretary of Commerce Roper inaugurated the New York Show in Grand Central Palace, the first of 57 similar exhibitions scheduled in the United States in November. The new Plymouth for 1936 is the center of attention for the groups of show visitors shown in the photos at the left.

HOW TO HANDLE LATE PEARS IS BOOKLET TOPIC

One of the biggest hits of any year promotional material gotten out by the Oregon-Washington Pear Bureau is the leaflet, "How to Handle Late Pears," recently published by the bureau. This is a practical manual on the physical handling of pears.

Not only jobbers, brokers, chain stores, and retailers, but many other types of businesses have flooded the bureau with requests for this manual, particularly transportation companies. Requests have come in from Canada as well as this country.

A typical request reads, "This is one of the commodities that we have been looking for some information on for some time, and one about which we know the least. Therefore we would be very grateful to you for this information."

The principal article in the manual is by Prof. Henry Hartman, horticulturist for the Pear Bureau and Oregon State college. Since 1924, Prof. Hartman has carried on investigations on pear harvesting, storage, transportation and storage diseases. Six years of this period was spent in investigation at terminal markets.

Members of the Pear Bureau are listed in the leaflet—a feature that is being carried out in all the new bureau material, together with a statement that "membership is restricted to those firms and cooperative organizations which maintain their own cold storage facilities, exercise control of their fruit from tree to car and whose label is used only on fruit packed under their supervision."

The leading varieties of winter pears are reproduced in their natural size and color, and a map of Oregon and Washington showing the pear districts is included.

BONNEVILLE HIGH VISITOR MAGNET

PORTLAND, Ore., Dec. 14.—(AP)—The Portland chamber of commerce announced today that Bonneville dam has drawn more visitors since it was started in December, 1933, than any other Oregon attraction.

Runners-up to Bonneville dam, which attracted 318,493 visitors over the two-year period, were Crater lake with 226,400 visitors and Oregon Caves with 88,170.

However Crater lake and Oregon Caves are not on natural highway routes like Bonneville dam on the much-travelled Columbia river highway.

Besides those registering at Bonneville, thousands viewed the structure from highway promontories.

Radio's 'Raucousness' Winning Talk Topic

McMINNVILLE, Ore., Dec. 14.—(AP)—Terrell, Dairies of Oregon State, taking as his subject "Radio's Raucous Rattle," won an intercollegiate after-dinner speaking contest here last night, Dick Reath of Pacific university and William McAdam, Willamette football star, were second and third respectively. Speakers from Linfield, Portland university, Albany and Pacific college also were entered.

"KICKENICK" Undergarments that fit at Ethelwyn B. Hoffmann's

Young Legislator



WILLIAM L. DICKSON
William L. Dickson, Multnomah county democrat, was one of the youngest in the legislature even during his second term in 1935. He sought reduction of small loan interest rates.



(Continued From Page One.)
are one or two foremost economists in the country who are honest. But, so far, only two economists who are sufficiently well-known here to be recalled offhand by their brother economists have written publicly in favor of the Townsend movement. It appears that both have received fees. This fact would indicate that the boss-economist question boils down to the simple issue of whose boss (as Mr. Roosevelt says) has the chicken-pox.

It is rather deep stuff, but trustworthy economists say the fallacious economic reasoning of the Townsends can be proved, if you take their 1929 base and follow it through. In other words, to get the effect of the plan, consider for example only that

many persons over sixty are now employed. The first effect would be to withdraw 4,150,000 elderly persons from their existing gainful employment. Apply the economic effects of this withdrawal upon a prosperous economic system, the economists say, and you have the scholastic explanation of the error of the Townsend way. Only economists can explain that in their classrooms. In fact, only economists need to worry about that

PORTLAND TURKEY PRICE IMPROVES

PORTLAND, Ore., Dec. 14.—(AP)—The Portland turkey market continued good today, although there was some suggestion of another possible cut of a cent a pound for very heavy toms.

Producers appeared generally willing to pay the recent price, however, for storage purposes. Price for dressed turkeys continued from 22 to 23 cents.

Use Mail Tribune want ads.

YOUR GIFT DOLLARS GO FARTHER AT Wards

Drive in warmth and comfort this winter with WARDS tested quality accessories!

An Outstanding Value Wards Supreme Quality

HEATER

749

Gives you all the fine quality features of heaters nationally advertised to sell up to \$161! Big 4-row core—48 hot water tubes! Adjustable twin door deflectors! 4 blade 5" fan! Delco motor mounted in cork! Vibration-proof mounting throughout! All-speed adjustable switch with a soft light glowing on knob as a shut-off reminder!

Start Easily in Coldest Weather with Wards Winter King!

45 bigger, thicker plates (15 to a cell) instead of 39! That means extra pep! Plenty of reserve for emergency! 24-month service adjustment guarantee! Exch. Price..... 625

Change to Wards Supreme Quality Spark Plugs Now!

Install a set today for easier starting—better performance—gas economy! Yet Supreme Quality Spark Plugs cost but 1/3 as much as comparable plugs. 33c Ea. 33c

Rear View Mirror with a Clock, 30-hour movement! Radium dial! 169

RADIATOR FRONT 79c
Bumper Bar Stops 69c
FENDER FLAPS 49c pr.

MONTGOMERY WARD
117 SOUTH CENTRAL TELEPHONE 268

Speedway Is Beautified



Whenever speed is required, these young R K O starlets take to Kelly Pettilo's Gilmore Speedway Special No. 5 to get them there in a hurry. Above (left) is pictured Betty Grable, featured in "Follow the Navy" acting as the riding mechanic with Lucille Ball, who has a featured lead in "Chatterbox," "winding 'er up." It was this same car that Pettilo drove to a sensational win at Indianapolis this year and in which he also set a new record for the 500 mile course of 106.24 miles per hour.

61 GRADUATE FROM CCC COOKS CLASS

CAMP WIMER, Dec. 14.—(Sp1)—Sixty-one student cooks, bakers and mess sergeants received their diplomas at graduating exercises held at Wimer Friday. The total of men graduated from the Medford district cooks, bakers and mess sergeants' schools since they began in January of this year is now 345. All of these men were returned to their camps to put theory into practice in filling the four or five thousand stomachs of CCC men in this district. Friday's class was the largest ever graduated.

A unique final examination was held by Wimer's 19-year-old baking instructor. He directed the students to bake a variety of buns, cakes and pies. All his students qualified and the company straightway made away with the examination papers.

The general elevation of Kaffa, a district in the southwest part of the great Abyssinian plateau, is about 8,000 feet, while several peaks are over 10,000 feet.

Give Your Car a Christmas Gift

AUTO TOPS

SPECIAL HOLIDAY PRICES

CLOSED CARS	OPEN CARS
Coupe \$2.50 installed	Roadster \$5.50 installed
Sedan or Coach \$5.00 installed	Touring \$6.50 installed

DOZENS OF MATERIALS EVERY JOB GUARANTEED

Radiator Covers	Seat Covers
A Gas Saver! 75c installed	Coupe 75c up Sedan \$1.50 up Coach \$1.75 up
FLOOR MATS	AWNINGS
Canvas	Tent and Flies

If It's Made of Canvas We Make It!

Medford Tent and Awning Works
F. F. Burk Prop. 314 East Main St.

ANNOUNCEMENT

RUDY'S SERVICE

9th and S. Central Ave.

Featuring

Gilmore Products

Chek-Chart Lubrication

Patronize an Independent Dealer