

AUTOMOTIVE NEWS

PARK ROAD, CREEK BRIDGE PROJECTS START TOMORROW

The Prescott Memorial park road and Bear creek bridge projects will be launched tomorrow. Both are WPA jobs.

The park project calls for the widening, grading and graveling of more than four miles of road leading from the end of East Main street to the new recreational center where a CCC company is now encamped. The total cost of the project is about \$27,000. The work will last about six months. A crew of 25 men will start on the job tomorrow, Kenneth S. Perry, senior WPA engineer said. Work will be done under the supervision of Fred W. Scheffel, city superintendent.

The Bear creek project provides for the construction of a bridge of heavy timber as a continuation of McAndrews road over the stream. The plans call for a total outlay of \$8,840. A clearing crew of five men will launch the work tomorrow, Paul B. Rynning, county engineer said. The work is to be completed in about three months, employing 12 men at the peak, he stated.

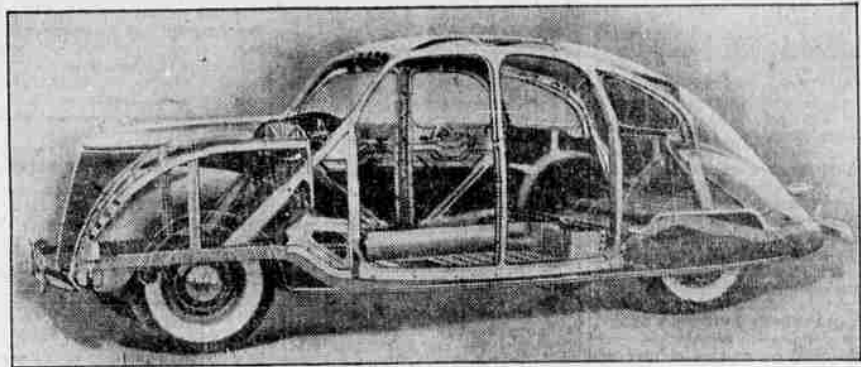
The bridge, long felt a necessity, will provide a direct link with mills and the United States forest service ice warehouse in that end of the city. It will also enable trucks from Carter lake to skirt around the edge of town without passing through the business section. To get across the creek now, cars must ford the stream and not infrequently automobiles have become stuck in the mud.

When the park road is completed the memorial recreation area will be brought into easy accessibility of Medford motorists. The park is considered one of the most beautiful settings in southern Oregon and it is anticipated that it will be widely used next year by residents of this locality.

Another WPA project now being carried out provides for a survey of all county bridges and the erection of signs thereon, the correction of county maps and the classifying of notes in the engineer's office. The work is being supervised by Mr. Rynning.

Special Low Cabin Creams, 30c lb. The Great 238 S. Central.

Lincoln Zephyr Shown in Medford



THIS PHANTOM drawing shows the all-steel "bridge truss" body construction of the new 110-horsepower V-12 Lincoln-Zephyr. This new car is the product of the combined resources of Ford and Lincoln and is the newest entry in the medium-priced field. The entire body structure takes the form of the conventional chassis frame. The various parts are welded into an integral unit. The steel

top, side and rear panels, cowl, underbody assembly and floor are welded to the body framework and are part of its strength—an innovation in body manufacture. There are some 8,000 welds, believed to be the largest number ever used in an automobile. Center of gravity of the car is unusually low, one of its many outstanding safety features. The floor of the body is only 12 inches from the ground.

DOE YOUNGSTERS TO ACHIEVE WISH

Telephonic assurance was received yesterday morning by Mrs. Richard Doe of 1700 Prune street that her children, Margaret 13, and Janina 15, were safe in Heppner following their all-night wandering in the woods near that city on a projected hitch-hiking trip to join their mother here.

An Associated Press dispatch from Heppner published in the Mail Tribune Friday was the first word received by the mother that the children had left the home of Mrs. Doe's brother, Richard J. Graham, who lives about 18 miles from Heppner, and had started the long trek to Medford to spend Christmas.

Loosing their way, the youngsters wandered all night in the mountain fastnesses and finally reached the home of a rancher, suffering from exposure and fatigue.

They were taken into Heppner and according to Mrs. Doe will achieve their wish to spend the holidays with her here.

Springfield Recall Falls

SPRINGFIELD, Ore., Dec. 7.—(AP)—Councilman Earl Thompson received a 320 to 137 vote of confidence at a recall election yesterday, tabu-

lation of votes showed today. Three other city officials won in a recall election Tuesday.

Use Mail Tribune want ads.

Firestone BATTERIES ON TIME



Battery troubles won't wait for pay day, but we will.

If your battery is getting weak, come in now and replace it with a new Firestone. Pay for it as you use it with our no-money-down special budget payment plan. Don't delay and take a chance on the extra expense of service calls, motor trouble, etc. Come in today. We have a Firestone Battery to meet every need and every pocketbook.

Firestone AUTO SUPPLY & SERVICE STORES

Ninth and Riverside. Phone 520

TOURIST TRAVEL IN STATE ON UP

SALEM, Ore., Dec. 7.—(AP)—Non-resident motor registration in Oregon this year will reach 100,000 if the ratio of increase continues for the last month of the year.

Secretary of State Snell reported today that at the end of November 96,883 out-of-state cars were registered. This is an increase of 4,600 over the entire registration in 1934.

The months of March, April, May and October were the only ones which showed decreased registration, but the percentages of increases overcame the drop, Snell said.

Norman Gail Will Operate Service Station In City

Gail's Union Service, located at Jackson and Riverside in Medford, was opened to the southern Oregon motoring public during the past week under the management of Norman Gail who returned to this city recently from Roseburg where he and Mrs. Gail, formerly Ellow Mae Wilson, had resided for more than a year.

This conveniently situated station was known as the Union Service station before Mr. Gail took possession. He is an independent dealer for Firestone tires, batteries, accessories, lubrication, car washing, battery and tire service are featured by Gail's. Both Mr. and Mrs. Gail are being welcomed by friends in Medford where Mr. Gail was for five

Allen and Taylor Attend Dodge Meet

W. W. Allen and L. C. Taylor of the Pierce Allen Motor company, left Saturday for Seattle where they will attend a Dodge dealers meeting. They expect to return to Medford Tuesday.

A carload of 1934 Dodges was unloaded by the Pierce Allen Motor company, during the past week.

STILL Operator Paroled PORTLAND, Ore., Dec. 7.—(AP)—Tom Paskille pleaded guilty in district court today and received a suspended jail sentence of a year and was fined \$1000 for operating stills.

BETTER BUSINESS CHEERS HOTELMEN

PORTLAND, Ore., Dec. 7.—(AP)—Oregon State Hotel association delegates elected W. W. Chadwick of Salem president at their annual convention here today. Reports of better hotel business on the Pacific coast cheered the delegates. A banquet and dance at the Benson hotel tonight will conclude the conclave.

Record Cargo REEDSFORT, Ore., Dec. 7.—(AP)—The Point Loma's cargo of 1,267,855 feet of lumber constituted the largest load ever taken out over the Umpqua river bar.

NAME this new kind of MOTOR \$10,000⁰⁰ in CASH PRIZES

- 620 CASH PRIZES
- FIRST PRIZE . . . \$2,500.00
- SECOND PRIZE . . . \$1,000.00
- THIRD PRIZE . . . \$500.00
- 617 Other Cash Prizes ranging from \$250.00 to \$5.00



Get simple rules and Free Entry Blank at any Nash-LaFayette showroom.

An amazing new kind of motor in an amazing new kind of car! A bigger, faster, more luxurious car built for former small-car owners. Yet, because of its motor, one that they can afford to own and run! It's lower—and wider between the rear wheels in relation to height and length than other cars! It has big, super-hydraulic brakes! And the world's first complete, seamless, one-piece all-steel body! See it! Drive it. Then tell us what words would describe its new kind of motor. The Nash Motors Company, Kenosha, Wis. Nash Automatic Cruising Gear available at slight extra cost.

The NEW 1936 NASH "400" \$665
NEW 6% C. I. T. TIME PAYMENT PLAN and up, f. o. b. factory. Del-coe models \$10 to \$15 higher. 1936 LaFayette \$595 and up, f. o. b. factory.

123 S. Riverside WALTER W. ABBEY, INC. PHONE 303



THE NEW 1936 Chrysler Airflow

The original and only true Streamlined motor car built in America!

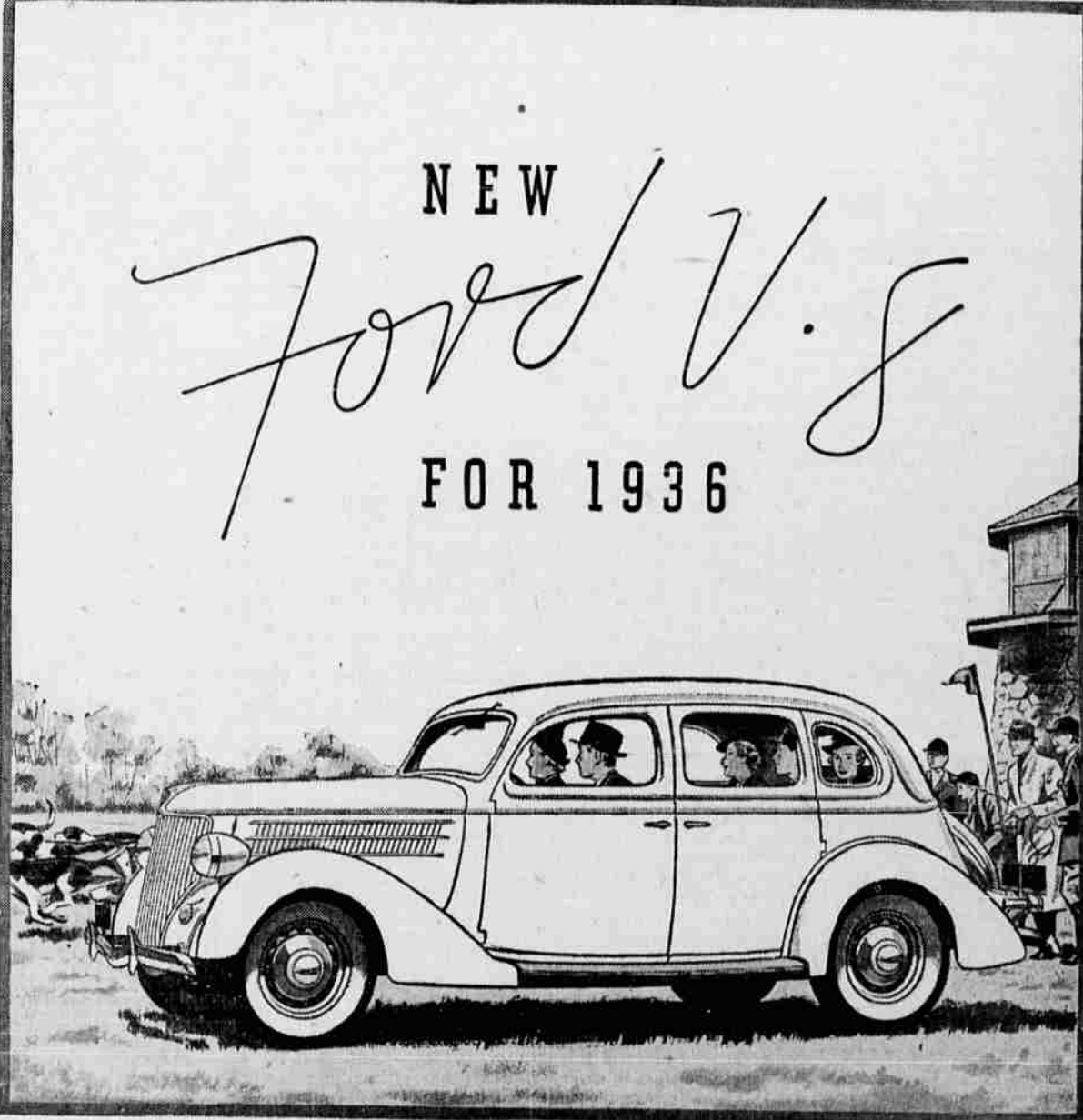
The New 1936 Chrysler 6 and Deluxe 8 with the famous Chrysler Overdrive NOW ON DISPLAY

WILL BE HERE SOON

THE EASIEST RIDING, ROOMIEST, FASTEST AND MOST ECONOMICAL LARGE CAR BUILT. Try all others and then Drive the Chrysler Airflow. It is still five years ahead of everything. The Famous Chrysler Airflow Overdrive will give you up to 18 miles per gallon.

LANGE MOTOR CO.

CHRYSLER 38 NORTH RIVERSIDE PLYMOUTH



THE EVIDENCE IS IN FAVOR OF THE V-8

EVERY ONE who drives a car has witnessed the outstanding performance of the Ford V-8. More than two million cars on the road have proved its reliability and economy. There is convincing testimony that V-8 stands for something distinctly better in power, acceleration, smoothness and motoring enjoyment.

The V-type engine is the modern engine and it is worth having in your 1936 car. It means a great deal to you . . . it is an important reason why the Ford is in a class by itself in value and satisfaction. There is no other low-price car like it.

Here is further evidence in favor of the fine-car quality of the Ford V-8. . . . It needs no breaking in. You can drive it 60 miles an hour the day you buy it. Unusual accuracy in the manufacture of moving parts insures better performance, greater operating economy, freedom from repairs and longer life.

You'll find the 1936 Ford V-8 a most unusual motor car—the finest, safest, most dependable Ford ever built.

FEATURES OF THE NEW FORD V-8

Distinctive Lines—Modern V-8 Engine—Genuine Steel Body—Super-Safety Brakes—Safety Glass Throughout at No Extra Cost—Center-Poise Riding—Big-Car Roominess.

\$510 and up F. O. B. Detroit. Standard accessory group, including bumpers and spare tire, extra. All Ford V-8 cars have Safety Glass throughout at an additional cost. Convenient, economical terms through the Authorized Ford Finance Plans of the Universal Credit Company.

FORD MOTOR COMPANY, BUILDER OF FORD, LINCOLN AND LINCOLN-ZEPHYR MOTOR CARS

See the New 1936 FORD Now On Display

C. E. GATES AUTO CO.

Sixth and Riverside YOUR FORD DEALER Phone 141