

AUTOMOTIVE NEWS

NEW CHRYSLER 6 AVERAGES 22 MI. ON GAL. OF GAS

The value of the Chrysler automatic overdrive was thoroughly demonstrated this week when a new 1936 Chrysler 6 sedan equipped with a gas meter, averaged 22 miles to a gallon of gas at a speed of 45 miles per hour, according to H. F. Lange of the Lange Motor Co., local Chrysler and Plymouth dealer.

Mr. Lange says, "The success of the Chrysler automatic overdrive in the Airflow line made it inevitable that Chrysler would eventually extend this feature to the lower-priced cars in the line.

"In effect, it is a fourth speed that automatically comes into operation when the car attains a predetermined speed of from 35 to 40 miles an hour, and throws the car into a lower gear ratio. The reduction in engine revolutions is as much as 30 percent to sustain a given car speed. The saving in fuel, oil and engine wear is obvious. In addition to the economy feature, the overdrive permits a quality of performance that cannot be approached without it. There is a smoothness due to the decreased engine revolutions that makes the ride seem akin to flying. With the overdrive in operation it requires only as many engine revolutions to sustain a speed of 65 miles an hour as are required for a speed of 45 miles an hour in conventional drive.

"Chrysler in addition to an improved performance of the 1936 line, has placed a definite accent on luxury. By luxury I do not mean gadgets, extravagances or ostentation. I mean the luxuries of superior performance, the luxury of longer, roomier, more sleek exteriors, the luxury of fine interior trim and equipment.

"I mention this as a single, obvious instance, but throughout all Chrysler cars which long ago were designed to give more than the bare necessities of transportation, you will find the same tendency to put the accent on luxury.

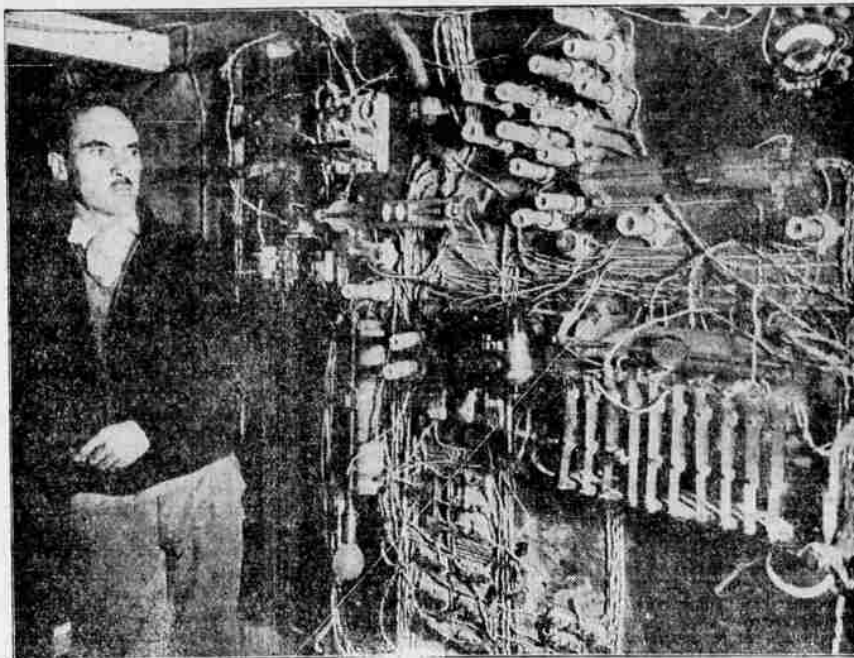
"Chrysler performance, always the pace-setter, has been greatly improved by the addition of numerous exclusive engineering features. Our low-priced models, through these betterments, now give a quality of ride that the public has long believed could be had only in very large and heavy cars. Handling ease has been increased, a feature that will appeal particularly to women drivers. A new type of body and frame construction increases safety.

"From the re-styled, more gracefully curved new radiator grille, back to the new built-in rear trunk, standard on all sedan models, blending smoothly into the rear panel, the flowing lines of the new Chrysler Six and DeLuxe Eight give the impression of reduced height and greater length. And the overall height is lower, and the bumper to bumper length is slightly longer. Yet the interiors of the scoured sedan bodies have been increased four inches in elbow room, while the height from floor to ceiling and the head room remain unchanged. A new footrest is skillfully recessed into the back of the front seat.

"In the driver's compartment, a full width cushion, with divided full seat back, either section of which tilts forward, replaces the bucket seat of the two-door sedan or touring brougham. A new arrangement of the speedometer and other instruments adds to the attractive appearance of the panel. Windshields are of the V-type, and sedan rear windows are divided."

ST. LOUIS, Nov. 30.—(AP)—Dr. Howard Hyde Russell, the 80-year-old founder and associate general superintendent of the anti-saloon league of America, is to be retired.

Union "76" and Triton Used in Mobile Laboratory



Dr. Carl Anderson, California Institute of Technology physicist, seen at work in interior of mobile laboratory which was transported to Pike's Peak from Pasadena, Calif., for research into the activity of the

cosmic ray on atoms and their compounds, electrons and nuclei, in rarified atmosphere and low temperatures. Included in the apparatus was an ingenious device which compelled the cosmic rays to take their

own photographs. Union Oil Company's "76" gasoline and Triton motor oil were used in operating the electro-generator set and other equipment required in making the more than 10,000 pictures taken on the expedition.

EXTENSIVE SERIES OF EVENTS MARKS PEAR WEEK HERE

A comprehensive educational program to mark the first annual community pear week beginning today has been prepared by the Rogue River Traffic association and Fruit Growers' league of Jackson County, Inc.

The week's local program includes displays at the Jackson County Chamber of Commerce and in numerous stores; showing of slides at the theaters; talks and exhibits at the senior and junior high schools, to be followed by essay contests for cash prizes; distribution of pear recipe and juvenile league books; featuring of pear items in domestic science departments of the senior and junior high schools.

Also the featuring of pears on hotel and restaurant menus; special offerings of pears in gift boxes at grocery stores; talks and displays at service and fraternal organizations.

The chamber of commerce display will demonstrate the work being done in the east by the Oregon-Washington pear bureau in advertising Medford pears.

BANK OF CALIFORNIA MANAGER IS PROMOTED
PORTLAND, Ore., Nov. 30.—(AP)—Herbert V. Alward, manager of the Portland branch of the Bank of California, was advised today of his promotion to a vice presidency in the bank's San Francisco headquarters. He will leave within two weeks. Frederick Greenwood, assistant Portland manager, will succeed Alward here.

Use Mail Tribune want ads.

M'NARY PREDICTS BONUS WILL PASS OVER FDR'S VETO

WASHINGTON, Nov. 30.—(AP)—Senator McNary of Oregon, Republican leader, predicted today that at the session of congress beginning in January a soldiers bonus bill will be enacted despite a presidential veto. McNary, who helped the senate to sustain last May President Roosevelt's disapproval of the Patman plan to pay the \$2,000,000,000 immediately with new currency, told questioners: "A bonus bill will pass this session over a presidential veto, in my opinion."

He did not say what kind of bill, but there have been other forecasts that any non-inflation bill would have the better chance.

As McNary made the statement, the Veterans of Foreign Wars requested their state and district chairmen to establish contact with senators and representatives to combat what they termed a "crafty campaign" to raise a "smoke screen" in opposition to the bonus.

The V. F. W., said "Selfish business interests and individuals in the administration and congress seek to convey the idea that bonus payment means increased taxation.

"The so-called bonus must not be jockeyed into any such controversial position," the V. F. W. said. "With approximately \$1,000,000,000 in gold and silver in reserve in the treasury and an unexpended balance of about \$4,000,000,000, there is no reason why the payment of this debt to the veterans should be linked with increased taxes."

Secretary Morgenthau recently said that as "far as I know" the White House remains unchanged in its opposition to immediate payment of the bonus.

Some observers here, studying a certain passage in President Roosevelt's speech at Atlanta yesterday, wondered whether the chief execu-

tive might not be looking ahead to possible enactment of the bonus, even over a presidential veto.

Mr. Roosevelt's failure to cite the \$2,000,000,000 stabilization fund as a government asset aroused speculation as to whether he might be earmarking this money for some specific purpose—such as eventual bonus payment.

Mrs. Ellis of Madras Leader State WCTU

PORTLAND, Ore., Nov. 30.—(AP)—Mrs. Rachel Ellis of Madras automatically succeeds the late Mrs. Ada Jolley of Portland as president of the Oregon Women's Christian Temperance union, officials here pointed out today.

Mrs. Ellis has re-elected vice-president and Mrs. Jolley president at the late state convention. Mrs. Jolley was fatally injured in an automobile accident near The Dalles November 23.

ACQUISITION SUB FARM LAND GAINS

PORTLAND, Ore., Nov. 30.—(AP)—Walter A. Duffy, regional resettlement administration director, announced today that federal acquisition of 208,000 acres of sub-marginal land in Oregon is progressing steadily.

The administration has taken 197 options at \$208,235. Funds allotted for the total purchase were \$935,529.

Options cover private and county owned land in the two conservation areas, one in Jefferson county and the other in the Oregon coast range.

"Restoration of these two projects to their primitive grazing or forest cover will bring about more beneficial use of the land through providing relief for approximately 280 families

struggling for subsistence on land that should never have been farmed," Duffy said.

Those who wish to continue farming will be given federal aid in relocating on productive land.

BE HAPPY, QUIET, OLD AGE RECIPE

PORTLAND, Ore., Nov. 30.—(AP)—Mrs. Ellen Felton, who celebrated her 102d birthday anniversary yesterday, said with a twinkle in her eye: "It's only after you pass your first century of living that you really begin to enjoy life."

Her only suggestion for longevity was, "Live a happy, fairly quiet life."

Use Mail Tribune want ads.

The New Chrysler 6

With the famous Chrysler Automatic Overdrive
Makes 22 Miles per gal. of Gas
at 45 Miles Per Hour

Drive this Remarkable New Economy Car and test your own gas mileage. Our demonstrators are each equipped with the new Kent Moore gas meter which enables you to test your gas mileage as you drive, at any speed.

Everyone is cordially invited to drive and test this new Chrysler

LANGE MOTOR CO.

CHRYSLER 33 NORTH RIVERSIDE PLYMOUTH

Automobile Cost Per Horse Power Greatly Reduced

By United Press
As a sales booster the Automobile Manufacturers' association states the buyer with the information that the cost of cars—per horsepower—has been reduced 75 per cent in 10 years.

It was only as far back as 1925 that the purchaser paid \$31.50 per horsepower for his vehicle, while today's price of a "hoop" is \$7.60. Measuring cost by the pound, the association said that today's cost is 23 cents compared to 41 cents in 1925, a decrease of 44 per cent. Buying a machine "by the inch" you save 39 per cent, the cost declining from \$9.50 ten years ago to \$5.90 today.

KILT BY GIRL IS SUICIDE MOTIVE

KELSO, Wash., Nov. 30.—(AP)—Disappointed in his efforts to win the affections of a girl whom he had followed here from Greeley, Colo., J. D. Hammond, 36, shot and fatally wounded himself last night in the home of the girl's parents.

Hammond, a former deputy sheriff in Greeley, threatened to kill Mrs. Viola Koehler, 23, also a former Greeley resident, and then end his own life when she refused to accompany him back to Colorado. The girl and her mother, Mrs. Leslie Clawson, at whose home the shooting occurred, fled to the street when he produced a pistol. As they reached the front yard, they heard a single shot. Police, summoned by neighbors, found Hammond on the floor, unconscious.

He died in a hospital three hours later. In his pockets officers found a note which said: "I am going to end it. Please notify my brother and have him write my kids and comfort them."

LOW DEMAND HITS EGG MART PRICE

PORTLAND, Ore., Nov. 30.—(AP)—Decreasing demand for eggs considering the season appeared more to blame for the present weakness in the price than the actual increase in fresh supply.

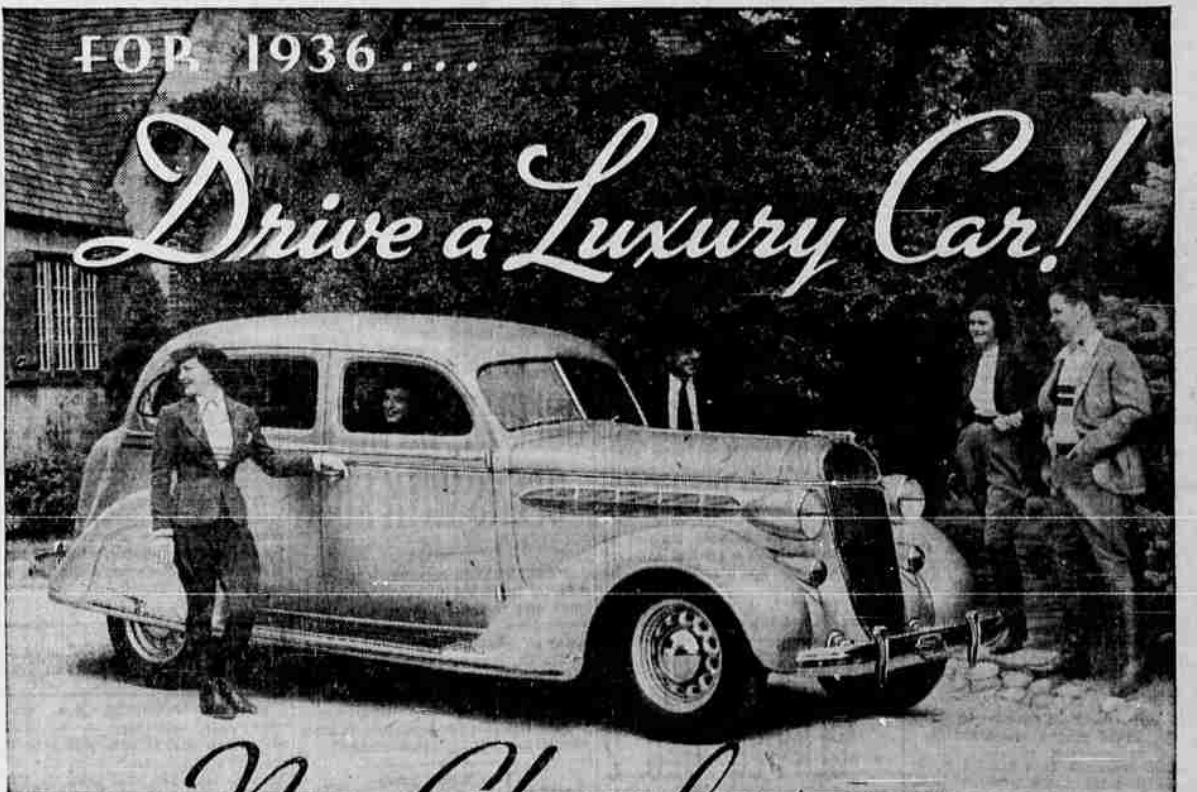
There was no change in butter or butterfat quotations. Consumption of butter continued to decrease with advancing prices. Make also showed a decrease.

Demand for chickens showed a mixed tone. In some quarters there was decided weakness suggested as a result of the carryover but in other quarters bids were being maintained.

CLOSE GUESS BY JERSEY PRODIGY

NEW YORK, Nov. 30.—(AP)—Jackie Merkle, 7-year old New Jersey boy credited by some with having psychic powers, predicted this score for today's football game at New Haven:

Princeton 27, Yale 9. Earlier this week Jackie gave correctly municipal budget figures at city hall after they were written on a paper in another room. Other such feats have impressed many persons.



BRILLIANT **New Chryslers** START AT **\$760***
and Up, List at Factory

THIS YEAR, drive a big car! Step into the luxury class with a 1936 Chrysler... and still keep your budget happy!

You can buy a big new Chrysler Six for just a little more than the price of lowest-priced cars. You can drive this big luxury car at a cost as low, and in many cases lower, than smaller cars.

You get big-car comfort and roominess. Big-car riding ease from big tires and big, soft-acting springs. Big-car power, speed and pick-up. Big-car steadiness on the road.

Through the miracle of Automatic Overdrive, available on the Six at slight extra cost, you actually get from 3 to 5 more miles from every gallon of gasoline at all touring speeds.

New De Luxe Eight
If you like action... be sure to drive the 1936 Chrysler De Luxe Eight. Fast and nimble, velvety-smooth... this brilliant new Chrysler handles like a small car, but rides with all the solid comfort of 121 and 133-inch wheelbases. Typical of two thousand dollar cars in smartness and appointments, it is priced surprisingly enough in the thousand dollar range.

New Chrysler Airflows... the world's most modern travel
For 1936 Chrysler presents two beautiful new Airflows... the Airflow Eight and

Ask for the New Official Chrysler Motors Commercial Credit Company **6% TIME PAYMENT PLAN**

You can figure it out for yourself.
1. Start with your unpaid balance.
2. Then add insurance cost... at conference rates.
3. Then multiply by 6%—for 12 months' plan. One-half of one per cent per month for periods more or less than 12 months.

In some states a small legal documentary fee is required. NO OTHER CHARGES

Airflow Imperial. Here you find the spaciousness only Airflow design makes possible... great wide doors... divan-like seats... real comfort for six grown people. Here is Floating Ride at its finest, for only Airflow design permits the fullest advantage of new weight distribution. Here, too, is the greatest safety on the



road... you ride inside the strong steel girders of the car frame.

Automatic Overdrive is standard on the Airflow Imperial. It is available on any 1936 Chrysler at small extra cost. All the 1936 Chryslers have strong, rigid safety-steel bodies... famous Floating Power... time-tested hydraulic brakes... integral body-form trunks on Sedans.

See and drive the Chryslers for 1936. Then ask yourself this question: With Chrysler offering so much luxury... for so little more than the cost of just plain transportation... isn't it sensible now for me to own a Chrysler?

*1936 CHRYSLER SIX... 93 horsepower, 118-inch wheelbase. Six body types. Prices \$760 and up. Four-Door Sedan \$875.

*NEW CHRYSLER DE LUXE EIGHT... 105 and 110 horsepower, 121 and 133-inch wheelbase. Seven body types. Prices \$925 and up. Four-Door Sedan \$1045.

*CHRYSLER AIRFLOW EIGHT... 115 horsepower, 123-inch wheelbase. Six-passenger Sedan and six-passenger Coupe \$1345.

*CHRYSLER AIRFLOW IMPERIAL... 110 horsepower, 128-inch wheelbase. Six-passenger Sedan and six-passenger Coupe \$1475.

*All prices list at factory. Detroit; special equipment extra.

See the cars—The 1936 Chryslers are on display at Chrysler dealer showrooms.

CHRYSLER AND PLYMOUTH DEALERS
LANGE MOTOR CO. PHONE 18

Look! Look! Look!

25 Gallons Gas FREE

with every

USED CAR

Sold This Week

OUR PRICES ARE RIGHT

Liberal Terms

WALTER W. ABBEY, Inc.

NASH AND LAFAYETTE DEALERS

123 South Riverside Phone 303

USE OUR BUDGET PLAN TO BUY Tires, Batteries, Accessories for Your Car

6 Months to Pay

Now you can buy those new tires — batteries or whatever you may need for your car on our convenient budget plan. 6 months to pay — 50c per month carrying charge — no delay — arranged right at the time the purchase is made—

LUBRICATION SPECIAL

All This Week

Spark Plugs cleaned and adjusted
Battery Terminals cleaned
Battery tested
Tires tested and properly inflated
Car vacuumed inside
Glass cleaned
Body bolts tightened

\$1

MARFAK LUBRICATION

\$2⁶⁵ Value SPECIAL \$1⁰⁰

HOPKINS SERVICE STATION

Riverside at Jackson. Phone 899