

AUTOMOTIVE NEWS

AUTO CLUB PLANS BAN MEMBERS FOR LAW VIOLATIONS

WASHINGTON, D. C., Nov. 30.—In the interest of public safety, the American Automobile Association has recommended that all of its 500 affiliated motor clubs and state associations throughout the United States close their membership rolls to motorists convicted of serious violations of driving rules.

The policy of the national motoring body was contained in a resolution adopted last week at the A. A. A. national convention in Chicago. The resolution reads as follows:

"State associations and A. A. A. clubs are urged to give serious consideration to the adoption of a policy whereby membership in their organization would be closed to persons whose licenses have been revoked, to persons convicted of drunken driving, leaving the scene of accident, and to those guilty of other major violations having direct and important relationship to public safety."

"Action by local affiliated clubs will be necessary before the policy becomes binding," said Thos. P. Henry of Detroit, Mich., president of the A. A. A. "I believe, however, that it will be endorsed by the great majority of our clubs and state associations. Our membership is on the whole composed of the more responsible and civic minded type of car owner and I have no doubt that they will welcome any move to separate the A. A. A. emblem entirely from recklessness in car operation in any manner, shape or form."

Other features of the A. A. A. safety program to be launched on the basis of convention action include:

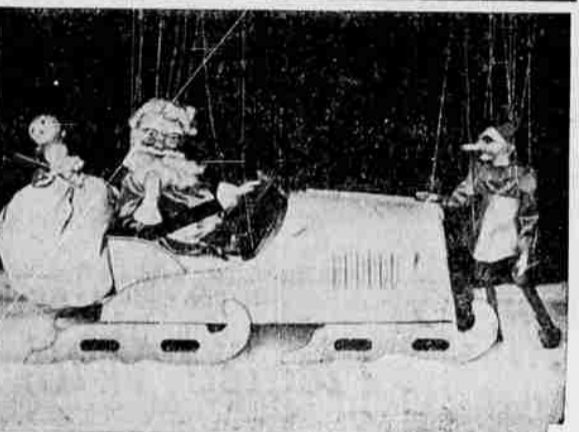
1. Safety work of a continuing nature as against temporary drives and campaigns.
2. Strict, vigorous and insistent enforcement; elimination of ticket fixing; simplification of court procedure; increase in highway patrol and other enforcement personnel; increased use of suspension and revocation of drivers' licenses.
3. Staunch support of school safety patrol; increased emphasis on the safety education of children; traffic and driving training for high schools, normal schools and teachers' colleges, and systematic education of adult motorists and pedestrians.
4. Continued aggressive effort for adoption of A. A. A. safety-responsibility law; effective state drivers' license law and other uniform safety regulations throughout all the states.
5. Application of sound engineering to highway design and traffic control; such as widening of highways, eliminating of grade crossings, separation of highway grades, use of pedestrian islands and construction of divided highways, elevated highways and highway sidewalks where warranted.

YOUTH AND BEAUTY



"Won't you come along with me?" says the smile in the picture, "and we'll tour the town properly in Ford's swank roadster for 1936." Youthful, fast, sturdy, easy to handle—the Ford roadster is just what the college boy or girl has in mind for dashing about the campus.

SANTA TO GIVE SHOW HERE



Puppets are coming to town—a traveling puppet show just like those which knights and their ladies watched in castle courtyards in the middle ages. This rare and amusing spectacle will be here December 7 to give a number of performances. It is the first show of this kind ever to travel Pacific coast highways by motor truck in modern times and revives for today's audience the oldest known form of theatrical entertainment.

Fred Johnson, local manager for Shell Oil company, announces that all performances of the puppets will be free, part of Shell's Christmas carnival which has become one of the west's big annual holiday events. He will give full details later as to where and when this novel attraction will be on view. Everyone is cordially invited to be present and enjoy an event the like of which

1-MINUTE SAFETY TALKS

By Don Herold



A minute ago we were a couple of human beings - but now we are just a couple of this year's automobile accident statistics

DON'T BE A STATISTIC

Don't be just a fool number. When the totals of this year's automobile injuries and deaths are added up next January 1, don't be one of some 36,000 killed and a million injured by automobiles.

Smart people look figures in the face and try to learn how to avoid becoming one.

Others not so smart ignore figures and yield to Nature's soothing illusion that nothing can happen to THEM. Nature kids us all with a false sense of security. Nature doesn't care what happens to us as individuals. But WE DO.

If we read that nearly 16,000 persons were killed or injured walking on country roads in 1934, we can be surer of staying out of that class by walking on the left side when we walk on country roads, facing traffic.

If we read that there are more than

three times as many accidents during the evening rush hours as there are during the morning rush hours, we can drive more than THREE TIMES AS CAREFULLY in the evening as we do in the morning.

Smart people use last year's statistics as a guide to this year's conduct. What do you learn from the following: Number of accidents: from exceeding speed limit, 123,980; driving on wrong side of road, 92,570; driving off road, 60,590; reckless driving, 53,290; pedestrians crossing between intersections, 72,070; coming from behind parked car, 36,060; crossing against a signal, 32,960?

By watching statistics gathered by such authorities as The Travelers Insurance Company, we can improve on Nature and stay out of trouble spots and avoid dangerous driving and walking habits.

JACKSONVILLE HEALTH HELPERS MEET DEC. 3

JACKSONVILLE, Nov. 30.—(Sp)—Jacksonville helpers of the county health unit will meet at the home of Mrs. H. K. Hanna here on Tuesday, December 3. A covered dish luncheon will be enjoyed at 12:30. A cordial

invitation is extended for all those interested in health work to attend.

Lake Sailing Popular

PORTLAND, Ore., Nov. 30.—(AP)—Forest officials here said sail-boating was growing rapidly in popularity in mile-high Elk lake in the Deschutes national forest. Eight boats and one sailing canoe were used there this

season, they said. More than 80,000 campers visited the Deschutes national forest in 1935.

Ship in Distress

NEW BEDFORD, Mass., Nov. 30.—(AP)—Leaking badly, the freighter Rigel beached under her own power about 25 feet off the state pier today.

PORTLAND ROWDY AND GIRL GUILTY

PORTLAND, Ore., Nov. 30.—(AP)—A jury in circuit court convicted Nick DePinto and Gertrude Hart of assault with a dangerous weapon in connection with the beat-up of N. A. Brotherton, 37, a bartender. Sentence is to be pronounced Monday. Judge James Crawford dismissed a similar indictment against Dominic Chimenti.

Hohlweg Top Shop In New Location

The Hohlweg Top Shop, which was opened in the Brill Metal Works in October, has been moved to the corner of Eighth and Bartlett streets to gain more room for an increasing business, according to Frank Hohlweg, owner.

Mr. Hohlweg says: "The new daylight shop will enable me to give the type of service which the people of the Rogue River valley have a right to expect. I am now representative of one of the largest tent and awning companies in Oregon and I am prepared to give the same high class service in the awning line. Every job receives my personal attention. I wish to thank my many friends for their support and I assure them they will receive even better service at the new location."

Sell Old Walnut Tree
WOODBURN, Ore., Nov. 30.—(AP)—A 63-year-old black walnut tree planted in 1872 near the home of Robert and Hannah Whitney, Marion county pioneers, will be shipped to Japan as lumber. The tree was sold to the Hockett Lumber company.

Snow at The Dalles
THE DALLES, Ore., Nov. 30.—(AP)—A light snow fell over the mid-Columbia grain area today. The fall was heavier in the mountains.

SAME OLD STORY AT THE CROSSING

EUGENE, Nov. 30.—(AP)—Mrs. Bessie Sutcliffe, 65, and Mrs. C. E. Miller, 41, both of Cottage Grove, were gravely injured here late yesterday afternoon when their car was struck by a train at the Alder and Broadway street crossing.

The car, outbound from Eugene on Broadway, was proceeding at an estimated speed of 20 miles an hour as it approached the tracks after emerging from a traffic jam at the Alder intersection, a few yards west of the Broadway crossing. The train was estimated to have been traveling at the same speed.

Use Mail Tribune want ads.

NEW LEGION HOME FINE FOR MEETING

Medford Post No. 15 American Legion held its regular meeting Nov. 26, in the nature of a housewarming at its new quarters in the K. P. hall.

The Auxiliary joined with the Legion in a covered dish supper after which they enjoyed cards while the Legion meeting was in progress. Dancing and cards formed entertainment for remainder of the evening. The new quarters are extremely pleasant and the party was so well enjoyed that the Legion promises another in the near future.

Next meeting of the Legion will be Tuesday, December 10, a short business meeting and a good "stag" party.

Post officers ask members to note the change of meeting nights, now the second and fourth Tuesday instead of Mondays.

Strip Redemption Vote

PORTLAND, Ore., Nov. 30.—(AP)—Portland voters will decide January 21 whether the city is to levy a \$28,000 tax to redeem its strip.

Auto Production Will Set Record During November

By United Press.
Automobile production is running at capacity and no slowdown is looked for until after the first of the year, when it probably will slow up until the heavy spring demand begins. Delivery of new automobiles this month should approach the 300,000 mark. According to present indications it will be a record for November more than doubling last November's registration of 136,000 units. However, manufacturers point out that even this will not be a true gauge of demand, because limited field stocks are curtailing registration sharply, and that it will be the end of December or January before they catch up with orders.

Brill Metal Wks. Inc

General Sheet Metal and Steel Fabrication
Heating—Oil Burners
109 E. 5th Tel. 418

RENEW FIGHT LET ALIEN BAER STAY

SALEM, Nov. 30.—(AP)—Governor Charles H. Martin returned to his offices here today after spending several days in Bremerton, Wash., visiting his daughter and family.

The governor, upon noting the deportation of Walter E. Baer had been stayed 30 days upon orders of the department of labor, said he would have nothing to say on the matter.

The governor has consistently refused to give an executive pardon to the Portland foreigner, and his deportation is mandatory unless the pardon is granted by the governor.

Washington dispatches stated Senator Charles L. McNary interceded for Baer, who now is at Ellis Island.

FIND LADY DEAD; COMPANION GONE

PORTLAND, Ore., Nov. 30.—(AP)—A woman about 30 years old, who gave a Tacoma address, was found shot to death in her hotel room here today.

A few minutes before the body was discovered a man who had registered as her husband left the hotel after telling the clerk he would return "in a few minutes."

The two had registered as "Mr. and Mrs. Fred Rot" of Tacoma. The woman's body, fully clothed, was found in bed. An empty .32 caliber revolver cartridge was on the floor. Several partly filled whiskey bottles were in the room, and a bloody towel was found on a rack.

Attention! Used Car Buyers!

EVERY O K TAG USED CAR SOLD IN DECEMBER WILL BE EQUIPPED With FREE HEATER!

Prices Drastically Reduced in Year End Stock Clean-up. We must clear the floor for record sales in 1936.

Rogue River Chevrolet Inc.

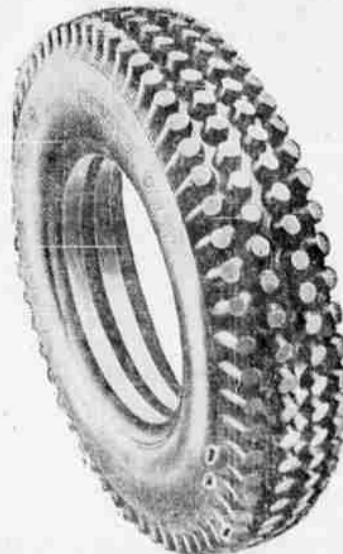
32 NORTH RIVERSIDE AVE.



1. Where other tires bog and sink in!
2. Where other tires spin without traction!
3. WARDS POWER GRIPS take you through easily!

Get America's Best Extra Traction Tire WARDS POWER GRIPS

With the tread like "built in" skid chains! Sure Gripping! Self Cleaning! Non-Packing!



• "Bad road" drivers everywhere, are using Wards Power Grips! They know that Power Grips' patented round knobs, tapered, from the base give more traction—are more self-cleaning—than other "extra" traction tires! They know that Power Grips save the cost and trouble of chains yet get them through going impassable to other cars—even with chains! Built with the same rugged strength and dependability of First Quality Riversides, and backed by the same "No-Limit" guarantee!

730

4.40-21	4 ply	
4.50-21	4 ply	
4.75-21	4 ply	
4.40-21	4PLY	\$ 7.30
4.50-21	4PLY	7.30
4.75-21	4PLY	7.30
4.75-21	4PLY	7.45
4.75-19	4PLY	7.75
5.00-19	4PLY	7.75
5.25-18	4PLY	9.80
5.25-21	4PLY	10.15
5.50-17	4PLY	9.50
6.00-17	4PLY	11.60
6.00-17	4PLY	14.65

Convenient Terms May be Arranged!

MONTGOMERY WARD

117 SOUTH CENTRAL TELEPHONE 286