

AUTOMOTIVE NEWS

NEW AUTO MODELS BRIGHTER, SLEEKER MORE STREAMLINE

Associated Press Staff Writer
NEW YORK, Nov. 2.——Sleeker, brighter and more streamline motor cars were presented to the public today at the 36th annual national automobile show.

Nearly 300 cars and chassis are on display at Grand Central palace, all showing new advances in automobile engineering and design.

The new models generally appear longer and low-slung, with re-styled fronts and rears to provide even less wind resistance than heretofore. Streamlined trucks and trailers also are in evidence.

Along with the glittering new cars are scores of motor accessories. A half dozen models in a soft gold finish.

Among the passenger cars, there are 25 domestic makes and five foreign cars on display.

The show, which is being sponsored by the Automobile Manufacturers' association after a lapse of many years, is being held in November instead of January for the first time in 34 years. This is in line with the manufacturers' new policy of advancing their new models to eliminate a seasonal slack.

NEW FARM CHORE PASTING POTATO STAMP ON SACKS

WASHINGTON, Nov. 2.— (AP)—There'll be a new chore around the farm next season—pasting stamps on potato sacks.

One kind of stamp will show that a tax of three-fourths of a cent a pound of spuds has been paid to Uncle Sam.

Another kind will show that no tax has been paid.

There is a little chance, however, potato stamps will become as familiar to Americans as the stamp on a pack of cigarettes. Grocers probably will rip them off the sacks before they weigh out five and ten-pound packages.

The internal revenue bureau was ready today to start the presses on the government's newest stamp, one to show that a farmer exceeded his potato allotment and had to pay a tax.

The farm administration will distribute the tax exempt stamps, to show that the farmer is marketing potatoes within his allotment. These stamps won't cost him anything.

The internal revenue stamp will display a pretty girl's picture. It will be about the size of a special delivery stamp and be printed in several colors and denominations.

Many farmers selling in excess of their individual allotments may not have to buy stamps—which will be on sale at the postoffices—because the new potato control law provides for the exchange of tax exempt stamps among growers who exceed their allotment and those who do not sell as much as their quotas.

Both the tax stamp and the tax exempt stamp must be destroyed by the person who empties the container of first sale.

DYNAMITE ADRIFT ON SAN FRANCISCO PERILS SHIPPING

SAN FRANCISCO, Nov. 2.— (AP)—Braving the dying fury of a heavy wind storm, a small army of searchers in tiny rowboats early today combed the waters of San Francisco bay for 800 cases of dynamite that had swept overboard from a drifting barge during the night.

The dynamite was washed from the deck of the barge Adella in a section of the bay about two miles south of the main ferry and shipping lanes.

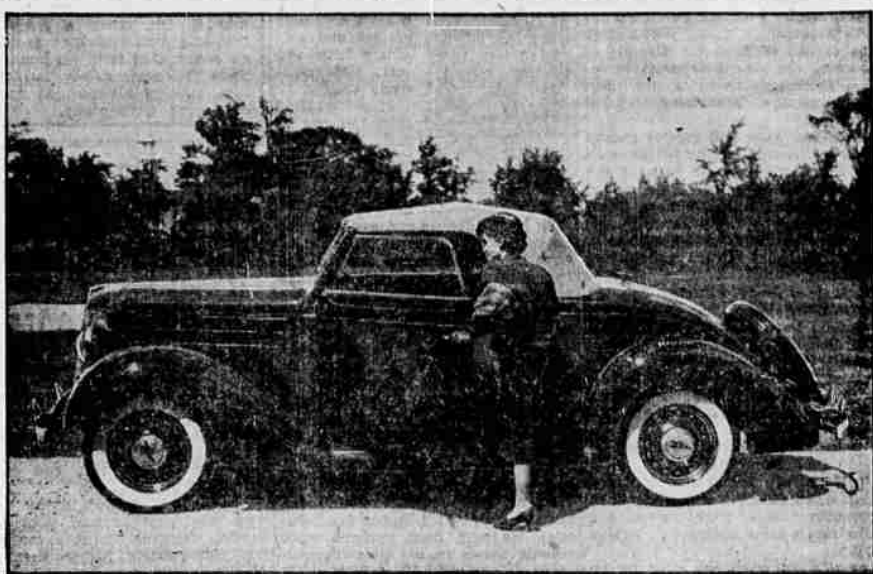
Although the freighter Condor, the vessel on which the dynamite was to have been loaded, broadcast a warning to all craft to keep away, powder company officials said that there was little danger. They declared most of the wooden cases probably would become water logged and sink and that in any event the dynamite would not explode without detonating caps.

The barge had been towed alongside the Condor, anchored in the bay off Mission Rock, last night and 11 stevedores had started to transfer the explosive to the ship when the wind suddenly roared out of the north, reaching a velocity at times of 86 miles an hour.

Before the men working on the barge could clamber aboard the Condor, the barge's anchors jerked loose and it drifted away.

Soviet Repels Raiders
MOSCOW, Nov. 2.— (AP)—A raid across the border from Manchoukai to cut the railroad line to Vladivostok failed when a Soviet border patrol fought the raiders, killing two and wounding three, officials Russian state from Kharabarovsk said today.

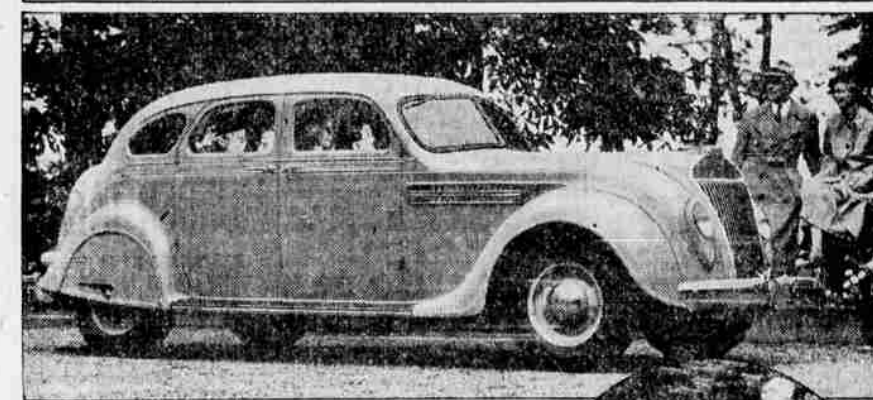
The Personal Car at Its Smartest



EXPRESSIONS the spirit of youth in every line is this 1936 Ford V-8 Convertible Cabriolet. Advantages of the open and closed body are combined. The smartly tailored tan top gives added grace to the low sweeping lines, and is easy to lower, folding neatly into a recessed compartment flush with the body.

There is a parcel shelf behind the seat, big enough for a golf bag. The wide seat, in genuine leather or Bedford cord, accommodates three comfortably. The back of the seat swings up to give access from the inside to the rear deck for luggage—a new feature. A rumble seat is standard equipment.

Many New Features In 1936 Chryslers



The Chrysler Airflow Eight Sedan. This car on a wheelbase of 123 inches, seats six passengers. The horsepower is 115 with a 6.2 to 1 compression ratio and 120 with 6.5 to 1 compression ratio.



Interior of the Chrysler Airflow Eight Coupe. This car seats six persons in perfect comfort.



Built-in trunks are standard equipment on all 1936 Chrysler sedan models. The trunk blends gracefully with the rear-end design.



The Chrysler Six Four Door Sedan. This car is built on a chassis of 118 inch wheelbase. Its engine develops 93 horsepower with standard compression ratio and 100 horsepower with special aluminum head and 6.5 to 1 compression ratio.

CROPS HARD HIT SOUTHERN IDAHO

BOISE, Idaho, Nov. 2.— (AP)—Winter rode in record-breaking fashion over southern Idaho today, ruining crops, cutting communication and transportation facilities.

The amount of damage done to unharvested potato, apple, lettuce and celery crops was heavy. Plane service was halted, telephones and telegraph lines were broken and motor traffic was impeded by a storm that piled up snow to a depth not equaled this early in this region for 40 years.

The storm was expected to continue throughout the southern part of the state tonight and tomorrow, said H. G. Carter, meteorologist for the weather bureau. More than four inches of snow fell on Boise in 24 hours.

There's no way of telling what damage was done to potatoes, in terms of money, until after digging is resumed," said F. Lee Johnson, director of agriculture.

Egg Price Unchanged
PORTLAND, Nov. 2.— (AP)—There was no change in egg values for the week-end but more or less softness was suggested in offerings of cold storage goods.

Phone 240. We'll haul away your treasure. City Sanitary Service.

10 MINUTES!
THAT'S ALL!

Take a "10 minute ride" in a 1936 Pontiac—that's all this car needs to win your heart! This marvelous car is more beautiful than ever... it has no less than 101 fine car features, including all that's best of all that's new... and it's built to last 100,000 miles! See it... drive it... you'll want to buy it!

See the **1936 PONTIACS** NOW ON DISPLAY AT **Skinner's Garage**

143 S. Riverside, Tel. 102

MARAUDING BEARS LOOT COMMISSARY AT CRATER LODGE

CRATER LAKE NATIONAL PARK, Ore. Nov. 2.— (Special)—Crater Lake bears must be believers in the Halloween spirit. Mr. and Mrs. C. S. Richardson, custodians of the Crater Lake lodge, declared yesterday upon discovering that bears had broken into the commissary and had effectively damaged a large supply of foodstuffs in storage for winter use.

For 14 years food had been safely stored in a lower floor location of the large building and bears had never been noticed to notice a small opening

through which supplies were placed in the storage room. It was believed that a stone placed in front of the opening would prevent the entrance of marauding bears, especially troublesome with the arrival of the first autumn snow.

Through an opening so small, perhaps hardly more than a foot in diameter, bears crowded themselves into the room and immediately began an onslaught on the supplies of eggs, bacon, ham, oranges, lemons, potatoes and other edibles. These materials were liberally mixed together on the floor, a total loss.

Less than three weeks ago, bears raided the house tent of G. F. Whitworth, assistant park engineer in charge of CCC activities, at Park Headquarters, and made a shambles of the kitchen. This week a 400-pound bear broke a rear window of a sedan, climbed through the small opening and made himself at home on the back seat until he was discovered. The car was sitting near the administration building.

WARNS RADIO CHANGE ADVERTISING METHODS

NEW YORK, Nov. 2.— (AP)—George Henry Payne, federal communications commissioner, warned commercial broadcasters today they would have to improve their programs and change their advertising methods if they wanted to maintain their present system of privately-owned radio stations.

Goodrich Offers Easy Budget Plan

Every winter many people are killed and injured by skidding on slippery roads. Many of these are the result of trying to get by this dangerous period with smooth, worn tires, according to Jack Anstey, credit manager for the Lewis Super Service Station.

Mr. Anstey says: "Besides offering a super safe tread, Goodrich Safety Silvertowns are three times safer from high speed blowouts and they give months more mileage at no extra cost. Silvertowns are made with the amazing life saver golden ply, which prevents trouble before it starts."

"The Goodrich original budget pay plan makes it possible for everyone to purchase winter needs, such as Goodrich tires, tubes, Electro-Pak batteries, auto heaters and radios on easy, convenient terms."

Use Mail Tribune want ads.

NEW FORD V-8 FOR 1936

The New Ford V-8 Is A Thoroughly Modern Car

Everything about the New Ford V-8 for 1936 is in tune with today—and tomorrow. . . . For the Ford is up-to-date in performance, as well as appearance, comfort and safety. . . . The Ford V-8 engine remains the newest engine in the low-price field—a long step ahead in power, acceleration, smoothness and motoring enjoyment. . . . Fine-car design means fine-car performance. . . . There are good reasons for these words of advice to the wise buyer. . . . "Make it a V-8 for 1936."

\$510 UP F.O.B. Detroit

Standard accessory group, including bumper and spare tire, extra. All Ford V-8 body types have Safety Glass throughout at no additional cost. Economical terms through the Authorized Ford Finance Plans of the Universal Credit Co.

See the New 1936 FORD Now On Display

C. E. GATES AUTO CO.

Sixth and Riverside YOUR FORD DEALER Phone 141