

# SHELL STANDARD OF WEST AFRICA BESET BY RAIDS

PARIS (UP)—A new monetary movement to force Lobi, French possession in West Equatorial Africa, off the shell standard is underway, according to a dispatch received from GAOUSA, commercial capital of that region.

Following the footsteps of the United States, Great Britain and Belgium in abandoning the gold standard, export merchants, speculators and exchange agents have started attacking the cowry, the highly polished, thick, small-like shell that is used as native money from Timbuctoo to the Gulf of Benin and throughout the whole basin of the Niger-Benue.

**Collection Complicated**

The movement is said to have the support of French authorities as the use of shell currency complicates the collection of taxes, which are estimated for GAOUSA, alone, at 750,000 francs annually or at an average rate of exchange, 500,000,000 cowries. The cowry fluctuates between 12 to 24 cowries per sou.

With the increase of international trade in this far-off possession, many merchants are beginning to realize the need of a more international money and are attempting to convince the natives that metallic and paper shells are just as good as prettier shells even if they cannot be worn on strings about the neck for ornament or charms.

**Wide Fluctuation**

In this connection, monetary experts point out that the shell standard of Lobi is in a constant state of fluctuation as it is compelled to change in relation to the demand for French money during those periods when taxes must be paid or foreign bills met with French currency. It is also influenced by gold production in the region.

Despite this movement, however, the natives persist in buying and selling on the basis of these shells which come from the Maldivic Islands and are difficult to obtain in Lobi, an island territory wedged between the Gold and Ivory coasts. Partisans of the shell standard emphasize that owing to the scarcity of shells in Lobi it is almost impossible to have inflation if only cowries are used as the accepted unit of exchange.

**Dislike French Francs**

The dispatch states that although French money is often used in the market place at GAOUSA, the natives immediately change the francs they receive into cowries at one of the several booths of franc and shell exchange agents before going home. Owing to the cheap primitive purchases of the natives, even the French merchants are forced to accept shells as change for kous.

The movement is being vigorously opposed by native millionaires—in terms of shells—as the shell standard would wipe out their fortunes. They have a tremendous influence on the natives in general and are given active support of cowry hoarders.

# RATS ARE RATED HIGH IN BRAINS

PARIS (UP)—If rats could be given intelligence tests they would rate higher than the average man, the director of the Museum of Natural History at Le Havre believes.

"Rats outwit man at every turn," declared Dr. Adrian Lohr, "and ordinary human efforts to destroy them only increase the breed. The best trapping methods merely encourage polygamous habits, since traps catch the males that roam while the females stay with the young."

Cats are the best means of combating rats, Dr. Lohr believes.

# WOMAN, 102, LOSES INTEREST IN LIFE

MUSCATINE, Iowa (UP)—Mrs. Julia Flesia, 102, asserts that she is weary of life and is anxiously awaiting death.

The white-haired woman, her eyes dim after a century span in which she has never worn glasses, voluntarily spends most of her time in bed. She reads, sews and converses brightly if she can find someone to speak to her in the French language.

She was born in France and came to New York at the age of 18 years. After her marriage in St. Louis, she moved to an Iowa truck farm with her husband.

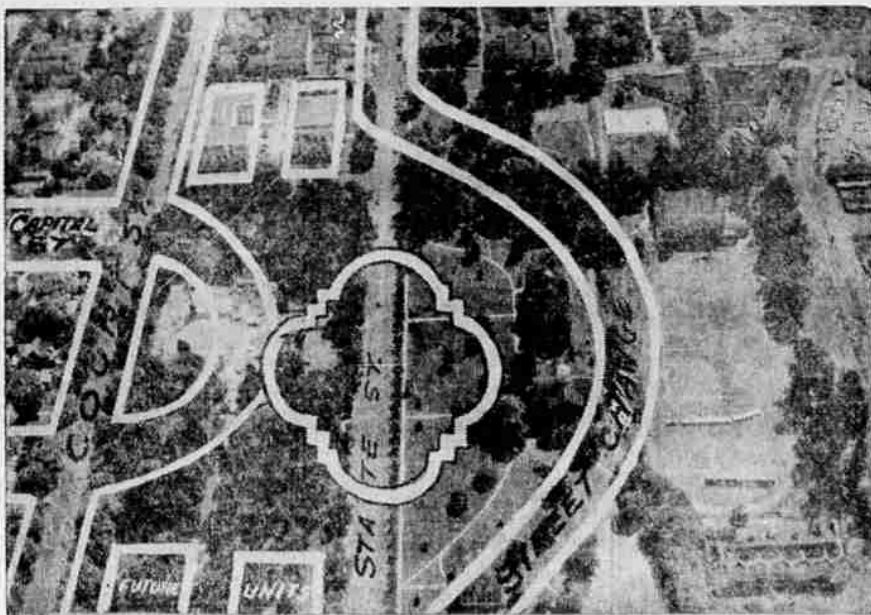
# VICIOUS ORANG-UTAN IS IRKED BY PUBLIC

CHICAGO (UP)—Barney, the laziest of his kind in captivity, is sad but vicious orang-utan. He is sad, according to Floyd S. Young, director of the Lincoln park zoological gardens, because he is charged with being Public Enemy No. 1 in the zoo. He is vicious and that's why he spends so much time in solitary.

Unlike his fellow orangs, Barney does not like his public. People make him nervous and infuriate him. Then he goes into fits of temperment.

Purchased by the park zoo in 1927 when he was two years old, his estimated weight is 175 pounds. He is considered one of the finest specimens in captivity.

# AIR VIEW OF PROPOSED WILLAMETTE CAPITOL SITE



This photo, with artist's touches, shows one of several architects' plans for Oregon's new capitol. The site is a combination of the present capitol grounds, the Willamette university campus and a part of Willson park. At the top between Court and State streets are the supreme court and state office buildings. The white space in left-center is the present capitol grounds on which the burned state-house stood. The squares at the bottom show locations of future units to balance with state buildings shown at top. To the right of State street is present Willamette campus with Sweetland field at extreme right. This artist's plan is to re-locate State street, build the capitol on the site of the present university administration building and transform the present capitol grounds into a sunken garden. The area comprising the portion of Willson Park and the Willamette campus is sufficient for all future state building needs. This roomy site makes possible construction of a type of capitol, whose savings, in comparison with cost of a skyscraper style of structure on the present tiny capitol site, will pay a large part, if not all, of the state's share of the Willamette site.

LENINGRAD (UP)—An arctic expedition of the Academy of History of Material Culture has left for the Kola Peninsula, in quest of monuments of the paleolithic period in the Arctic.

Grandmother Thrice at 35 BUCHANAN, Mich. (UP)—Mrs. John Slocum is three a grandmother at 35. She first became a grandmother in 1932. Mrs. Slocum was married at 15, as was her daughter.

TOLEDO (UP)—Mrs. Lillian Brocklebank, a former employee of the Second National Bank, was awarded \$500 she found more than 14 years ago on the floor of the safety deposit vault by the court of appeals.

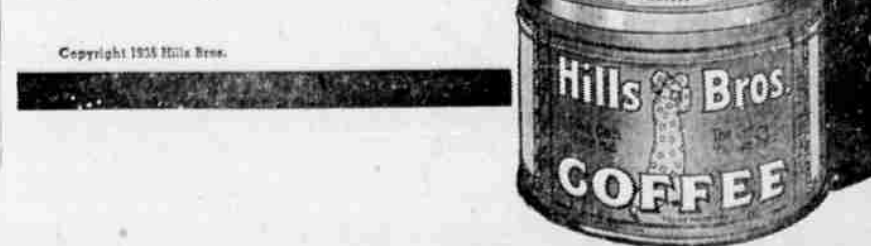
# MISSING MOMENTS



FACING a cup of coffee that has something missing in flavor, day after day, is a predicament that too many people are experiencing.

Perhaps you are enduring this situation and wondering why the coffee you use never seems to taste right, regardless of your care in making it. Nothing can take the place of flavor in coffee.

When your coffee turns up in the cup with something missing in flavor, it is because something was overlooked in the blend, or the roast, or the grind, or the pack, or all four. And since all the care you take in making the coffee won't correct the trouble, the thing to do is change to Hills Bros. Coffee. It is a never-changing BLEND of the finest coffees grown. This blend is roasted by an exclusive process—CONTROLLED ROASTING—that insures uniform flavor in every pound. This rich, matchless flavor is completely protected by Hills Bros.' VACUUM PACK. And the GRIND of Hills Bros. Coffee gives perfect results in any coffee-making utensil.



OLYMPIA, Wash. (UP)—Washington will have an open season on elk in the Olympic peninsula region next year if game commission scouts deem there is a sufficient surplus of the animals. A survey will be made this winter to determine the elk population.

Murals Depict Industrial Life CHICAGO (UP)—The Merchandise Mart building, wholesale center, pays tribute to the industrial activities of the countries of the world in a series of 13 permanent murals that line its huge lobby. Jules Guerin, distinctive mural stylist, executed the paintings.

Gas Kills Stately Elms TOLEDO, O. (UP)—Three rows of stately elms more than a half century old, lining one of Toledo's most fashionable streets, are doomed. Gas escaping from a main under the street last winter was held in frozen ground until it poisoned the trees.

Toughest Rooster Sought DELPHOS, O. (UP)—The Delphos office of the Ohio Power Co. is seeking the oldest and toughest rooster in Allen, Putnam and Van Wert counties. A prize of \$5 is being offered for the chancier, which will be used in a cooking demonstration.

# PIGGY WIGGLY DOLLAR DAYS

PHONE Saturday, Monday, Nov. 2-4  
**9**  
For Free Delivery We Reserve Right to Limit Quantities.

<b>SUGAR</b> PURE CANE	<b>19 lbs. \$1.</b>
CATSUP—Monitor—12 oz. bottle	10c
SNOWFLAKE SODAS—2 lb. box	27c
CREAMETTE Macaroni or Noodles	3 pkgs. 23c
SOAP—P. & G. Regular	6 bars 21c
<b>SHORTENING</b> PURE VEG.	<b>9 lbs. \$1.</b>
BISCUIT MIX—Fisher's, reg. pkg.	10c
LUX TOILET SOAP—Reg. 10c bars	4 for 25c
LUX FLAKES—Lg. pkg. 23c; small pkg.	9c
ROLLED OATS—Sperry's	5 lb. bag 25c
<b>FRUIT JARS</b> qts.	<b>2 doz. \$1.</b>
SNOWDRIFT 3 lbs.	59c
6 lbs.	\$1.15
STAYING POWER	
WHEATIES package	11c
INSTANT POSTUM Large size	39c
GRAPE-NUTS regular size	17c
COCOA—BAKER'S 1/2 lb.	10c
<b>FRESH COFFEE GROUND</b>	
Evenly roasted in the new Thermalo Ovens. Our mill removes the chaff, giving you pure coffee.	
SUNRISE Best Money Can Buy	4 lbs. \$1.00
Special Blend Cups with the Best	5 lbs. \$1.00
Myrtle Blend Pride of Economy	6 lbs. \$1.00
<b>MATCHES</b> Strike Anywhere	6 Box Carton 19c
Qts. 13c	1/2 gal. 23c
<b>PUREX</b> BOWL CLEANER Perfumed Large size	19c
DRAIN OPENER	19c
<b>DEL MONTE PINEAPPLE</b> No. 1 1/4 Can	15c
DEL MONTE CORN Cream style	2 for 25c
EARLY GARDEN PEAS No. 1	2 for 25c
FANCY TUNA No. 1/4 size	10c
<b>CIDER SYRUP</b> FRESH FROM THE BEST APPLES Bring your Jug	GALLON 19c
GOOD OLD MELLOW DRIP	Corn and Cane Blend—Pint 15c
	Bring Your Jug—Quart 25c GALLON 89c
<b>Fresh Fruits and Vegetables (Saturday Only)</b>	
Parsnips and Rutabagas 4 lbs	15c
SQUASH Banana Squash—Your choice Only, each	10c
ONIONS U. S. Commercial	10 lbs. 17c
APPLES The Cookers—Pippins—C Grade—Box	69c
Sweet Potatoes Jersey's Best. 5 lbs.	14c
<b>ECONOMY Meat &amp; Fish Co.</b>	
206 E. Main. Phone 46. Free Delivery	
1 Hen, nice and fat and 1 lb. Swift's Prem. Sliced Bacon	BOTH FOR \$1.00
4 lb. Prime Rib Rolled Roast and 1 lb. Little Pig Sausages	BOTH FOR \$1.00
As a Special Treat for Dollar Day Shoppers we are offering	
<b>GRAND CHAMPION BEEF</b>	
from the Pacific International Livestock Exposition	
In line with our policy of always featuring the best.	
Gen. Leg of Spring Lamb, lb.	22c
Fresh Salmon, lb.	15c
Fresh Crabs, each	25c
Mock Chicken Legs, 7 for	25c
Sauerkraut, quart	10c
Bacon Squares, lb.	29c
Fresh Oysters, pint	28c
Full Line of Fresh Sea Foods, Cheese and Pickles	