

PICK LATOURETTE FOR SPEAKERSHIP AT NIGHT CAUCUS

(Continued from Page One.)

atory to have the address only after organization of both houses had been completed. This has not been done and a fight on both committee reports was expected in both houses.

The senate credentials committee consisted of James Chinmuck, James Hault, Dorothy Lee, Robert Duncan and John D. Goss. The house committee named was E. L. Ross, Walter Fuhrer and Charles Leach.

No changes were anticipated from the slate selected at the pre-session caucus last night, naming Harry L. Corbett of Portland president of the senate and Howard Latourette of Portland speaker of the house.

The right of Representative Glenn O. Taylor of Jackson county to occupy his seat in the house was challenged in the house credentials committee meeting during noon and this issue was being considered by the group.

Taylor would come under the same attorney-general's opinion, it was declared, since he holds a position as assistant clerk to the federal court.

The credentials committee recommended by a vote of two to one that Lew Wallace be seated in place of Farrell. This will bring the fight directly to the floor of the house.

Representative Moore Hamilton presided as chairman of the caucus last night and presented the senate members as speaker. Parliamentarians were kept busy straightening out situations caused by involved motions.

Fred Drager, veteran chief clerk, was again named to that post by the house. Other officials elected included Alton Bassett of Portland, assistant clerk; James Vernon, Portland, reading clerk; Edith Lowe, Salem, calendar clerk; William McAdams, Salem, mailing clerk; Herman Brown, Salem, sergeant-at-arms; P. J. Simmons, Portland, doorkeeper.

All elective officers of the senate were retained with the exception of reading clerk and doorkeeper. Elbert Bede, veteran reading clerk of the past house sessions, was elected in place of Mark Woodruff, who was unable to attend the session, and Bartram Loughlin was chosen in place of James Kyle as doorkeeper.

CATTLE RUSTLING CHARGE IS HEARD

O. T. Anderson, 65, of Beatty, went on trial before Judge James Alger Fee and a jury in federal court today on a charge of stealing a branded bull on the Klamath Indian reservation.

The indictment alleges that Anderson stole the bull on May 16, 1935, the animal, valued at \$175, being the property of James Chocktoot, an Indian.

Attorney Don Newbury represented the defendant while the case was prosecuted by U. S. Attorney Carl C. Donough and his assistant, Mason Dillard.

When an effort was made Saturday to get the bull to bring it here as evidence, it was discovered that it had disappeared from its pasture, according to testimony this afternoon.

OXMANS VERACITY IS DECLARED BAD

PORTLAND, Oct. 21.—(AP)—Testimony that his reputation for truth and veracity was "bad" was given today by two men who knew the late Frank C. Oxman, principal prosecution witness against Tom Mooney in the San Francisco Preparedness day bombing case.

A father and his son answered with the one word—"bad," when the question of Oxman's reputation was put to them in a continuation of the Mooney habeas corpus hearing.

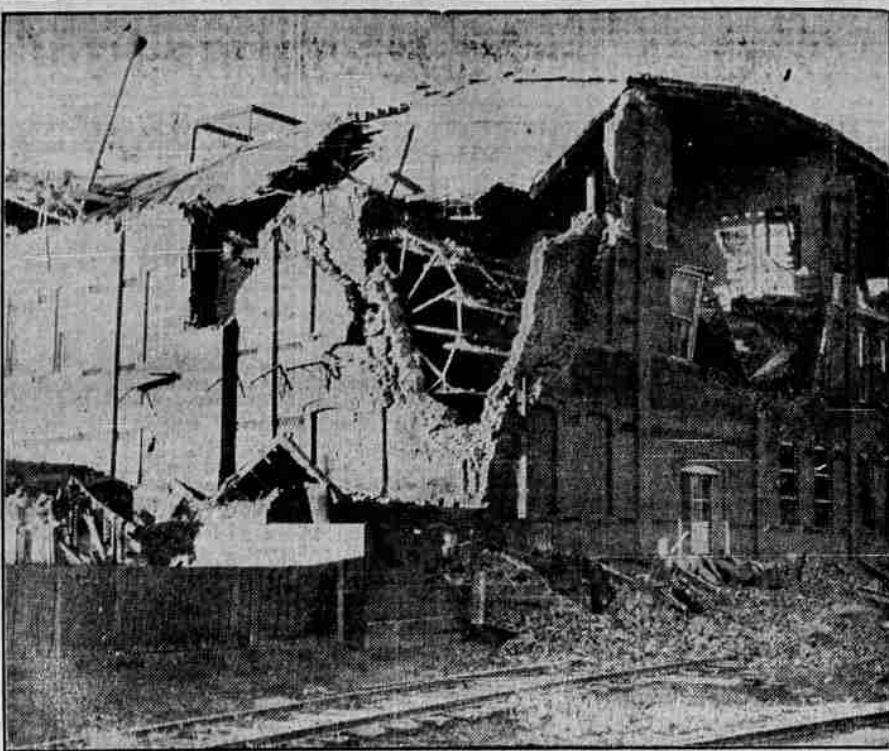
They were Frederick L. Shaw, 71, Durkee, Ore., cattleman, and Leonard A. Shaw, 31, dairyman of that region. Oxman was for many years a stock-raiser in the Durkee district.

Veteran End



Dick Joslin has played left end for the Oregon State college football eleven two years and is winding up his college career in the same position this year. He registered from Corvallis, Ore., and is in the school of education. He weighs 185 pounds and is six feet, two inches tall. (Associated Press Photo.)

WINDOW GLASS—We sell window glass and will replace your broken windows reasonably. Trowbridge Cabinet Works.



The series of earthquakes did extensive damage to the warehouse pictured above. The ruins are shown, indicating how the walls were propped off by the shock. Many structures in the center of the city were damaged as a climax to a week of intermittent shocks. Early estimates placed damages at more than \$1,000,000. (Associated Press Photo.)

Markets

Livestock

PORTLAND, Ore., Oct. 21.—(AP)—(U.S. Dept. Agr.)—HOGS 2000, including 367 through and direct. Market opened steady. Few late sales weak to 25c lower. Early bulk 170-220 lbs., 10.25. Late sales drive-ins down to 10. Weights 240-280 lbs., 9.50-9.75; light lights mostly 9.50-9.75. Packing sows largely 7.50. Light feeder pigs up to 11.25; heavies down to 9.75.

CATTLE 2000 including 105 through and direct; calves 250, market slow, unevenly steady to 25c or more lower. Bulls, best vealers, and stocker and feeder cattle about steady; other classes mostly 25c lower. Bulk grass steers 5-8.25; early top 7.75; some head higher. Heifers mostly 4-5.75; low cutter and cutter cows 2-3; common to medium 3.25-4; good beef cows 4.25-4.75. Bulls 3.50-4.50. Good to choice vealers 8-9. Heavy calves 3.50-6. Stocker and feeder steers 4.50-6.50.

SHEEP 1500. Few loads yearlings and ewes unsold. Fat lambs and odd lots older classes steady. Good to choice lambs 8-8.25; common to medium 6.50-7.75. Few yearlings around 5.50. Fat ewes 3-3.50; common down to 1.50.

CHICAGO, Oct. 21.—(UP-USA)—HOGS: 19,000; fairly active; good and choice 180-250 lbs., \$10.35@45. top \$10.50; 260-300 lbs., \$10@40; 140-160 lbs., \$10@40; sows \$9.25@40.

CATTLE—25,000; strictly grain-fed steers and yearlings steady, \$11.50 upward; top \$13.25 on weighty bullocks; several loads \$12.50@90; offerings of value to sell at \$10 downward; numerous bids on lower-priced killers and stockers and feeders 25@40c off; about 15,000 western grassers here; bidding weak to 25c lower on cows; fed heifers comparatively scarce, steady; practical top sausage bulls \$5.65; choice vealers about steady, \$9.50@10; lower grades and weighty calves 25@30c lower.

SHEEP—13,000; fat lambs moderately active; steady to stronger; asking 15@25c higher; aged sheep and feeding lambs stronger; most bids and sales on native lambs \$9.25@35; best held \$9.50@65 and above; asking \$10 for choice westerns; good to choice slaughter ewes upward to \$4.50; range feeding lambs \$9@25.

PORTLAND, Oct. 21.—(AP)—Grain: Open High Low Close May 85 1/2 85 1/2 85 1/2 85 1/2 Dec. 84 1/2 84 1/2 84 1/2 84 1/2 Cash: Big Bend bluestem (13 pct.) \$1.21 1/2 Big Bend bluestem 1.10 1/2 Dard hard winter (12 pct.) 1.11 1/2 Dark hard winter (11 pct.) .91 Soft white .83 1/2 Western White .82 Hard winter .87 Northern spring .83 1/2

CHICAGO, Oct. 21.—(AP)—Wheat: Open High Low Close Dec. 1.00-01 1.01 1/2 1.00 1/2 1.01 1/2 May 99-1.00 1.00 1/2 99 1/2 1.00 1/2 July 90 1/2 90 1/2 89 1/2 89 1/2

WASHINGTON, Oct. 21.—(AP)—Modification of the compulsory potato control law by the next congress was predicted today by Secretary Wallace.

Portland Wheat

Grade	Open	High	Low	Close
May	85 1/2	85 1/2	85 1/2	85 1/2
Dec.	84 1/2	84 1/2	84 1/2	84 1/2
Cash:				
Big Bend bluestem (13 pct.)	\$1.21 1/2			
Big Bend bluestem	1.10 1/2			
Dard hard winter (12 pct.)	1.11 1/2			
Dark hard winter (11 pct.)	.91			
Soft white	.83 1/2			
Western White	.82			
Hard winter	.87			
Northern spring	.83 1/2			

Wall St. Report

NEW YORK, Oct. 21.—(AP)—Speeding motors ran away from most other contestants in today's stock market, although scattered specialties were close seconds.

It was one of the most active sessions in more than a year. Numerous "new highs" were recorded with gains ranging from 1 to 3 points or so among the favorites. The close was firm.

Transfers approximated 2,800,000 shares. Today's closing prices for 32 selected stocks follow:

Al. Chem. & Dye	169
Am. Can	146 1/2
Am. & Fgn. Pow	6 1/4
A. T. & T.	141
Ansoconda	20 1/2
Arch. T. & S. P.	47 1/2
Bendix Avia.	24 1/2
Beth. Steel	39
California Pack'g	35 1/2
Caterpillar Tract.	37
Chrysler	87 1/2
Coml. Solv.	19
Curtiss-Wright	3
DuPont	139 1/2
Gen. Foods	34 1/2
Gen. Mot.	33 1/2
Int. Harvest	39 1/2
I. T. & T.	10 1/2
Johns-Man.	29 1/2
Monty Ward	33 1/2
North Amer.	20 1/2
Penney (J. C.)	79 1/2
Phillips Pet	31 1/2
Radio	8 1/2
Sou. Pac.	14 1/2
Std. Brands	14 1/2
St. Oil Cal.	34 1/2
St. Oil N. J.	46 1/2
Trans. Amer.	8 1/2
Union Carb.	72 1/2
Unit. Alverat	21 1/2
U. S. Steel	46 1/2

DeVoe Visit—Mr. and Mrs. Harold DeVoe and young son, formerly of Medford and now of Soledad, Cal., are visiting in Medford, and expect to remain until the end of the week before returning south. Here Mr. DeVoe is in the lumber business. Mrs. DeVoe will be remembered as the former Miss Louise Stokes of Medford.

For Hose that Wear out NOLDE & HORST Ethelwyn B. Hoffmann.

Portland Produce

PORTLAND, Oct. 21.—(AP)—BUTTER—Prints, A grade 33 1/2 lb. in parchment wrapper, 34 1/2 lb. in cartons; B grade, parchment wrapped, 32 1/2 lb.; cartons, 33 1/2 lb. BUTTERFAT—Portland delivery: A grade deliveries at least twice weekly, 33-34 lb.; country routes, 31-34 lb.; B grade, deliveries less than twice weekly, 32-33 lb.; C grade at market.

B GRADE CREAM for bottling—Buying price, butterfat basis, 85c lb. EGGS—Buying price of wholesalers: Fresh specials, 93-94c; extras, 82c; standards, 77c; extra medium, 23c; do. medium flats, 20c; undergrade, 18c; pullets, 15c down.

CHEESE—Oregon triplets, 16 1/2c; Oregon loaf, 17 1/2c. Brokers will pay 1/2c below quotation.

MILK—A grade, Portland delivery, 52 1/2 lb. butterfat basis for 4 per cent.

COUNTRY MEATS—Selling price to retailers: Country killed hogs, best butchers under 150 lbs., 18-18 1/2 lb.; vealers, No. 1, 13-13 1/2 lb.; light and thin, 2-10 lb.; heavy, 7-9 lb.; cutter cows, 8-7c lb.; canners, 4 1/2-5 1/2 lb.; bulls, 7 1/2-8c lb.; lambs, 15-16 lb.; mutton, 10-15c lb.; ewes, 4-7c lb.

LIVE POULTRY—Portland delivery, buying price: Colored hens, over 2 1/2 lbs., 18-17c; under 2 1/2 lbs., 17-16c lb.; Leghorn hens, over 3 1/2 lbs., 14-15c lb.; under 3 1/2 lbs., 14-13c lb.; spring, 2 lbs. and up, 16-17c lb.; colored spring 3 to 3 1/2 lbs., 16-17c lb.; over 3 lbs., 16-17c lb.; roosters, 8-9c lb.; Pekin ducks, young, 18-17c lb.

ONIONS—Walla Walla, 50-60c per 50-lb. bag; Oregon, \$1.50 100 lbs. POTATOES—Local, \$1-1.25 cental; Klamath, \$1.25-1.30 cental; Deschutes, \$1.20-1.25 cental; Yakima netted, \$1.15-1.20 cental.

CANTALOUPE—Nominal; Dillard, \$1.50 per crate; Willamette valley, \$1.25 per crate.

WOOL—193 clip, nominal; Willamette valley medium, 25c lb.; coarse and braid, 28c lb.; eastern Oregon, 18-22c lb.

HAY—Buying price from producer: Alfalfa, No. 1, \$14.50-15; eastern Oregon timothy, \$18; oats, \$12 ton; Willamette valley timothy, \$15-16; clover, \$10-12 ton, Portland.

Wall St. Report

NEW YORK, Oct. 21.—(AP)—Speeding motors ran away from most other contestants in today's stock market, although scattered specialties were close seconds.

It was one of the most active sessions in more than a year. Numerous "new highs" were recorded with gains ranging from 1 to 3 points or so among the favorites. The close was firm.

Transfers approximated 2,800,000 shares. Today's closing prices for 32 selected stocks follow:

Al. Chem. & Dye	169
Am. Can	146 1/2
Am. & Fgn. Pow	6 1/4
A. T. & T.	141
Ansoconda	20 1/2
Arch. T. & S. P.	47 1/2
Bendix Avia.	24 1/2
Beth. Steel	39
California Pack'g	35 1/2
Caterpillar Tract.	37
Chrysler	87 1/2
Coml. Solv.	19
Curtiss-Wright	3
DuPont	139 1/2
Gen. Foods	34 1/2
Gen. Mot.	33 1/2
Int. Harvest	39 1/2
I. T. & T.	10 1/2
Johns-Man.	29 1/2
Monty Ward	33 1/2
North Amer.	20 1/2
Penney (J. C.)	79 1/2
Phillips Pet	31 1/2
Radio	8 1/2
Sou. Pac.	14 1/2
Std. Brands	14 1/2
St. Oil Cal.	34 1/2
St. Oil N. J.	46 1/2
Trans. Amer.	8 1/2
Union Carb.	72 1/2
Unit. Alverat	21 1/2
U. S. Steel	46 1/2

DeVoe Visit—Mr. and Mrs. Harold DeVoe and young son, formerly of Medford and now of Soledad, Cal., are visiting in Medford, and expect to remain until the end of the week before returning south. Here Mr. DeVoe is in the lumber business. Mrs. DeVoe will be remembered as the former Miss Louise Stokes of Medford.

For Hose that Wear out NOLDE & HORST Ethelwyn B. Hoffmann.

Chicago Wheat

Grade	Open	High	Low	Close
Dec. 1.00-01	1.01 1/2	1.00 1/2	1.01 1/2	1.01 1/2
May 99-1.00	1.00 1/2	99 1/2	1.00 1/2	1.00 1/2
July 90 1/2	90 1/2	89 1/2	89 1/2	89 1/2

WASHINGTON, Oct. 21.—(AP)—Modification of the compulsory potato control law by the next congress was predicted today by Secretary Wallace.

CARPENTER GIVES PLANNERS' VIEWS ON CAPITOL SITE

(Continued from Page One)

average of such capitol centers in other parts of the country. The total estimated expense is \$3,500,000 for the building, with the government paying 45 per cent of the cost. The maximum required of the state for building and grounds would be approximately \$2,025,000. The final report of the state planning board made the following principal recommendations: build capitol building on Willamette site as center of state unit group, pay for building out of general fund by 1940 without additional taxation or bond issue, use Oregon materials wherever possible, award final plans of building on competitive basis.

John Anderson of Central Point, was a guest at the luncheon, and was called on to express the views of the Grange. Mr. Anderson said the Grange west of the Cascades at least was opposed to the purchase of any added property and favored building the new capitol on the old site, by "going up in the air," constructing a combined capitol and state office building, of a skyscraper pattern.

Mr. Carpenter said the objection to such a plan was that such construction would be far more costly than smaller group buildings, and according to the state planning commission architects, a skyscraper design would be inartistic and inappropriate for a state, where land is cheap, the least costly and from the standpoint of a proper state center, one of the most important factors in appropriate and permanent construction.

Mr. Carpenter pointed out that the Willamette site was not his idea personally, that the decision had been reached by the commission before he became a member, that he was merely trying to make the commission's recommendations, as clear as he could, in the time allowed.

Keen interest in the talk was shown by those present and a number of questions were asked of the speaker and answered. The matter of the club endorsing the state planning commission's proposal was referred to the proper committee for later action.

Mr. Carpenter's talk was preceded by musical numbers given by the South Fork CCC camp composed of Virgil Ruth, violin; LeRoy Thompson, banjo and Thomas Laninger, saxophone.

TREASURY PLANS BIG DENT IN PUBLIC DEBT WASHINGTON, Oct. 21.—(AP)—The treasury said today it plans to reduce its public debt by at least \$200,000,000 on next March 15 through the retirement of maturing securities with proceeds of income receipts.

TEACHERS NUDE BODY INDICATES FOUL PLAY LTOLA, S. D., Oct. 21.—(AP)—The nude body of Lela Halvorson, 24, Madison, S. D. school teacher, was found in a hotel room yesterday under circumstances indicating possible strangulation by an unidentified assailant. Two men were known to be under questioning.

Night Coughs Quickly checked without "dosing." Just VICKS VAPORUB

From California



John Cassery came to Oregon State college from Pasadena, Calif., to play football and made the squad as a left end. He's playing his final year of college football. He's 21 and weighs 195 pounds. His height is given in the roster as six feet, three inches. (Associated Press Photo)

DOMESTIC CHEESE PRICES ADVANCED

PORTLAND, Oct. 21.—(AP)—Advances were forced in the entire domestic cheese price during the last week. The advances were generally 1/2@1c lb., the greatest rises being shown as a rule in the western sector.

Trading in the butter market is showing price advances with all cube prices higher for the late season of the produce exchange. The supply of medium is gaining but pullets are decreasing.

Demand for live chickens remained good and prices in general continued to be maintained. There were only moderate offerings aside from springers which are somewhat better than other lines.

SOLONS AWAITED BY CITY GROUP

Members of the house military affairs committee who have been inspecting army fields in the northwest were expected to arrive at the municipal airport this afternoon. Hour of arrival was uncertain.

The congressmen left Pearson field, Vancouver, this morning and were expected in Medford about 11 a. m. but their ship was forced down in Eugene because of heavy weather. A committee headed by Mayor George W. Foster waited at the airport until noon when word was received by radio of the Eugene landing. The congressional committee is enroute to Hamilton field, Cal.

EUGENE, Oct. 21.—(AP)—Four United States congressmen, enroute by air from Seattle to Medford, were grounded here by fog this morning and planned to remain here several hours. In the party were Congressmen John J. McSwain, South Carolina; Joseph Smith, Connecticut; and Sam L. Collins and John L. Costello, California.

McSwain, chairman of the committee of the lower house now studying the proposed location of air bases on the Pacific coast, indicated that selection of these sites would not be made for some time.

BUCKINGHAM'S HOME - MADE CANDY. English Toffee, Regular 60c per lb. Special 40c per lb. The Crest, 35c So. Central.

GUNSMITH. Repairs for all makes of guns. Sims Bros., 23 N. Fir.

SICK HEADACHE Help Nature with Nature. If you suffer with sick headache, neuralgia, periodical and other pains due to inorganic causes, and have taken man-made drugs or newfangled remedies, without satisfactory results, use the tried, proven, natural way of eliminating the cause. It's simply this: Add "Crazy" Water Crystals to your drinking water according to directions inside the package and drink the water at home as though you were taking the "cure" at the "Crazy" Wells in Texas - America's Great Health Resort. At your druggist.

Tonight— 8:00 O'clock HOLLY THEATRE FREE LECTURE ON CHRISTIAN SCIENCE by BICKNELL YOUNG, C.S.B. of Chicago, Illinois Member of the Board of Lectureship of The Mother Church, The First Church of Christ, Scientist, in Boston, Mass. Subject "Christian Science: Not a Mere Name, But Absolute Science" The Public Is Cordially Invited

SPECIAL THIS MONTH ONLY \$2.88 Per Month TRADE IN YOUR FUEL RANGE



YOUR CHOICE of Hotpoint-Westinghouse-Monarch latest model automatic electric range

THIS SOLVES Your Kitchen Heating Problem Ask About It! Our every effort is directed toward the best possible electric service to our customers. Our constant aim is to improve your satisfaction with electric service. Our action in offering these ranges to you at this time is solely in the interest of economical, efficient, electric service. We believe it will be much to your advantage to trade in your fuel range on one of these ranges, before the limited supply we have secured is sold. We will make a liberal allowance for your old fuel range and install without extra charge, the electric range you select, if within the city limits. Very easy terms and this low price gives you an opportunity to modernize your kitchen that should not be overlooked.

The California Oregon Power Company

MEMBER THE ORDER OF THE GOLDEN RULE

A Thing of Beauty

The final services should be a thing of beauty—a cherished memory that may be retained in the hearts and minds of the family.

Realizing this fact, we have always striven to make our service such, that a beautiful memory picture results.

PIERRE FUNERAIL HOME MORTICIANS OFFICE OF COUNTY CORONER SIXTH AT OAKDALE PHONE 47 DAY OR NIGHT MEDFORD, OREGON

SHERWIN-WILLIAMS PAINT SPECIAL

27c can of ENAMELOID The Quick-Drying Decorative Enamel

- 16 bright colors
- easy to apply
- 1 coat does the job
- produces washable, porcelain-like finish

12c WITH COUPON

Try your hand with Enameloid—you can do a beautiful "professional" job with this enamel. Excellent for furniture, woodwork, bathroom walls, toys, pottery, etc.

SIGN THIS COUPON

This signed coupon and the advertised price entitles you to the special checked below. Limited—one to a customer.

Polish-Ol 19c or Polish-Ol 59c Enameloid 12c

STOVE PIPE ENAMEL 36 Pint 30c

S.W. ALUMINUM PAINT 1/2 Pint 30c

S.W. FURNITURE POLISH 1/2 Pint 19c

Hubbard Bros. Inc. Main and Riverside. Phone 231 PAINT HEADQUARTERS