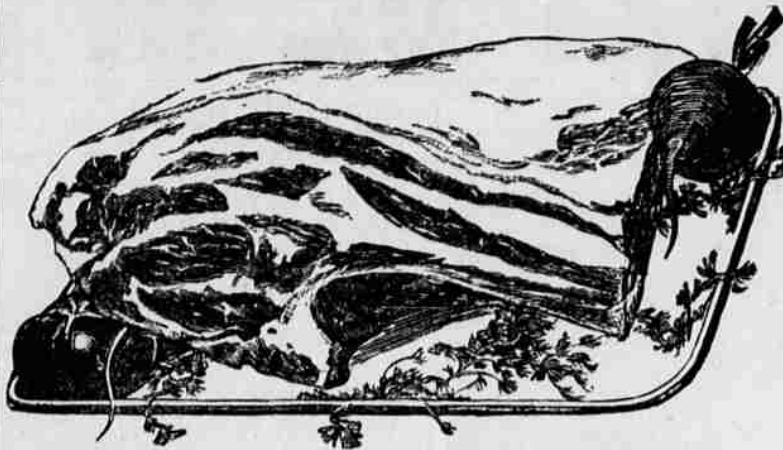


GROCETERIA SUPER FOOD MARKETS

BREAD AND CAKES LIKE MOTHER MADE

Tender Meats—Essential to Health



WITH the tendency to insufficiently chew any but the tenderest meats—the meat you eat has a lot to do with your general health—for good digestion is really the key to health.

This is especially true of children who to get the necessary proteins must have meat—yet few if any chew sufficiently.

That is why we sell none but the finest steer beef—why we hold it in our big cooler until the flavor is most pleasing—and so tender you can cut it with a fork.

Tender meats with a pleasing flavor will be chewed easily yet longer because the eating is a pleasure rather than a task.

All of this—plus super-sanitation truly guards your health—and your purse—for good meats cost no more.

The man who sells you has not just taken money from other hands and pockets.—Our cutters do not handle money.

Super Meat Markets

Real Country Style Sausage

Fall is near and the yearning for real farm-style sausage is apparent.

Saturday we offer tiny links. As in past years our sausage will be country-ground and seasoned—will be made from choice cuts of pork—the kind you would be glad to serve in your home.

Tiny Link Pork Sausage, lb. 27c
Let's have hot cakes and sausage tomorrow.

Corned Beef, lb. 17c
Prepared from tender steer beef—it cooks in less time.

Steer Beef Roasts, lb. 12½c
Tender and flavorful—a fine Sunday dinner.

Fancy Steer Short Ribs, lb. 10c
The finest flavored meat is on the short ribs—Baked with new potatoes they provide a fine family dinner.

Swiss Round or Sirloin Steaks, lb. 20c
There is none so good as a fine Swiss Steak.

Leg of Lamb, lb. 19c
Milk fed lambs carefully selected.

Boned and Rolled Shoulder of Lamb, lb. 19c
No bone waste—a dandy roast from milk fed lambs.

Veal and Ham Loaf, lb. 15c
Hundreds of pounds weekly of this fine ready-ground meat loaf are sold.

Hamburger, 2 lbs. 25c
There is a big difference in Hamburgers—We're mighty cranky about our ground meats.

Pocketed Pork Chops, lb. 27c
Cut double thickness—They are pocketed for dressing.

Veal Steaks, shoulder cuts, lb. 15c
Tender, milk fed—fine for broiling.

Pure Lard, 2 lbs. 35c
The price is down a little.

Shortening, 4 lbs. 49c
Good quality—we bought tons to get a low price.

Morrell's Eureka Bacon, lb. 35c
Iowa corn fed—well smoked—a dandy breakfast bacon.

Heavy Colored Milk Fed Fryers, lb. 27c
Grain fed and finished by milk feeding—It makes a lot of difference.

Boiled Ham, lb. 50c
Cudahy's Puritan vacuum cooked.

Minced Ham, lb. 23c
A dandy sandwich meat.

Special Pork Loaf, lb. 33c
Takes the place of Ham in the sandwich. Fine for the cold plate lunch.

Savings in the Groceteria Food Departments

A Dependable Source of Supply

Sperry's Rolled Oats, 9 lb. bag 33c
That fine old cereal at a low price.

Campbell's Tomato Soup, 3 cans 20c
A fine emergency reserve for unexpected guests.

La France Powder, pkg. 8c
Makes clothes whiter.

Soft as Silk Cake Flour, pkg. 29c
Adds that extra something that makes an otherwise ordinary cake perfect.

Del Rogue Tomato Juice, No. 1 tall can, 3 for 23c
Besides being a healthful beverage makes the finest cream of tomato soup.

Standard Oil (Oronite) Liquid Wax, qt. 37c
An easily applied yet lasting floor wax.

Sperry's Cracked Wheat, 5 lb. sack 24c
A healthful whole wheat cereal.

Smacks, pkg. 15c
The more you eat the more you want.

Bob White Laundry Soap, 10 bars 15c
A good Laundry Soap from the Procter and Gamble factory.

Sperry's Farina, No. 5 sack 27c
An energy building wheat food—a bone and muscle builder for children.

Edgemont Cheezits, pkg. 10c
A fine wafer with well-seasoned cheese added.

Oxydol, large pkg. 19c
Makes quick suds—a dandy work saver.

Sperry's Pancake Flour, 4 lb. sack 25c
You don't know Hot Cakes until you know Sperry's.

L-W Soda Crackers, 2 lb. box 28c
The large Soda Cracker from the Sunshine bakery—Salted or plain.

Camay Toilet Soap, 4 bars 17c
A fine Toilet Soap from the makers of Ivory.

Rockdell Cane and Maple Syrup, 10 lb. can 98c
Has the real Maple flavor so good with hot cakes.

Rippled Wheat, 2 pkgs. 19c
A sample package of 4 biscuits with each package.

Fruits and Vegetables

WATERMELONS



[Average Weight 25 lbs.] EACH 19c

Strawberries, 3 boxes 25c

Sunkist Lemons, 360s, doz. 19c

Sunkist Oranges, 252s, 2 doz. 35c

Fresh Limes, doz. 30c

Sweet Potatoes, 4 lbs. 15c

Green Peppers, 5 lbs. 10c

Cucumbers, 3 for 10c

Large Celery, fancy, 2 for 17c

Celery Hearts, 2 bunches 25c

Danish Squash, lb. 4c

Summer Squash, 3 lbs. 10c

Banana Squash, lb. 2½c

Red ripe Tomatoes, 4 lbs. 10c

New Potatoes, best quality, 25 lbs. 37c

Egg Plant, lb. 5c

Dry Onions, 5 lbs. 10c

Green Beans, 4 lbs. 15c

Clicquot Ginger Ale, pint bottle 10c
Put a case of this fine Ginger Ale in the pantry.

Poast Toasties, pkg. 7c
A thicker corn flake.

Suprex Tea, Green Pekoe, ½ lb. 29c

Jello, 2 pkgs. 11c
All of the new fruit flavors—The original Gelatin Dessert.

Suprex Tea, Graan Japan, ½ lb. 19c
Whether you prefer Green or Black tea this is indeed an extra value.

Sure-Jell, 2 pkgs. 25c
A powdered pectin for making jams, jellies and preserves.

C. H. B. Sweet Pickles, pint jar 19c
Finest quality in an easy-to-open jar.

Home Purity Mayonnaise

Costs less yet a lot better because fresh.
Pint 20c --- Quart 39c

Shrimp (Gulf's Best) can 10c
A fine quality salad shrimp.

Your Favorite Coffee At a Saving

- Golden West, 3 lb. can 75c
- Hills Red can, 2 lb. can 53c
- Maxwell House Coffee, 2 lb. can 49c
- Schillings Coffee, 2 lb. can 53c
- Del Monte Coffee, 1 lb. can 25c
- Shasta Coffee, 2 lb. can 45c
- S & W Coffee, 2 lb. can 47c
- M J B Coffee, 2 lb. can 53c
- Chase and Sanborn Dated, lb. bag 23c

Z-MOR-U COFFEE
Best because freshest—Roasted this week—ground the day you buy.
1 lb. 25c—3 lbs. 73c

BEANS

- Beans offer the easiest and best way to keep down the cost of living.
- Small White Beans, 4 lbs. 19c
 - Large White Beans, 3½ lbs. 19c
 - Baby Limas, 3½ lbs. 19c
 - Large Limas, 2½ lbs. 19c
 - Red Mexican, 3½ lbs. 19c
 - Pinks, 3 lbs. 19c
 - Crabberys, 2½ lbs. 19c
 - Bayos, 2½ lbs. 19c
 - Blackeye Pea, 2 lbs. 15c
 - Red Kidney, 2½ lbs. 19c

REFRESHMENTS at The FOUNTAINS

Hale Peaches with Ice Cream 10c
Local Hales in syrup with a generous helping of Ice Cream.

Fresh Huckleberry pie a la mode 10c
Fresh Huckleberries—our famous Crumble Crust and Ice Cream.

Fresh Apple Pie a la mode 10c
Good apple pie is the best pie in the world.

Aunt Martha Fudge Cake a la mode 10c
A wonderful new chocolate cake.

Fountain Plate Dinner
Served from 11 A. M. to 7:30 P. M.
Steer Beef Pot Roast with noodles—Baked Ham—Cold Plate or Turkey with dressing.
25c to 29c

HOME PURITY BAKERY

Aunt Martha's Fudge Cake 25c-49c
Here is a cake that should delight the men—Tend with rich chocolate specially treated—It is a marvelous chocolate cake.

Maraschino Pineapple Danish Pastry, 3 for 10c
The lunch box special for next week—Variety makes the lunch appreciated.

Apple Spice Drops, doz. 20c
Spiced drop cakes with apple sauce—a healthful nourishing sweet.

Cookies, doz. 10c
10,000 cookies are a lot but every week that many of our Home Purity Cookies go to the cookie jars for Medford children.

Coffee Cake, 2 for 15c
Regular week day 15c seller—A fine Sunday morning breakfast.

Old English Cheese Bread, 1 lb. 15c
Everybody likes a toasted cheese sandwich—Here it is but the cheese is right in the bread—Enjoy your breakfast toast tomorrow as never before.

Covered Wagon Bread, 1 lb. 8c
The bread of the early Pioneer. Delightful flavor—long keeping quality.

Home Purity Bread, 1 lb. 8c

Home Purity Bread, 1½ lb. 12c
Genuine Home Style with that much sought Home Flavor—Free from chemical substitutes—so eat all you want.

More "Free" White King Granulated

We have another shipment of the pound packages of White King to give with the large packages.



Large Pkg. White King 1 lb. Pkg. White King Both for 32c

Delivery of \$1.00 Orders
Phone:
West Side 428
East Side 752

GATES & LYDIARD

WHY SHOP AROUND FOR BARGAINS FIRST COME TO YOUR SUPER FOOD MARKETS

6th at Central
6th at Grape
Saving Without Self-Denial