

# See Wards 1936 Washers! Save up to 1/3!

THE MORNING EXAMINER

WARD'S NEW  
**HEADLINE VALUES**  
WED., THUR., FRI., & SAT.

World's Largest Radio Retailers Save You Up to 1/2 on This Sensational

## 1936 RADIO

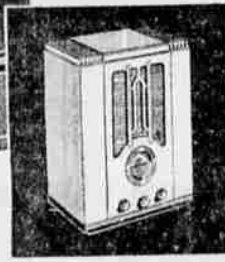
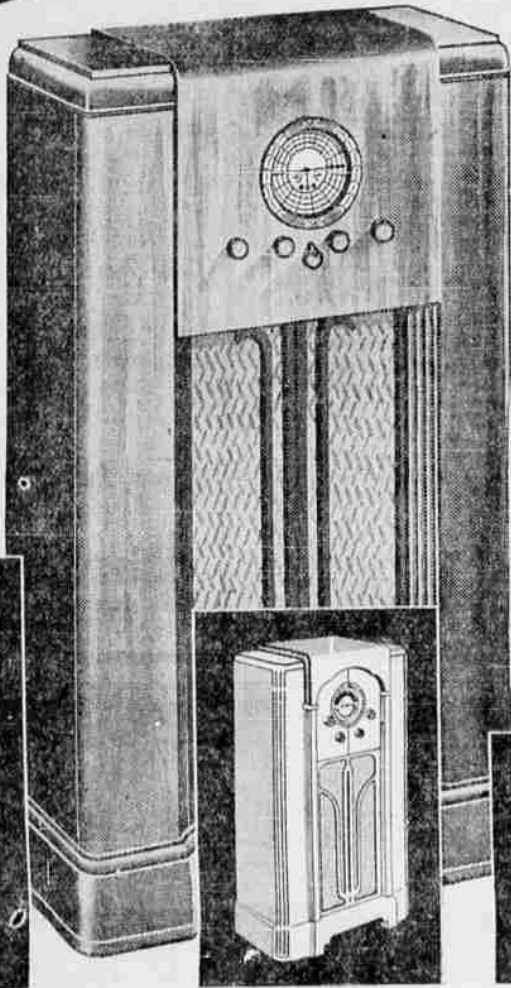
- HIGH FIDELITY
- NEW METAL TUBES
- YET ONLY

### 54<sup>95</sup>

\$5 Down, \$6 Monthly, Small Carrying Charge

Get 1936 high fidelity reception! Wards newly-designed world range chassis is built to make effective use of radio's newest achievement—metal tubes!

- World Range—18.3 MC to 540 KC (5 bands)
- Inter-Station Noise Suppression
- Instant Dialing with Micrometer Tuning
- Fine-toned Super Dynamic Speaker
- Quick-Action Automatic Volume Control
- Personal Tone and Volume Indicators
- Licensed by RCA and Hazeltine Laboratories



10-TUBE RADIO

SEE THIS RADIO!

LOW PRICE!

New Battery Radio

**64<sup>95</sup>**

\$6 Down, \$7 Monthly Carrying Charge

**39<sup>95</sup>**

\$4 Down, \$5 Monthly Carrying Charge

**23<sup>95</sup>**

\$3 Down, \$4 Monthly Carrying Charge

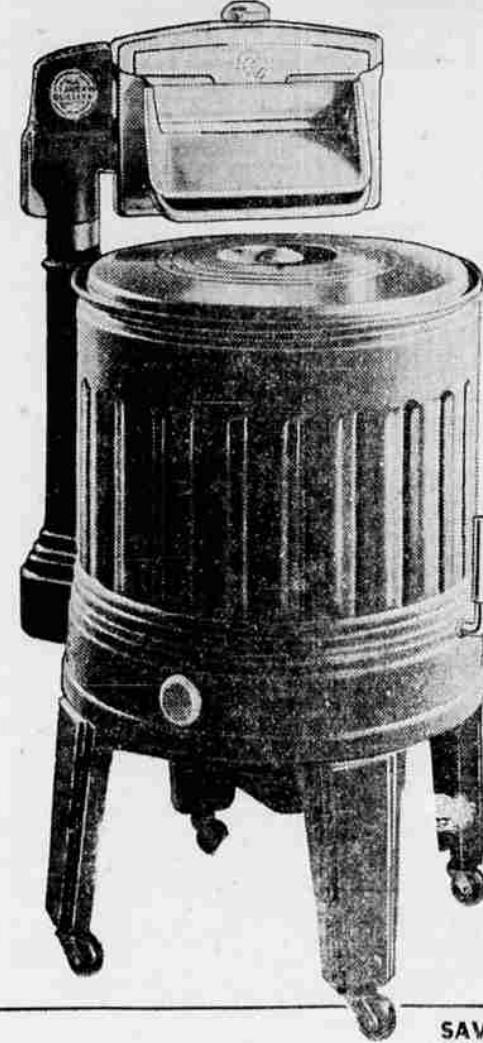
**27<sup>95</sup>**

\$3 Down, \$4 Monthly Carrying Charge

- Great power for foreign stations
- Metal Tubes—High Fidelity
- Instant Dial—Micrometer Tuning
- Adjustable Selectivity
- Inter-Station Noise Suppression
- Beautiful hand-rubbed cabinet
- Licensed by RCA and Hazeltine

See metal tubes, instant dial, etc. U.S. and foreign stations. Metal tubes! U.S. and Foreign stations! Handsome cabinet! Licensed by RCA and Hazeltine. See it! All batteries inside. See this 1936 improved art. See the low Ward price!

## BIG 18 Gallon Tub WASHER



### 63<sup>95</sup>

\$5 Down, \$6 Monthly, Small Carrying Charge

See this great new washer today! Streamlined in style and gives streamlined performance. Its big tub holds more clothes. Then its new double crown agitator washes faster by test! See its new Lowell wringer with adjustable roll pressure and touch-action safety release. Note its concealed drain and single-turn drain dial. Compare with \$75 and \$85 washers. Save!



• Largest Household Size!

SAVE UP TO \$25

## WASHER

Wards De Luxe Quality. Mammoth 20 gallon porcelain tub, black outside, white inside. Saves 1/4-1/2 time! Has all latest features. Compare with \$75 and \$85 washers. Save!

**71<sup>95</sup>**

\$5 Down, \$6 Monthly

## No Finer Stoves Made! See What You Save!



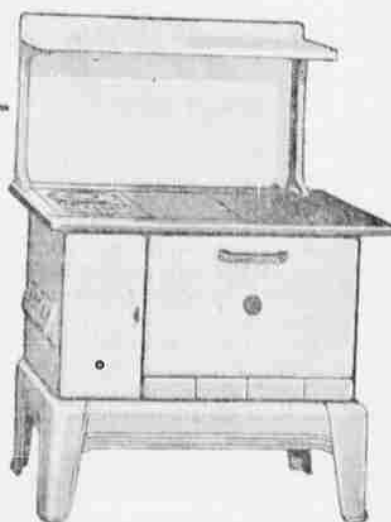
Full Porcelain Cast-Iron **RANGE**  
**49<sup>95</sup>**

\$5 Down, \$5 Monthly, Small Carrying Charge

- Full ivory and green porcelain enamel!
- Cast-iron, heat-treated griddle top!
- Full 18 in. cast-iron oven!
- Wards exclusive double cleanout doors!
- Cast-iron firebox and grates for coal, wood!
- Cool Bakelite handles. Many other features!

Quick Heat Steel Oven  
Cast Iron Griddle Top  
**RANGE**

Plenty of quality in this low-priced cook stove! Roomy firebox may be fitted with water coil. Handy front feed for wood. Burns coal, too. Nickel and enameled trim! Very economical!



### Handsome Wood Circulator

Heats three rooms easily. Come see its fine design, exclusive with Wards, its smooth-grained walnut porcelain enamel finish. And these features:

- Cast-iron linings, a full 6 inches deeper than most.
- Thick steel inner unit with cast bottom!
- Cast-iron top and top cooking lid.
- Entire right side cast iron, including doors!
- Wood or coal grate easily installed!

Ever Built!

**37<sup>95</sup>**

\$4 Down, \$5 Monthly, Small Carrying Charge

### Walnut Porcelain Wood Burning Circulator



**24<sup>95</sup>**

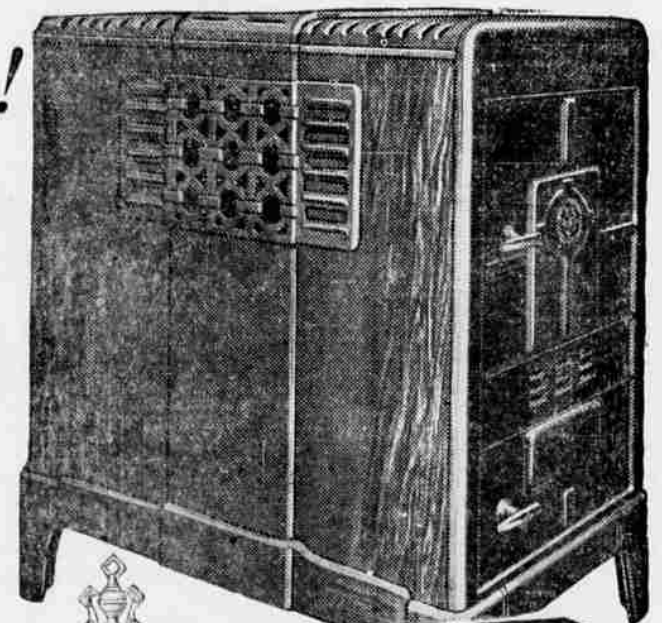
\$5 Down, \$4 Monthly, Small Carrying Charge

Heats 2-3 rooms easily! Cast-iron top, front-frame, door and firebox bottom! Body of quick heating steel. Big feed door. Cabinet of woodlike walnut porcelain enamel. See it!

Sturdy, Efficient Wood-Burning **HEATER**

**20<sup>95</sup>**

The strong steel body is quick heating and economical of fuel. Top, end, feed door, bottom and 9 inch lining all cast-iron. Big feed doors at end and top. Trim of shining nickel! A Ward value!



Oil Burning Circulator

- Two powerful wickless burners give hot, blue flame!
- Chrome-steel burner inner chimneys for long service!
- 2-gal. Kerosene tank!
- Proper baffling gets all the heat from the fuel!
- Walnut porcelain steel cabinet. Sturdy, beautiful!
- Cool Bakelite handles!

**18<sup>95</sup>**



117 SOUTH CENTRAL  
TELEPHONE 286

# MONTGOMERY WARD