

FOREIGN TRADE EXPERT SPEAKS BEFORE ROTARY

An interesting address on foreign trade was presented before the luncheon meeting of the Medford Rotary club at Hotel Medford today, by H. E. Waterbury of Portland. Mr. Waterbury spoke with authority as he is manager of a district embodying Oregon, Idaho, and southern Washington for the bureau of foreign and domestic commerce, U. S. Department of Commerce.

The problems of Oregon and Washington are identical, as both states produce similar commodities. Mr. Waterbury said. Oregon raises considerably more than the state can consume, he said, in pointing out that twenty-five per cent of Oregon's lumber goes to foreign countries, while markets in other countries receive forty per cent of Oregon's grain and flour, sixty-five per cent of the apples and forty to fifty per cent of the pears and canned goods produced here.

In discussing the volume of Oregon's exports, Waterbury pointed out that the depression in this state might be well attributed to the slump in foreign markets, as evidenced by the fact that the 1932 export total was only approximately twenty per cent of the volume in 1929. New trade agreements, however, give promise of continued improvement.

Of special interest to southern Oregon people, were the export figures on fruit, given by Waterbury. Depression time shipments of apples were even greater than previous years, although netting less return. The shipment of pears has been more favorable, due to trade agreements with France and other European countries.

Mr. Waterbury discussed in detail the status of foreign trade before, during and after the World war when the United States assumed the role of a creditor nation. At the end of the orgy of buying in 1929, trade barriers were set up by this country, and other countries retaliated. Now the administration is endeavoring to improve conditions through special concession trade agreements. Such agreements have already been completed with 12 nations, Cuba being the first. Sweden, a country in splendid financial condition at this time, should present a good market for Rogue River Valley fruit, according to Waterbury.

The speaker concluded with a brief discussion of the much discussed Russian situation, and pointed out that already this year private and public interests have purchased in excess of twenty-five million dollars worth of American products. The newly completed agreement with Russia calls for a volume of thirty million dollars during 1935, and indications are that this total will be exceeded by a substantial figure.

MUNICIPAL PWA LOANING UPHELD

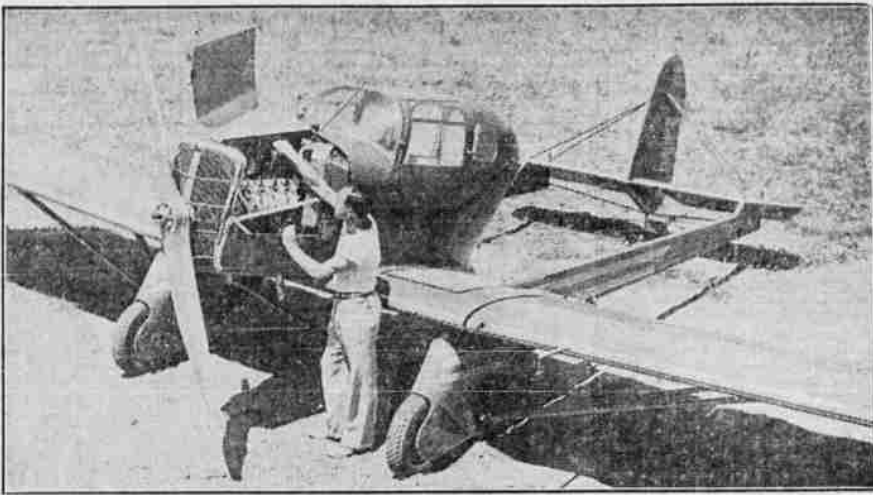
DENVER, Colo., Aug. 20.—(AP)—The Roosevelt administration was upheld today in a United States circuit court of appeals decision sustaining the government in making loans and grants to municipalities.

The case was that of the Kansas Gas & Electric Co. of Kansas City, seeking an injunction against a loan for a municipal power plant.

Attorneys said the option is regarded as of the highest importance because it affects billions of dollars worth of projects now under construction in connection with the PWA program.

The Mail Tribune wants ads.

NEW PLANE POWERED BY AUTOMOBILE MOTOR



A new low-winged monoplane, powered by a stock automobile motor, and its designer, Neil McGaffey, at a Los Angeles airport where tests were made. It has a speed of 115 miles an hour with a 35 mile landing speed. (Associated Press Photo)

ROGERS AND POST DIE IN 'TOP OF WORLD' CRASH



The bodies of Will Rogers, beloved humorist, and Wiley Post, globe girdling airman, were being cared for by Dr. Henry Griest, medical missionary in charge of the Presbyterian hospital in Point Barrow, Alaska, America's most northerly white settlement. Post and Rogers were killed when their plane plunged 50 feet into two feet of water 15 miles south of Point Barrow. Pictured at right is the manse, next to it the icehouse and the mission (with spires). The structure at the left was not identified. (Associated Press Photo)

LUMBER INDUSTRY FUTURE BRIGHTENS

SEATTLE, Aug. 20.—(AP)—An increase of 17,000 cars of lumber a year to be hauled by railroads into the area from the Illinois-Indiana line eastward to the Atlantic coast was predicted today by the West Coast Lumbermen's association as a result of the 72 cent freight rate on lumber from the Pacific northwest to points east of Chicago, effective Saturday.

The decrease was announced yesterday by the Interstate commerce commission.

"The best news in the world, the best the west coast lumber industry has had for a long time," the association commented, referring to the new rate.

"The principal effect will be felt at once by the rail mills, those specializing in the retail lumber trade, furnishing lumber to railroads and to factories for remanufacturing. Most of this business would normally flow by rail and the new rate will open up a large and important territory to the west coast mills."

Slaughter House Burns

VANCOUVER, Wash., Aug. 20.—(AP)—The Curtin & Sinn slaughter house on the outskirts of town burned last night with an estimated loss of \$4,000, part of which was covered by insurance.

HIGH SPEED ARMY MANEUVER TRIED

PINE CAMP, N. Y., Aug. 20.—(AP)—Foreign military observers witnessed a spectacular demonstration of fast U. S. troop movement today when the "Iron" first division, racing to Harrisville to smoke out an imaginary enemy force, performed in an hour and a half a maneuver that previously would have taken until noon tomorrow. Earlier it had been expected the movement would take six hours.

Military attaches from Japan, Russia, Germany, China, Spain and Mexico witnessed the maneuver, which was Uncle Sam's own experiment in troop movement with modern high speed equipment.

Tires scorching along the highways of northern New York as 3,000 men in 850 trucks and tractors raced 25 miles from Gates' Corners to Harrisville to force an imaginary enemy to disclose its strength.

Board Has Authority

SALEM, Ore., Aug. 20.—(AP)—Attorney General Van Winkle ruled today that the state board of higher education has authority to dispose of any of its property, not required for use for educational purposes. The request for the opinion was made by the state board of higher education.

The ancient Egyptians used spoons carved of ivory, flint, slate and wood.

COUNTY'S POOR FARM TO BE IMPROVED WITH AID OF FEDERAL COIN

Federal allotment of \$2501 to Jackson county, under the work relief program has been made for renovation and improvement of the county poor farm, according to a telegram received late yesterday from Senator Frederick Steiwer. The county under the plan provides \$3367.

Commissioner Ralph Billings said this morning that under the plan the county would purchase the material and hire the supervisor.

Improvement to the poor farm, to enable the county to care for minor indigent illnesses, has been under consideration for six months as a means of reducing the heavy bills for relief hospitalization. Hospitalization—particularly during the winter months—is one of the largest items of relief expense. Heretofore it has been necessary to send all cases to hospitals.

The county plans to install sick wards for both men and women, a sun room, enlarge the basement, replace floors, and enlarge the space to provide for the care of more patients. Work is expected to start as soon as the federal money is received, and arrangements can be made.

FURTHER ISSUANCE EXEMPT SECURITY WILL BE ALLOWED

(Continued from Page One)

dividends received by one corporation from another. This rate would amount to about 15 per cent.

6. Estate taxes ranging from 2 per cent on the first taxable \$10,000 to 70 per cent on the excess over \$50,000,000.

7. Gift taxes: Approximately three quarters of the estate levies.

The Borah amendment, forbidding

future issues of federal tax-exempt securities, and the McCarran amendment, repealing much of the silver purchase act, were eliminated. Harrison estimated these taxes would bring in \$263,000,000 a year. But he added the bill's provision permitting corporations to deduct from their incomes gifts made to charitable organizations would reduce the total by \$13,000,000. President Roosevelt had vigorously opposed such deductions.

Adjustment by the conferees of house and senate differences over the legislation was regarded by leaders as a major step toward quick adjournment.

GENEVA, O.—(UP)—At the age of three weeks, James Carl Wessolick underwent an operation for hernia here.

FIND BODIES OF TRIO IN WRECKED AIRPLANE WYOMING MOUNTAINS

GLENDON, Wyo., Aug. 20.—(AP)—

Bodies of three Indianapolis residents apparently killed instantly when their private plane crashed against the side of Laramie peak, 40 miles from here, were found beside the wreckage of the ship by members of a searching party this morning.

The three persons, missing since they took off from Helena, Mont., last Thursday, are Burnside Smith, 47, Indianapolis business executive; Dick

Arnett, pilot of the ship, and his bride, Eleanor.

A rancher named Peake who discovered the wreckage said the ship was burned, that it "undoubtedly was that of the Indianapolis people" and that three bodies in it were burned and broken.

The discovery was reported to Captain George Smith, flying former cowboy and member of the Wyoming highway patrol who previously had seen the wreckage from the air in a flight this morning over the peak.

"The plane is eight miles up the peak in awful rough country," Smith said.

EXCELSIOR SPRINGS, Mo.—(UP)—

Farmers of northwest Missouri are helping their incomes by hunting foxes this winter. Fox pelts bring from three to four dollars, and one farmer collected nearly \$40 when he sold a dozen skins.

Sale The New "Samson Deluxe" BRIDGE TABLES

MANN'S LOWER MAIN FLOOR

Style No. 1
Black Samson Hyde top—liquor-proof, burn-proof, washable. Leather grain. Smartly decorated in silver or red. (Large illustration below.)



REGULARLY \$4.00 TO \$6.00
\$2.98

America's Most Famous Bridge Tables
3 FOR \$8.75

What is this Deluxe model?

A smoother, sturdier table with extra refinements!

- Each table guaranteed for a year!
- Choice of six beautiful styles with washable tops
- More leg room—extra height
- Three braces under the top
- Double braced legs—an extra deep frame
- Smooth steel banding around table top—rounded steel corners.

A table that will fit in with the finest furnishings and fill a dozen needs in the home!

MAIL AND PHONE ORDERS PROMPTLY FILLED

Please send me the following card tables at \$2.98 each.

QUANTITY	STYLE NO.	COLOR

Name _____ Charge
Street _____ Cash
City _____ State _____ C.O.D.

Style No. 2
Wood grain finish. Looks like burl walnut.

Style No. 3
Antique white trimmed with Ivory. Red or Black.

Style No. 4
Walnut wood grain finish with chess board in center.

Style No. 5
Spanish grain Fabrics with lace center design, green or black.

Style No. 6—(Not illustrated). Washable Swivel-seats. Choice of Green, Brown, or Red.

PAY NOTHING DOWN

ONLY **\$11.98** A MONTH



That's How Easy It Is to Enjoy In YOUR Home—The Advantages of a MONTAG Automatic Oil Burner

675 Gallon Oil Tank and Complete Thermostatic Controls, etc., Included!

There's not one reason to wait for modern heating comfort in your home. See us... have it now! Have the automatic convenience... the real comfort... economy and pleasure of modern MONTAG heating at once. Enjoy a product built by a factory which has been located here in Oregon for more than 55 years... backed by us as the authorized local dealer!

Let Us Solve YOUR Heating Problems For You!

LEONARD ELECTRIC CO.

309 East Main St. MORRIS B. LEONARD. Phone 427

on the sky line of the Canadian Rockies



Throughout the glorious mountain playground of the Canadian Rockies, Chalet-Bungalow Camps have been established at various scenic points. Accessible by motor car and by trail, each one offers individual opportunities for vacation, rest and recreation... fishing, swimming, hiking and trail riding.

CHALET-BUNGALOW CAMPS

are situated at Moraine Lake, in the Valley of the Ten Peaks; at Lake Wapiti, 5,219 feet above sea level; Yoho Valley, facing Takakkaw Falls; Radium Hot Springs at Simclair Canyon; and at Lake O'Hara. Operated on the American plan, the rates are only \$8 per day, or \$21.50 per week. Low Summer Rail Fares are now effective... All information, literature, tickets and reservations at our offices below.

CANADIAN PACIFIC

W. H. Deason, Gen'l Agent, P.O. Box 428, S. W. 2nd St., Vancouver, B.C., Canada

Lovely Sport Coats

In the New Wools for Fall!

When you Travel... whether you go to college... or stay at home... for every day these Sport Coats at \$10.95 are an all weather pal. You can toss them around because their soft all wool materials are woven for sports and winter wear. They are styled single and double breasted. Half belts and full belts... new shades... new weaves... plain and novelty. You cannot afford to be without a sport coat at this price.



SECOND FLOOR

ON SALE WEDNESDAY AT MANN'S **\$10.95**

A Grand Coat for High School and College Wear



KNITTING CLASSES from 11 A. M. to 5:30 P. M.—Thursday, Friday and Saturday