

You Can Do All Your Food Shopping at

LUMAN BROTHERS



Main and Bartlett



You will be surprised just how easy it is to get the habit of shopping at this store, where you can secure EVERYTHING for the pantry—save countless steps and make substantial savings as well. Here you'll find up-to-the-minute stocks of quality, nationally known foods, well displayed for the aid of busy housewives!

SPECIALS FOR SATURDAY

CHOICE MEATS

- Choice R. I. Red Fryers . lb. 23c
- Choice R. I. Hens . . . lb. 20c
- Beef Pot Roast . . . lb. 12½c
- Beef Short Ribs . . . lb. 10c
- T Bone & Sirloin Steak . lb. 20c
- Swiss Steak . . . lb. 20c
- Shortening . . . 3 lb. 39c
- Fresh Ground Hamburger . lb. 10c

Fine Assortment of Lunch Meats

GROCERIES

FLOUR

Kitchen Queen
49 lb. \$1.69

Klamath Falls
Bouquet
49 lb. \$1.45

IGA or MORNING MILK
Per Can . . . 6c

PEANUT BUTTER
2 lbs. . . 35c

SALAD DRESSING
Pint . . . 20c

SYRUP

A good assortment of syrup at real bargain prices!

FRESH FRUITS & VEGETABLES



- Solid heads Lettuce each . . . 5c
- String Beans 2 lbs. . . . 5c
- Solid Cabbage lb. . . . 2½c

We Have Ice Cold Watermelon!

CANNING PEACHES

CANNING PEACHES ARE NOW ON THE MARKET! OUR PRICES are LOW

BAKING DEPT.

Avail yourself of the convenience of our bakery department. Here you will find a complete assortment of fine breads and pastries all fresh from the bakery. Note the special values we offer each week.

Praline Pecan Cake
23c each

Thin Sliced Rye and Sandwich Breads are just what you want for packing house lunches. Try them.

LUTHER JOE RIGGS CALLED BY DEATH

Luther Joe Riggs, a resident of Medford for the past 12 years, passed away in a local hospital early Friday morning at the age of 24 years, after suffering but a short time. He is survived by his wife Helen, and a son, Glenn Luther, of 303 Boardman street; also by his father and mother, Mr. and Mrs. Herman Riggs; one brother, Ross Riggs, four sisters, Ruth, Pauline and Frances Riggs of Medford and Mrs. Sidney Jones of Richmond, Cal.

Funeral services will be held from the Conger funeral parlors Saturday at 3:00 p. m. Rev. D. E. Millard will have charge of services and interment will be made in the Medford I. O. O. F. cemetery.

THIRD SPRAY FOR MOTHS DUE SOON

A third cover spray for the control of codling moth on apples should be completed by August 24, according to the recommendations of L. G. Gentner, entomologist of the Southern Oregon Experiment Station, and C. B. Cordy, assistant county agent.

Use three pounds of powdered lead arsenate in one hundred gallons of water.

This spray should protect apples against codling moth worm attack until picking time.

Because of the low moth flight it is not considered necessary to spray pears at this time. If the recommended spray schedule has been followed the coverage on the fruit should be sufficient to prevent further entries.

ANCIENT TIMBER FOUND IN HAWAII

SAN FRANCISCO (UP)—Although incredible to modern users of wood, it is believed by scientists here that specimens 200,000 years old have been brought to light in Honolulu. The wood is not petrified, but is almost as hard as metal.

The age of the wood is fixed by the probable date of its burial. It was recovered from beneath the lava flow at Diamond Head and all the geological data obtainable indicates that that eruption took place at least 200 centuries ago.

A surveyor working on the Manoa flood-control canal dug up pieces of a log and submitted them to scientists for identification. Dr. Herbert E. Gregory, director of the Bishop Museum, one of the most famous institutions of its kind in America, is of the opinion that the Diamond Head lava-flow has been in position for 200,000 years. Wood beneath it must have grown before that time. The wood resembles that of the ohia tree, which still grows in the islands.

Thompson Creek

THOMPSON CREEK, Aug. 16.—(Sp.)—Mr. and Mrs. Clifford Sullivan and Mr. and Mrs. Bud Thorough and families left Monday evening to spend a week at the coast.

Mike Shams has returned from Nebraska to his farm.

Mr. and Mrs. S. L. Johnston, Miss Eva and Ada Johnston and Dee Johnston enjoyed a trip to Crescent City over the week-end, where they celebrated Miss Eva Johnston's birthday.

Among business visitors in Medford Wednesday were S. L. Johnston, Herbert Elmors, Frank Knutzen, Frank Quick, Fred Powers.

Mrs. George McCollum, Melvin McCollum, La Vene McCollum, Mrs. Esther Burroughs of Klamath Falls and Mr. and Mrs. W. S. Robinson visited



A WORD TO THE WIVES IS SUFFICIENT

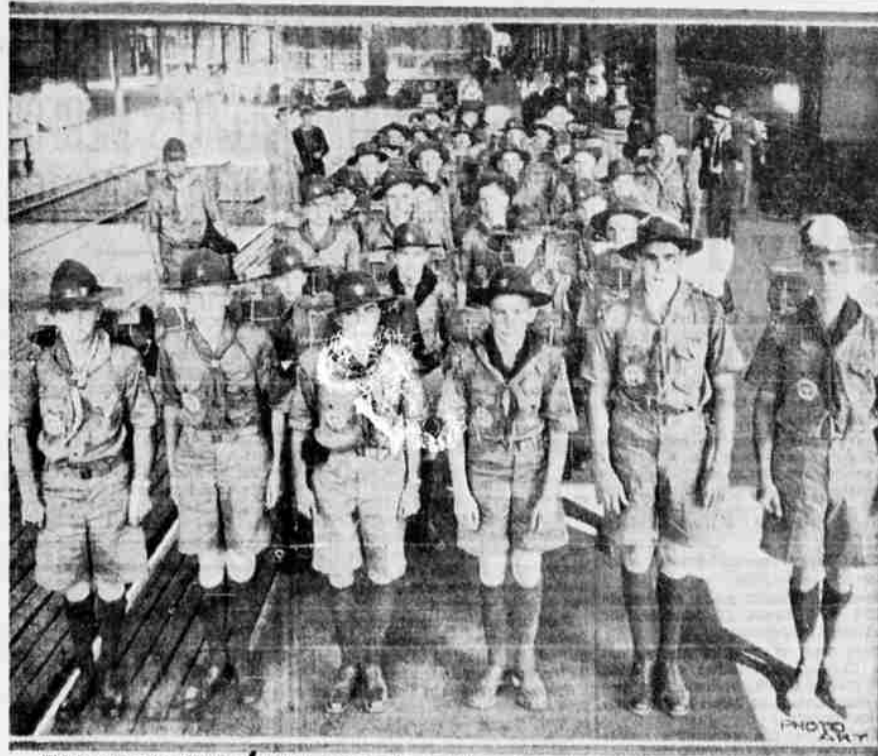
The meals you serve help keep the family fit. In many homes, constipation results from insufficient "bulk" in the menu. This can be overcome by a delicious cereal.

Research shows that Kellogg's All-Bran furnishes "bulk" in convenient form. All-Bran also provides vitamin B and iron.

How much better it is to eat this gentle natural food than to risk taking patent medicines. Two tablespoons daily are usually sufficient. Chronic cases, with each meal. If not relieved, see your doctor.

Serve as a cereal with milk or cream, or use in cooking. Appetizing recipes on the red-and-green packages. At all grocers. Made by Kellogg in Battle Creek.

First Stop of Medford Scouts on Trip



Thirty-one Boy Scouts from the Crater Lake council of Medford, comprising Siskiyou, Jackson, Josephine, Klamath and Lake counties, shown upon arriving at the Union depot in Portland last Saturday on an extended tour which will take them into Canada and to the eastern United States coast. The boys spent half a day seeing the sights of Portland, including Jantzen beach, as guests of the General Petroleum corporation. Left (to rear) Frank Hull, assistant scoutmaster; left (front) Dick Roberts, assistant scoutmaster, and A. O. Soderberg (right front), scoutmaster.—(Mobilgas photo).

their relatives, Mr. and Mrs. Herbert Elmors, Sunday.

Among those swimming at the Applegate bridge Sunday afternoon were Frank Mee and Margaret Franks.

TACOMA, Aug. 15.—(AP)—Captain Alfred J. Braden, Jr., 46, judge advocate of the third division, regular army, died today at the Fort Lewis hospital after a week's illness.

Scorpions were already in existence in the carboniferous period and there is an essential structural difference between these fossils and existing forms.

A proverb of the Scilly Isles, which lie off Cornwall, England, tells that for every man who dies a natural death on the islands the sea takes nine.

Scranton, Pa., is the metropolis of the great anthracite region of northeastern Pennsylvania.

Peach Recipes

Summertime Dessert

4 shredded wheat biscuits, crumbled
½ cup chopped and sweetened peaches
½ cup chopped nut meats
1 cup cream

Mix first three ingredients and fold into whipped cream. Six portions.

Hamburger Royale
2 cups chopped beef
1 small onion, chopped salt and pepper

2 shredded wheat biscuits
¼ cup chicken stock or milk
2 tablespoons butter or chicken fat

Combine meat, finely rolled shredded wheat and stock or milk. Season with salt, pepper and onion. Shape into small cakes. Fry in hot butter or fat until brown on one side. Turn and brown on the other side. If desired, mushroom sauce may be served over this dish. Six portions.

Peach Muffins
4 shredded wheat biscuits, rolled fine
1 cup flour
2 teaspoons baking powder
½ teaspoon salt
1 tablespoon sugar
1½ cups milk
1 egg
¼ cup chopped peaches

Into shredded wheat crumbs sift flour, baking powder, salt and sugar. Add milk and well beaten egg. Fold in the peaches. Pour into well-greased muffin pans and bake 20-25 minutes in hot oven (450 degrees Fahrenheit). Makes 12 muffins.

Shredded Wheat Eggs
Eggs can be made more tasty and uncrumbling by the addition of shredded wheat crumbs. Did you know that half a cup of shredded wheat crumbs and a little milk, added to omelet or a scramble, will make three eggs service six people?

Use Mail Tribune want ads.

NEW HYBRID CORN TURNS CINCH BUGS

WASHINGTON (UP)—It's going to be a tough proposition for cinch bugs to destroy new strains of hybrid corn developed by the United States department of agriculture and state experiment stations.

The new hybrids are highly resistant to the bugs and also are high in yield and quality of grain. Thus far, however, they have been grown only on a small scale.

In 20 co-operative field tests last year in eight central Illinois counties, cinch bug resistant hybrids yielded 46.3 bushels an acre, compared with 33.4 bushels for local varieties, and 27.3 bushels for hybrids susceptible to the bugs.

Although well constructed and maintained barriers stop the first brood of bugs from advancing out of small grain into corn, the agriculture department said, there are no known measures for preventing adult bugs of the first brood from flying into cornfields and depositing eggs from which hatch the second brood that feeds on the corn until it matures or is killed.

Development and use of corn highly resistant to second brood bugs, along with erection of barriers, is believed to be the most practical and effective method to guard against tremendous losses to individual growers.



A cup of Schilling Coffee properly served — and he's friendly as a puppy. Then he's off to work on Wings of the Morning!

Try Schilling Coffee. It's sturdy and dependable. With reasonable care it delivers a delicious cup. It's Wings of the Morning!

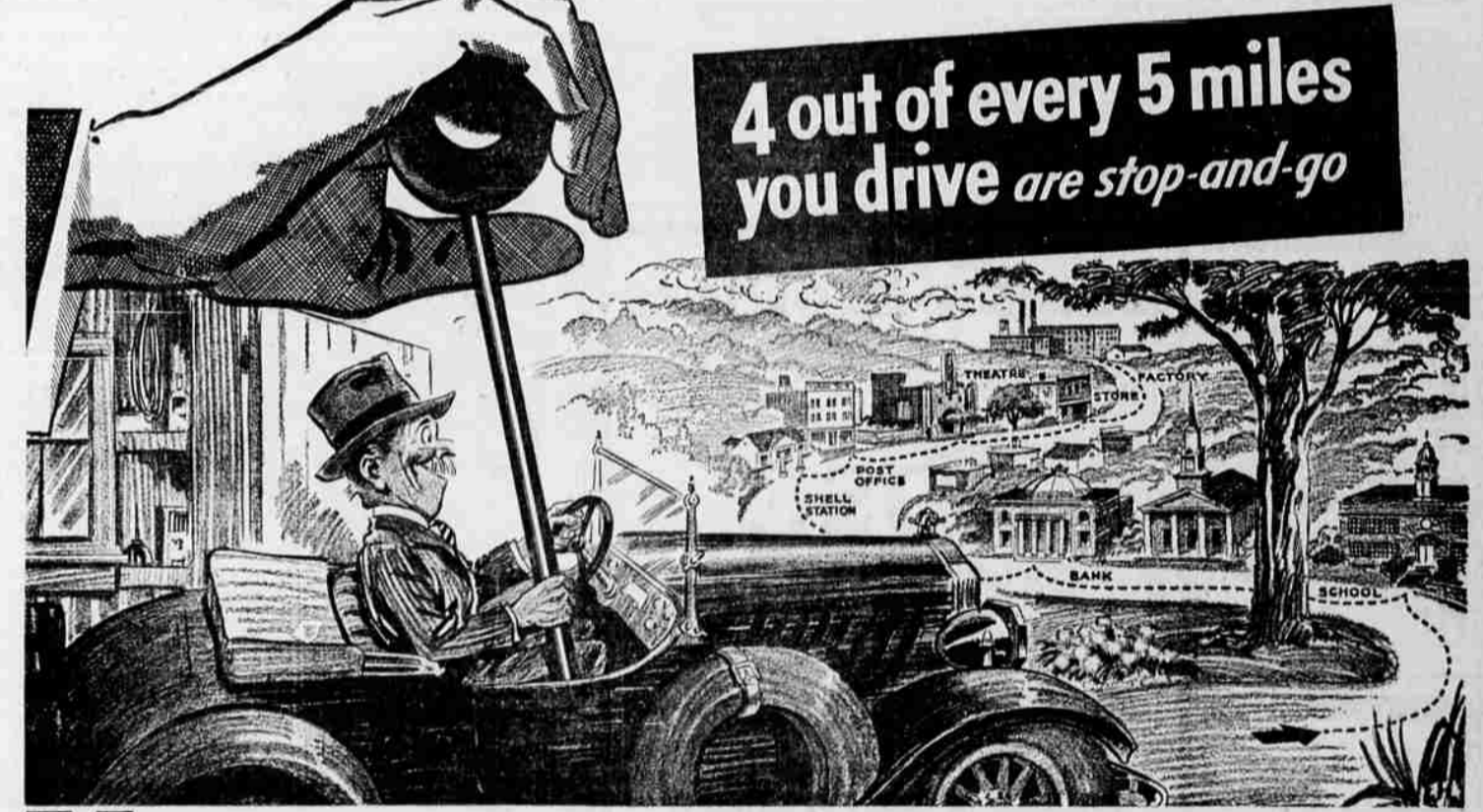
Schilling Coffee

There are two Schilling Coffees. One for percolator. One for drip.

Just the thing for the lunch or picnic. A raised donut mix. Made like Maple Bars with Chocolate Icing . . .

CHOCOLATE BARS 23c Dozen

At your favorite food store or at



4 out of every 5 miles you drive are stop-and-go

You start over a Ton moving more than 30 times a day

SAVES Gasoline in 3 Ways:—

- STARTING**—Super-Shell can save up to a cupful on every "cold" start. (Even in summer, your engine is relatively "cold" after being idle an hour.)
- SHIFTING**—Super-Shell can save up to a cupful in 10 minutes of hard pulling, or rapid accelerating, or on hills. It also avoids wasteful knocking.
- RUNNING**—It can save up to a cupful, motorist reports, in an hour on the long stretch—thus saving gasoline on LONG trips as well as on short runs.

Remember, when you save 16 cupfuls you save a whole gallon!

Today's shift—shift—shift is hard on your pocketbook—unless your gasoline has these **Three Kinds of Power**

THE average low-priced car weighs 2,600 pounds! That's why you use the **double** power of low gear to get your car moving. Naturally, the more power in your gasoline . . . the easier it is to get your car moving . . . the quicker you can flash out into "high" . . . and the less gasoline you use. Power for this kind of HARD PULLING is

mighty important. But to cut driving costs, you've got to have TWO OTHER KINDS of power as well!

FIRST, power for QUICK STARTING . . . which means you must have a gasoline that vaporizes quickly!

SECOND, power for STEADY RUNNING . . . which means ample heat units!

The engineer's problem is to get ALL of these kinds of power into a gasoline . . . without "SKIMPING" on any. In short, to get them in perfect BALANCE. Super-Shell is the first TRULY BALANCED gasoline. And so it saves money in 3 ways! Stop today at one of the 30,000 neighborly Shell stations from Coast to Coast.

SUPER-SHELL

8,600 neighborly stations in the West

