

AUTOMOTIVE NEWS

OREGON SWITZERLAND IS GOAL DELIGHTFUL DRIVE

Long Sunday drives, while nearly always entertaining, are not always feasible for the average family, so a shorter trip, but a very interesting one is suggested for today.

This trip, because of the condition of the roads, is not a loop trip but there is a fine picnic spot, with water, at the far end. It is known as the Oregon Switzerland drive, and takes one in about eight and one-half miles, high into the Cascades. Wm. H. Schmidt, a native of Switzerland, came to southern Oregon some time ago, and discovered this lovely spot.

He has developed the natural beauty of the place by the judicious removal of brush, and planting of shrubs and other landscape work. A view of the entire valley is obtained from there, and the scene is really awe-inspiring. The road to Oregon Switzerland is narrow, steep and twisting in places, and requires low-gear pulling in spots, but the surface is smooth and it is a matter of less than a half hour's drive from town.

Follow out the Hillcrest road, onto the new Roxy Ann drive. On this leg of the jaunt you will skirt the new CCC camp under construction. The buildings here are now well along, and will prove interesting to those who have never visited one of the camps. A bit farther on are old store

buildings used by the Western Orchard company when the trees for that project were being planted. Past the old store is a fork in the road, the left branch leading on up to Roxy Ann. This side trip, with the road now passable but not good, is well worth the trouble driving up, and while the park at the summit is still in the embryonic stage will serve as a pointer to what a tremendous advantage the park will be when completed.

In making the Oregon Switzerland trip, follow straight instead of turning at the fork in the road and follow the signs and best travelled roadway. Agrarian scenes, tall timber, ancient farm houses and stately but decaying old homesteads furnish a delightful afternoon's tour.

It is possible to follow over the divide from the picnic spot, and by driving tortuous and steep mountain roads emerge on the Antelope section of the Eagle Point desert, but this is a more difficult journey. Many who have visited Oregon Switzerland declare the scenery to be unexcelled anywhere on earth. Be this an exaggeration or not the view is a lovely one, and one that you will want to see again and again. The closeness of the place to Medford makes it one of the best evening drives to be had.

Most Personality and She Wins Cup



Miss Eugenia Abbey, 20, 1467 Fourth avenue, San Diego, became "The Spirit of San Diego" at America's Exposition, Balboa Park, when she was named from a group of 36 "personality girls" chosen from communities all over the country. The three dozen beauties were guests for luncheon at the Ford Exposition building prior to the judging.

The AUTO WAY.



By Cyril Sander.

The Chrysler Motor company recently announced a new and different Chrysler Airstream. It is known as the Chrysler Deluxe Airstream Eight. There are, however, practically no vital changes in it, except for equipment and the addition of a new model. This car, however, is very completely equipped from dual horns in front to dual tail lights in the rear. It is truly a deluxe car in every sense of the word. For instance, in the interior you have a new window moulding that harmonizes very beautifully with the rest of the interior trim. The instrument panel has been somewhat improved, too, to add to the smartness of the car. The board has new dial faces and is set off by some well placed chromium lines. All of these new cars, that is in the sedan, have individual foot rests for the rear seat occupants, along with assist cords and arm rests. There are, of course, arm rests in the front too. Dual sun visors, cigar lighter, and ash trays front and rear are also included in the interior equipment. These new cars can also be easily distinguished from their exterior equipment. Starting from the front of the car we first have the newly mounted dual horns. Next comes the hood louvers with

their "winged 8" at the front. Then the dual windshield wipers and the chromium stripped running boards. Stearing the back we next have the wheel shields which are also included in the equipment and then lastly the dual tail lights. On these models with trunks a difference can also be seen in the chromium lines and the Chrysler name-plate which are on the lid of the trunk.

In this new line of cars a new model has also taken its place. It is the seven-passenger sedan. This model is very much the same as the others, except for its longer wheelbase and its two auxiliary seats.

We believe that in these cars Chrysler has put the deluxe equipped cars before the public in the real sense of the word.

HOOD RIVER LADY KIDNAPED, FORCED DRIVE 1200 MILES

GREELEY, Colo., July 27.—(AP)—Weld county officers today were investigating the story of Mrs. Julius Le France, 40, of Hood River, Ore., that she was forced by an unidentified man to drive him 1200 miles, to Idaho Springs, Colo.

Mrs. Le France, accompanied by James Carter, 37, and Fred Province, 19, told her story when officers questioned her regarding a collision on the highway near here about 1 a.m. Deputy Sheriff Theodore Tegtmann of Greeley said Mrs. Le France told



Aerial view of San Diego's California Pacific International Exposition, where color, romance and amusement have been woven into a labyrinth of interesting exhibits. Balboa Park, 1400 wooded acres shaded by palm, acacia, cypress and other beautiful trees, houses the many buildings of early Spanish architectural design. (Kepec photo, courtesy Shell Free Travel Information Bureau).

him she had been pteeking near Hood River with Carter and Province last Sunday and was returning home when they had to stop because of car trouble. While they were working on the machine, Tegtmann quoted her, a man with a revolver stepped out of the weeds, held them up and forced them to drive him to Idaho Springs. At Castle Rock, Sheriff C. H. Howell said the woman and boys reported the alleged abduction and gave a

general description of the man. He said an order from Oregon authorities to hold the car was received shortly after the trio continued north.

SAN FRANCISCO, July 27.—(AP)—The Norwegian freighter Høegh Trader ran hard aground on Hornschoke shoals on the northern tip of the Fiji Islands late tonight, radio messages received here early today said.

New Nash "400" Packingless Pump Eliminates Leaks

One of the many new features of the new Nash "400" that is exciting considerable favorable comment among car owners is the new car's packingless water pump. Because of its novel construction the possibility of leakage occurring in the pump has been practically eliminated, according to Walter W. Abbey, local Nash and LaFayette dealer.

Nash engineers have replaced the old-time "packing gland" with a bakelite ring surrounding the pump drive shaft, and seated against the inner surface of the front pump cover plate. Locked in position by means of a pin through the shaft, this ring is also held tightly against the cover plate by a synthetic rubber sleeve, under constant tension, which is mounted on the shaft between the ring and the pump impeller.

The tests to which the new "400" pump has been subjected indicate that the new principle entirely eliminates any chance of water-pump leakage for the life of the car.

Mr. Abbey reports that Everett G. Miller is the first Medford owner of a new 1936 Nash-built LaFayette, which is already creating considerable comment here.

Walter W. Abbey, Inc. also delivered new Willys sedans to C. K. Newton of Talent and William Briggs of Ashland and a new 3-ton International truck to the Oregon Orchards during the past week.

Leaves for Spokane—Wauwata Nelson left Friday evening by train for Spokane.

Use Mail Tribune want ads.

OREGON CORN-HOG FARMERS MAILED FIRST '35 CHECKS

WASHINGTON, July 27.—(AP)—The farm administration mailed today its first 1935 corn-hog checks, sending more than \$4,000,000 to farmers in 23 states.

Claude E. Wickard, corn-hog chief, said 61,478 checks for \$4,004,914 were put into the mails. Iowa farmers will get more than one-fourth of this sum.

The checks are the first to go out on the more than a million contracts upon which cooperating producers eventually will be paid about \$185,000,000 in two installments. The first installment, which probably will take about two months to distribute, will amount to about \$85,000,000.

The first payment checks represent one-half of the total hog payment due the farmers in the 1935 program. The final installment will be paid some time after January 1, 1936, when local administrative expenses can be determined and deducted.

The states to which corn-hog checks were sent today, and the amount represented included: Idaho, \$6,103,000; Montana, \$17,955,600; Oregon, \$38,228,850; Washington, \$37,849,200.

Safety Factor Is Important Phase Of Treadprinting

Public consciousness of the fact that motoring is no safer than the trees which equip the automobile, has been aroused by the campaign launched by Goodyear in a safety drive to check up on tires that are dangerous.

Dramatized by the treadprint plan, by the inspection stories of Joseph A. Faurot, fingerprinting and crime expert, who made a survey for the tire company, and carried through to careful individual inspection of the tires on cars of customers' s definite, well-planned program, to eliminate the unsafe tire equipment on highways this summer has been producing results.

"Certainly it is a plan to help business," said C. C. Furnas, local Goodyear dealer. "But it is more than just that. It is a worthwhile safety measure. Goodyear dealers believe it will pay big dividends in lives saved, accidents prevented and general safety improvement right when it is needed most—at the peak of the year's biggest driving season.

"The treadprint operation provides a quick, simple, but positive proof of the exact condition of the tires on the car, and this check-up is offered without obligation," Mr. Furnas said.

"We can show anyone in a minute just what his tires will do in case of emergency stops on the highway, because we can see what there is in the way of tread to provide adequate traction if a quick demand is placed upon the carcass. The car owner can hold the proof of his tire's ability in his hand and see at close range upon just what his motoring safety depends.

State Worker Passes. SALEM, July 27.—(AP)—William Henry Fisher, 75, for many years a resident of Salem, for 16 years an employe of the state penitentiary and later janitor at the state supreme court building, died here late yesterday.

ROOSEVELT GUEST CRITIC OF T.V.A.

WASHINGTON, July 27.—(AP)—Accompanied by Comptroller General McCard and a number of other guests, President Roosevelt left the White House by motor today for Annapolis, Md., to spend the week-end on Chesapeake bay. McCard, a Republican, whose tenure of office is not subject to the president's wishes, recently criticized some of the outlays made by the Tennessee valley authority.

PIERCE-ALLEN SHOW NEW DODGE TRUCKS

A variety of new model Dodge trucks was unloaded by the Pierce-Allen Motor Co. last week and another car will arrive next week, according to L. C. Taylor, sales manager. Mr. Taylor says: "The new all-steel cab and the new 74-inch body pickup are exciting an unusual amount of favorable comment. The cab is absolutely new in design and construction."

The Pierce-Allen Motor Co. will unload a car of Plymouths Monday and also a car of Dodge automobiles next week.

Fire Chief



Wm. Bachelor is fire chief at Pendleton.

Chrysler and Plymouth DEMONSTRATORS At BIG Savings

Chrysler Airstream 8 Sedan
Chrysler Airstream 6 Sedan
Plymouth Deluxe Sedan
Plymouth 2 Door Touring Sedan

Armstrong Motors, Inc.
Phone 18 38 North Riverside

NEAREST TO EVERYTHING IN SAN FRANCISCO

HOTEL MANX

New in dress, beautifully finished rooms, with colored tiled baths and showers, located on San Francisco's famous Powell Street opposite Union Square • Restaurant • Coffee Shop • Cocktail Room • Circulating Ice Water.

RATES: 1.50 - 2.00 - 2.50 - 3.00 SINGLE
2.50 - 3.00 - 3.50 - 4.00 DOUBLE
GARAGE SERVICE AT ENTRANCE
POWELL AT OTARRELL STREET • SAN FRANCISCO
HARVEY M. TOY, MANAGING OWNER
"MEET ME AT THE MANX"

Before You Buy a Truck Body See Us and Get the Facts!

It Will Surprise You to learn the **LOW COST** of Mann's Medford Made Custom Built **TRUCK BODIES**

MANN'S AUTO SERVICE
ED. MANN B. E. ADAMS
1229 N. Riverside Phone 835-31

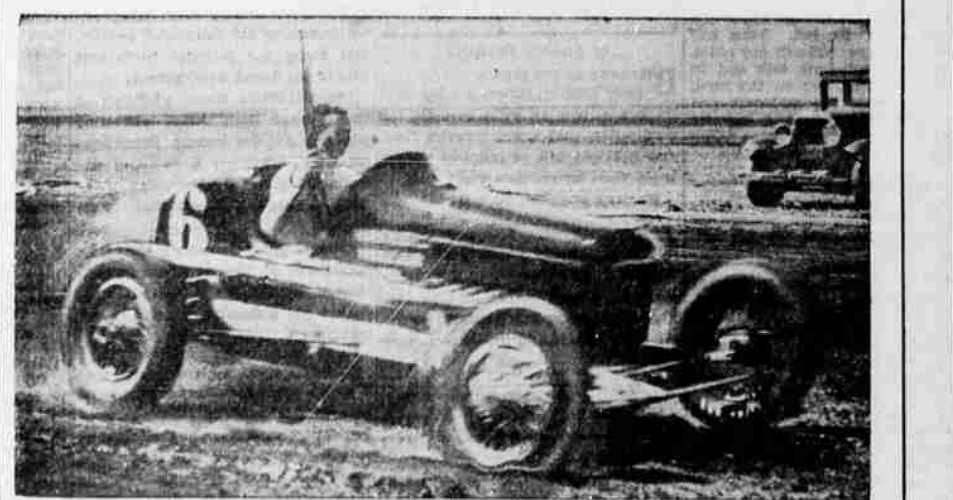
NOW

Automatic Safety for Your Car AUTOMATICALLY STEERS IN EMERGENCIES

The Sensational New MacWayde Hydraulic Steering Stabilizer

- Absorbs shocks of hitting obstructions, blowouts, etc., and holds car true to its course regardless of speed.
- Does not interfere with normal steering in any way.
- Relieves strain of driving by absorbing and controlling road shocks.
- Counteracts shimmy and wobble of front wheels.
- Fits any passenger car, truck or bus.
- Nothing to wear out quickly or get out of order.
- 100% foolproof. Requires no special care or attention. Low cost.
- Installed in twenty minutes.

Tire Blown Out at 90 Miles Per Hour Amazing Test!



A racing car hurtles down the speedway at 90 miles an hour, with the famous Indianapolis driver, Wilbur Shaw, at the wheel. Suddenly, the mechanic lifts a gun and fires into the front tire. Just as the tire explodes the driver lifts his hands into the air! The crowd gasps—but the car automatically continues in a straight line, controlled by an uncanny "robot"! A crowd approaches. The driver places his hands on the wheel, and though the front right tire is torn to shreds, he easily makes a left turn around the track as 10,000 spectators cheer.

The MACWAYDE STEERING STABILIZER automatically controls steering, prevents dangerous swerving, and always keeps your car true to its course when either front or rear tire blows out or hits a soft shoulder. **YES IT DOES NOT INTERFERE WITH NORMAL STEERING IN ANY WAY!**

Even though you may never have a dangerous blow-out, MacWayde Steering Stabilizer pays for itself because it eliminates shimmying or wobbling, preventing unnecessary wear on front tires and car parts. And relieves driving strain by absorbing and controlling road shocks.

The Greatest Safety Development Since 4 Wheel Brakes

Firestone AUTO SUPPLY & SERVICE STORE
Ninth and Riverside. Phone 520

We'll gladly demonstrate this remarkable safety device to you!