

### COUNTY ENGINEER REVIEWS WORK OF KEEPING UP ROADS

At the Kiwanis meeting Monday noon, Paul Rynning, county engineer, gave a very comprehensive review of the work done by the county court on roads the past ten years and told of the five-year program on oiling roads which began this year.

Mr. Rynning said when he was chosen engineer 10 years ago there were 12 road supervisors working independent of each other and having their separate equipment. Now there are no supervisors, the work being done by three foremen, one man in charge of equipment, and a bridge foreman. The equipment is now all under direction of the engineer and is housed, when not in use, in a modern machine shop near the fair grounds and is under supervision of Tom Roseberry, where all machinery is repaired and some of it is built.

"Of the 200 miles of roads in this county, about 300 miles are summer roads, that are practically impossible in winter and 700 miles of all-year roads," said Mr. Rynning, who continued: "In 1929 the county spent about \$400,000 on road work, while last year it was only about \$300,000 as the commissioners are holding down tax levies. It costs about \$30,000 per year to maintain the county roads. The road tax this year is 1.1 mills and the amount created by this tax, added to about \$63,000 received from the gas tax, together with market road funds, will make about \$100,000 for all road purposes this year after deducting \$15,000 interest on bonds."

The county court has adopted a five-year program of oiling roads which provides for about ten miles per year and more when co-operation is given by the different communities. The oiling to be done all over the county roads without the proper base cannot be done.

"One of the serious problems is to keep the present roads in proper repair, with the limited funds, and some method will have to be arranged soon to create more funds or the road base will be beyond repair."

Jackson county has 760 bridges, large and small, that must also be kept repaired and be replaced when worn out. The life of the average bridge being 15 years. This year we will spend about \$25,000 on 35 bridges.

When asked about the heavy truck loads wearing out the roads, Mr. Rynning said the state police keep in close touch with this problem and find that the truck men generally observe the law, which is a limit of 40,000 pounds.

"It may be news to most of you," said Mr. Rynning in closing, "to know that the fast, light cars are not harder on roads than heavy traffic."

Visitors at the meeting were W. Bennett, past president of the Bremerton club; H. G. Lytton, who recently traded for 80 acres of the Barnett ranch south of the fair grounds east of Bear creek; Herman W. Saunders and Dr. H. W. Call, county judge and Commissioner Caster.

### EAGLE POINT PLANS LOAN FROM PWA TO GAIN WATER SYSTEM

Preliminary steps in the filing of an application through the Public Works Association, of the federal government for a loan of \$10,000 for establishment and construction of a water supply system for the town of Eagle Point will be taken tonight at a meeting of the Eagle Point city council. Passage of a resolution authorizing application for the loan, is scheduled. Legal representatives of Eagle Point in the matter are Neff and Frohmyer of this city.

It is planned to secure the water for the project from the Medford water supply system.

Eagle Point secures its water supply largely from wells and springs at present. Citizens desire a more modern and reliable source. The town has a population of 211, according to the 1930 census. It is now estimated the population is near the 350 mark.

Securing of the water from the Medford supply would have to be approved by the Medford city council and water board.

The plan, if the PWA loan is granted, calls for installation of pipe throughout the town.

The matter of applying for the loan has been under consideration for several months.

### RELIEVE PERIODIC PAIN

THIS medicine eases periodic pain and discomfort. It makes trying days endurable. Mrs. Garvin Burner of Scott City, Kansas, says: "I had such cramps I could hardly stand on my feet. I had severe headaches, dizziness and blue spells. Your Tablets helped me wonderfully."

Sold at all drug stores. Chocolate coated. Trial size only 25 cents.

### Meteorological Report

June 25, 1935  
Forecast:  
Medford and vicinity: Fair tonight and Wednesday; slightly warmer tonight.  
Oregon: Fair tonight and Wednesday, but occasional clouds on coast; slightly warmer in the interior tonight.  
Temperature a year ago today:  
Highest, 70; lowest, 50.

Total monthly precipitation, trace; deficiency for the month, 0.51 of an inch. Total precipitation since September 1, 1934, 16.88 inches; deficiency for the season, 1.51 inches.

Relative humidity at 8 p. m. yesterday, 24 per cent; 5 a. m. today, 95 per cent.

Sunrise tomorrow, 4:37 a. m.  
Sunset tomorrow, 7:50 p. m.

Observations Taken at 5 A. M., 120th Meridian Time

CITY	High Temp	Low Temp	Wind	Weather
Boise	76	50	---	Cloudy
Boston	78	62	T. Rain	---
Chicago	74	64	T. Cloudy	---
Denver	90	56	T. P. Cdy.	---
El Paso	80	59	T. Cloudy	---
Helena	84	52	T. Clear	---
Los Angeles	78	60	---	Cloudy
MEDFORD	83	49	---	P. Cdy.
New York	76	60	---	Clear
Omaha	80	68	08	Cloudy
Phoenix	102	72	---	Clear
Portland	68	74	---	P. Cdy.
Roseburg	84	54	---	Clear
Salt Lake City	76	54	---	Cloudy
San Francisco	72	54	---	Clear
Seattle	64	52	T. P. Cdy.	---
Spokane	72	46	---	Clear
Walla Walla	78	54	---	P. Cdy.
Washington, D.C.	80	58	T. Clear	---

### MRS. POELNITZ SUES FOR POSSESSION OF \$2000 P. O. SAVINGS

Suit seeking a temporary injunction, prohibiting Mathias (Dutch) S. Welch from withdrawal of \$2000 deposited in the postal savings department of the Ashland postoffice was filed late yesterday in circuit court by Mrs. Ada Poelnitz of this city. The litigants are brother and sister.

The complaint sets forth that the \$2000 is insurance money belonging to Mrs. Poelnitz, and she further asks that she be declared its owner.

The plaintiff recites that she gave Mathias S. Welch the key to a safety deposit box in this city and that later Welch deposited the \$2000 in the postal saving department of the Ashland postoffice. The certificates of deposit were "inadvertently destroyed by fire." It is claimed. Application for new certificates has been made and Mrs. Poelnitz alleges Welch has been dilatory about turning it over to her.

Mrs. Poelnitz alleges that unless legally restrained, Welch will remove the money and has refused to get a new certificate under her own name unless given half of the sum, and still refuses to do so. She further charges that she requested Welch to return the safety deposit box key in September, 1932, but he refused to do so. A temporary restraining order prohibiting removal of the money has been issued.

Attorney O. H. Bengston represents the plaintiff in the action.

Miss Fick convalescing—Miss Virginia Fick, who returned to Medford from Seattle about two weeks ago by plane, for an emergency operation for appendicitis, is now convalescing at the home of her parents, 606 South Newtown.

### WAR ON BEETLES SHOWING RESULTS IN ROGUE FOREST

Infestation of the mountain pine beetle in the timber stands along The Dalles-California highway southeast of Crater Lake, where the insect has wrought havoc during the past several years, has decreased rapidly, officials of Rogue River national forest announced late yesterday as the first plans in this year's campaign—that of locating the infested trees—came to a close.

For the past several weeks CCC crews, working under the direction of Laurence V. Espay, EGV foreman, supervised by Norman J. Penick, administrative assistant for Rogue River national forest, have been at work in a spike camp, spotting, felling and limbing the stricken trees.

Next step in wiping out the beetle will depend largely upon the weather, for each log is allowed to lie in the sun with each side exposed in turn, until the bugs are killed by the heat while still at work under the thin bark. If the weather is hot, the forest service expects to complete the project by June 30.

Statistics released today reveal that in 1934 infested trees in this area totaled 9965, while a census taken this year reveals that only 1442 trees have been attacked by the beetle. With a total this year of \$200 acres, the acreage of infestation shows a decrease of 76 per cent.

Officials stated this unusually large decrease is due to the extensive felling of infested trees in a similar campaign last year, which allowed the hot sunshine which prevailed to effectively sun cure large areas.

Foreman Espay reports that the rate of tree curing has been increased from a low of three trees per man per day to eight trees per man per day as the CCC men, all of whom are new recruits from Chicago, have become better trained in the work. Espay stated he has instilled a sense of rivalry among the crews that promotes results.

Majority of the men have been in camp since April, Espay reports, and, despite their ignorance of the woods at first, they have rapidly learned woodcraft and talk in the vernacular of old-time bug hunters. To them a compass is no longer a box with a little swinging needle, trees are felled instead of undermined, and sections, sections corners and quarter corners mark certain areas in the timber that are no longer referred to as so many blocks this way or so many blocks that.

Besides the active "bug brigade," a check cruise is being made in the old infestation along the park boundary, revealing that in places where there were at one time as many as two infested trees per acre, there are now only 40 infested trees on 2000 acres.

Use Mail Tribune want ads.

Laura Gilman is now with Vi's Wave Shop Make this your headquarters for Summer Beauty! DUART PERMANENTS \$2.50 and up Hotel Medford Tel. 1130

Miss Fick convalescing—Miss Virginia Fick, who returned to Medford from Seattle about two weeks ago by plane, for an emergency operation for appendicitis, is now convalescing at the home of her parents, 606 South Newtown.

### BIRTHS

Mr. and Mrs. Ray Ward of Central Point are the parents of a baby boy weighing 8 pounds, 13 1/2 ounces, born this morning at the Community hospital.

A five-pound baby girl was born to Mr. and Mrs. Herbert Hartle of Crater Lake avenue, yesterday at the Community hospital.

R. F. C. Loans Approved. WASHINGTON, June 23. — (AP) — Loans of \$16,000 to the Big Creek Ditch company, Baker county, Ore., and \$32,500 to the Enterprise Irrigation district in Klamath county.

Columbia Dropping. THE DALLES, Ore., June 24. — (AP) — The Columbia river continued to drop today, after reaching a 28-2-foot level last night. Reports from upstream indicated both the Snake and Columbia rivers were dropping there.

Use Mail Tribune want ads.

Use Mail Tribune want ads.

Use Mail Tribune want ads.

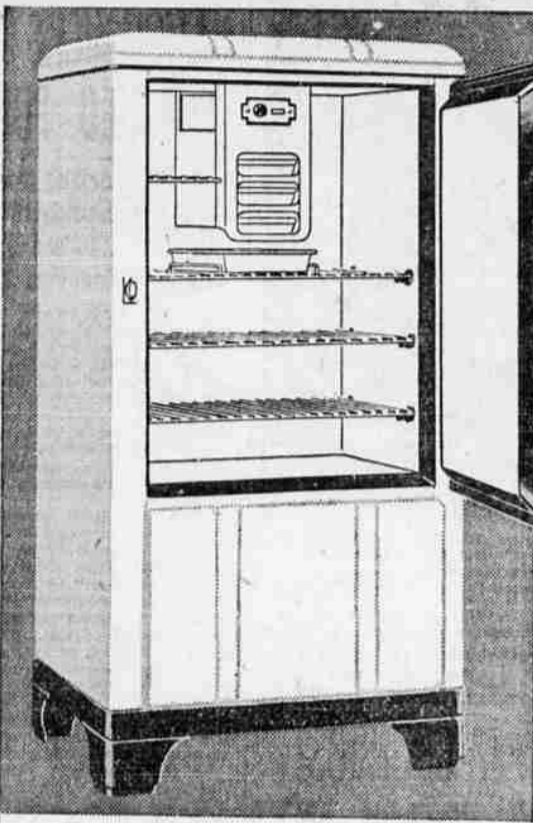
Use Mail Tribune want ads.

Use Mail Tribune want ads.

Use Mail Tribune want ads.

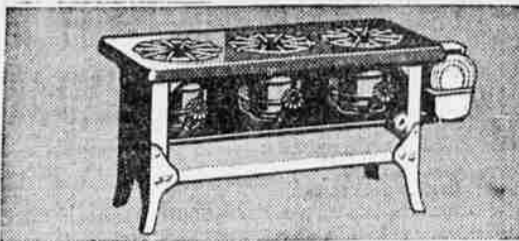
# Summer Comfort For Sale!

## GET WARDS DEPENDABLE QUALITY! SAVE AT WARDS LOW PRICES!



### See Its 14 Late Features

- Super-Powered Compressor—made by one of largest independent makers of refrigerator mechanisms
- Glistening Dupont Dulux Exterior Finish
- Porcelain Interior
- Acid-Resisting Porcelain on Bottom of Food Compartment
- Two-Tone Chrome-plated Hardware
- Cooling Unit has porcelain enclosure
- 8 Freezing Speeds
- Cooling Unit in Top Center—handler shelf arrangement
- Flat Bar Shelves
- Snap-Action Door Latch
- Flat Table Top
- Full Sealed Insulation—efficient
- Glass Defrosting Tray—gives cold storage of extra ice cubes
- Large Ice Capacity



### Wickless! Smokeless! Odorless!

Three wickless burners give a hot blue flame on 9% less fuel than ordinary kerosene stoves! Steel body! Green and black lacquered finish!

# 795

Turner size \$6.25



### Wire-Bound Cedar Tub Retains Cold

# 398

Save money! Buy Wards 4-quart ice cream freezer. Heavily flamed cream can. Churns thoroughly — can rotate, paddle and dasher with the cream.

### One-Profit Distribution Makes Wards Price So Low!

5.65 cu. ft. storage capacity in this Ward Electric Refrigerator, priced lower than smaller models of most makes! 11 sq. ft. total shelf area. 63 full-sized cubes, 5 lbs. of ice! Compare it with other refrigerators. None better made, yet you save up to \$65!

# 124 50

\$5 Down \$5 Monthly Small Carrying Charge



### You Save on Wards Special Quality Washer

# 4495

\$3 Down, \$4 Monthly Small Carrying Charge

More quality features than in other washers priced far higher! Tri-vane agitator, washboard action walls, 6-sheet porcelain tub!



### 8" Stationary Type—Smooth, Quiet Running

# 229

Wards electric fan, priced at a saving! Chromium-plated blades. Wards own modern guard and base design. A buy!

10-in. Oscillating \$4.15



### Cold Pack Canner

# 1.59

Holds 7 qt. or pt. jars. Blue enamel finish on steel. Canning rack, instructions.



### Colorful! Gay! Imported Fibre Rugs

# 495

Heavy fibre rugs, 54-in. by 90-in. Ideal for the porch or the summer cottage. Made to give long, satisfactory service. See the wide selection at Wards — outstanding value.



### Enjoy Summer Comfort in a Couch Hammock!

Compare this value anywhere! Comfortable hammock suspended from sturdy all-steel frame. Covered with duck in bright summer colors and complete with canopy. Save at this price!

# 1995

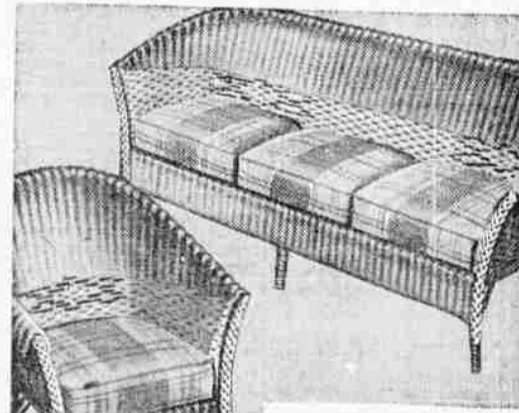
\$3 Down \$4 Monthly Small Carrying Charge



### Electric Whipper

# 1.98

Modern design with on-and-off switch, green and ivory finish. 16-oz. glass bowl.

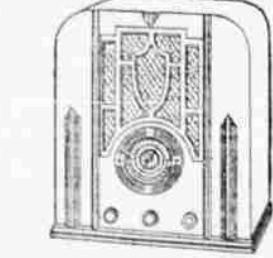


### Two-Piece Fibre Suite for Sunroom or Porch

Famous Lloyd Loom woven fibre with all-steel supports. Sturdy steam-bent hardwood frame finished with weather-proof enamel in cheerful summer colors with contrasting trimming.

# 2995

\$3 Down \$3 Monthly Small Carrying Charge



### Compact Radio

# 24.95

\$3 Down \$4 Monthly Small Carrying Charge

World range at a little price! 1935 features! modern styling. A Ward value!

### Ride High—Pay Low!

#### CANADIAN ROCKIES ALLEXPENSE TOURS



### Banff Lake Louise Emerald Lake

This summer take one of these All-Expense Tours—plan your vacation on the sky-line of the Canadian Rockies, with never a dull moment for anyone of the family. In this great scenic wonderland there are crystal-clear lakes, great rivers, snowy mountains and gleaming white glaciers; horses to ride, with cowboy guides, play mile-high golf, go swimming and hiking. Dine and dance at baronial Banff Springs Hotel, Chateau Lake Louise and Emerald Lake Chalet—motor along the most awe-inspiring sky-line on the Continent.

**6 WONDERFUL DAYS—**  
With 2 days at Banff Springs Hotel; 2 days at Chateau Lake Louise; 1 day optional Banff or Lake Louise; 1 day Emerald Lake Chalet. Tour of Banff, Side trip to Moraine Lake. All-Expense, including 120 miles of motoring. \$70

**4 COLORFUL DAYS—**  
With 2 days at Banff Springs Hotel; 2 days at Chateau Lake Louise; Side trip to Moraine Lake. Visit at Emerald Lake with lunch at Emerald Lake Chalet. All-Expense, including 120 miles of motoring. \$55

Tours begin at Banff or Field. Each includes motor tour, hotels, meals, rooms, motor transport. Purchasers of these tours may extend stop-overs at hotels on a minimum rate for room and meals, by applying to management where stop-over is desired. Add Rail Fare from starting point. Banff Springs Hotel open June 16 to Sept. 10; Chateau Lake Louise—June 21 to Sept. 10. Reduced Summer Round Trip Fares (good return—Oct. 31). Also Short-Limit Round Trip Rail Fares. All particulars and bookings at our local offices below.

CANADIAN PACIFIC HOTELS  
W. H. DEACON, General Agent Passenger Department, 625 S. W. Broadway  
(American Bank Bldg.) Telephone BRoadway 0657, Portland  
CANADIAN PACIFIC TRAVELLERS CHECKS GOOD THE WORLD OVER

117 SOUTH CENTRAL  
TELEPHONE 286

# MONTGOMERY WARD