

# Floors Among First Items Needing Attention in Home Repair List

**CHOICE OF WOODS, CAREFUL WORKERS MAIN REQUISITES**

Material Available in Many Qualities and Grades to Fit Any Pocketbook—Hardwoods Most Common

Home owners taking advantage of the National Housing Act to modernize and repair their properties should give due consideration to floors. Too great care cannot be given to the selection of materials and workmanship in laying and finishing this part of the house.

Generally speaking hardwood floors are intended to be finished to display the natural beauty of the texture and grain of the wood. A transparent finish is commonly used to permit the natural beauty of hardwood to remain visible, while in other cases the floor is stained to obtain desired interior decorative effects.

Softwood floors are sometimes given a natural or stained finish to display the patterns made by the alternating bands or springwood and summerwood growth. Often softwood floors are painted or covered with carpets or used as a base floor for other types of flooring materials.

Hardwood used Among the hardwoods most commonly used for flooring are white oak, red oak, hard apple, birch and beech. The ring-porous growth of oak gives beautiful textural and grain effects in plain-sawn flooring while the "silver flakes" on the surface of quarter-sawn white oak flooring are highly prized for their beauty and charming effects.

Douglas fir, southern yellow pine, hemlock, white pine, ponderosa pine and larch are among the most commonly used softwoods used for flooring. The softwoods do not have textural patterns of pores, as in the case of oak, but derive their grain effect from the harder, denser summerwood which offers contrasting effects with the lighter-colored and softer springwood. It is the difference in hardness between the summerwood and springwood that makes the edge or vertical grain softwood flooring preferred to plain-sawn softwood flooring, especially where the floor is subjected to hard usage.

Strip Floors Common Strip flooring is the most common type of wood flooring. Hardwood strip flooring usually has a narrower face than in the case of softwood flooring and is side and end matched to make a sound, tight and strong floor. Softwood strip flooring is side matched and is now available end matched. In addition, wood flooring is available in different qualities or grades and of different prices so that there is a kind and quality suitable for every degree of beauty, service and "pocketbook."

Novelty wood floors are in common use for those who wish variations from strip flooring.

## NEW SCREEN DOOR LESS UNSIGHTLY

The modern trend in decoration has been felt in almost every part of the home, but the old-fashioned screen door is generally left as a not too slightly reminder of the days that were. If, to enter a charmingly appointed home, one must pass through an unsightly screen door, more than half of the effect of the interior is lost on the guest. Certain decorators have made a particular effort this Spring to modernize this necessity to comfort. Screen doors are suggested with the lower half of thin wood and the upper half wire netting, conforming, of course, to the general architecture of the house. Others have a fine latticework of wood, while still others effect a modern design with fine wooden pieces set in geometric fashion, wire netting forming the remaining surface.

## FIREPLACE POPULAR DECLARE REALTORS

Real-estate agents say that one of the most frequently requested features when a prospective tenant searches for either apartment or house is a fireplace. Perhaps there is a magical charm in the thought of a family hearth. Surely from a purely decorative point of view there are few rooms that cannot be improved by the addition of a fireplace.

Made of brick or stone, depending on the character of the room, it presents a center about which to group furniture. It frequently proves a strictly practical feature as well, offering just enough warmth to take the chill out of the room when the heat of a furnace would be too much.

## SAFETY INSURED BY REWIRING RESIDENCE

The insulation on electric wires laid under rugs receives considerable wear, and may break and result in a severe and dangerous fire. Such danger can be largely eliminated by rewiring the home to provide for a sufficient number of outlets for all lighting and power accessories, including lamps, radio, toaster, and other appliances.



### No Finer Quality Porcelain Enamel or China! All Chrome-Plated Fittings!

No wonder it is our most popular outfit! See what the low price buys! Take advantage of its low price now, enjoy its convenience for years.

Pieces Also Sold Separately:

Tub, \$21.95 Lavatory, \$9.25 Closet \$12.95

**4125**  
\$5 Down  
\$5 Monthly  
Small Carrying Charge

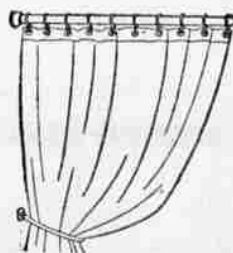
- Roomy tub. Porcelain enameled inside and over rim!
- Quiet closet with flat shelf top tank!
- Modern style lavatory!



### Modern Shower with Adjustable Head—Save!

**349**  
Frame  
24x30 in.

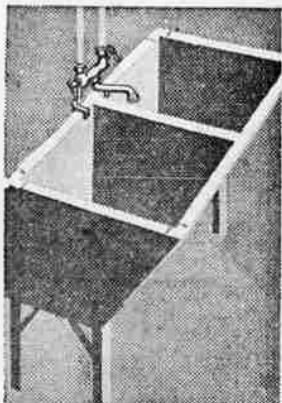
Large oblong frame for more room! All chrome plated for long wear! 5-ft. rubber tube with connection for faucet! Unusually low priced! Save!



### Shower Curtain

**1.59**

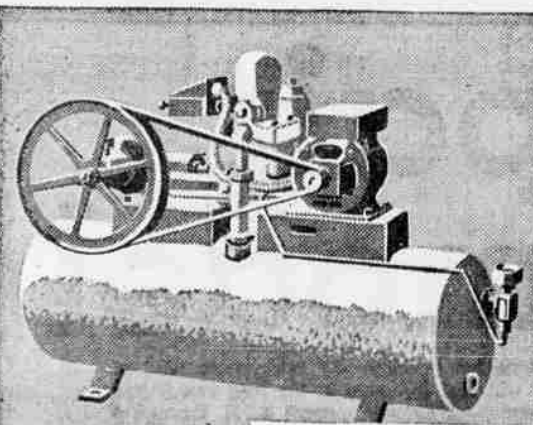
Cravenetted to resist water and mildew. Fine cotton broadcloth 6'x6', in colors.



### It's Leakproof! Reinforced Metal Rims—

**1245**  
With Fittings

Clothes are safe from tearing in this seamless one-piece tub of granite composition. Edges metal bound! It's just the right proportions for easy laundering! See the low price!



**5095**  
\$5 DOWN  
\$6 Monthly, Small Carrying Charge

### All the Water You Need for a Few Cents Daily!

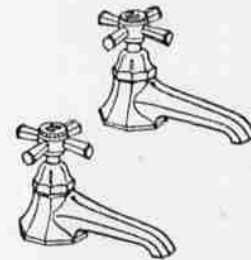
Completely automatic! 250 gallons an hour! 18-gallon storage tank and pump galvanized inside and out! Finest type pump and motor! Maintains city pressure! For wells 22 ft. deep or less.



### Sink Mixing Faucet

**3.45**

Heavy cast brass plated with tarnish-proof chromium . . . . . easy to keep clean! Save!



### Lavatory Faucets

**2.98** Per Pair

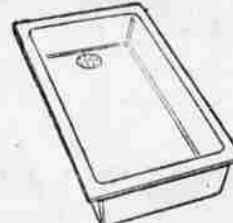
Art-line designed! Smart flat surfaces. Heavy cast brass . . . . . radiant chrome finish!



### Big Kitchen Pump

**3.35**

Attractively painted heavy cast iron. Has 3/4-inch brass lined cylinder.



### Cast-Iron Sink

**3.85** Less Fittings

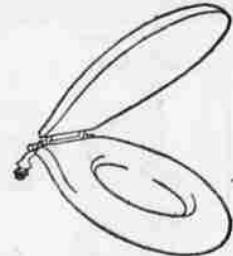
18-in. by 30-in. One piece. First quality porcelain enameled inside, over rim!



### Pipe Fittings

**3c to 60c**

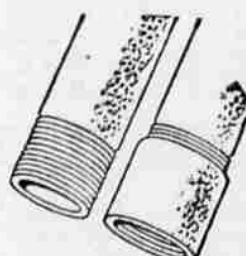
No finer galvanized pipe fittings made! All types. Save at Wards low prices!



### Toilet Seat

**1.98**

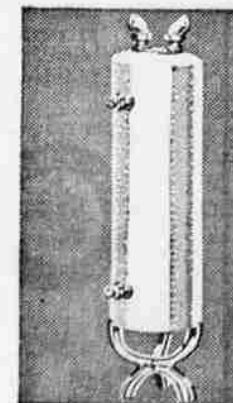
Warp-proof, crack-proof hardwood! Mahogany finish or varnished oak!



### Galvanized Pipe

**8c** Per Ft.

3/4-in. pipe No finer made! Tested to 700 lbs. pressure per square inch. See Wards low price!



### Pressure Tested to Twice Needed Strength!

**1075**  
Complete STANDARD  
30-Gal. size

They are hot-dip galvanized inside and out, the best known method for preventing rust and corrosion. Save!

## WARDS PAINTS

TESTED QUALITY!—LASTS LONGER—COSTS LESS!

### A New Super House Paint

**3.00**  
Gal.

We wanted you to be able to buy at Wards the finest house paint made . . . and here it is! A 4-year test with 43 of the best paints in America proved that only one (much higher priced) equalled Super House Paint in any way! Come in! Ask us for details!



#### Amazing Facts!

Three large paint manufacturers maintain experimental stations where every known paint is tested by exposure to weather. Here are paints made of all the old formulas as well as paints made from new materials and by new formulas. Our paint chemists, always searching for the newest and best, studied these tests.

Among all these paints, tested under identical conditions, just one was outstanding. After 4 years' exposure the paint film was smooth, unbroken and beautifully white. It contained a new material, Titanium Dioxide, skillfully balanced with White Lead, Zinc Oxide and Asbestine. Wards have made Super Paint to the same formula. There is only one difference: Wards low price!

### 100 Lbs. Finest White Lead

Contains 89% pure lead carbonate, 9% raw Linseed Oil . . . 2% pure gum turpentine! Compare this formula! Compare prices! See what you save at Wards!

**1025**

Raw Linseed Oil Best! Bring your container. Gal. **\$1.10**

Pure Gum Turpentine Best! Bring your container. Gal. **\$1.00**

Special Barn Paint Fine as house paint! Red! Gal. **\$1.60**

Asbestos Roof Coating Liquid! Stops roof leaks! Black. 5 gal. **\$3.50**

Floor & Porch Enamel Our best! 4 hour drying. Quart. **79c**

Implement Paint Prevents rust and rotting\* Quart. **68c**

Zinc-Ite House Paint First quality at a new low price! Gal. **\$2.40**

4" Paint Brush Bristles will not come out! Value! **90c**

Certified Kalsomine Won't rub off! Velvet finish. 5 lbs. **50c**



Floor Varnish **3.50** Gal.

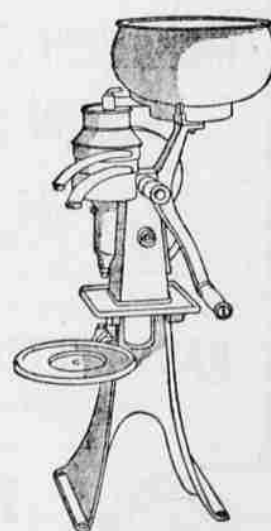
Wards Marproof! Quick dry! Brilliant finish! Unusually tough! Easy to apply! Save!

Semi-Gloss Paint Overall. For kitchen, bath. Quart. **63c**



Coverall Varnish **1.85** Gal.

Gives a clear, high gloss finish for floor and trim! Priced to save you money!



### Save on Wards Royal Blue Separator

**4995**

\$5 Down, \$5 Monthly Small Carrying Charge

Today's outstanding value! Every part built for close-skimming efficiency! Heavy, smooth-surfaced tinware throughout—every piece easily and quickly cleaned! Easy to turn—easy to keep in order. See it today!

- Alloy Bearings Resist Wear
- Closely Machined Gears
- Smooth, Quiet Operation
- Self-Lubricating System
- Skims 500 Lbs. Milk per Hr.



**315**  
90-Lb. Roll  
Covers 100 Sq. Ft.

### Superslate Roofing Is Year 'Round Protection

No weather is severe enough to affect this toughest of roll roofings. Fire-resistant—labeled by Underwriters! Crushed slate embedded in asphalt gives it long life! Bright new colors.



117 SOUTH CENTRAL  
TELEPHONE 286

# MONTGOMERY WARD