

YEARS ACTIVITIES OF HEALTH ASSN. SHOWN IN REPORT

646 Smallpox Vaccinations, 284 Diphtheria Immunizations Given — Entire County Well Organized

Seeking better health for Jackson county has been the work of the Jackson County Health Association during the year just closed, and in an annual report released today, the organization lists many gratifying activities and accomplishments.

Under officers of the health association proper—Miss Mildred Carlton, president; Mrs. Fred Wagner, vice-president; Mrs. Lewis Ulrich, secretary, and Mrs. J. C. Wellis, treasurer—work of the organization in bettering health conditions throughout the county has been affiliated with that of the Jackson county board of health and the Jackson county health department.

List General Activities.

In general activities of the health association, the report reveals that the organization has:

Held five bi-monthly meetings with average attendance of 65; sponsored six talks by Jackson county physicians on special subjects for child health week (six physicians gave radio talks on diphtheria immunization and six wrote articles for the newspaper on the subject); financed 77 dental clinics with 940 children treated, nine helpers giving 231 hours in assisting the dentists; sponsored 12 talks by the president; sent five delegates to the state tuberculosis meeting at Pendleton; transported children from rural communities to the Dillehunt-Dixon clinic; offered a study course for several community groups and P. T. A.'s which studied throughout the year; conducted a membership drive during May.

In general activities of the health department, the report shows that this department has:

Conducted 646 smallpox vaccinations and 284 immunizations for diphtheria; examined 68 children and adults at special tuberculosis clinic; examined 63 children at Dr. Richard Dillehunt's clinic for crippled children; examined 99 children at Dr. H. Dixon's clinic for handicapped children; tested 4400 children for hearing; examined 434 babies at 46 baby clinics; sponsored 17 talks by the health officer and 22 talks by the county nurse.

Entire County Active.

Besides Medford, combined activities of the health association, the Jackson county board of health and the Jackson county health department are carried on in Ashland, Prospect, Eagle Point, Rogue River, Gold Hill, Central Point, Jacksonville, Oak Grove, Sams Valley, Phoenix and Talent, the report reveals.

Officers of the health association are assisted by members of the executive committee: Mrs. Leonard Carpenter, nurse; Mrs. Alex Sparrow, finance; Mrs. I. E. Schuler, publicity; Mrs. Charles Taylor, supply; Mrs. R. E. Green, education; Mrs. Moore Hamilton, Mrs. Jack Heyland, Mrs. Robert Hart, Mrs. Robert Brown and Mrs. Elwood Hedberg.

Members of the Jackson county board of health are: Eugene Thorndike, chairman; Dr. C. H. Paske, Thornton Wiley; C. R. Bowman, Ralph Billings, Miss Mildred Carlton and Dr. A. F. W. Kresse.

In the Jackson county health department are: C. I. Drummond, M. D., health officer; Miss Blanche Hunsler, R. N.; Miss Stuy Walker, R. N.; and Miss Josephine Koppes.

Cooperation has been reported from

DUST BELT TOUR IS DESCRIBED AT ACTIVES MEETING

Fire Chief Roy Elliott, but recently returned from a motor trip to the middle west, was main speaker at the regular meeting Tuesday at the Hotel Medford of the Active club. He described the incredible conditions occasioned by the recent dust storms in that district.

The fire chief said that a dust storm had to be seen to be believed, and related incidents to illustrate that point. In one little town, Colby, Colorado, it was impossible to see neon signs burning across the street. Normally the town has a population of about 750, but dust storms held up so many at that point, that at one time there were over 1500 people in the place.

On the return trip Mr. and Mrs. Elliott encountered floods, to make their trip a complete success. The nice part of the jaunt, Elliott told the Actives, was getting back to Oregon, where the climate has no extremes.

During the regular business meeting of the club it was announced that definite arrangements will have been made by Tuesday for the joint social gathering with the Ashland Actives. The committee working on the social is headed by Foster Cone, with Eugene Dowling, Frank Bash and Lea Weisenberger serving with him.

The convention committee reported that they are busy in plans to bring the 1935 international convention to Medford.

OFFICERS NOMINATED BY AMERICAN LEGION FOR DUTY NEXT YEAR

Nomination of officers for post No. 15 of the American Legion here, with many names having been submitted on Monday night's meeting, will be continued at the next meeting night, Monday, June 24, according to word released today. Those nominated Monday were: Commander, Cole Holmes; first vice-commander, W. G. Averill; second vice-commander, Morris B. Leonard; chaplain, A. J. Anderson; adjutant, Joe Pileggi and Fred Fry; historian, Col. W. H. Paine.

Those nominated for the executive committee were: L. C. Garlock, P. W. Scheffel, Geo. A. Codding, Edw. Leach, Warren Butler, Cass Wynore and Russell Semon.

Elections will be held on the first meeting in July. Medford Voiture 40 and 8 are holding installation of their newly elected officers at Ashland Legion hall, on Saturday evening, June 22. A real stag party is planned, and all 40 and 8ers are asked to be present, and to bring a good Legionnaire. Tickets may be procured from Russ Semon.

OPERATOR'S LICENSE APPLICANTS AT M-T

A supply of Oregon motor vehicle operator's manuals and motor vehicle operator's license renewal blanks has been received and will be distributed to the public free of charge at the Mail Tribune offices on North Fir street.

Contained in the manual is complete information concerning the procedure of licensing automobiles, the issuance of drivers' licenses and an abbreviated form of the motor vehicle laws compiled by the secretary of state.

DUST BELT TOUR IS DESCRIBED AT ACTIVES MEETING

Fire Chief Roy Elliott, but recently returned from a motor trip to the middle west, was main speaker at the regular meeting Tuesday at the Hotel Medford of the Active club. He described the incredible conditions occasioned by the recent dust storms in that district.

The fire chief said that a dust storm had to be seen to be believed, and related incidents to illustrate that point. In one little town, Colby, Colorado, it was impossible to see neon signs burning across the street. Normally the town has a population of about 750, but dust storms held up so many at that point, that at one time there were over 1500 people in the place.

On the return trip Mr. and Mrs. Elliott encountered floods, to make their trip a complete success. The nice part of the jaunt, Elliott told the Actives, was getting back to Oregon, where the climate has no extremes.

During the regular business meeting of the club it was announced that definite arrangements will have been made by Tuesday for the joint social gathering with the Ashland Actives. The committee working on the social is headed by Foster Cone, with Eugene Dowling, Frank Bash and Lea Weisenberger serving with him.

The convention committee reported that they are busy in plans to bring the 1935 international convention to Medford.

ELECTRIC ICE BOX HELP TO HOSTESS

Some women seem to dread the ordeal of entertaining guests, while others really enjoy giving dinner parties, luncheons and teas.

It's easy to gain a reputation as a good hostess when one has an electric refrigerator to help entertain. Dozens of delicious salads, frozen desserts and dainty ices are so simple to prepare in an electric refrigerator and all foods can be preserved in such excellent condition. There is never any worry or doubt whether refreshments for a party will keep properly until ready to be served and a plentiful supply of ice cubes for cooling beverages is always on hand.

To attain a reputation as a perfect hostess, the first step is to acquire an electric refrigerator. Many new and attractive models with all the

Need Permits For Gasoline Refunds

SALEM, Ore., June 13.—(AP) Claimants for gasoline tax refunds must obtain permits from the secretary of state at a cost of 50 cents, under a new law which will become effective July 1. The state department today sent out 7500 application blanks to active claimants. Refunds have averaged in excess of \$700,000 a year.

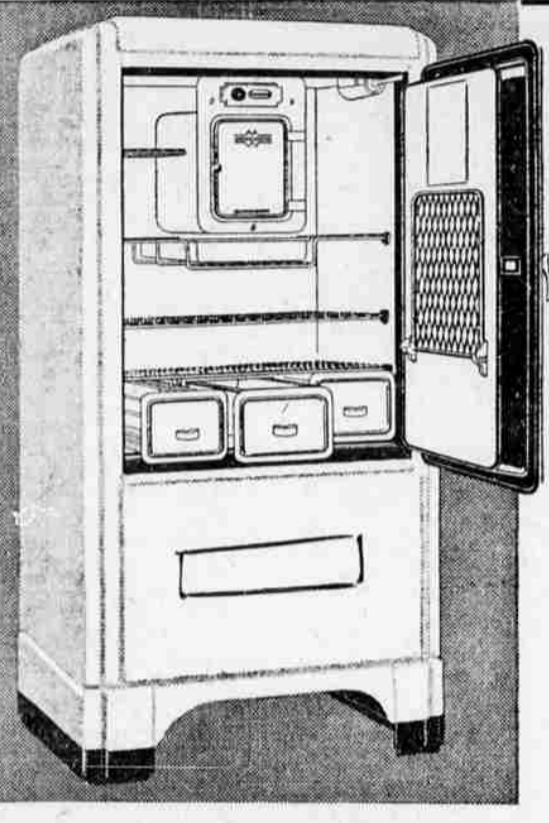
DANCE
At Bonney's Grill, Saturday night.

OPPOSE MT. ADAMS AS NATIONAL PARK AREA

HOOD RIVER, Ore., June 13.—(AP) A resolution condemning the proposal to convert the Mt. Adams area into a national park has been adopted by the Glenwood, Wash., women's club. The women declared the plan would work adversely to the interests of those residing adjacent to such a park.

PARADE OF VALUES

HURRY! ONLY 2 MORE BIG SUMMER SELLING DAYS! SAVE!



Get These 20 Late Features

- Classified Food Storage—3 handy drawers
- Rearrangement Tray
- Handy Dairy Drawer
- Easy-Out Ice Tray Release
- Interior Light
- Large Ice Capacity
- Vegetable Freshener
- Cooling Unit has Chrome-Plated Enclosure
- 8 Freezing Speeds
- Handy Lift Shelf
- Porcelain Interior
- Acid-Resisting Porcelain on bottom of food compartment
- Twin Cylinder Super-Powered Compressor
- Shelf-X, Non-Tip Shelves—flat surface
- Self-Closing Door on Cooling Unit—two-tone chrome
- Rubber Ice Cube Tray
- Chrome-Plated Hardware—smart, modern design
- Full Sealed Insulation—very efficient
- Flat Table Top
- Economy Drawer

No Better Refrigerators Made Than New 1935 Wards!

In actual test Wards Electric Refrigerator produced ice in 120-degree room temperature with low running time! Model shown has 6.35 cu. ft. capacity, 13.65 sq. ft. shelf area. Makes 84 full-sized cubes, 5 lbs. ice! Compare! You save up to \$75!

159.95
\$6 Down
\$6 Monthly
Small Carrying Charge

7.44 Cu. Ft. Refrigerator.....\$179.95
4 Cu. Ft. Refrigerator.....\$104.95

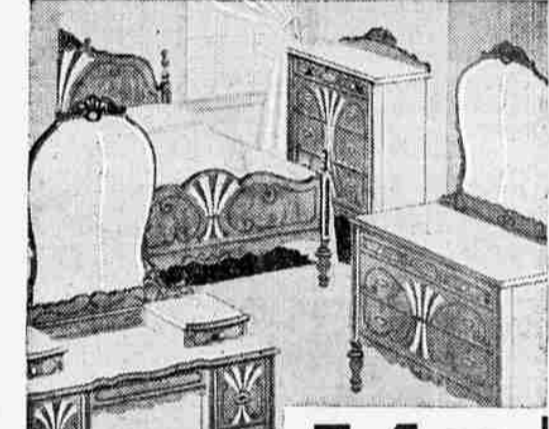
Free installation and standard one year guarantee



54.95
\$5 Down
\$5 Monthly
Small Carrying Charge

2-Pc. Rayon Tapestry Suite —Walnut Finish

Wards huge furniture volume makes this low price possible! Upholstered in rayon tapestry and with fancy drop carvings and carved Queen Anne legs. Comfortable web bottom construction.



54.95
\$5 Down
\$6 Monthly
Small Carrying Charge

Three Handsome Pieces In Walnut Veneer

5-ply veneer tops, fronts and bed panels—3-ply ends. Two-tone design outlined in gold striping. Note the elaborate wood carvings. Bed, chest, choice of vanity or dresser.



12.95

Innerspring Mattress With 169 Wire Coils

One of our best numbers! 169 best quality wire coils; upholstered with felted cotton liners; 4 side handles; quilted Sisal insulator pads top and bottom.



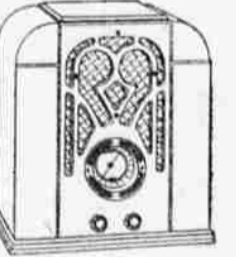
Antique Walnut 7.45
Comfortable walnut finished chair covered with rayon or mercerized tapestry. Save!



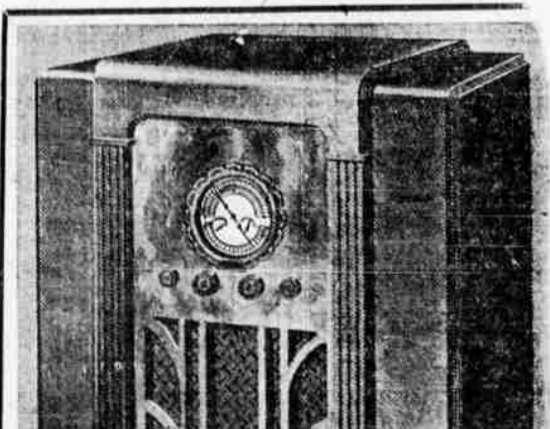
Table Lamps 1.98
New mirror base lamps. Choice designs. Smartly decorated shades.



Walnut End Table 3.98
25 in. Overall
5-ply walnut veneer top, 2 1/2 13 1/2-ply ends. Three shelves and 2 magazine pockets.



1935 Mantel Radio 20.95
8-tube mantel model. Broad cast band—puller coils. Compare with sets 1-3 to 1-2 more.



42.95
\$5 Down
\$5 Month
Small Carrying Charge

New Radio! Sale!

Newest world-range radio: new-type performance, handsome cabinet, fast tuning, famous Ward tone.

- Extra Quality—Extra Features!
- Extra Powered for World Range!
- Licensed by RCA and Hazeltine!



Heavy Awnings 1.49
Gay orange, green and white pattern on close woven drill cloth! Sunfast! Low priced!

Just a reminder!

OLD QUAKER BRAND STRAIGHT WHISKEY

75c PINT
Code No. 136C (Rye)
Code No. 137C (Bourbon)

\$1.45 QUART
Code No. 136A (Rye)
Code No. 137A (Bourbon)

OLD QUAKER
STRAIGHT WHISKEY

ALSO **OLD QUAKER DISTILLED GIN**
95c FIFTH No. 501B 60c PINT No. 501C

ONE SERVICE ALL THE WAY to Europe

From train-to-ship... 30% less ocean... two delightful days down the St. Lawrence... frequent sailings from Quebec by Empress of Britain and Empress of Australia... from Montreal by Duchesses and Monthlies.

ENGLAND
Sail to Southampton, Liverpool and London... the Shakespeare country... Stratford-on-Avon... Windsor Castle... Canterbury... Kentworth.

GERMANY
Service direct to Hamburg, land of the Rhine... Dresden, and treasures Heidelberg, Karlsruhe, Cologne, Bonn, Düsseldorf, Neckar Valley.

SCOTLAND
Sailings direct to Glasgow... see the Scott and Burns country... Cumberland Lake district... Loch Lomond, Melrose Abbey, Abbotsford.

FRANCE
Cross to Cherbourg or Havre, then to Paris... Arch of Triumph, Notre Dame, The Louvre, Versailles... Belleau Wood and Chateau Thierry.

IRELAND
Sail direct to Belfast on the Emerald Isle... Lakes of Killarney, Muckross Abbey, Cork, Blarney Castle, Limerick, River Shannon... Dublin.

Low Round Trip Rates, 1st, Tourist and 3rd Class. All details, ship plans, literature, at our offices... W. H. Deacon, Gen'l Agt. Pass's Dept., 220 S. W. Blvd., (Amer. Bank Bldg.) RR. 6617, Portland.

Canadian Pacific