

AUTOMOTIVE NEWS

PLYMOUTH ENGINE IN NEW AIRPLANE

A small airplane, flying over Marshall, Mo., in a series of successful tests this week, presaged the production of low-priced planes with standard automobile engines.

A two-place, high-wing monoplane, the little ship was powered with a regular Plymouth engine, which performed perfectly as the plane went through its tests.

As the result of the tests, the United States department of commerce placed an order for another Plymouth-powered ship to be constructed immediately. The order was placed through the Amplex Division of Chrysler Motors.

The new ship will be priced much lower than the average plane on the market today. It was pointed out that it also will offer lower maintenance and replacement costs because engine parts will be available at automobile dealers.

The plane is capable of a maximum speed of 120 miles an hour and a cruising speed of approximately 100 miles an hour. It has dual controls for instruction purposes.

The plane weighs 1,078 pounds, minus gasoline, water and oil. It is equipped with a Plymouth instrument panel. The automobile instruments have been converted for aircraft use.

The engine in the plane is a standard six-cylinder Plymouth motor, developed by Chrysler engineers. It was selected after an investigation of other automobile engines, because of its favorable power-weight ratio. This engine has high pressure lubrication, a feature that keeps it in perfect operating condition at sustained high speeds and makes it particularly desirable for aircraft use.

STATES REGULATE SCHOOL CARRIERS

WASHINGTON, D. C., May 25.—(Epl.)—Protection of lives of school children particularly when being transported in school buses to and from their classes, has received widespread consideration from state legislatures holding sessions during the early part of this year, the American Automobile association reported today.

Based on its statement on a recent survey of legislative trends, the national motorists group said that some 25 bills dealing specifically with the question of providing safety for passengers in school buses have been introduced in state legislatures during recent or current sessions.

"The importance of this subject," said Thos. P. Henry of Detroit, Mich., president of the A. A. A., "can be readily appreciated when we remember that 98,000 buses transport nearly 2,500,000 children daily to and from consolidated schools throughout the country."

"Most of the measures introduced in the state legislatures are designed to prevent danger of collision of a school bus with other vehicles or to

FINE MUSIC FOR SAN DIEGO



Five Coast symphony orchestras will play from the Ford Bowl at the San Diego Exposition in a ten weeks' engagement according to C. A. Bullwinkel, Richmond branch manager Ford Motor Company (right above). He is shown shaking hands with Alfred Hertz, conductor of the San Francisco Symphony Orchestra, following his signing of contract with Ford Motor Company for two weeks' appearance of his orchestra at San Diego.

build safety into the school bus itself. While some of the proposals may be impractical, the objective itself is entirely unobjectionable.

"A bill introduced in Maryland would require all motor vehicles to stop behind school buses loading or unloading passengers, while similar measures advanced in Oregon and New Hampshire would compel vehicles to slow down when passing a stopped school bus.

"Nearly all states have measures requiring school buses to come to a complete stop at grade crossings.

"The greater portion of other pending legislation deals largely with construction of safety features into the school bus. Kansas, North Carolina and North Dakota propose compulsory safety glass in all school buses; Georgia and Iowa propose safety glass and steel construction of the bus and Indiana proposes safety glass, steel construction and regular inspection by traffic authorities. Thirteen states already require inspection.

"Bills introduced in Indiana, Kansas, New York, Ohio and Utah would require school buses to be painted red, white and blue, so that they would be easily recognizable.

"The matter of providing insurance for school buses has received, and is continuing to receive, attention by legislatures. Compulsory insurance for school buses has been proposed in Ohio and Vermont. Eight states already require the carrying of such insurance.

"A. A. A. schoolbus patrols throughout the country have been successful

in reducing to a minimum accidents to school children while walking to and from school. If school age children are to be given the fullest kind of protection nation-wide steps must be taken to provide freedom from danger for those youngsters who depend upon the school bus for their daily transportation."

As a result of the benefit smoker held last Thursday night by Medford Elks' lodge, "VI" Beach, seriously injured in an auto accident on the Jacksonville highway, received a substantial sum. The exact amount was not made public but was said to be in the neighborhood of \$200. A check was presented to Beach at his home in Jacksonville by Exalted Ruler H. N. Butler, E. C. (Jerry) Jerome, general chairman of the smoker, and Secretary Ernest Scott.

The benefit smoker was sponsored by the Elks' lodge, with CCC members as consultants.

"VI" Beach for many years has acted as timekeeper at local wrestling bouts.

DR. I. H. GOVE now located at 419 Medford Building.

BIG AIR SHOW TO BE HELD AIRPORT ON MEMORIAL DAY

Memorial Day in this city will be celebrated with a big air show, according to Tom Culbertson, manager of the Medford airport. The program will start at high noon, when roses will be sprinkled over the cemetery in honor of Newell Barber, Medford ace killed during the World War.

At two o'clock the crowd will assemble at the airport for the arrival of the giant United Airlines plane from the south. Bomb dropping will follow. This bomb will be exploded from the air in close enough proximity to the airport so that the people will be able to see it plainly, while being in no danger.

At 3 o'clock spot landings, one of the most difficult feats to be performed with an airplane will be featured, followed by stunt flying. Three flyers will participate in this. Culbertson, Arney and Jerry "Diavolo" Smith.

Smith, who received his transport license only Friday, is a stunt flyer of repute, having flown with the Flying Fleet as a barnstorming mate of Clyde Pangborn, the man who flew the London-Melbourne air race with Roscoe Turner. The "Diavolo" has made over 300 parachute leaps during his career, and he will wind up the day's performance with one of his famous bullet drops.

Also featured on the stunt program will be formation flying, loops, spins, barrel rolls, snap rolls, wing overturns, intentional turns and various other maneuvers.

Passengers will be carried from the airport throughout the day.

TRAPPED SLAYER OF WIFE, SUICIDES

TACOMA, Wash., May 25.—(AP)—A three-day "shoot to kill, if necessary" search for Jack Higgins, 45-year old barber of the Elma-Oakville district, who shot and killed his divorced wife last Wednesday, ended today in his suicide.

He had been wounded by a posse of men led by Sheriff Jeff Bartell of Montesano, when they came upon him in one of the outbuildings of Mrs. Higgins chicken ranch and he resisted arrest. When the men reached him, he had cut his throat and died shortly.

His former wife, Stella, 35, was shot down at the ranch home as she ran toward a neighbor's place.

BIRTHS

Born to Mr. and Mrs. W. M. Quackebush of route 3, a baby girl, weighing eight pounds, May 18 at their home. She was named Eryn Lee.

Mr. and Mrs. V. I. Ekin of 103 Mistleton street are the parents of a baby boy weighing eight pounds and seven ounces, born Wednesday evening at their home.

At the Stated Chapter meeting 7:30 P. M., May 27th steps will be taken to complete the organization and application for a Consistory at Medford. Also an interesting talk will be given by Dr. I. D. Huskeep.

L. E. WILLIAMS, Secty.

COAST SHIPPING HIT BY STRIKES

Pacific coast trade and industry showed good gains with wholesale and retail trade strong. A seasonal lag in inter-coastal shipping was accentuated by strikes. Foreign commerce was reported well ahead of last year.

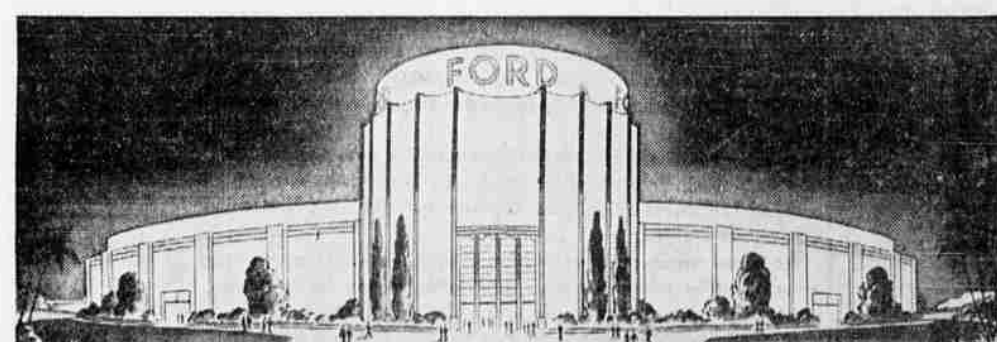
Home portraits of family groups and children at Special Prices. Stangle Studio, Phone 1308.

GEORGE WITTERS WAS NOT ONE ARRESTED

George Witters of this city is busy convincing his friends that he was in Wood last Saturday night and that the George Witter who enlisted a plea of guilty to a charge of driving while intoxicated is an entirely different person. Mr. Witters says the constant explaining is going to delay the opening of his new grocery store on East Main street.

Home portraits of family groups and children at Special Prices. Stangle Studio, Phone 1308.

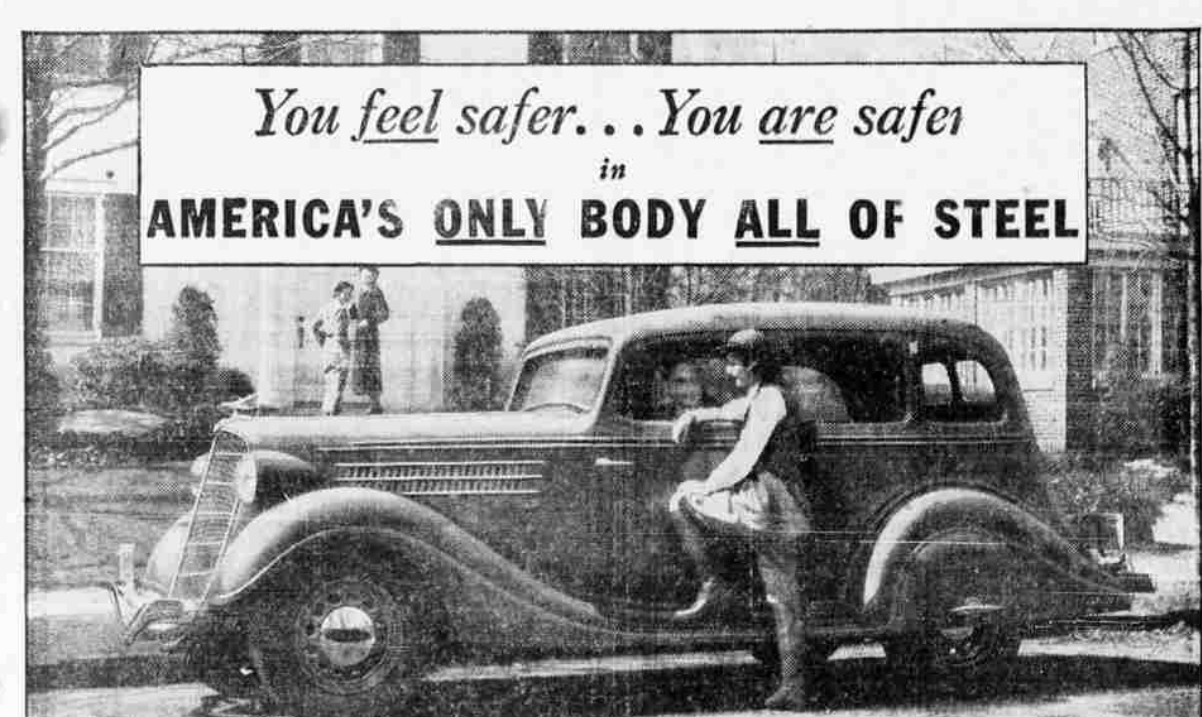
VISIT THE FORD EXHIBITION AT THE CALIFORNIA-PACIFIC INTERNATIONAL EXPOSITION SAN DIEGO MAY 29 TO NOVEMBER 11



THE Ford Motor Company invites you to visit its exhibition at the California-Pacific International Exposition, opening May 29 at San Diego. The theme of this exhibition will be "From Earth to Motor Car." Scores of moving, working exhibits will tell the story of Ford methods and give you a clear and fascinating picture of a modern automobile. It is seldom that so much of the panorama of Ford activities is presented beneath a single roof. We believe you will find it one of the outstanding points of interest at this splendid San Diego Exposition.

FEATURES OF THE FORD EXHIBITION

- CENTRAL BUILDING** - The Ford Exhibition is housed in a large, circular building of striking modern design. The natural beauty of San Diego forms an imposing background. To the south are the blue waters of the Pacific. To the east, the peaks of the Coast Range.
- ROADS OF THE PACIFIC** - You will be taken in new Ford V-8 cars over reproductions of old and new roads of Pacific nations, including the Chinese Summer Palace Road, the Tokaido of Japan, the Regueta of the Philippines, the Gold Road of Panama, and the old Inca Road of Peru, the Santa Fe Trail and Collier's famous old Mission Road, El Camino Real.
- HALL OF INDUSTRY** - Scores of moving, working machines show how the modern automobile is made. Watch a 30-foot operating model—complete to the smallest detail—carry iron ore from the boat to the blast furnace. See the charge fuse and melt to be drawn off into waiting ladle cars. See how a white-hot steel bar is rolled into a slender rod, upset in a hot heading machine and shaped into finished parts.
- FORD METHODS AT WORK** - Learn how finished cars are carried to the quenchers—how they are made into cement—how gas is washed and used in the gigantic Ford powerhouses—how all given off in the churning process is distilled to make kerosene—how even are dust from Ford blast furnaces is caught, solidified and used.
- TWO MILLIONTHS OF AN INCH** - See the world-famous Johnson gage blocks that are accurate to two-millionths of an inch—a measurement 150 times finer than a human hair. See how these gage blocks are used in the making of Ford cars.
- MACHINES THAT ALMOST THINK** - See the almost human machinery that seam-welds the Ford radius-rod arms, attaches left and right feet, welds a yoke in place, tests every weld and delivers a finished, tested radius-rod in a few minutes.
- AN INDUSTRIALIZED FARM EXHIBIT** - Showing some of Henry Ford's methods of using farm products in industry. See the progress of the soy bean from bean to meal to powder, and then into finished parts for your automobile.
- MANY OTHER EXHIBITS** - See how Ford Safety Glass is made. Watch two mechanics take down and reassemble a Ford V-8 engine in less than twenty-five minutes. Learn how Ford dealer mechanics are trained by seventy-seven traveling service schools to give you good service. See the machine shop display of the Henry Ford Trade School, Henry Ford's first car is on display. A number of huge photographic murals depict the production cycle at the Rouge plant.
- SYMPHONY ORCHESTRA CONCERTS** - Famous symphony orchestras from Pacific coast cities will play daily in the Ford Bowl for visitors to the Exposition. The programs will feature music of familiar theme, with majestic overtures.



You feel safer... You are safer
in
AMERICA'S ONLY BODY ALL OF STEEL

No other lowest price car gives you the greater safety of...

AMERICA'S ONLY BODIES ALL OF STEEL... BIG HUDSON ROTARY-EQUALIZED BRAKES... THE ELECTRIC HAND (OPTIONAL)... 88-100 H.P. WHEN TRAFFIC DEMANDS QUICK ACTION... ROAD BALANCE ON HIGHWAY CURVES

TERRAPLANE
EAKIN MOTOR CO.

103 South Riverside Phone 304

\$585
and up, f. o. b. Detroit for closed models

See the New 1935 Ford V-8 at
C. E. GATES AUTO CO.
Sixth and Riverside YOUR FORD DEALER Phone 141