

VARIETY OF FOODS SENSIBLE METHOD FOR PICNIC LUNCH

Ground Meat, Weiners, Scrambled Eggs, or 'Ham And' Good Main Dish—Green Things Advised

The picnic season is here. But who is to say what the weather will be on the picnic day? Will it be cool enough for a picnic fire, or hot enough for all the cold things you can think of?

For this occasion, let us suppose a cool day—there will be plenty of hot days to plan for later—a day cool enough for a picnic fire to cook the picnic lunch. You can go back to nature and build your fire on the ground, or you can look for a ready-made fire-place in the park. And for a picnic with a fire you pack the lunch basket with the makings of the lunch, rather than the ready-to-eat cold things you take along on hot days.

Probably you have your favorite picnic dishes well in mind. But if not, here are a few suggestions. They come from the bureau of home economics of the U. S. department of agriculture, which always emphasizes, for picnic meals and all the others, a good variety of foods. You need more than bread and meat and potato chips or potato salad for a picnic dinner, as well as for any other.

Ground Meat Good. To begin with the meat, however. Shall it be ground meat, to make into hamburger cakes and broiled over the picnic fire—for the huge roll sandwich the children clamor for? Or will you have bacon broiled on

BONUS LEADERS CALL ON THE PRESIDENT



Leaders of the Democratic House bonus steering committee as they called at the White House to confer with President Roosevelt, on the Patman bill which would pay a cash bonus. The President had previously voiced his opposition to the bill. Left to right: Representatives Greenwood, Indiana; Johnson, Oklahoma; Patman, Texas, and Scruggs, Nevada. (Associated Press Photo)

a forked stick? Or "kebabs" or "kabobs," or whatever you call them—those tempting morsels of meat the size of one good bite, which you slip on a long stick or a metal skewer, each piece with a slice of onion to follow—then more meat, and more onion? You can use any kind of meat—beef, pork, or lamb, one or all. You broil the skewer over the fire, turning it so it cooks through and browns nicely all round. For a "wienie roast" you cook the "weenies" or frankfurters on a stick, or on a grill or in a pan over the fire, each tempting sausage to be popped into a roll when it is done.

Be sure it is thoroughly done, by the way. Frankfurters contain both pork and beef, and are only partially cooked when they are made. With your frying pan along, you can have scrambled eggs. Or for that matter, ham or bacon and eggs.

There are other hot dishes that go well at a picnic, of course, which you can cook at home. If you have never tried it, you will be surprised to find how long a baking dish of scalloped potatoes will stay hot if well wrapped up on the journey. Or scalloped macaroni, cheese, and tomatoes. Or baked beans. Or a casserole of spinach in white sauce, beaten up with eggs and baked. If you don't have more than half an hour's trip to the picnic grounds, and are going just for lunch or supper, dishes like these are as easy to have at a picnic as at home. Still another one is ham sliced thin and fried at home, and carried in a hot baking dish.

Take Green Things. Then for the green things—which must not be forgotten in a picnic meal any more than at home. Garden lettuce, radishes and young onions are in season over most of the country now, and what could be better on a picnic plate? Or perhaps a few tomatoes and a cucumber or a green pepper to cut up together for a salad. Or maybe a slice of tomato or onion to tuck into each sandwich with meat or eggs or cheese for filling.

For a cheese spread, the green tops of young onions chopped fine and mixed with cottage cheese is one of the best—chopped pickled onions, if you have them. For a hot drink one of the best for a picnic is hot cocoa made with milk. It is one way of providing the children with their milk as well as with something hot, and grown-ups enjoy it, too. But of course, it is easy to have hot coffee, too—and you can take milk along for the children.

For the finish of the picnic meal there is a fine choice of fruits just now. Berries of one kind or another. Apples, oranges, grapefruit, bananas. Or fresh pineapple, which is coming now in abundance from Cuba and Puerto Rico. Either cut up the pineapple and take it along, or wash it thoroughly at home and take it along whole to be cut up at meal-time at the picnic. Cut the pineapple

lengthwise in slices, melon-style, with skin on. Take the slice in your fingers and eat from the center. Or cut the slice crosswise into smaller wedges for convenience, and dip the point into sugar if you like. A picnic meal in these days and times may easily be a well-rounded meal with bread and meat or eggs, milk, vegetables and fruit. The things so often neglected on a picnic jaunt are the green things and milk.

ALUMNI IN FAVOR OF PRESENT SYSTEM

PORTLAND, May 23.—(AP)—The Portland chapters of the University of Oregon and Oregon State College of alumni associations believe the state's present administrative set-up for higher education should be continued.

In a joint resolution the two associations yesterday agreed that a chancellor should head the system. At the May 27 meeting of the board of higher education the mothers' organization and the dads' group at the university planned to present a request that the office of chancellor be abolished.

The resolution adopted by the Portland alumni associations of the two schools stated that "due to the agitation to abolish the position of chancellor," the groups "wish to go on record as favoring the continuation of the present system until it has been given a thorough and further test."

"Any effort to abolish the position of chancellor at this time," the resolution reads, "should be opposed."

"KICKERNOCK" Undergarments that fit at Ethelwyn B. Hoffmann's

CCC BUG BRIGADE OPENS WAR UPON TIMBER BEETLES

War on the devastating mountain pine beetle, which has destroyed thousands of trees in a stand of lodgepole and white pine covering some 6000 acres along The Dalles-California highway north of Fort Klamath, was formally declared today by Rogue River national forest.

A "bug brigade" of 40 men from South Fork of the Rogue CCC camp shouldered axes this morning, supervised by a forestry foreman and an army of representatives, and set out for a spike camp high in the tablelands southeast of Crater lake which will be their headquarters during the campaign. This is the second extensive drive in that region against the beetle, and as the infestation is less this year than last, the forest service hopes to clean up the area.

Six "spotters" are there now, locating and mapping the infested trees, which will be felled, limbed or peeled according to the extent of the disease, by the squadron of CCC men. With the spike camp located at Sand Creek service station, 20 miles north of Fort Klamath, the men will thoroughly check the infested area, which lies on both sides of the highway from Sun Pass on the south to the intersection of the park entrance road on the north.

Tracing down and exterminating the beetle will require a month of exhaustive work, but the men will not do it all; the sun's heat will be put into use to kill the insect while in the larvae and pupae stage. The CCC men will fell the infested trees, allowing the logs, trimmed of all branches, to lie a week or ten days while the sun beats down upon the timber bark and kills the insect. Before it has a chance to develop into the beetle stage, each log will be rolled over and the under side exposed to the same treatment.

Infested trees are not numerous. There may be only a few in each acre but if allowed to stand the beetles would spread rapidly and eventually get into the valuable national park timber nearby. To prevent this spread is the purpose of the campaign.

The beetles bore through the outer layer of bark, then travel along the inner layer, depositing eggs. When these eggs hatch and mature, beetles become so numerous in each tree that the trunk is eventually ringed and the tree dies. Scientists call the beetles *Dendroctonus Monticola*.

Besides preventing great swaths of timber from being killed, the beetle control work aids in roadside cleanup, and many ugly dead trees will be removed from the sides of The Dalles-California highway.

The work is under the supervision of Norman J. Penick, administrative assistant for Rogue River national forest. Laurence Epey is the forestry foreman and Lieut. Buford E. Boyd is the army representative. As another beetle control project, the forest service will cover the strip of land directly east of Crater Lake known as the "panhandle," with a reconnaissance crew this summer and fall to determine the extent of damage in that area, in preparation for the possible future invasion of another "bug brigade."

BANKER MEETING SPEAKERS NAMED

SALEM, May 23.—(AP)—Three speakers, two from San Francisco and one from Salem, have been chosen to address the 30th annual convention of the Oregon Bankers' association, which will be held June 17-18. The selection completed the program for the meet.

Albert C. Agnew, counsel of the Federal Reserve Bank of San Francisco; H. W. Strombeck, management counsel of the American Trust company of San Francisco, and Dr. Bruce R. Baxter, president of Willamette university, will give the chief addresses. Baxter will speak on "The Man in the Crowd." A. A. Schramm, state banking superintendent, will also address the session.

Eugene Courtney, manager of The Dalles branch of the First National bank of Portland, was expected to be elevated to the presidency of the state association, to succeed Frederick Greenwood. Courtney has been vice-president for the past two years.

Washboard Bridge CLINTON, Mass.—(UP)—A landmark of which this town isn't proud is what is known as "Bouncing Bridge," a span between Clinton and West Boylston whose washboard surface causes motorists to bump their heads on car roofs. No less than a dozen cars have zoomed over a 30-foot embankment at that point when bouncing drivers have lost control.

School Boy Built Auto REDLANDS, Cal.—(UP)—John Velardo drove to high school in state today in an automobile five feet long and three feet wide that he built from scrap iron and tin. A one-cylinder motorcycle engine is capable of driving the little car 40 miles per hour and gives 40 miles to a gallon of gasoline. It took six months to build.

DR. D. A. CHAMBERS, Optometrist will be at the office of Dr. E. D. Elwood at 135 S. Central, Monday, May 27th, 1:30 to 5 p. m. and Tuesday, May 28, 9 a. m. to 12, 1:30 to 6 p. m. For appointment phone 272.

AUTHORIZE ADDITION TO STATE HOSPITAL

SALEM, May 23.—(AP)—The state board of control today authorized immediate construction of the addition to the state hospital for which the legislature appropriated \$100,000.

Plans for the structure were being held up pending possible aid by additional funds from the federal government. The board authorized the officials to proceed without PWA aid, and the plans will be drafted immediately.

The building will cost about \$86,000 with \$14,000 to be used for equipment.

Notice. I will not be responsible for any debts incurred by anyone other than myself. ZENNA MATNEY.

HILLSBORO REBECCA ELECTED PRESIDENT

SALEM, May 23.—(AP)—Cora Heaton of Hillsboro was chosen president of the Rebecca Assembly at the election meeting here Wednesday, automatically stepping up from her former position of vice-president. Mrs. Estella N. Weed of Portland became the new vice-president.

Officers of the grand lodge of the I. O. O. F. were to be elected today, the final day of the annual convention of the grand lodge and affiliated bodies.

Mrs. May Jonas of Prineville was elected warden of the Rebecas. Mrs. Eda Jacobs of Portland was re-elected treasurer and Mrs. Hallie Engel of Albany was chosen secretary.

Phone 542 We'll haul away your refuse City Sanitary Service.

FRIDAY and SATURDAY

HAT SALE!

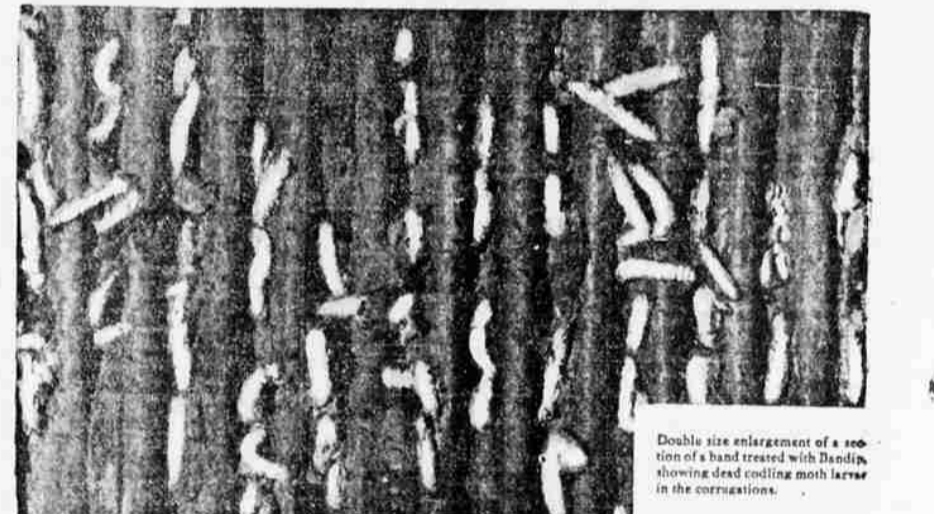
Hundreds to select from. All Colored Hats at Clearance Prices, Cost and Less.

White Hats at Money Saving Prices

79¢ and Up

THE BAND BOX

THE STORE THAT SAVES YOU MONEY



Here's how S-W BANDIP works for You...

Use S-W Summer Mulsion

● Tests made under field conditions show bands treated with S-W Bandip to be 99% efficient. From a total of 1167 codling moth larvae counted only 2 were alive after coming in contact with the bands.

● Treat your own bands with Bandip and kill practically 100% of the worms entering them; because S-W Bandip secures an absolutely uniform distribution of Beta Naphthol in the bands.

See your packing house for prices and supplies.

"Better control with fewer sprays"

The Sherwin-Williams horticultural advisor will gladly cooperate in suggesting an effective and yet economical spray program.

THE SHERWIN-WILLIAMS CO.

Spray and Dust Materials

This Is Good Weather For SNIDER'S Fresh Fruit SHERBERT AND ICE CREAM

Give the family a real warm weather treat by serving Snider's delicious Ice Cream in your favorite flavors.

Another suggestion is Snider's Lime Sherbet. Also made with oranges, pineapples and strawberries.

"WE LEAD—OTHERS FOLLOW"

SNIDER DAIRY & PRODUCE CO.

plan your vacation days in **Canada**

Motor direct to Vancouver, B. C., over the Pacific Highway, or drive your car aboard a "Plymouth" liner in Seattle, and sail away from the Lenora Street Dock any morning at 9 for Victoria, or Vancouver Island. Wherever you go a friendly welcome awaits you. Convenient ferry service between Victoria and Vancouver, and between Nanaimo and Vancouver offers opportunity to make the complete triangle tour of Canada's Evergreen Playgrounds. Mountain lakes and streams, scenic drives, golf and tennis—every type of summer recreation. Make your vacation home at one of these noted hotels...at materially reduced rates:

IN VICTORIA enjoy the fine appointments of the *Empress Hotel*, its beautiful gardens and *Casual Pool*. Superior service and cuisine. Daily rates, European plan, as low as \$3.50

IN VANCOUVER, a distinguished hospitality and social center of the city. *Hotel Vancouver*, famous for hospitality and excellent service. Daily rates, European plan, as low as \$3.50

PLAN YOUR VACATION NOW... call at our local offices for the 1935 edition of "Summer Travel in Canada." Also available at Auto Clubs and principal Travel Bureaus. We shall please you in making an interesting itinerary and reservations

CANADIAN PACIFIC HOTELS
W. H. Deacon, Gen'l Agt. Patsy Deacon, 2165 W. Broadway, (American Bank Bldg.) Telephone BR 3037, Portland.

EMPERESS HOTEL **HOTEL VANCOUVER**

"You don't have to be rich to enjoy rich whiskey!"

ENTHUSIASM! EXCITEMENT! from everyone that tastes it... and it doesn't take a barrel of money to buy it

Taste this Old Quaker Brand straight rye whiskey that is making a barrel of new friends every day. You can pay more for whiskey...but before you do...try Old Quaker. You'll find as have other thousands... You don't have to be rich to enjoy rich whiskey!

75¢ PINT NOW AVAILABLE IN OREGON
Code No. 136C

\$1.45 QUART Code No. 136A

THE OLD QUAKER CO., DISTILLERS—LAWRENCEBURG, IND., Est. 1846

OLD QUAKER
BRAND
STRAIGHT RYE WHISKEY

The Friendly Whiskey friendly to your taste, throat and purse

FIRST "SAILING" Portland to Chicago Thursday, June 6th

Six round trips each month

The Streamliner

CITY OF PORTLAND

● Answering the challenge of a swifter age Union Pacific's new 7-car Streamliner goes into service June 6th, between Portland and Chicago—cutting one full day from fastest former train schedules—requiring but one day and two nights en route.

The Streamliner is completely air-conditioned. Embodied in its diner-lounge car, coach-buffet car and three Pullman sleepers, are features of comfort and convenience not available in any other form of transcontinental travel.

SIX "SAILINGS" MONTHLY
Lv. Portland—1st, 6th, 11th, 16th, 21st, 26th, each month—2:45 p.m. Ar. Chicago 9:30 a.m.
Lv. Chicago—2nd, 8th, 13th, 18th, 23rd, 28th—6:15 p.m. Ar. Portland 8:00 a.m.

NO EXTRA FARE. Summer Excursion and One-Way rates apply as on The Portland Rose and The Pacific Limited. Space assigned on reservations received.

PUBLIC EXHIBITION
Portland
Tuesday... June 4th
Wednesday, June 5th
3 p.m. to 10 p.m.—at Union Station

For information and reservations
Ticket Office and Travel Bureau, Broadway and Washington, Portland, Oregon.

June 10th, 1935
Rolling West

UNION PACIFIC