

# AUTOMOTIVE NEWS

## CHEVROLETS TO BE AWARDED IN ESSAY CONTEST

Today starts the Craterian Theatre-Chevrolet Essay contest. Valuable prizes for the best essays of from ten to one hundred words will be awarded in answer to the following question: "Why is the whole town talking about the new Master DeLuxe Chevrolet?"

Get an official entry blank from the theatre or Rogue River Chevrolet company and return it to either place properly filled out not later than midnight on May 4th.

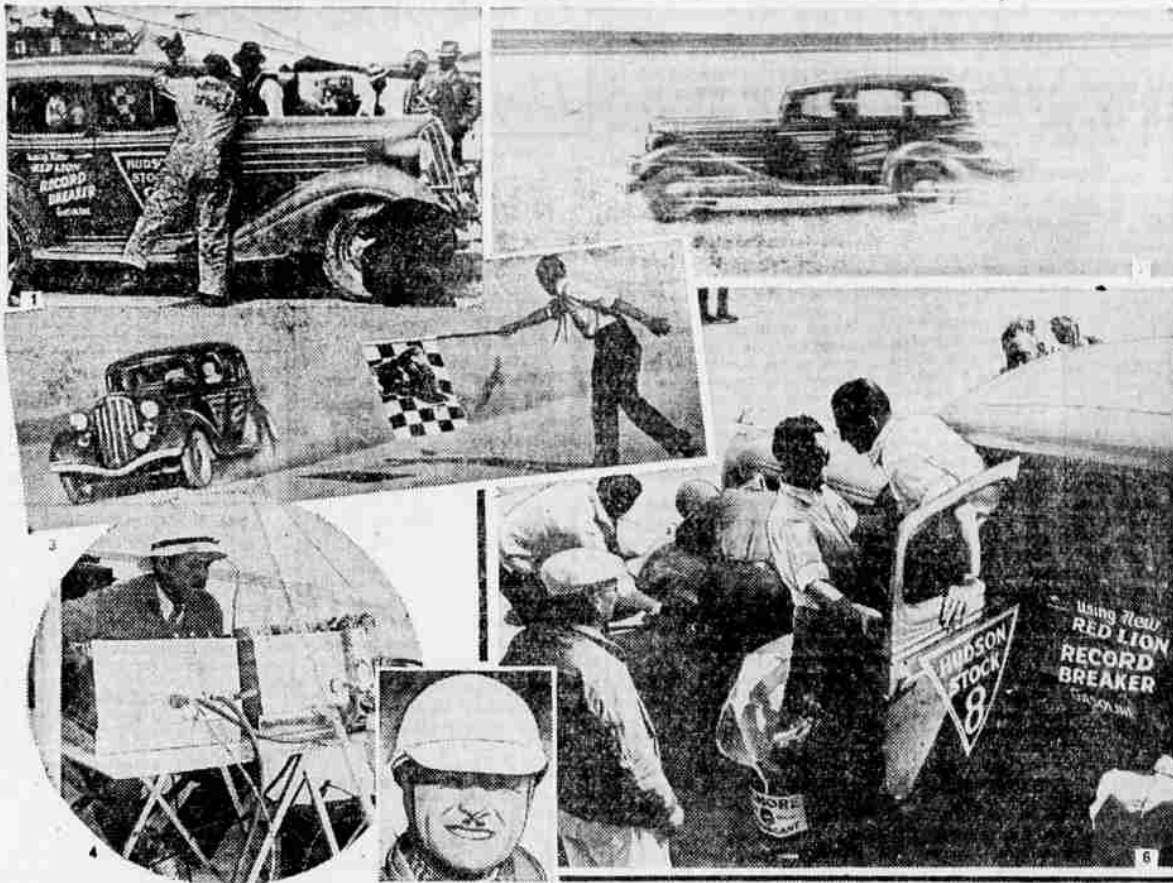
As a special inducement for early replies, there will be ten passes awarded on essays turned in before May 2nd, the winners decided on the basis of neatness, originality and accuracy of thought. The passes will be good for matinee or evening showings of Edward G. Robinson in "The Whole Town's Talking" which starts Thursday at the Craterian Theatre.

The national prizes are as follows:

- 1—Chevrolet Master DeLuxe Touring Sedan.
- 2—Chevrolet Master DeLuxe Coach.
- 3—Chevrolet Standard Sedan.
- 4—Chevrolet Standard Coach.
- 5—Chevrolet Standard Coupe.
- 6—1 year's admission to local theatre.
- 7—6 months' admission to local theatre.
- 8—3 months' admission to local theatre.
- 9—2 months' admission to local theatre.
- 10—1 month's admission to local theatre.

The national prize-winning essays will be selected by the National Judging Committee, headed by nationally prominent personalities. All contributions from Medford, regardless of their winning the local prizes, will be sent to the Chevrolet Motor company by the local committee, so that each reader will have TWO chances to win.

## Records At Muroc Broken By Hudson Using Gilmore



Stock car speed records were broken by the score at Muroc Dry Lake, California, recently when a Hudson 8 stock sedan, using Gilmore Red Lion gasoline and Lion Head motor oil, was driven by three nationally famous race pilots over an American Automobile Association surveyed five-mile course. Above (1) trained Gilmore pit crews are shown refueling and checking the Hudson in 72 seconds time during a pit stop. (2) The car as it averaged 93.222 M.P.H. for a new American (Class C piston displacement) record for five miles. (3) The Hudson "getting" the Record Breaker checkered flag at the completion of 1,000 miles. Averaging 85.54 miles per hour, the Gilmore powered Hudson traversed this distance the fastest of any stock sedan in history. (4) A. A. A. officials at electrical timing stand. (5) Wilbur Shaw who was driving when stock records from one to five kilometers were shattered. (6) Babe Stapp replacing Al Gordon at the wheel during a lightning pit stop.

## Repair Methods Keep Pace With Motorists' Needs

Opening of another spring and summer season of increasingly heavier automobile traffic should cause every car owner to consider the condition of his tire equipment, not only from the standpoint of safety but for the sake of the economy.

Suggestion: that the car owner should have his car's tire equipment carefully checked, not necessarily to buy new ones; but maybe to change the tires around on other wheels on his car to equalize wear; or to check the alignment of wheels to be certain that undue wear is not exacting its toll from tire mileage. It is made by C. C. Furnas, local Goodyear dealer, who is in position to offer these services.

"Many car owners are driving their automobiles with wheels slightly out of line; or driving tires that need retreading and could be repaired, or retreaded at slight cost with big mileage recovery; or some owners are taking chances driving on tires that are ready to let go at any time, which is dangerous in today's speedy traffic."

"Tire repair methods have kept pace with the many changes and new developments in motor manufacture," Mr. Furnas continued, "so it is significant that Goodyear maintains a group of tire repair schools located at various points in the country where dealers may send their men every year or so, to learn and practice new ways of handling repairs."

"Moreover, it costs a great deal less to take care of tire conditioning at frequent intervals, than it does to wait until the tires are too far gone for repair, so that many motorists are needlessly throwing away many thousands of dollars annually in mileage, which could have been saved."

**ATTENTION MOTORISTS**

Grafex guarantees to increase your gasoline mileage at least 10%, and increase your crank case oil life at least 100%. This alone makes Grafex a highly profitable investment for every motorist: car, truck or tractor; owner. Grafex is a new motor conditioner, a heat defying concentrated super-lubricant which stops wear, reduces friction drag, it seals the power in your motor, the results are truly astonishing. Grafex is inexpensive, the cost to completely Grafex your motor is only \$1. Drive in tomorrow 129 N. Riverside, apply Grafex and smile at the miles. Adv.

**MOVED**

Palmer Real Estate Agency has moved office from Jackson Co. Bank to Medford Center Bldg., downstairs.

EXCHANGE OLD GOLD for cash or trade at Brophy's Jewellers.

## Ford Dealers sell all makes of USED CARS

**Satisfaction guaranteed. Unusual values because of the many high-grade cars being turned in for the New Ford V-8. Low prices. Easy terms.**



## Here's SAFETY no other tire can give you!

If your tires fail to grip, the best brakes ever built can't keep you from skidding into an accident. And no other tire will stop your car as quickly as the Goodyear "G-3." That's a strong statement—but 8,400 stopping tests prove it.

It will pay you to come in and see why this tire has better grip—and why it keeps its grip 43% longer. You get a lot more safety at no extra price.



**GOODYEAR**

**EASY** **RIDE AS YOU PAY**

**BUY GOODYEARS NOW** **TERMS 51¢ PER WEEK**

You'll like the way we handle credit—No red tape. You can pay as you ride, terms to suit your convenience, weekly, semi-monthly or monthly payments. Goodyear Speedways cost as little as

## MEDFORD SERVICE STATION

"YOUR TIRE SHOP". C. C. FURNAS, Proprietor. Main and Pacific Highway. Phone 14

## Wheat Loaf Wins Popularity Here

A remarkable feature of the recent introduction of Honey Krushed Wheat Bread, a new product from the ovens of the Fluhner's Bakeries, Inc., has been its immediate acceptance by housewives.

Almost overnight hundreds of shrewd, careful buyers have accepted Honey Krushed Wheat Bread. A few tried it, recommended it and now insist on having no other. The pleasing formula of whole cracked wheat kernels, the sweetening with pure honey, the regulating, harmless effect of the secret ingredients and the appetizing flavor, met with instant success.

One food shop reports that customers walk out if his supply is exhausted before orders can be delivered. Other grocers state that on phone orders this bread is specified and positively demanded. It is reported that sales have increased 300 to 500 per cent in a single week.

This is all very gratifying to Fluhner's Bakeries, Inc., who made an exhaustive search before securing this secret formula which they control exclusively in this locality. The healthful qualities of bread have been emphasized since the days the Indians baked crude loaves on hot stones. But it is only recently that a formula was perfected which combines the energy-giving qualities of bread with mild, effective ingredients for the relief of constipation.

Modern habits of living, lack of sufficient exercise, sedentary occupations have all tended to slow up the digestive system, retard natural elimination and made necessary medical purgatives. The continual demand for all sorts of teas and cathartics indicates that countless thousands resort to this artificial method for relief.

Now there is a simple, wholesome regulator as an important part of every meal. Honey Krushed Wheat Bread, that is welcomed by grateful people who have suffered from constipation for years. Noted food experts have endorsed it, physicians are prescribing it and housewives are serving it with amazing results. There is renewed vigor and happiness in every cellophane-wrapped loaf of Honey Krushed Wheat Bread.

**ALL MAKES OF WATCHES** repaired by expert watchmaker Brophy's Jewellers.

See Mail Tribune want ads.

## LAMSON'S FATE TO JURY THIS WEEK; FALL THEORY HIT

**SAN JOSE, Calif., April 27.—(AP)**—Blocked in an attempt to stage another courtroom demonstration, the prosecution nevertheless today had in the record of the second wife murder trial of David Lamson testimony challenging the accidental fall theory enunciated by the defense.

The state's rebuttal case still is incomplete when court adjourned for the weekend recess, but it was expected to be brought to a close early next week, the eleventh of the present trial, longest in Santa Clara county court history. Extended arguments to the jury will follow.

A plan to perform an experiment in the reproduction of the Lamson cottage bathroom used previously by the defense in a courtroom demonstration was refused by Judge R. R. Syer on the defense objection, but Dr. I. W. Merrill, Campbell physician, was permitted to testify concerning tests he made with a girl.

The girl, Miss Naomi Young, who was the subject of tests which Dr. Merrill declared refuted the defense contention Mrs. Lamson was killed in an accidental fall in her bathtub on May 30, 1933, was approximately the dead woman's size.

Miss Young in a theoretical fall did not strike her head with sufficient force against the wash basin to cause serious injury, as the defense contends Mrs. Lamson did, Dr. Merrill testified.

**High Methodist III**

**ENDICOTT, N. Y., April 27.—(AP)**—Although attending physicians said his condition was not alarming, Bishop H. Lester Smith of Cincinnati, presiding officer of the 84th annual meeting of the Wyoming Methodist Episcopal conference, here, suffering from lobar pneumonia, today was placed under an oxygen tent at Wilson Memorial hospital in Johnson City.

## New Internationals Go To Local Firms

Walter W. Abbey Inc. reports the sale of three International trucks during the past week. They have just delivered the new trucks to Fluhner's Bakery, Medford Concrete Construction company and the Jackson County Seed and Feed company. Mr. Abbey says they will unload a carload of Willys 77 automobiles and a carload

of International trucks next week. A new panel delivery will be included in the Willys shipment. Mr. Abbey says: "These new delivery cars, which sell for \$615 delivered in Medford, have a trim, smart appearance combined with performance which means better service at lower cost. They fill a long needed want, speedy, low cost delivery of orders, increasing the merchants turnover and actually saving money over cost of using heavier vehicles."

**Quake Hits Azores**

**PONTA DELGADA, Azores, April 27.**—(AP)—Several persons were killed or injured at Ribeira Que Te, near here, by a short sharp earthquake felt at 4:10 P. M. (1:10 P. M., E. S. T.) today. A number of houses were demolished.

**WINDOW GLASS**—We sell window glass and will replace your broken windows reasonably. Trowbridge Cabinet Works.

## Safer Stopping

**THAN POLICE ASK OF ANY BRAKES by more than 40%**

**Rotary-Equalized Brakes on new Hudsons and Terraplanes Amaze Traffic Experts**

**HERE'S WHAT HAPPENED IN PUBLIC DEMONSTRATION SUPERVISED BY DETROIT POLICE DEPARTMENT**

| Car Speed (with 5 adult passengers) | Police Figure for Perfect Brake Condition | Average Stopping Distance of Hudson-built Terraplane |
|-------------------------------------|---|--|
| 20 m. p. h.                         | 18 feet                                   | 10 feet, 8 inches                                    |
| 40 m. p. h.                         | 71 feet                                   | 40 feet, 1 inch                                      |
| 50 m. p. h.                         | 111 feet                                  | 67 feet, 4 inches                                    |

**BEFORE YOU BUY ANY 1935 CAR—SEE IF IT CAN STOP LIKE THIS**

Brake requirements are severe in Detroit. Yet this Hudson-built Terraplane, a stock model carrying five adults, beat by more than 40% the stopping distances Detroit police call perfect! Did it again and again—at 20, 40 and 50 miles an hour! Stopped smoothly—all four wheels tracking straight ahead!

Before you buy any new car, see if it can match this safe stopping record. Test them all. Compare other features, too, with what Hudson and Terraplane offer—then decide.

**The ELECTRIC HAND**

Greatest mechanical advancement of 1935. Simplified, easier, safer driving... faster, smoother shifting, with both hands always on the wheel. An exclusive feature. All Hudsons and Terraplanes are equipped with standard gear shift. Electric Hand optional on all 1935 models at slight extra cost, except on Hudson Custom models, on which it is standard.

**AND LOOK AT THE PRICES!**

**\$585** and up for Hudson-built Terraplane (88 or 100 horsepower)... Hudson Six \$695 and up (91 or 100 horsepower)... Hudson Eight \$760 and up (111 or 124 horsepower). All prices f. o. b. Detroit for closed models.

## HUDSON and TERRAPLANE EAKIN MOTOR CO.

103 South Riverside Phone 304

Have You Seen The New Master DeLuxe Chevrolet?

**?**

SEE THE NEW MODELS AT **Rogue River Chevrolet, Inc.**

and then enter the contest—

"Why the Whole Town's Talking About the New Chevrolet"

Secure entry blanks at Craterian Theatre or Rogue River Chevrolet, Inc.

Watch for Edw. G. Robinson in "The Whole Town's Talking"

**HOTEL MANX SAN FRANCISCO**

**NEW** Innovations, Service and Comfort

The Most Convenient The Best Accommodations The Finest Meals

Tab and Shower Baths Circulating Ice Water 150 ATTRACTIVE ROOMS

**Rates**

11-30 \$12.00, 31-30 \$13.00 SINGLE \$15.00, \$16.00, \$18.00, \$20.00 DOUBLE SAMPLE ROOMS \$14.00, \$16.00

SPLENDID RESTAURANT EXCELLENT COFFEE SHOP GARAGE SERVICE AT DOOR

Meet me at the MANX HARVEY M. TOY, MANAGING OWNER POWELL AT OYARRELL "IN THE HEART OF SAN FRANCISCO"

**Hotel San Pablo** SAN PABLO AVE. AT 20TH STREET OAKLAND CALIF.

Down Town Central

A Home Away From Home

Completely Renovated and Redecorated

RATES With detached bath from \$1.25 daily With Bath from \$1.75 daily

FREE GARAGE NEW MODERN COFFEE SHOP

DIRECTIONS TO HOTEL Stay on Main Highway (San Pablo Avenue) directly to 20th Street Management Harry B. Strong