

AUTOMOTIVE NEWS

Complete Automotive Service Featured at Lewis Super Service Station



Glimpse of a portion of the large Lewis Super-Service station, located at Eighth and Front streets in this city. Complete automotive service day and night is featured by this to re-established Medford firm.

Lewis Super-Service has recently announced the addition of an entirely new merchandising plan to their long list of services. "We have felt for some time the need in our community for a real plan which would permit our people to buy first class merchandise and pay for it on their own terms," said Mr. Lewis. "We are very fortunate in being the first in our city to offer this idea to the buying public."

In addition to Goodrich Silver-Tires and Tubes, and Goodrich Batteries, Mr. Lewis is handling Mercedes, Buick, and other merchandise for the automobile owner under the budget pay plan. All that is required to open an account is the house certificate.

SHRINE APPOINTS LEADERS FOR BIG SPRING CEREMONY

ASHLAND, April 20.—(Sp.)—Chairmen of the several committees in charge of the arrangements for the coming spring ceremonial of Hillah Temple of the Mytic Shrine to be held in Ashland on Saturday, May 25, have been announced.

Post Potentate Albert K. Cass, Grants Pass; Post Potentate, George R. Chapman, Roseburg; George W. Hills, Klamath Falls; Preston P. Gray, Marshfield; Kenneth P. Lawrence, Coquille; Captain Prentice M. Clark, Winchester Bay; E. E. Evans, Clifton; Dr. M. C. Sult, Lakeview; Geo. W. Ager, Bend; Clarence L. Curtis, Eugene.

TOO LATE TO CLASSIFY

WANTED—Old gold, sell to government licensed dealer. Brophy's Jewellers.

FOR SALE—For your vegetable and flower plants try the small hot-house 1 1/2 miles north on the old Pacific highway. Tomato plants 5 cents per dozen and up. Indiana Canner seedlings \$1.50 per thousand.

WANTED—Truck cab or car body for 1930, 1931 or 1932 Ford. Lloyd F. Silva, Rt. 2, Box 460, Grants Pass.

WANTED—Have client for 8-room furnished home, will pay \$40 to \$50 per month. Chas. R. Ray, Realtor, Medford Bldg., Phone 302.

PROFITABLE meat route open to reliable party. Must have good truck. For particulars see Huber Packing Co. Phone 162.

EQUITY in Dodge truck for sale or trade for what have you. 303 Beatty.

FOR RENT—2-room furnished apta. Call 749-Y or 317 E. Jackson.

FOR SALE—600 pounds new 2 1/2 Mill Balls Medford Pipe & Machinery Co.

FOR SALE OR TRADE—100 acre stock ranch, small home, good location for range. \$1000.00 or trade for machinery. Medford Pipe & Machinery Co.

FOR SALE OR TRADE—1/2 acre close in, small home, good location. \$350.00 or trade for machinery. Medford Pipe & Machinery Co.

FOR SALE—Electric range, refrigerator, mattress and row-boat. 223 W. Jackson.

FOR SALE—1928 Chevrolet sedan, very good condition. \$135.00 cash if sold Sunday, 1223 W. Main.

FOR SALE—Good Howard Piano \$65.00. Box 3882, Mail Tribune.

EXCHANGE—Small farm, good improvements and community 5 miles from Medford, for small place close to Medford or any nearby town. Box 3882, Mail Tribune.

DAILY'S AUTO PAINTING
 MEDFORD'S OLDEST and FINEST
Unequaled Work Guaranteed
 32 South Bartlett Phone 724-R

Studebaker Have Built-in Trunks



A view of the new, enlarged, built-in trunk which is available on all Studebaker Custom Sedan models. Trunk has abundant room for three large suitcases.

Five Fire Reported—The fire department answered a call at 9:45 Saturday morning to 47 Rose avenue, when a flame fire was reported. There was no damage to the house, which is owned by Ed Mann.

Substitutes for Cook—J. W. Pader of Willamette street will substitute for Jesse A. Smith, cook for the winter crew at Crater Lake National park, while the latter attends the trial of E. C. Sollinsky at Portland, having been subpoenaed as a witness.

Plan Inter-City Meet—Medford Rotarians are planning an interesting program for their inter-city meeting with the Marshfield Rotary club May 4. Members of the local club will leave here Saturday afternoon and will be guests at dinner that evening at which time they will present the program. The program committee consists of Wm. Gates, chairman; Lee Bishop, Horace Bromley, C. D. Bean and Herb Grey. On Sunday a variety of entertainment will be provided by the Marshfield group including trips to the beaches, deep-sea fishing and golf. A large number of local Rotarians plan to make the trip.

Fairbanks Hotel Burns
FAIRBANKS, Alaska, April 20.—(Ap)—Leaping from the second floor of the burning Alaska hotel to escape the flames Robert W. Taylor, about 65 steamship company agent here, suffered internal injuries from which he died shortly afterwards. The hotel was destroyed.

MRS. MARTIN, PSYCHIC Crystal reader. Psychologist. Reading daily 412 No. Ty.

STUDEBAKER SHARES VICTORY by sharply reducing delivered prices

ONLY the new and greater Studebaker Corporation, now brilliantly victorious and enviably strong financially, can offer you such a money-saving deal. Studebaker now has no bank loans, no burdensome overhead, no excessive plant valuation. And all these economies are being promptly shared with the public.

This big, roomy sedan is built as only Studebaker builds automobiles—with steel-reinforced-by-steel body and roof panels, compound hydraulic brakes, automatic ride control and a brilliantly flexible, amazingly economical Studebaker engine.

The low delivered price at right includes all necessary equipment and Federal excise tax. Come in and see for yourself.

\$890 DELIVERED COMPLETELY EQUIPPED IN MEDFORD NOTHING MORE TO PAY

Sanderson Motor Company
 207 So. Riverside Phone 1385

NEW MANAGEMENT AT P. O. SERVICE

The Post Office Super-Service, one of Medford's newer gasoline stations, is now under the management of Ed Case, assisted by Herb Hartig, according to announcement made yesterday. Mr. Case comes to this city from Caldwell, Idaho, where he was prominent in business circles.

Through this modern station's Check-Chart system southern Oregon motorists are assured of efficient, rapid and inexpensive car servicing. A detailed report of an ailing car's condition is made to the owner and when the job is completed the car is promptly delivered to the home or office.

Prestone tires and tubes are featured by the Post Office Super-Service. In addition to these famous products, Gilmore oils are a specialty. Expert lubrication, washing, greasing, Bowe's Seal-Past tire repairing and Willard batteries are all taken care of by intelligent, experienced workmen. Absolute satisfaction is guaranteed on every job, according to the new managers.

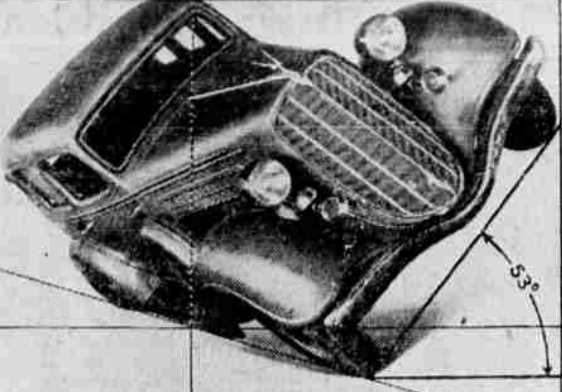
A special discount on tires, allowing 10 per cent on old automobile tires will be in effect until April 27, and a convenient budget plan has been adopted to fit the motorist's needs.

Five Chinese Reds
WASHINGTON, April 20.—(P)—The American consulate general at Hankow, China, reported to the state department today that 32 American residents, including women and children, were being evacuated from Chengtu by boats, automobiles and aeroplanes as a result of the communistic army threat against that city.

ALL MAKES OF WATCHES repaired by expert watchmaker. Brophy's Jewellers.

For Hose that Wear Buy SOLITE & HORSE Ethelwyn B. Hoffmann

ANGLE OF STABILITY ILLUSTRATED



How far can a modern automobile be tilted before it will turn over? The Hudson Sedan has its center of gravity 21 1/4 inches above the ground. It can be tilted to an angle of 53 degrees before it loses its stability. This contributes materially to the safety of the car at high speed and on winding roads.

New Construction For Convertibles Plymouth Feature

DETROIT—Development of an entirely new type of automobile construction to provide unusual strength and rigidity in convertible models, was announced today by the Plymouth Motor Corporation.

The development is incorporated in the latest Plymouth Convertible coupe, which will be in production soon.

An exclusive Chrysler Motors Engineering development, the new type construction involves the use of two frames instead of the usual one. The first frame is the regular chassis frame, while the second is a sub-frame built inside the convertible body.

In assembly, the convertible body with its enclosed frame is mounted on top of the regular chassis frame. Then the two frames are bolted together to create a construction as strong as the body-frame assembly of sedan models.

The regular X-type chassis frame is six inches in height, while the sub-frame, also of rigid X-type construction, is four inches high. The two, bolted together, form a steel girder that is actually comparable in size and strength to the girders used in the construction of skyscrapers.

Passengers in the new Plymouth Convertible ride on top of this 10-inch steel girder, surrounded by the steel walls of the body.

The engineers who developed the new "double-frame" construction point out that it solves a major problem that has confronted the automobile industry ever since the presentation of the first convertible car.

Heretofore, all convertible cars were weaker than other body types because the major connecting link between the cowl section and rear section was the body sill. This resulted in racking and twisting motions that were not present in enclosed body types. Until this development, the problem had defied all efforts at solution.

PENDLETON, April 20.—(P)—Leo Collins, 30, was sentenced in circuit court here today to two years in state prison, following a plea of guilty to obtaining money under false pretenses.

TRUCK SALES ARE IMPROVEMENT SIGN

"Accelerated truck sales is one of the infallible indicators of an upsurge in business."

In this manner C. M. Hurd of Rogue River Chevrolet, Inc., epitomizes the economic situation. "Locally and all over the west, we note that the grocer, the baker, hardware merchant and fleet operators are buying new equipment," continued Hurd. "That they are buying many Chevrolets indicates that our policy of building a quality truck at the world's lowest price is right. In 1934, Chevrolet led the field in truck sales by a comfortable margin. This year we expect to show an increase of approximately thirty per cent in sales over 1934."

"In addition to offering the world's lowest priced trucks, Chevrolet maintains its famous reputation for durability, power and economy by increasing these factors in every model in the truck line."

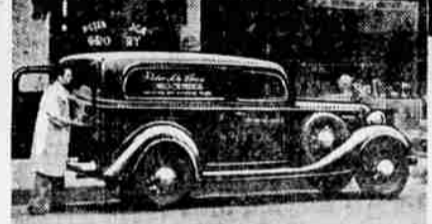
Ladies of Sacred Heart church are serving annual Easter luncheon at 1 o'clock, at the Parish hall. Home-cooked food, cards and prizes. All for 35c.

Rib-Cone Ball Mills for Every Mine

No matter what size or where located, or what type of ore. They GET PAY because they GET MORE Gold from Every Ton of ore and use less power, water & space. Get details and low prices on Rib-Cone Mills, crushers, concentrators, water wheels, and all milling equipment. Write today for Bulletin 300.

Straub Mfg. Co.
 Since 1902 335 Chestnut St., Oakland, Cal.

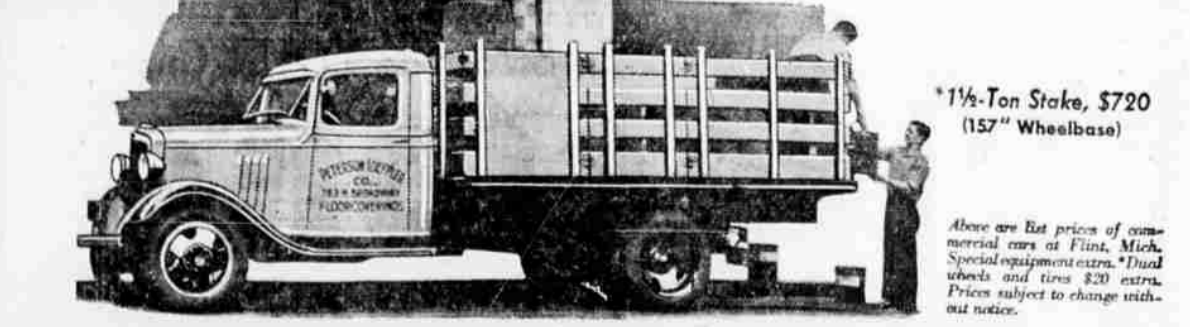
Buy them at the WORLD'S LOWEST PRICES Save on operating costs, too!



Sedan Delivery, \$515 (107" Wheelbase)



Half-Ton Pick-Up, \$465 (112" Wheelbase)



CHEVROLET TRUCKS

Rogue River Chevrolet, Inc.

32 North Riverside Chevrolet Sales, Service and Parts Telephone 183

Chevrolet Trucks give maximum dependability, as well as maximum economy, because they're powered by VALVE-IN-HEAD SIX-CYLINDER ENGINES

The most important consideration of all, in buying and operating trucks, is economy. Economy of first cost and operating cost. And the most economical trucks on the market today are—Chevrolet Trucks. They sell at the world's lowest prices. They give maximum operating economy, too, because they're powered by valve-in-head six-cylinder engines. And they will keep on saving you money, day after day and year after year, because Chevrolet builds so much extra quality and rugged reliability into them that their service is as carefree as their prices and operating costs are low. You get top economy when you buy Chevrolet Trucks, and that's exactly what you want in a truck—particularly today. Phone or visit your nearest Chevrolet dealer and get the right truck for your job at the world's lowest prices.

CHEVROLET MOTOR COMPANY, DETROIT, MICHIGAN
 Compare Chevrolet's low delivered prices and easy G.M.A.C. terms. A General Motors Value

1 1/2-Ton Stake, \$720 (157" Wheelbase)

Above are list prices of commercial cars at Flint, Mich. Special equipment extra. *Dual wheels and tires \$20 extra. Prices subject to change without notice.