

STANDARD BUTTER DROPS HALF CENT IN PORTLAND MART

PORTLAND, April 12.—(AP)—With the exception of a cut of 1/2 lb. in the price on standard grade butter, the cube market was unchanged during the late session of the produce exchange.

There was no change in the butter market. Market for eggs showed a firm tone locally with prices generally held both at the buying and selling ends. Receipts of eggs are perhaps a trifle smaller than last week.

A further advance in the price on oranges was announced by distributive interests. An advance of 50 cents a case in lemons was announced. California Winningsstead cabbage was bringing about 83 cents, about 50-60 pounds. Car due next week.

Celery market was weak with Florida offered at a substantial discount. Fancy field grown rhubarb from Milwaukee was being offered \$1.15 box of 15 pounds.

Country killed meats were without change. Onions have advanced to 86 for the best. Potatoes were firmer to higher with best locals, Yakima and Deschutes to 82.

Markets

PORTLAND, April 12.—(P)—Cattle: 50; active, unchanged. HOGS: 200; steady, unchanged. SHEEP: 100; steady, unchanged.

CHICAGO, April 12.—(AP)—(U. S. D. A.)—Hogs 8000; slow, demand dull; about steady; on weights below 250 lbs., general market 10c lower; better grades, 180-240 lbs., 9.15-9.30; top, 49.30; 240-340 lbs., 48.90-49.15; 140-180 lbs., 48.75-49.20; sows, 48.25-55.

CATTLE 2000; lower grade steers and yearlings strong to shade higher; bulk, 49.10-11.00; medium 1200-lb. Canadians, 49.75; nothing done on few good yearlings, held at \$11.50-12.50; also stock; firm; best heifers, \$10.00; cutter cows, \$8.50-9.75; bulls, strong to 10c higher; weighty sausage offerings, 55.85.

Woolled lambs, 48.25-60; clipped lambs, 47.50-75.

SOUTH SAN FRANCISCO, April 12.—(AP)—(U. S. D. A.)—Cattle 125; nominally steady; steers off market; good long-fed steers and yearlings eligible, 46.00-50; choice eligible vealers toward 40.25.

SHEEP: None; good-choice around 70-75-lb. spring lambs nominally noted around 48.25-50; late Thursday, spring lambs weak to 25c lower; deck 70-lb. averages, 47.50, sorted 3 per cent; double-deck medium-good, 49-lb., 47.25; lightly sorted, double deck 75-lb., fed shorn old crop, 45.50; lightly sorted, 44.50; odd ewes, 43.00.

Portland Produce

PORTLAND, April 12.—(AP)—BUTTER—Prints, A grade, 33 1/2 lb. in parchment wrappers, 34 1/2 lb. in cartons; B grade, parchment wrappers 32 1/2 lb.; cartons, 33 1/2 lb.

BUTTERFAT—Portland delivery: A grade deliveries at least twice weekly, 33c lb.; country routes, 31c; B grade, deliveries less than twice weekly, 32c lb.; C grade, at market.

B grade cream—Buying prices butterfat basis, 95c lb.

EGGS—Sales to retailers: Specials, 24c; extras, 23c; fresh extras, brown, 23c; standards 21c; fresh mediums 21c; medium firsts, 19c dozen.

EGGS—Buying prices of wholesalers: Fresh specials, 23c; extras, 22c; firsts, 20c; extra mediums 19c; medium firsts, 18c; under grade 17c dozen.

POTATOES—Oregon Burbanks, \$1.75-2.00 central; Dechutes Gems, \$2.00; Idaho Gems, \$1.75-1.85.

Cheese, milk, country meats, live poultry, onions, new potatoes, wool and hay, steady and unchanged.

Portland Wheat

PORTLAND, April 12.—(AP)—Grain:

Wheat: Open High Low Close
May — 89 1/2 89 1/2 82 1/2 83
July — 89 1/2 89 1/2 80 1/2 82 1/2
Sept. — 89 1/2 89 1/2 80 1/2 83
Cash: Big Bend bluestem, 84 1/2 c; dark hard winter, 12 per cent, 101 1/2 c; do, 11 per cent, 85c; soft white, 85 1/2 c; western white, 85c; hard winter, 84c; northern spring, 87c; western red, 84 1/2 c.

Oats, No. 2 white, 82 1/2.
Corn, No. 2 eastern yellow, 42.25; mill-run standard, 42.4.
Today's car receipts: wheat, 24; flour, 3, hay, 1.

Chicago Wheat

CHICAGO, April 12.—(P)—Wheat:

Open High Low Close
May — 97 1/2 100 1/2 97 1/2 100 1/2
July — 96 1/2 99 1/2 96 1/2 99 1/2
Sept. — 96 1/2 100 1/2 96 1/2 100 1/2

Wall St. Report

NEW YORK, April 12.—(AP) Quiet strength prevailed in today's stock market, with metals, rails, some utilities and scattered industrials edging into higher territory. The silver situation apparently was a neutral factor in most categories. The closing tone was firm. Transfers approximated 750,000 shares.

Business news was cheering and other influences more bullish than otherwise. Selective buying was the rule.

U. S. Smelting, Cerro de Pasco, Silver King, Phelps Dodge, Howe Sound, and American Smelting moved up fractions to around 3 points.

Today's closing prices for 33 selected stocks follow:

Al. Chem. & Dye	133
American Can	118
American & Foreign Power	33 1/2
A. T. & T.	106 3/4
Anacosta	11 1/2
Atch. T. & S. F.	40 1/2
Bendix Aviation	14 1/2
Berkeley Steel	25 1/2
California Packing	39
Caterpillar Tractor	41 1/2
Chrysler	35 1/2
Commercial Solvent	7 1/2
Curtis-Wright	2 1/2
DuPont	92 1/2
General Foods	34 1/2
General Motors	39 1/2
International Harvester	37 1/2
I. T. & T.	7
Johns-Manville	44
Montgomery Ward	26
North American	13
Park Utah	4 1/2
Penney (J. C.)	62 1/2
Phillips Petroleum	18 1/2
Radio	4 1/2
Sig. Brands	15 1/2
Std. Oil Cal.	31 1/2
Std. Oil N. J.	31 1/2
Trans. America	40
Union Carbide	48 1/2
United Aircraft	11 1/2
U. S. Steel	31

San Francisco Butterfat
SAN FRANCISCO, April 12.—(AP)—First grade butterfat, 33c, fob, San Francisco.

Silver
NEW YORK, April 12.—(AP)—Bar silver strong, 2 1/2c higher at 68 1/2c.

Lawnmowers: Sharpened, Phone 361, Medford Cyclery, 23 N. Fir.

SMART NEW SHOP FEATURES FROCKS

"Just a cozy little corner" would be a good way to describe the smart ladies' apparel store, the Gladis Mae shop, which opens at 16 South Bartlett street tomorrow morning. In a tiny but smart room, the shop will feature Donna Lee wash frocks—"Cottons with a dash."

Skirts and blouses will be the main items to be featured in the new store. Gladis Mae Grinstead, the owner, stated today. She has had the interior of the store, which is located

in the rear of the building occupied by the Palmer Electric store, completely remodeled and painted. New shelves and hangers give a maximum of stock in a minimum of space. A friendly look to the tiny store will undoubtedly prove popular with Medford ladies, shopping for their spring wash dresses. The store must be seen to be appreciated, and the Gladis Mae shop will welcome all visitors.

Use Mail Tribune want ads.

BIRTHS

Mr. and Mrs. E. T. Fredenburgh of Butte Falls are the parents of a baby boy weighing eight pounds, born yesterday at Purucker's maternity home.

Use Mail Tribune want ads.

CHEWY ...

And generously filled with dates to make them deliciously moist are these popular

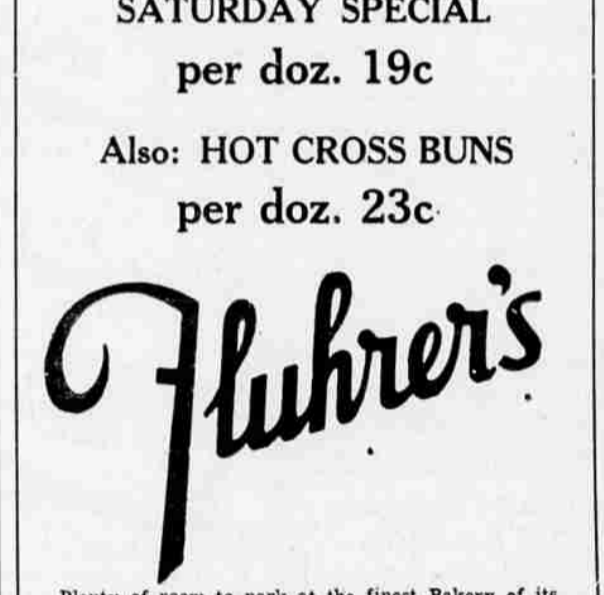
DATED OATMEAL COOKIES

We are again featuring this popular item because we believe it is one of the finest cookies we've ever eaten.

SATURDAY SPECIAL

per doz. 19c

Also: HOT CROSS BUNS per doz. 23c



Plenty of room to park at the finest Bakery of its size in the West.

PEERLESS MARKET

12-14 NORTH BARTLETT
JUST PHONE 603 - "WE DELIVER THE GOODS"

The Producer Gets a Break

for the first time in several years. Livestock has greatly increased in price which naturally causes meat prices to raise. But The Peerless is giving the consumer a break by holding the price of good meats within reason without jeopardizing the producer.

THE ORIGINAL LOW PRICE MARKET

Smoked Tongues	A real buy and a delicacy Serve hot or cold Lb.	15c
Bacon Backs or Cottage Butts, lb.	Mild Sugar Cure	24c
Fancy Hens, lb.	Dry picked. Young. Fine for roasting	23c
Mutton Chops, lb.		15c

SWISS STEAK, tender beef, lb. 17 1/2c
RUMP ROAST Boned and Tied No Waste lb.

Beef Roast	Good shldr. cuts. Lb.	12 1/2c
STEAK	Sirloin, Rib or Small T-Bone Beef. Lb.	15c
Shortening	Veg Base. No fish oil. 2 lb.	27c

FRESH FRUITS and VEGETABLES
LETTUCE 3 for 13c
RHUBARB 3 lbs. 15c
BUNCH VEGETABLES 3 for 10c
AVACADOS each 5c
APPLES, NEWTOWNS box 19c

WITH THE VALLEY TRADE IS THE VALLEY MADE—BE WISE—BUY WISE—AND ECONOMIZE AT

Holloway's Reliable Grocery

W. A. HOLLOWAY, Owner 100% Independent—No Affiliations. PHONE 20

Our Speciality Is Groceries Only!

And we are going to keep this a Grocery Store

Besides LOW PRICES, brought to you by a large volume plus a low overhead. We Feature PERSONAL SERVICE EXPERIENCED CLERKS, who are always ready to serve you, FREE DELIVERY on any size order, Free PARKING LOT for your convenience. Here you will find a friendly, helpful FOOD STORE featuring the highest quality merchandise at prices that are winning great favor among thrifty housewives.

WESSON OIL Qt. Can a food that gives you "staying power" 43c

SNOWDRIFT, 6 pound can . . . \$1.15
Schilling Cream of Tartar Baking Powder 12 oz. 30c 2 1/2 lb. 85c

Royal Club Is Quality Merchandise
 GRAPEFRUIT, No. 2 can . . . 2 for 25c
SPINACH, large No. 2 1/2 can, 2 for 25c (New Spring Pack)
KRAUT, large No. 2 1/2 can . . . 2 for 25c
PUMPKIN, large No. 2 1/2 can, 2 for 25c
PINEAPPLE, sliced or crush., No. 2 17c
CRAB MEAT, fancy, No. 1/2 can . . . 29c

Tomato Juice Specials
Campbell's 10-oz. can 5c
Josephine County Brand No. 2 1/2 can 10c---No. 10 can 29c
Tomatoes, Sun Ripened, Std. No. 2 1/2 can 10c
Tomatoes, Solid Pack, extra fancy, can . . 15c

Cooked Food Sale Here Saturday by the Ladies of St. Ann's Altar Society of the Catholic Church

Apricots, Padre brand, No. 2 1/2 can 19c
Grapefruit Juice, Trupak, No. 2 can, 2 for . 25c
Mother's Oats with china. A real value at . 29c
Commercial Chocolates, 2 pounds 25c

FLOUR SPECIALS
Klamath Bouquet, 49-pound sack . . \$1.59
Kitchen Queen, 49-pound sack \$1.79 (Baseball Caps Free to Kiddies)
Drifted Snow, 49-pound sack \$1.95

ORANGES 80 size Extra large Doz. 32c
 ASPARAGUS Fancy long green 3 lb. 25c

RHUBARB Bohnert's Local 2 pounds 19c
LETTUCE Solid Heads 2 for 9c
SWEET POTATOES 6 pounds 29c

CAULIFLOWER Roseburg, U. S. No. 1 Large Heads 2 for 19c
Local Spinach 3 lbs. 19c

CITY MEAT MARKET
 121 No. Central Phone 324
FREE DELIVERY
Pot Roast lb. 15c
Rib Boil lb. 12 1/2c
Bacon lb. 28c
Boston Butts lb. 24c

There's a difference in the flavor of City Meats and it's in your favor
Shortening Vegetable, bulk 4 lbs. 45c
FANCY CHICKENS and RABBITS



A-t-t-e-n-t-i-o-n! Coffee's right! M-a-r-c-h! Everything's right when Schilling Coffee gives the marching orders.

Try Schilling Coffee. It's a sturdy Coffee. It's dependable—not fickle. Make it with reasonable care, and it "comes through" with delicious regularity.

Schilling Coffee
There are two Schilling Coffees: One for percolator. One for drip.