

# Dollars Spent for Home Modernization Pass Through Many Hands

**MANUFACTURERS,  
WORKERS, DEALERS  
ALL ENJOY SHARE**

**Repair Projects Set in Motion Lengthy Chain of Benefits With Thousands Participating Says Expert**

The modernization dollar circulates through many channels following the inception of a repair project, with the attending benefits to business, industry and labor as a whole. E. L. Gilbert, eastern editor of American Builder magazine, points out. Says Mr. Gilbert:

"The contractor who gets the money first, divides it about equally between local merchants who furnish materials and labor, the building products merchants who are dealers in lumber, hardware, paint, electric wire and fixtures, plumbing goods, sand and gravel, cement and mortar, roofing materials, brick, glass and other items, deduct a small amount for their profit.

**Workers Get Share**  
"At the same time these merchants employ clerks, stenographers, truck drivers, bookkeepers, sales people and miscellaneous workers, all of whom receive wages, salaries or commissions. In some cases local dealers pass the remaining money along to jobbers or wholesalers who employ other office, traveling and shipping room workers. The balance of the money eventually reaches the manufacturers who employ thousands of factory hands, office workers, traveling salesmen and others. The manufacturers, of course, must pay part of the money they receive along to operators of timber camps, mines, quarries, and other manufacturers who produce such basic products as steel, iron, gypsum, lime, wood-pulp, etc.

**Thousands Benefit**  
"At the end of its trip through the business world the money spent for home repairs and modernization, for instance, will be found to have brought a bit of cheer and well-being into the lives of many, many thousands of other people in all kinds of business."

Transportation also gets its share of the modernization dollar. Mr. Gilbert points out, thereby helping to pay the wages of railway, steamship and other common carrier workers. Also aided are the businesses not usually associated with building at all, such as the great fire insurance companies, banks and brokers, lawyers and publishers and others indirectly serving the building industry.

**STEPS OF HOUSEWIFE  
REDUCED BY MODERN  
PLANS FOR KITCHEN**

Science has entered the kitchen. In the planning and arrangement of that part of the home in which the housewife spends so much of her time, architects and home economists have accomplished much in recent years, with the saving of time and steps as their objective. The poorly located sink or refrigerator may add two or three steps for the housewife each time she uses them, or the lack of cupboard and work space at certain points in the kitchen might easily double the labor entailed in the preparation of a single meal. In one year this would be comparable to preparing and clearing some 2,000 meals instead of the average 1,905.

The best planned kitchens have the three major pieces of equipment—refrigerator, sink and range—so arranged with work space, that steps are reduced to a minimum.

Entering the kitchen from the outside, the refrigerator should be first, then a work space with the sink and drip board next in line. Another work space should separate this from the range, and it might be a good plan to have still another work space between the range and the dining-room door. If the outside door and dining-room door are close together, going through the kitchen will not interfere with work. This, however, is not always possible, and when it is necessary to separate the line of equipment with a door, create a work space by the isolated piece if that is possible. Separate the range and sink rather than the sink and refrigerator.

Work space can be built-in cabinets with shelves above, or they can be small work tables.

The placement of smaller equipment in logical places will also save steps. Staple supplies and used utensils should be at the refrigerator work space. Tea, coffee, measuring spoon, pots, pans and coffee pot should be in the work space. Dishes, etc. at the sink.

This kitchen arrangement can easily be placed in a room of ten feet by twelve or nine by fourteen, leaving ample space for a desk and chair where receipt and menu books can be kept and towels planned.

CHICAGO, Mar. 4.—(AP)—Following three years of negotiation, reorganization of the Long-Bell Lumber company appears to be an early possibility. C. T. MacNeill, of Halsey, Stuart and Co., said today. MacNeill is chairman of the first mortgage bondholders' committee and his firm has been appointed reorganization manager.

Ask the customers who have their watch repaired by the Johnson Jeweler.

# Wards March of Values

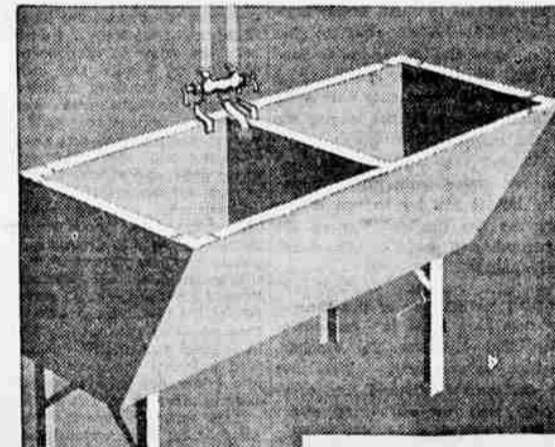


**42<sup>65</sup>**  
\$5.00 DOWN  
\$5 Monthly, Small Carrying Charge, Complete with Fittings

**First Quality! Yet See Wards Low Price!**

No better quality porcelain enamel, vitreous china or chrome-plated fittings made! See the roomy tub, quiet closet, smart lavatory!

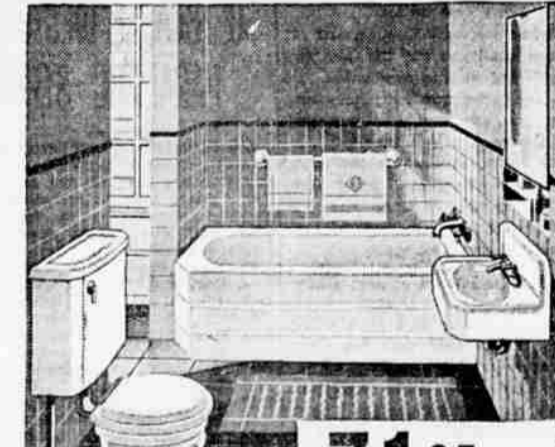
*Pieces Sold Separately*  
Tub, \$23.25 Lavatory, \$9.65 Closet, \$13.45



**12<sup>45</sup>**  
Fittings Extra

**Smooth Leakproof Tub, Galvanized Metal Rims**

Clothes are safe from tearing in this seamless one-piece tub of granite composition with metal bound edges. Just the right proportions to make laundering easy. And see Wards low price!

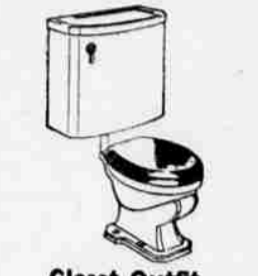


**71<sup>95</sup>**  
\$7.00 DOWN  
\$1 Monthly, Small Carrying Charge, Complete with Fittings

**Smart, Modern Lines! See Wards Low Price!**

First quality, too—the porcelain enamel, the vitreous china, the chrome-plated fittings! Roomy tub. Shelf-top closet tank! See it!

*Pieces Sold Separately*  
Tub, \$48.25 Lavatory, \$15.50 Closet, \$14.45



**Closet Outfit**  
**\$13.45**

First quality vitreous china Siphon wash-down bowl with jet! Complete! Low priced!



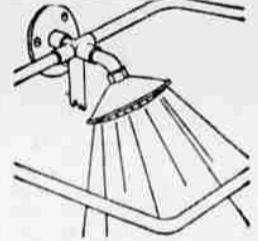
**Modern Lavatory**  
**\$14.45**

Attractive modern design! First quality enamel finish! No finer quality!



**Cast-Iron Sink**  
**\$3.55**

One piece! First quality porcelain enameled inside, over rim! See the low price!



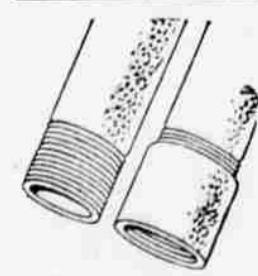
**Big Roomy Shower**  
**\$4.25** Frame 24x30 In.

Oblong frame for more room! Adjustable head! Chromlumped!



**Pipe Fittings**  
**5c to 55c**

No finer galvanized pipe fittings made! All types. Save at Wards low prices!



**Galvanized Pipe**  
**5 1/2c** Per Ft. 3/4 In.

No finer made! Tested to 700 lbs. pressure per square inch. See Wards low price!



## SALE OF ROOFING!

For One Week Only—Or—While Our Stock Lasts, We Offer These Sale Prices! Buy Now!

**GREEN HEXAGON STRIP SHINGLES**

Our regular \$6.00 brand of shingles, weight 180 lbs. per square. Fire resistant! Easy to lay! Each bundle contains 50 square feet. Buy 2 bundles (100 sq. ft.) this week only, for the give-away price of..... **\$4<sup>19</sup>**

**GREEN RADIO SLATE ROOFING**

A roofing you will be proud of! It weighs 87 lbs. per roll and is complete with tacks and tar for laying. A roll covers 100 sq. ft. Regular price is \$3.00 per roll. Buy it this week only, while our stock lasts, at..... **\$1<sup>98</sup>**

**DAMAGED WAREHOUSE STOCK OF GRAY SHEATHING**—500 sq. feet per roll. One end of roll damaged by water. 80 per cent or 400 sq. feet will salvage. Regular price \$1.00. While it lasts—20 lb. sheathing—roll **29c**

**No Finer Sill Pipe Made! Save at Wards!**

**1<sup>00</sup>**

5 Foot Lengths single Hub, 3 In.

It's coated inside and out with rust-resisting tar! Extra heavy weight at comparable prices. All fittings for both weights. Save at Wards low prices!

**50<sup>95</sup>**  
\$5.00 DOWN  
\$5.00 Monthly, Small Carrying Charge

**All the Water You Need for a Few Cents Daily!**

Completely automatic! 250 gallons an hour! 18-gallon storage tank and pump galvanized inside and out! Finest type pump and motor! Maintains city pressure! For wells 22 ft. deep or less.

**81<sup>45</sup>**  
\$8.00 DOWN  
\$8 Monthly, Small Carrying Charge

**No Smoother Water System at Any Price!**

Completely automatic! Completely redesigned to embody every worthwhile feature! Big 42-gallon galvanized storage tank. Pumps 450 gals. an hour. City pressure. For wells 22 ft. deep.

**Pressure Tested to Twice Needed Strength!**

**11<sup>25</sup>**  
30 Gal. Size

Riveted and welded range boilers! They are hot-dip galvanized inside and out, the best known method for preventing rust and corrosion. Made of heavy steel plate. Save!

117 SO. CENTRAL  
TELEPHONE 286

# MONTGOMERY WARD