

AUTOMOTIVE NEWS

NEW GRAHAMS ARE SHOWN BY WALTER ABBEY FIRM HERE

The first new Graham six in the low price field to arrive in Medford is on display at the Walter Abbey show rooms on South Riverside where it is attracting considerable attention along with the new "Special Six" Graham for 1935. C. C. Collins, representative of the Windolph company, distributors of Graham cars in Oregon, drove the new automobile to this city from Portland the end of last week for special showing today.

In styling the new Graham six is similar to the other Graham models and is built throughout with characteristic precision. Its producers say the car will show decided savings in fuel consumption.

An interesting feature of the smaller Graham is the built-in luggage compartment which is constructed as part of the streamline. The engine is of the L-head type which develops 60 brake horsepower at 3,500 R. P. M. It has a bore of three inches, a stroke of four inches and displacement of 169.6 cubic inches. The engine is mounted to the chassis in three rubber cushions to eliminate vibration. There is safety glass throughout and Graham's well known "outboard springs."

Dedecorating of the Abbey display rooms has recently been completed to make a more attractive setting for the handsome new cars.

Two truckloads of International trucks were unloaded by Walter Abbey during the past week. John Davis, of Jacksonville, took delivery on Thursday of a new C-35 International truck; Gilman's dairy, a C-1 model and J. B. Gracey, of Ashland, purchased his second International in six months, according to Walter Abbey.

HOOVER DECLARES TRIP ON BUSINESS

CHEYENNE, Wyo., Feb. 9.—(AP)—Former President Hoover sat back in his observation car chair and grinned.

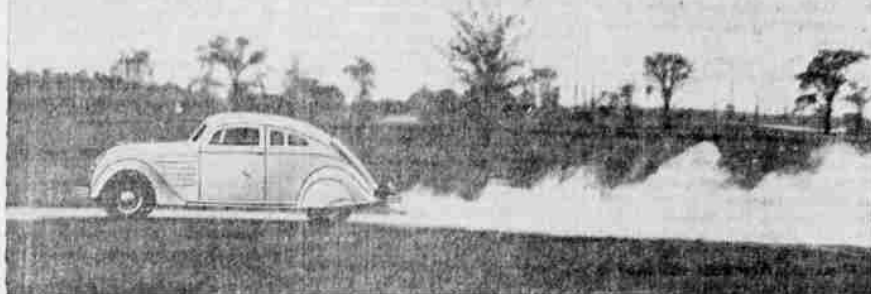
"I'm going to New York for a meeting of the board of directors of the New York Life insurance company and while I'm there I'll also attend directors' meetings of two charitable organizations in which I'm interested."

"And that," he added with a decisive wave of his after breakfast cigar, "is positively all the significance there is to my present trip east." His accent was particularly heavy on the "all."

During the brief stop on the former president's train here this morning he was met by a delegation of Wyoming political and business leaders.

CHICAGO, Feb. 9.—(AP)—Sleet today slowed traffic to a snail's pace and halted all planes scheduled at the city's airport, while weather forecasters predicted further sleet or snow during the day.

SLOW-MOTION CAMERA PROVES AIRFLOW WORTH



A CHRYSLER AIRFLOW . . . NO TURBULENCE

A very practical demonstration of the manner in which the Airflow design eliminates "wind-drag" or suction, one of the biggest factors in wasting power and fuel in a car of ordinary design, features a motion picture prepared by Chrysler for its dealers. This picture shows in slow-motion how a column of smoke continuously generated in the engine and sent out through the exhaust flows smoothly away from the contour of the Airflow car. The air currents meet behind the car without turbulence or vacuum effect. It is this absence of air disturbance that helps to give the Airflow car its exceptionally high gasoline mileage, as proved by a transcontinental run from Los Angeles to New York in which an Imperial Coupe averaged 18.1 miles to the gallon. It also was a factor in the speed run conducted on the Utah salt beds last summer in which the Imperial Coupe created 72 A. A. A. Contest Board closed stock car speed records.

Luggage Problem Solved by Dodge



There's room for trunks, grips, suitcases, parcels—even for spare tires.

Gone are the days—at least for owners of new Dodge models—when motor car passengers had to share the comforts of the tonneau with grips, suitcases and other travel appurtenances. It is different now. Not only luggage, but the spare wheel and tire are carried in the rear, in the space which, when closed, looks like a trunk and affords room for more things than a motoring trunk ever held before.

An idea of the manner in which the luggage question has been solved in

the new Dodge models, is given in the accompanying illustration showing at the right the touring trunk divided into two sections, the upper one serving as luggage space, the lower one as spare tire compartment.

In cases where the owner prefers to carry the spare tire equipment forward, in fender wells, the entire trunk compartment is available for luggage.

British Speed Ace Will Attempt Stock Car Record Monday

Sir Malcolm Campbell, British speed king, now at Daytona Beach, Florida, preparing for his attempt at new world's records with his famed and winged bluebird automobile has announced that he will attempt to break all class C stock car records on Monday, February 11, according to a wire received here today by C. W. Ellis, sales supervisor for the Gilmore Oil company in southern Oregon.

The wire stated that Sir Malcolm's attempt to establish new stock car records will be made over the same course that he will cover on his Bluebird record runs. For the purpose he has selected a leading American car, a standard stock Hudson eight-cylinder sedan, equipped with an automatic gearbox. The car will carry full equipment as required by the A. A. A. under whose supervision the run will be made.

Preliminary tests of motor fuels prompted Campbell to select a California gasoline for these important record attempts. Gilmore Red Lion gasoline and Lion Head motor oil will be used by him to drive the powerful Hudson over the sands of Daytona at speeds well over current records, even though the beach is several miles slower than other record courses.

The motor world is looking on the Campbell run as a real test of car and fuel. Speed authorities, Hudson officials, Gilmore and Campbell are confident that with this equipment some outstanding records will be set next Monday.

New Coach Rumored DENVER, Feb. 9.—(AP)—Semi-authoritative reports today said that on February 22 the University of Colorado will announce that Bernard F. (Bunny) Osakes, former pride of the marines, will take over the football coaching position vacated by W. H. (Navy Bill) Saunders.

Ernie Calkins to Handle Reo Trucks And Cars in City

Ernie Calkins, who recently opened a reconditioned automobile establishment at 22 South Fir street in this city, has been selected as Medford dealer for the Reo line of cars and trucks. The appointment of the local firm is now effective and already three Reo sales have been effected, according to Calkins.

The new Reo has a smart, streamlined body and many features that make it one of 1935's outstanding cars. A wide range of truck models are featured in conjunction with the passenger car line.

When it comes to radios, remember "Pruitt's can do it." Phone 32

The AUTO WAY.



By Cyril Sander

Graham has this year entered the low price field with a small car in direct competition with the other manufacturers. This small car is a Graham through and through. It has all of the well known features that have been embodied in all of the latest Graham cars such as barjo frame, full length water jackets, outboard springs, and hydraulic brakes. Though this new car has only sixty horsepower it is said that it has amazing performance and exceptional economy. We are told that these cars have the same smart interiors. The larger cars have, and which are certainly very good looking. A feature about these cars that has always appealed to us was their apparent roadability. Very evidently this is obtained by their wide tread and outboard springs. These new Graham's are to arrive this week-end and I am very anxious to see the actual car. The new "Special" is in Medford now, however, and is attracting a lot of attention on Medford streets.

The new Member DeLuxe Chevrolet has made a number of improvements over last year's car. For instance, this year they have the new famous "turret top" which General Motors has introduced along with a counter-balanced crankshaft, positive pressure oiling system, downdraft carburetion and knee-action. The wheelbase has also been increased this year and the whole appearance of the car, though it is still distinctly Chevrolet, has been greatly improved. We believe that their coupe models are especially attractive because of their treatment of lines around the passenger compartments and down the back, and of course the "turret top" adds considerably to their appearance.

A feature of the new Plymouth which I have never mentioned is their "calibrated ignition." This is an entirely new feature which makes it possible to get maximum performance from any type of fuel, and still not have the so-called "ping" which has formerly been common in cars with high compression heads. This is especially noticeable when the car is pulling hard and the motor is somewhat taxed. This "calibrated ignition," according to salesmen, should add considerably to the economy of the car.

J. LARSON INSTRUCTS RADIO SERVICE MEN

J. L. Larson, RCA-Victor representative, gave the fourth of a series of technical discussions on "The Design and Testing Features of the Modern Radio," at the Palmer Music Store, last night. The lectures are given for all radio service men in the vicinity of Medford.

These series of meetings are in addition to Mr. Larson's regular monthly trips to Medford to inspect the sound equipment of the local theaters.

Use Mail Tribune want ads

EXTREME USES OF V8 TRUCK SHOWN

The entirely different work for which the new Ford V-8 double duty truck may be used is being demonstrated in Medford by the recent sales of Ford trucks to the Texas Oil company and Fluhrer's Bakeries, according to C. E. Gates of the C. E. Gates Auto company.

The Texas Oil company truck is used for heavy duty work. It carries 1000 gallons of Texaco gasoline which weighs four tons. The truck purchased by Fluhrer's Bakeries is used for high speed highway work. This truck carries a light load of 1500 pounds.

Mr. Gates says the efficient operation of the two trucks proves that the new Ford V-8 is adapted for all kinds of work.

LONG BEACH SEES END OF DOWNPOUR

LONG BEACH, Cal., Feb. 9.—(AP)—Refugees of southern California's severest flood of the year saw a figurative rainbow in weather forecasts today and prepared to return to their inundated dwellings.

In some parts of the State street area a lake half a mile across and so deep in places it reached the roofs was formed during the storm which began early this week and brought 27 inches of rain. This made 14.68, as compared to 4.72 for this time a year ago.

The weather bureau forecast partly cloudy skies today, with moderate temperatures and gentle to moderate winds.

Phone 542. We'll haul away your refuse. City Sanitary Service.

BARGAINS IN GOOD USED TRUCKS



Here are some EXCEPTIONAL BUYS IN RECONDITIONED USED TRUCKS . . . Every one good for thousands of miles of satisfactory service . . . Here is an opportunity to SAVE the initial truck depreciation and get a GOOD TRUCK at an AMAZINGLY LOW PRICE!

- 1934 CHEVROLET 1 1/2 Ton Truck, long wheel base, dual wheels, and factory rack. You can buy this one right.
- 1932 STUDEBAKER 2 1/2-3 Ton Truck, with 34x7 duals. Here is a real buy.
- 1930 CHEVROLET 1 1/2 Ton Truck with hardwood grain box. Single wheels. Completely overhauled.
- 1930 CHEVROLET 1 1/2 Ton Truck with dual wheels and 4 new tires.
- 1928 CHEVROLET 1 1/2 Ton Truck, long wheel-base, good tires, a real buy.

ROGUE RIVER CHEVROLET, Inc.
USED CAR LOT
25 South Riverside Avenue

We Have Just Unloaded— ANOTHER CARLOAD of the smart new Dodge Automobiles

This shipment includes a TOURING SEDAN model with the spacious, convenient touring trunk as well as a low, streamline coupe with rambler seat. . . You'll find these various DODGE models outstanding in ultra-modern streamlining and flowing beauty!

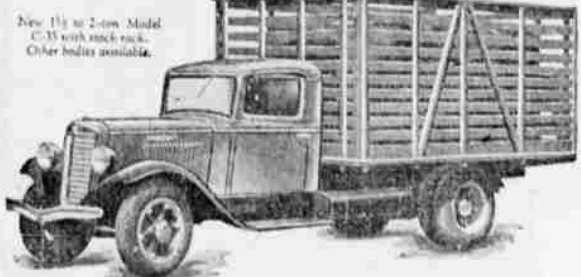
WE'RE OPEN TODAY

Come in—see the new DODGE models NOW ON DISPLAY and, of course, there are the smart, conventional-type sedans, too. The new PLYMOUTH models are also on display.

PIERCE ALLEN MOTOR CO.

112 S. Riverside Dodge and Plymouth Dealer Phone 150

STURDY through and through



ONE OF THE NEW INTERNATIONALS

The best way to judge a truck is to try it out on some of your own loads. That's how we want you to judge these NEW Internationals.

But meanwhile . . . see if this doesn't strike you as a good explanation of why Internationals can do the job better, and do it more economically.

For twenty years, Harvestor has built trucks that are ALL-TRUCK . . . made only of TRUCK PARTS . . . and planned specifically to do a TRUCK'S WORK. No automobiles—hence no "compromise-construction" in any least detail.

Phone us for a demonstration.

Sizes, 1 1/2-ton to 10-ton; Chassis prices, f. o. b. factory from **\$390 UP**

Walter W. Abbey, Inc.
Nash, Graham, Willys 77 LaPayette, International Trucks Sales and Service. 123 South Riverside



Two Extreme Uses of the New Ford V-8 Double Duty Truck

TEXAS OIL COMPANY, Medford, carrying 1000 gallons of gas which weighs FOUR TONS. This truck being used for heavy duty work.

FLUHRER BAKERIES, MEDFORD, carrying 1500 pounds of Bakery products. This truck being used for high speed highway work with a light load.

We would be glad to demonstrate this New Ford V-8 Double Duty Truck to you and show how it will handle your trucking problem.

C. E. GATES AUTO CO. YOUR FORD DEALER

PHONE 141 MEDFORD, ORE.