

# AUTOMOTIVE NEWS

## 1935 OLDSMOBILE SHOWN IN MEDFORD

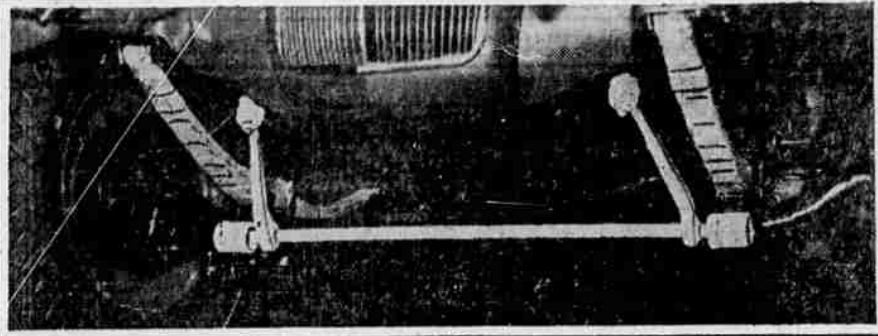
The new 1935 Oldsmobile has arrived in Medford and is on display at the J. J. Owenbrugges salesrooms, located at 132 South Riverside.

"The new Oldsmobile line for 1935," said Mr. Owenbrugges, "is representative of Oldsmobile's belief that the public is entitled to all that is new and better. Rather than remove from its products features that have proved their worth and desirability in millions of miles of service, Oldsmobile has elected to keep these features, and add all the latest important engineering advancements.

"For example," Mr. Owenbrugges continued, "Oldsmobile is retaining such features as knee-action wheels, super-hydraulic brakes, ride stabilizer, center-control steering, and all-steel synchro-mesh gear shifting. "In addition to these and many other time proved fundamentals of design," said Mr. Owenbrugges, "the 1935 Oldsmobiles offer the purchaser that greatest of all body advancements since the introduction of the closed car. This is the new solid steel 'turret top' body by Fisher, with steel above, steel below, and steel all around for the extra safety of driver and passengers. The new top, a single piece of seamless steel built integral with the body proper, contributes importantly to the advanced new streamline beauty which characterizes the new Oldsmobiles."

"It is important, too, to the buyer seeking the maximum for his money, that the new Oldsmobiles show, and eight are larger, more powerful and even more economical. The wheelbase of the six has been increased to 115 inches. The eight is increased to 121 inches. An idea of the roominess may be gained from the fact that the front seat in the six is now three inches wider than that in last year's eight."

## New Spring Discovery for Next Year's Cars



A REVOLUTIONARY type of steel that has enabled automobile engineers to develop new tapered-leaf springs for the 1935 Plymouth, has been perfected in Detroit, it was revealed today.

The new spring material is called Mola steel. It is a carbon molybdenum steel, combining unusual flexibility with great tensile strength.

With the development of Mola steel, automotive engineers were able for the first time to create a short spring that

is soft and resilient, as well as durable. The metal produces a spring leaf that can be used thin enough to give the required flexibility.

The above picture shows the new springs and the front-and side-way eliminator or ride-stabilizer. The springs have the unusual characteristic of two main leaves, each of which is wrapped around the shackle bolt. The lower leaf is segmented at the center to allow for elongation. The leaves are tapered down at the ends, so that more

area comes into contact with the adjoining leaves.

The entire weight of the car has been re-distributed. It is the same on both axles now, whereas previously the rear axle supported 60 percent and the front axle 40 percent. Front end bounce is controlled by new double-action shock absorbers, which definitely add to the comfort of rear seat passengers. The side-way eliminator is a torsion bar which acts as a third spring—when it is needed—to keep the car on an even keel.

## Reese Creek

REESE CREEK, Jan. 12.—(Sp.)—Mrs. John M. Freese returned home January 6 after a week's visit with her parents in Medford.

Mr. Freese recently opened up a garage on the Crater Lake highway, near Hog creek.

Friends of Mrs. Frank Hill will be sorry to hear that she is still confined to her bed at the Community Hospital in Medford.

Mr. and Mrs. Wilbur Erickson returned home January 3, after two weeks vacationing in Idaho. They say

Oregon looks good enough for them.

Dr. Dodson of Medford was called January 6 to the home of Arnold Shrank, who has been very ill with flu and complications, but at this writing is reported greatly improved.

Mrs. M. Lucas who was taken to Medford one day last week suffering from effects of the flu, is still at the hospital.

The community extends congratulations to Mr. and Mrs. Jimmy McDowell of Antelope. Mrs. McDowell will be remembered by her many Reese creek friends as Mary Jacks.

Those knowing Marie Woods will be glad to hear she is improving as rapidly as possible, and that ampu-

lation of her foot is not necessary, as was at first thought.

## SITE FOR MALT PLANT OBTAINED IN VANCOUVER

VANCOUVER, Wash., Jan. 12.—(AP)—Officers of the Great Western Malt-plant company today signed a property lease with the port commission here for a tract upon which a \$300,000 malt-plant will be constructed.

A. I. Blitt of Portland, president of the Blitz-Winehard Brewing company, is president of the corporation.

A. A. A. WEAR BETTER CLOTHES Suits and O'coats to measure, \$21.50 up Klein the Tailor. Upstairs

## NEW 1935 AIRFLOW SHOWN IN MEDFORD

A new 1935 Chrysler Airflow 8 sedan arrived in Medford yesterday, driven from Portland by H. P. Lange of Armstrong Motors Inc., Chrysler and Plymouth dealers in Medford and Klamath Falls.

The new Airflow is equipped with the famous Chrysler overdrive which gives the car five speeds ahead instead of the usual three speeds.

Mr. Lange says: "This is the finest motor car I have ever driven and it gives one the nearest sensation to flying of any automobile built. The new Chrysler overdrive transmission is the only successful overdrive ever built in the United States. This new device gives the car a much greater gas mileage and it prolongs the life of the motor as much as 40 per cent."

Use Mail Tribune want ads

## THE AUTO WAY

(continued from page 5)

distinctive hardware, and a new dash board.

The new Studebaker which is now in town has a new type of Independent Planar Wheel Suspension which employs the transverse springs in an entirely new way. This suspension is coupled with automatic ride control shock absorbers and it practically abolishes side-way and road bumps. The new car has many improvements such as automatic choke, automatic spark control, and new direct-action steering. The treatment of the radiator and hood gives the car a very smart appearance, while the interior is improved by a dash board of different design.

Back from Pasadena—Mrs. J. A. Shepherd, who has spent the last month with her parents at Pasadena, has returned to her home in this city. Mr. Shepherd, of the Crater Lake national park service, also spent several days during the holidays in Pasadena.

## JACKSON COUNTY HIGH IN TRAFFIC LAW CONVICTIONS

Statistics issued yesterday by Ward McReynolds, state examiner for driving permits, indicate that Jackson county police are among the most vigilant in the state, in that this county ranks third, exclusive of Multnomah, in traffic violation convictions.

Only Marion county with 32 convictions and Columbia county with 25 had a higher record than Jackson.

Klamath county had 8 and Josephine only 4. This may mean, according to McReynolds, that not as much attention is given in those two counties to the small violations, such

as failure to look in the rear view mirror in parking, signaling for turns, and similar violations.

However, he pointed out, these little things are directly responsible for an appalling number of deaths in the state each year.

Most of the failures in the tests given for drivers permits are due to non-attention to these details, he stated, and that defect is found in old drivers as well as new.

There were 41 licenses issued Friday, and about that many yesterday. The average for the entire state is between 40 and 50 a day, McReynolds said, and pointed out that 40 per cent of the people applying for licenses in Oregon for the first time are from out of state, mostly from California.

Sales Manager Visits—C. G. Walker, sales manager in Oregon for the General Petroleum corporation, was in Medford yesterday conferring with Ted Higgins, southern Oregon district manager of the company. Mr. Walker left yesterday for Los Angeles, where he will hold a conference with company officials from the south.



# NOW IT'S HERE

## The Greatest Motor Car Ever Built By Walter P. Chrysler---The 1935 Chrysler 8 Airflow

... with the famous CHRYSLER SILENT OVERDRIVE TRANSMISSION reduces engine speed 1000 R. P. M., giving longer life to the engine and greater gasoline mileage... The only successful overdrive ever built! HAS FIVE SPEEDS AHEAD!

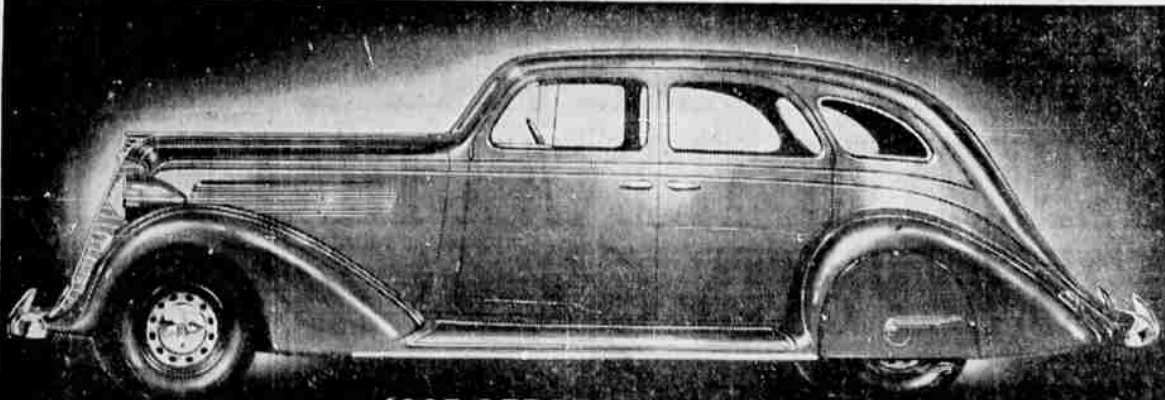
Have you seen the sensational new CHRYSLER AIRSTREAMS? They are NOW ON DISPLAY along with the new 1935 PLYMOUTH LINE . . .

## Armstrong Motors, Inc.

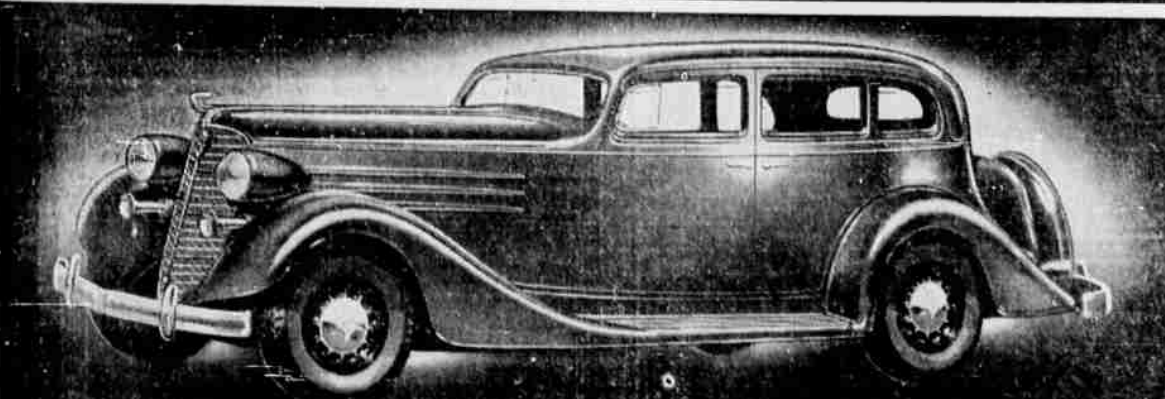
38 North Riverside Phone 13

# DOUBLE ANNOUNCEMENT

## NASH & LAFAYETTE NEW 1935 MODELS HAVE ARRIVED



1935 AEROFORM NASH BEAUTY • POWER • ECONOMY • RIDE



1935 LAFAYETTE FINE CAR OF THE LOW PRICE FIELD

See Them At

NASH PRICES \$895 to \$1290 F. O. B. FACTORY

WALTER W. ABBEY, Inc. 123 So. Riverside Phone 303

LAFAYETTE PRICES \$585 to \$750 F. O. B. FACTORY



Second-Hand Tire Blows; Kills Driver GRAND RAPIDS, Mich., Nov. 13.—(By International News Service.) Explosion of a second-hand tire by claimant.

Don't let THIS happen to you!

Why take chances with "Seconds," "Retreads" or inferior quality tires when you can get Wards famous

## RIVERSIDE RAMBLERS

for as little as \$4.80



RIVERSIDE RAMBLERS MOUNTED FREE

Riverside Ramblers are built of first grade materials by the same nationally famous manufacturer who makes Wards finest and most expensive tires! Built to War- rigid quality specifications . . . full cross-section width and height . . . Vitalized rubber . . . Center traction tread . . . Latex-dipped cords . . . four full plies plus two cord breaker strips.

It's these quality features that enable Wards to back Ramblers with a guarantee of satisfactory service without limit as to number of months or miles . . . It's these quality features that make Ramblers America's best value in low priced tires!

Other Sizes at Similar Savings

4.40-21	4.80	4.75-19	5.80	5.00-20	6.20
4.50-20	5.10	4.75-20	5.75	5.25-18	6.65
4.50-21	5.30	5.00-19	6.00	5.25-21	7.30

Ask About Wards Convenient Budget Plan Payments

## MONTGOMERY WARD

117 SOUTH CENTRAL TELEPHONE 286