

NOVEMBER DIVIDENDS SHOW HANDSOME GAIN

NEW YORK, Dec. 14.—(AP)—November cash dividend increased on 500 common stocks, according to

Moody's amounted to \$26,700,000, which represents the largest gain for a single month since November, 1933. Since the low point of June, 1933, says the service, cash dividends on these stocks have increased by \$199,000,000.

HITLER'S TRAIN KILLS 13 PASSENGERS IN BUS

BERLIN, Dec. 14.—(AP)—An express train in which Reichsfuhrer Hitler was riding killed 13 persons

tonight when it struck an autobus near Verden. The casualties, besides the dead, were four persons seriously and three slightly injured.

See Mail Tribune want ads.

One Industrial Death
SALEM, Dec. 14.—(AP)—Accidents in Oregon industries during the week ending December 13 numbered 506 and resulted in one death, the state industrial accident commission reported today. The worker killed was

G. A. Stone of Bristol Vail, a book binder.

See Mail Tribune want ads.

and beloved counsel for the youth of Portland, has been named Portland's "first citizen" for 1934. The selection is made each year by the Portland Realty Board.

See Mail Tribune want ads.

TIGER BASKETEERS VIE FOR POSITION ON FIRST QUINTET

Thirteen Candidates for Burgher's Favor—First Game Probably Played Next Week-End, Announcement

(By Harold Grove)
With thirteen men, "the cream of the crop of the Medford high school basketeers," under Coach Darwin K. Burgher, basketball was officially launched at the Medford high school Wednesday night.

Those who trocked across the maples for the first time this season were: Bob Smith, Don Stewart, Ray Lewis, Russ Brown, Ray Ettinger, Bob Hinman, Stan Kuzman, Sam Van Dyke, Bill Luman, Harvey Sears and Lewis Campbell. Bill Bates and Ole Severson are to be added to the list but were not on the floor Wednesday night.

Russ Brown received the first injury of the season, twisting a knee while practicing guarding. It was an old injury. He received the first hurt in the Washington-Medford football game on Turkey day. Don Stewart complained of a sore ankle, also hurt in the Turkey day tilt.

After watching the boys practice, material for a team to beat the other exponents of the Southern Oregon doesn't look so bad, even though three of them graduate at the mid-term.

Three Coming Fast
Three boys who will probably be among the chosen few before the season is over are Sam Van Dyke, Harvey Sears and Ray Lewis. Van Dyke won his laurels when he added the coup-de-grace in the Ashland-Medford "civil war," clinching the 1933-1934 Tiger basketball schedule—the final score, Medford 20, Ashland 24.

Sears, a transfer from Phoenix high school, is a rangy lad with a good basket eye and with a little practice in the Medford style of basketball should prove a dangerous weapon for the Tigers to use in their future battles.

Lewis, who transferred from St. Mary's high school, along with Bob Smith, will also prove fatal to opponents once he gets going.
Lewis is a direct descendant from the long line of Lewis boys who dominated athletics at St. Mary's academy for so long a time. He is short but a smooth basketball player.

Have Tall Center
For the first time in many a moon the Medford high basketball team will have the tallest center in the Southern Oregon league. He is Ray Ettinger, 6 feet 4 1/2 inches. He isn't much taller than Hard of Ashland, but he is the tallest, unless Klamath Falls slips in a "dark horse," or Grants Pass pushes in a "bean pole." Because of his height, Ettinger has acquired a new nickname — he is called "Stretch" instead of the usual "High Pokey," "Slim," etc. He is assured a position on the first string at center if he can control his equilibrium.

Other players who are more than likely to break into the first five before the season gets well under way are: Luman, a smooth ball handler and expert basket shooter at a forward post; Kuzman, clever and staunch at a guard position; Smith, flashy and accurate passer, with a good eye and also a good guard at either a guard or forward post; Van Dyke, a percentage artist at basket shooting at the other forward position.

No Set-Up Games
There will be no set-ups in the "Tigers' schedule" as far as can be noted. All the other basketball teams in southern Oregon are well under way, while the Medford boys are just getting started.

Klamath Falls, Ashland and Grants Pass have the same teams they had last year with the exception of Klamath Falls, which will be minus the services of Earl Miller, their ace scorer; and Ashland, Baughman, co-holder of the first string guard position with Bill Jungstern.

Coach Burgher stated this morning that the first game of the season will probably be this coming Friday or Saturday. The opponent has not been settled. Burgher is trying to get the toughest team possible at this stage of the game. Either some local quintet or a secondary school will be selected.

DANCING PARTY TO HONOR GRID TEAM
Through the sponsorship of the Medford High School Boys' League, the Medford Tigers, co-champions of Oregon state prep football, will be honor guests at a dancing party to-night at the Medford senior high school, starting promptly at 8:30.

In keeping with the occasion, decorations will pertain to football. All members of the football squad are cordially invited to attend free of charge. However, a small admission will be charged outsiders and students to help in the orchestra expense and other miscellaneous, necessary expenses.

A popular dance band will furnish music for the evening and a good time is assured all who attend. The dance will start at 8:30 and will close around 11.

Parents are cordially invited to attend and partake in the festivities.

ATTENTION: The Featherweight Portable Singer Sewing Machine can now be seen at No. 3 North Bartlett. Singer Sewing Machine Company.

READY FOR ANOTHER GREAT WARD SATURDAY



Varnish for Toys
57c pt.

Puts a tough protective film on toys. Withstands hard wear. Quick drying, too.



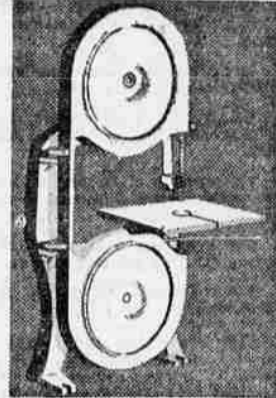
Dry-Fast Enamel
60c pt.

Bright colors for toys! Easy to apply on wood or metal! Durable, washable! 16 colors.



"Winter King"
\$5.25

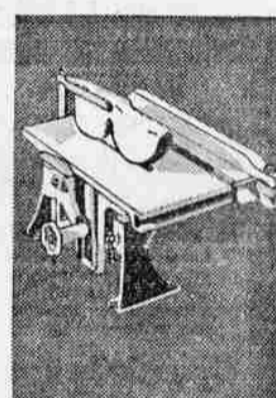
13 Plates
With Your Old Battery
47% more power than S.A.E. requirements. 18 mos. service. Winter King (13 plates) \$9.75



Power-Kraft! Extra-Heavy 9-In. Band Saw

\$13.75

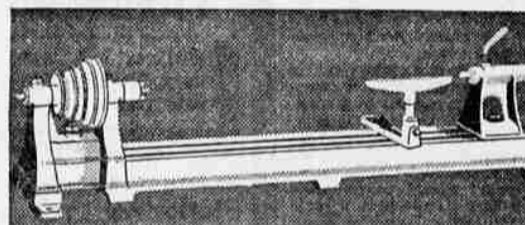
Heavy cast iron! Cuts to center of 18-in. circle! Takes 4 1/2-in. wood! Heavy frame! Roller guide! Safety guard! Table tilts on heavy trunnion — unusually rigid! Come see it!



Big 7-In. Saw! Table Raises, Lowers... Tilts!

\$18.75

Power-Kraft! No belt adjustments... table raises and lowers, not blade! Cross-cuts, rips, miters, grooves with accuracy! Weighs 31 lbs.! All these extra features at Wards low price!



Husky 21-Lb. Power-Kraft Lathe!

\$4.95

27 inches between centers! 8-inch swing! Thrust ball bearing reduces wear... power required! Big head, tail stock! Cast iron throughout!



Men's or Boys' Model as Shown

\$27.95
\$5 Down
\$3 Monthly
Carrying Charge.

Buy the Finest Bikes in America at These New Ward Low Prices!

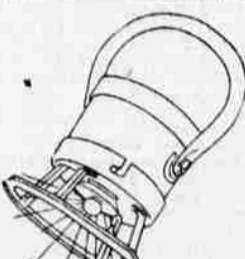
Just one thing makes possible quality like this at this low price: Wards large purchasing power and economical method of distribution! That's why you get Vichrome enameled frames (9 times harder than ordinary enamel); stainless steel mudguards; big air cushion balloon tires that float over bumps; chrome-plated, non-tarnishing fittings—all at Wards low price! Come see them!

- Boys' Duralum Bike with Air Cushion Balloon tires **\$41.45**
- Single Bar, Regular Tires **\$25.45**
- Boys' Motor Bike **\$36.45**
- Girls' Bike, Balloon Tires **\$29.95**



5-Cell Flashlight
\$1.00

Dependable! Brass case, nickel plated. Throws beam 1200 ft. Less batteries! Mazda bulb.



Electric Lantern
89c

Railroad style. Uses 4 flashlight cells. Without batteries. Mazda bulb. A buy!



Sandwich Toaster
\$1.39

Double sandwich size. Toasts bread, fries bacon! Nickel plated top. Electric! See it!



Cream Whipper
\$1.98

Modern design with on and off switch! Green and ivory finish. 16-oz. glass bowl—low priced!



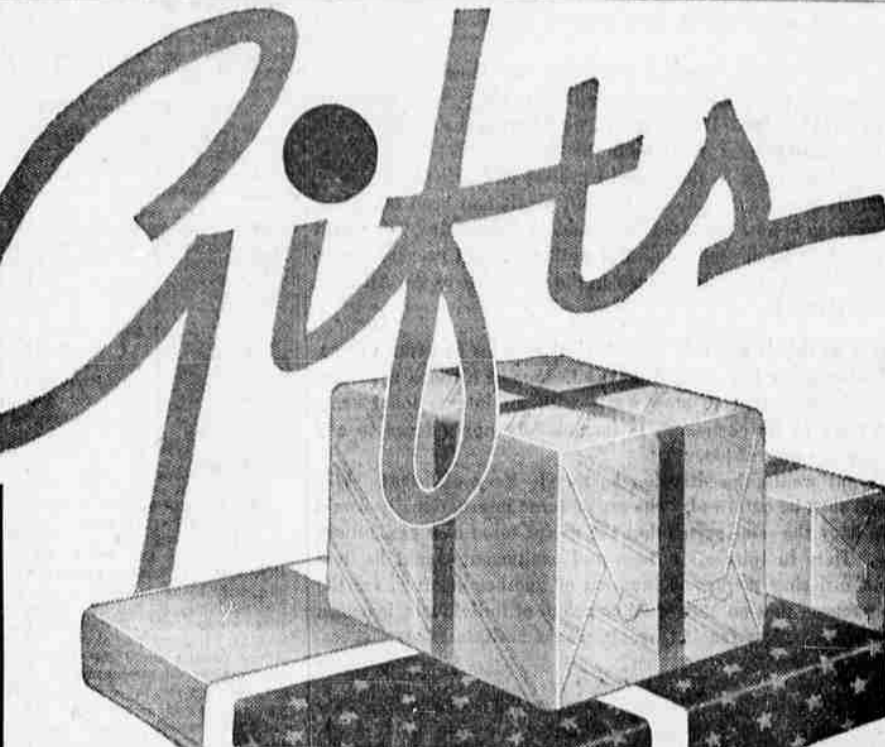
Large Percolator
\$1.49

Big 3-cup electric percolator at this price! Polished aluminum. Standard cord set fits.



Cream Whipper
\$1.39

Whip cream in a minute and a half! Green enameled motor housing, pint green glass jar!

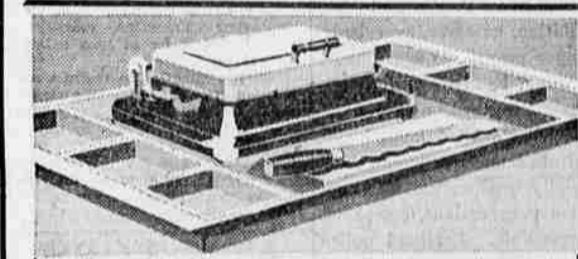


SPECIAL VALUE!
Food Mixer and Juicer

\$10.95

Sells under manufacturer's name for \$14.95! Wards save you as much as \$4.00. This powerful Mixer is the biggest work saver you can buy for the kitchen. Performs a hundred threese tasks like cake-mixing, potato mashing, juicing oranges, heating eggs, whipping cream. And the new graded oil cup dropper is a big help in making salads or other mixtures where small quantities of oil or other liquids are needed. Furnished complete with 2

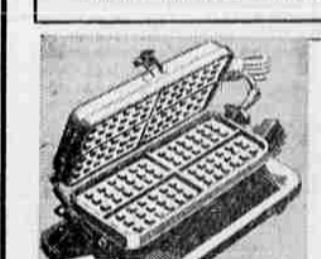
mixing bowls, juice extractor, graded aluminum oil cup dropper, and seven feet of cord with plug. Base finished in ivory and green enamel. 2 speeds.



Entertain with a Hostess Set

\$4.98

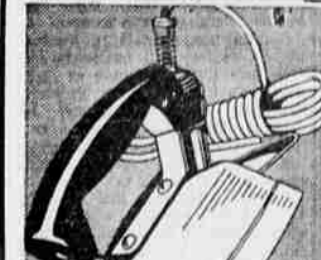
So practical! A sandwich toaster—double size—six relish dishes, bread board, and bread knife—all on a big 15 by 21" tray of smooth wood!



Makes Toasted Sandwiches or Golden Waffles

\$5.95

Two in one! Combination grill and waffle iron at a Ward low price! 2 sets of grids are furnished! Finished in chromium plate, bakelite side handles. Heat indicator, grease cup.



Electric Iron

\$2.95

With Cord
Designed to save time, energy and dispositional! Priced by Wards to save money. Curved handle fits the hand, saves strain. Protects fingers from heat. Chromium finish. A value!



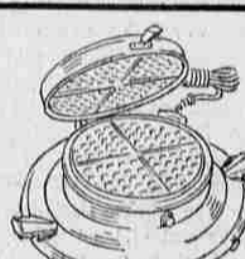
Heating Pad
\$2.29

Electric. 3-heat switch—low, medium, high. Control prevents overheating! 12"x15".



New Percolator
\$4.98

Automatic — makes coffee to suit your taste! Polished aluminum. 3-cup size. A buy!



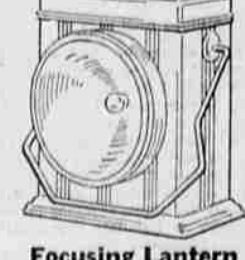
Autom. Waffle Iron
\$4.98

Electric! Automatic control—for light, medium, or dark waffles! Low-boy style. A buy!



3-Cell Flashlight
89c

Throws 600-foot beam! Silver-plated reflector—Mazda bulb without batteries.



Focusing Lantern
\$1.00

Throws 1000 foot beam! Uses 2 dry cells! 5-inch lens. Troubleproof switch. Durable.



2-Cell Flashlight
59c

Mazda bulb. Nickel plated. Ring finger. Throws 250 ft. beam. Without batteries.

117 So. Central
Telephone 286

MONTGOMERY WARD

Automobiles killed 147 head of cattle in 12 west Texas counties during June, July and August, 1934.