

CRATER LAKE HAS BANNER YEAR FOR VISITATION, WORK

118,699 Visitors Counted—Maintenance And Improvement Carried On—CCC Aids In Program.

In addition to having one of the best travel totals, 118,699 people, in several years, the 1934 Crater Lake National Park season witnessed extensive construction, maintenance and improvement activities in the further development of this famed scenic attraction. The park has been under the direction of David H. Canfield, as acting superintendent since last spring.

First constructed in 1919, the rim road around Crater Lake for a distance of 35 miles is being replaced by a new route, the first unit of which was begun in 1931 by the P. L. Crooks company from the lodge to the North Entrance ranger station at the junction of the Diamond Lake road. The grading of this section was completed last year and the surfacing this year by the Horner & Johnson company, which also surfaced the Diamond Lake route from the north entrance to the park boundary. This is to be oiled during the 1935 season.

Start Rim Road Unit
Construction of the second unit of the rim road from North Entrance to the "Wineglass," a distance of 7.8 miles was begun late last year by the Von der Hellen and Pierson company, which also surfaced over 50 per cent completed this year. This unit includes a number of deep cuts, which in some instances reveal ideal cross-sections indicating how Mt. Mazama, the ancestral mountain of Crater Lake, was slowly constructed layer upon layer of volcanic material.

A section of 4.3 miles extends from Wineglass to Cloudcap as a third unit of the rim road. The grading of this stretch, begun last year by the Dunn & Baker company of Klamath Falls, was completed this year. Cloudcap is one of the highest rim points and provides an ideal view of the lake country. The Dunn & Baker concern was awarded a contract this year for 1.6 miles from Cloudcap to Sentinel Rock. A fifth unit of 2.4 miles from Sentinel Rock to Kerr Notch on the east side of the lake will be undertaken next season by the Pierson and Von der Hellen company. The sixth unit of the rim road from Kerr Notch to Lost Creek Ranger station has been graded and surfaced for the past year. It covers a distance of four miles.

With the present projects under construction next summer, the only distance remaining untouched extends from Lost Creek to Government Camp, a distance of eight miles. When this section is placed under construction it will largely follow the old route as the other units and will likewise eliminate unnecessary grades and curves. Surveys have been completed for some time.

Road Work Heavy
Road maintenance was carried on during the past year on a larger scale than for several years past. Special attention was given to the south entrance road, which was in need of complete repair for the last three years. Similar work was also performed on the west entrance, providing motorists with the smoothest park highways they have enjoyed for some time.

Eliminating unnecessary curves and grades, surveys are over 50 per cent completed for changes in the south and west roads. One of the grades to be thus eliminated will be the "Corkscrew" a short distance from Annie Spring on the west road. This grade, while not particularly long, is treacherous in snowy weather and has always been a problem when snow removal was carried on during the winter.

The present park administration is anxious to remedy as many road defects as possible to facilitate the winter snow plowing when it is eventually resumed, thus cutting down the expenses of such work.

Among physical improvements in the park is the construction of a new administration building at Government Camp, replacing an old log building which had outlived its usefulness years ago. Construction of the administration building was begun during the past summer and is regarded as one of the most attractive in any national park. The building is one of attractive architecture, harmonizing with the landscape of the Crater Lake region. Native stones are used for the walls and the roof is of an extraordinary steep pitch to withstand the deep snows of the mountain winters.

This building has been a needed addition to the park for sometime and its rooms are so planned as to take care of all departments.

Landscaping Undertaken
Landscaping was another important project undertaken during the past season. Over 10,000 shrubs and trees were planted during the summer in the restoration of denuded areas to their original state. Much of this work was done in the administration area at Government Camp, the present appearance of which is entirely foreign to its poorly improved condition three or four years ago. The 1934 season, itself, has made a remarkable difference, has 1800 truck loads of peat and sod were hauled during the season, a portion of which was used in the rim area where considerable landscaping was carried on near the lodge.

Figures reveal that the planting of a tree is less than half as expensive at Crater Lake than in a city, where the average cost of planting trees is \$45. The average cost at Crater Lake did not exceed \$15. As a result of the landscaping activities the Crater Lake rim area has taken on a far more attractive appearance.

The rim campgrounds benefited from this project in the construction of modern camp stoves and fireplaces embodying the latest designs to add comfort to camping. Individual campsites were also established and shrubs and flowers were planted in different parts of the grounds.

A new water system was begun near the West Entrance Ranger cabin, entailing the laying of approximately 14,000 feet of pipe.

Widespread work was accomplished by the CCC camps located in the park at Annie Spring and Wineglass. Ranger patrol cabins were built in different sections of the park. Numerous acres of roadside clearing along the west and south entrance roads were completed, adding to the general beauty of the scenery as well as reducing fire hazards. The CCC members took an active part in landscaping and in the construction of motorways. The motorways are regarded as important forest protection measures.

Guide Service Features
Thousands of the park visitors took advantage of a well prepared naturalist and guide service program, offering nightly programs at the community house and lodge, including informal discussions on park subjects and entertainment programs. Lake excursions were popular during the season especially a new trip which took visitors entirely around the lake for a distance of 26 miles, accompanied by ranger-naturalists who pointed out and explained all points of interest. Daily rim caravans, special guide trips to points of interest and short discussions at the Sinnott Memorial observation station alike were all popular. Hundreds of visitors found their way up to "The Watchman" observation station on the summit of the first high point on the west rim, providing a rare panorama of the lake country.

Plans were begun during the past season for an increase in the daily limit of fish, now set at five per person per day. The limit may be increased to 10. Quite a large number of fingerling trout were planted during the year with the cooperation of the Oregon state game commission.

Beetle Under Control
Surveys this fall revealed that the pine beetle situation is well under control in the park, eliminating the annual battle against the insects which are blamed for the death of thousands of trees in the park during years gone by. A very small number of infested trees were found this year.

An improvement program was prepared for the Oregon Caves National monument under Crater Lake park jurisdiction. It will include a new water system to augment the present system which has proved to be inadequate and will necessitate the laying of approximately 8000 feet of pipe. A new concrete reservoir will also be constructed. Trails in and outside the monument to points of interest will be built, as well as improvement work to the trails through the caverns. Repairs and improvements will also be made to the lighting system in the caves. A park ranger was on duty at the caves last summer. A complete CCC camp will be stationed there this winter augmenting a "spike" camp of 50 men who had been there since last spring.

A program has also been prepared for the Modoc Lava Beds National monument under the jurisdiction of the park office. It will include the construction of roads, and trails to points of interest in this monument in northern California, well known for its numerous caverns and Modoc Indian war history.

GLEEMEN GIVEN WORD OF PRAISE

By Arthur W. Warnock

Here is a kindly word of appreciation given this morning by the Misses Carlton, residing on the Old Stage road, to H. J. Felscher, director of the Medford Gleemen campaign to enlist support for the choir's two concerts this season in the way of associate membership tickets.

"We heartily endorse and approve of the Medford Gleemen. Such a high class organization deserves the encouragement of everybody in this community who desires the best things in the matter of cultural forces, good music, wholesome entertainment. Especially is this organization worthy of commendation when one thinks of the way these men now, when they solicit such for those who cannot pay to hear them. Before Grangers, before groups of people whose lives are none too bright these days. Music-loving people as well as all who hope for the best things in this lovely valley should rally to the aid of the Gleemen now, when they solicit such aid, and we cheerfully give you our endorsement and wish the Gleemen well."

The Gleemen thank you, ladies, for this beautiful bunch of roses. It is just such approving pats on the back that will encourage this famous choir of Southern Oregon to strive harder than ever to attain perfection. Your kind words and your willing support will always be remembered.

CHIHUAHUA EDIFICES CLOSED BY GOVERNOR

JUARQUE, Chihuahua, Oct. 25.—(AP)—All churches in the state of Chihuahua were closed today and the permits of the five priests permitted to officiate in the state were cancelled by order of Governor Rodrigo Quevedo.

The governor placed his secretary of state in charge of all church property. Committees of 10 members each, known as juntas vecinales, will be named in each community to take over and inventory church property.



We've Got Your Number if it's 22½ to 25!

No woman ever has to go away disappointed because we can't fit her in a smart hat in her proper head-size. Because we specialize in hats that are comfortable... big enough... smart enough to please the most exacting tastes... in youthful large head sizes and more maturely ones. The two smart brims sketched show what a lot of style and newness you can expect at

\$2.98



Millinery 2nd Floor

Boys' Wool Jersey SUITS

In the Kiddies' Shop on the Main Floor a Sale of Small Boys' Wool Jersey Suits in Brown, Green and Navy Blue. These are in sizes 2 to 8 and made with a Zipper Fastener.

\$2.98 ea.

Kiddies Pure Wool SWEATERS

Another Saturday Special in the Kiddies' Section—Little Tot's pure Wool Slip-on and Button Front Sweaters. Sizes 2 to 6 years. In good shades for Fall. Values up to \$1.49. Special

\$1.00 ea.

Women's Outing Flannel Night Gowns

Saturday and Monday Sale of Women's and Misses' Warm Outing Flannel Night Gowns for only 89c each. These Gowns come in White and Colors and have long sleeves for Winter Wear.

89c ea.

Mann's October Sale of Blankets

Kenwood Blankets

World famous "Kenwood" Blankets. Soft as a powder, light and warm as the world's choicest long-fibered wools can make them. Beautiful Kenwood Blankets are 72x84-inch in size, Pre-shrunk and will keep their beauty through a lifetime. Special at Mann's.

\$11.95 each

Horner Blankets

Feel the exquisite softness of these Nationally Known Horner Blankets—a triumph of Modern Blanket Weaving. Horner Blankets are 72x84-inch in size and are reversible, having two distinct tone weaves. On Sale Tomorrow in the Blanket Section for

\$9.95 each

Another Marvellous Blanket—72x84-inch Satin Bound Pure Wool Reversible at \$6.98 each. These big warm bed fellows come in a wide variety of soft bedroom shades that will harmonize in contrast any color scheme you may have. Extra Special this Week at Mann's.

\$6.98 each

A Big 72x84-inch All Wool Melbourne Blanket Tomorrow for \$4.49

Store Closes at 8:30 on Saturdays



Butterick & Vogue Patterns

Mann's Annual Winter Sale of Women's Coats

Starts Tomorrow Morning at 8:30 o'Clock Hundreds of New Coats at Reduced Prices

Thrill to the Beauty of these Exquisitely Styled Coats—but better still, during the fact that you can own any of them at a price that's a fraction of Actual Value. Dress Coats, Sports Coats, Swaggers and Plain Tailored Models—Fur Trims and Self Trims in all sizes, on Sale Tomorrow at Mann's.

50 Fur Trimmed Coats

Go on Sale Tomorrow in the Biggest Coat Value of the Season—50 Beautiful full-lined Dress Models trimmed with such Quality Furs as Fox, Wolf and Natural Nutria. The Colors are Brown, Black, Green and Novelty Wool Mixtures. The size range is complete. If you want a Winter Coat, one of these will be a mighty good investment.

\$25.00

25 New Sport Coats

Think of Buying a Coat Worth \$14.75 this Early in the Fall Season for only \$9.95. New all-wool Sports Models made from choice Oregon Woolen Mill Fabrics in Fancy Tweeds and Tailored Mixtures in Belted Sports Styles and Popular Swagger Models. All sizes.

\$9.95

50 Sport and Dress Coats

For this Super Coat Event we have taken 50 stunning New Sport and Dress Coats and marked them \$15.95. Most of these Coats have luxurious Fur Collars and are Silk Lined. A complete size range and color assortment will be found in this unusual group.

\$15.95

Every \$65.00 Coat Reduced For This Great Winter Sale

Announcement of unusual interest for this Early in the season—Every one of our Regular \$65.00 Coats and Standard Dress Coats for \$59.50. These are superb Models, finely tailored from domestic and Imported Woolens. Silk lined and trimmed with Genuine Furs. You'll never buy such Coats as these for less than \$59.50.

\$59.50

Dress Sale!

75 Silk and Wool Dresses

A Mighty Big Dress Event for Saturday! 75 of Our Choice Fall and Winter Dresses are included in this Sale. Dresses of lovely Silks and Dresses of fine, soft Wools in Solid Shades, Plaids, Stripes, Checks and Novelty Prints. Each Dress a 1934 Winter Style and in sizes from 14 to 46. On Sale Tomorrow.

\$5.95

Many of These Dresses Are Regular \$14.75

Dress Shop Second Floor



COATS SECOND FLOOR

New Formal and Dinner Dresses

Now for the dinner or the dance in one of these lovely new Formal and Semi-Formal Frocks... Smart Taffetas, Silk, Merie and Beautiful Satins. These glorious dresses are Metallic trimmed and shown in the Season's Best Colors. Sizes 14 to 20.

\$14.75

SECOND FLOOR

Headquarters for the New SWEATERS

New Wool Gorillas

In the Sweater Shop—New All Wool Gorilla Sweaters for Women and Misses. These are in Brown, Red and Blue in Crane Neck Style.

\$2.25

New Twin Sweaters, Special \$4.95

Specials for Children

Mann's Second Floor

Zipper Suedine Jackets, at Mann's \$2.25

Heavy Quality Sport Jackets for \$1.95

Children's Suedine Rain Coats for \$3.45

Children's Winter Coats, Special for \$5.95

Children's Wool Dresses, at Mann's \$2.95

Children's Wash Dresses, Special for \$1.00

Bring the Children to Mann's



MAIN FLOOR



FOOTBALL TOMORROW

Klamath Falls vs. Medford!

Colonial Dames Demonstration

Starting Monday, October 29 and continuing until November 3rd, a staff specialist from the Colonial Dames Laboratories will be in our toiletries section. This Beauty Expert will be very glad to assist you in any way regarding the proper care of your particular type of beauty, and will give you a Free Colonial Dames make-up and face treatment. Make your appointment Tomorrow.

Demonstrations Given in Private



A Christmas Idea

Buy two or three of these lovely Gift Boxes of Bath Oil and Soap for Christmas. Put them away for the Holidays. Each box consists of 1 Generous Bottle of Cologne Bath Oil and 1 Bar of lovely Soap in Lavender and Pine Odor. They are beautifully boxed.

\$1.00 box

New Winter Neckwear

In the Neckwear Dept. New Satin-Pique and Novelty Neckwear at \$1.00 Tailored and Dressy Styles for the High or Low Neck Frocks.

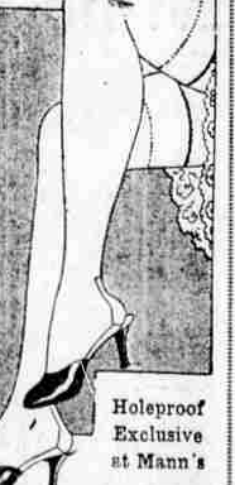
\$1.00 ea.

Slipperettes

Ask to see these Cozy Yarn Slipperettes. They are great for tired feet, lounge or for the convalescence. They come in all colors put up in dainty gift boxes. All sizes.

\$1.00 pr.

Main Floor



Holeproof Ringless

Another Super Hosiery Value—Genuine Holeproof Ringless Silk Hose in four-thread walking chiffon weight for only \$1.15 per pair. This marvelous shadow free stocking comes in Winter's newest shades and has a re-inforced foot and a beautiful garter top.

\$1.15 pair