

DEMOCRATS GAIN 28,000 VOTES IN STATE REGISTRY

Small Decline in Total Figures Seen—G. O. P. Gained in Six Counties—Lost Heavily in Multnomah.

SALEM, Oct. 24.—(AP)—A shift of about 28,000 voters from the Republican lists to the Democratic column since the general election of 1932 was revealed today when all counties reported to the secretary of state here today. The total registration for this year's general election two weeks from today of 484,491 was but 1,855 less than two years ago.

Total registrations were 281,367 Republicans; 182,717 Democrats, and 10,403 miscellaneous. Grant, Wasco and Polk counties filed today to make the list complete. Republicans lost 28,473 and the miscellaneous list was decreased by 1,435. Democrats gained 28,251.

The registration for the primary election last May was 461,914, of which 285,501 were Republicans and 166,504 Democrats.

Items Lead in Two

For the first time in recent history two counties recorded a larger Democratic than Republican vote, Baker and Klamath.

All counties reported increases in the Democratic party but Harney with a decrease of 81. Willows with a loss of 19 and Washington with 242 less. The Republicans made greater gains than Democrats in two others, Gilliam and Wheeler. The greatest Democratic gains were in Multnomah county with 14,549, Klamath with 1,883, Clatskanie with 1,287.

Counties reporting increased total registrations were Baker, Clatskanie, Columbia, Crook, Gilliam, Hood River, Josephine, Klamath, Lake, Lincoln, Malheur, Marion, Multnomah, Tillamook, Umatilla, Union and Wheeler.

Multnomah Leads Gain

The largest gains were in Multnomah with 3,996, Klamath with 846 and Marion with 581. Losses in totals were greatest in Washington with a decrease of 3,117, Lane with 1,809 and Douglas with 1,787 over that of two years ago.

The Republicans gained in six counties led by Malheur, Wheeler and Hood River with lesser gains in Crook, Gilliam and Umatilla. The greatest Republican losses were in Multnomah with 10,401, Lane 1,885 and Douglas with 1,196.

SHEEP SUFFERING FROM DOG RAIDS

Complaint has been filed by sheep raisers with the county court, that dogs—mostly unlicensed, and running wild over the countryside—are killing sheep in large numbers.

The sheepmen request that the county court take action to curb the dogs. Commissioner Ralph Billings reports that a week does not pass when a bill is not presented to the county for sheep killed by dogs. This amounts to a considerable sum over a year, and under Oregon law must be paid for by the county court.

Sheepmen report that after raids on their flocks, they have kept a watch and slain the marauders. The dogs travel in bands of two or three. All of the dogs killed were unlicensed. Quite a few have been police dogs, that went "wild," it is reported.

According to county authorities, some of the sheepmen threaten legal action against dog owners, as a means of redress.

Some owners of dogs claim that the sheep killing is the work of coyotes. The sheepmen claim that most of the marauding has been in sections on the floor of the valley, where coyotes seldom if ever venture.

RAIN BENEFICIAL TO FARM AND ORCHARD

Rain of the past three days has been highly beneficial to all cover crops according to County Horticulturist Lyle F. Wilcox. The moisture has penetrated from 10 to 12 inches. Continuation of the rain would be of high value to the orchards.

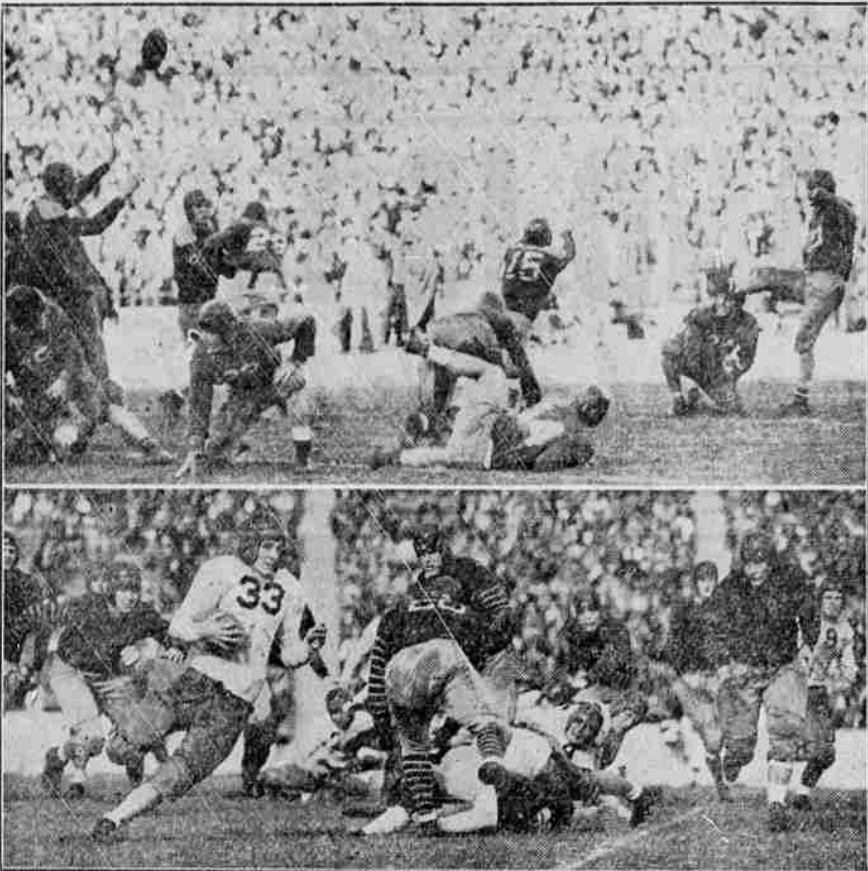
According to reports considerable snow has fallen in the higher levels, with heavy falls at Diamond Lake, Union Creek, and in the Dead Indian country. Snow also fell in the Siskiyou. It has started to melt, causing a slight rise in irrigation storage reservoirs.

Use Mail Tribune want ads.

Phone 1300 for Towing or Wrecker Service Anywhere—Anytime Lewis Super Service

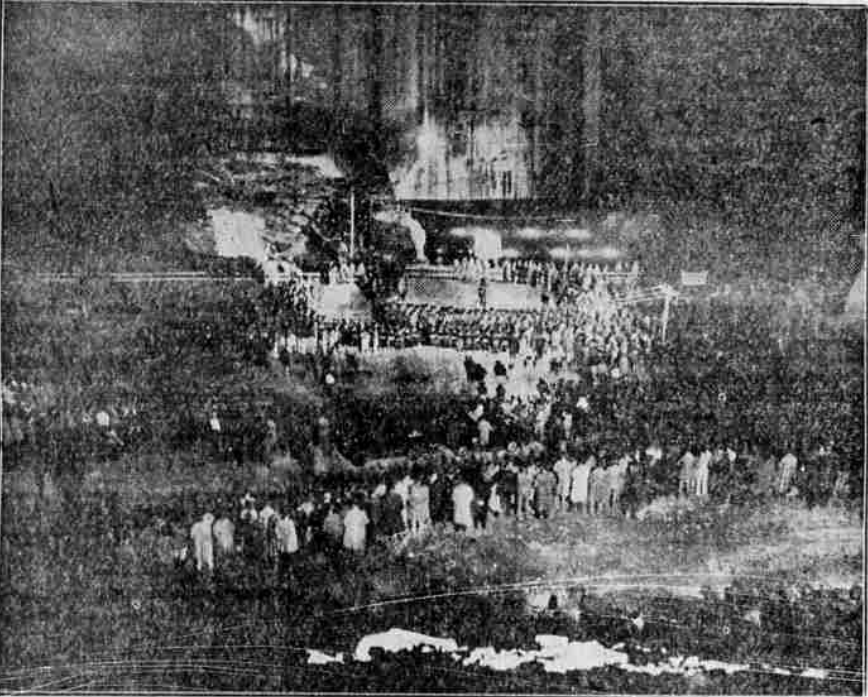
Winter Driving is hard on the battery. Play safe with a Seventh Long Life EXPIRY AND RECHARGE SERVICE SEVEN DAY BATTERY SERVICE 1522 So. Riverside, Phone 390

KICKING TOES WIN TWO GAMES 3 TO 0



Placement kicks were all that saved Stanford from being tied by the University of San Francisco and California from a draw with the University of California at Los Angeles in Coast Conference games. Above, the photographer caught in the air the ball Moscrip, Indian end, booted through the uprights with only a few minutes of play remaining. Below, Cheshire, aggressive Bruin left half, is shown on a characteristic gain on a reverse, good for seven yards. (Associated Press Photo)

SHRINE CEREMONIAL AT GIANT BOULDER DAM



More than 5,000 Shriners from western states gathered at the base of Boulder dam on the Colorado river, at midnight Oct. 23 to participate in a ceremonial in which 200 novitiates joined the ranks of Nobles. The canyon was lighted by huge floodlights, while colored lights played on the mammoth intake towers and granite walls of the Dam. (Associated Press Photo)

45 SINGERS FORM GLEEMENS GROUP

By Arthur W. Warnock

Who are the 45 Medford Gleemen? What is today's personnel of this famous singing group of Medford's business and professional men? To refresh your memory here they are:

Officers and directors: Musical director and manager, James Stevens; assistant musical director, Sebastian Apollo; president, H. G. Beach; secretary and treasurer, J. S. Tobin; librarian, E. Beall; directors, J. H. Swen, H. W. Frame, M. E. Olson.

First tenors: A. Pruitt, S. E. Poy, H. D. Grey, L. G. Oentner. Second tenors: H. Niedermeyer, D. R. Sloan, M. F. Sheets, C. C. Goldsberry, H. C. Williamson, A. J. MacDonald, K. G. Denman, George Henselman, Fletcher Plab, L. W. W. P. Holt, Darrell Huson, Potter J. Neff.

First base: Gilbert Elder, Dr. W. W. Howard, "Chick" Buchanan, H. N.

Hotel San Pablo

Convenience and Economy Stop in OAKLAND Hotel San Pablo offers:

Comfort without Extravagance Central Location RATES: \$1.00 to \$1.25

FREE GARAGE MODERN COFFEE SHOP

Directions to Hotel: Stay on Main Highway (San Pablo Avenue) directly to 20th St.

Management HARRY R. STRANG

SAN PABLO AVENUE AT 20th ST. OAKLAND, CALIF.

FALL RIVER HATCHERY DESTROYED BY BLAZE

By Arthur W. Warnock

Butler, H. Marx, K. Wall, J. H. McKenzie, Victor Tengvald.

Second base: Dr. E. W. Shockley, George Peckham, J. W. Kirkpatrick, H. O. Purucker, H. W. Frame, Dr. E. O. Carlow, A. L. Vroman, C. R. Bailey, M. J. Swing, H. H. Corliss, M. E. Coe.

These are "The Singing Misadventures of Medford." Wherever they appear they make friends for Medford. This week the drive is on for the sales of this season's associate memberships for the Gleemen and the response so far on the part of music loving people, who want to support the singers in their civic work, has been most encouraging.

PORTLAND, Oct. 24.—(P)—About 50 metal slugs, apparently fired from high-powered slingshots, were fired through the doors and windows of H. B. Holmes, foreman of the Oregon Worsteds mills, the scene of labor trouble, while the family was away Monday night.

CHANGES IN S.P. TRAIN SERVICE starting Oct. 28

On its new schedule starting October 28, the northbound Shasta will leave Medford 8:58 a. m. instead of 10:53 a. m., arriving in Portland at 7:35 p. m.

The southbound Shasta will leave at 6:32 p. m. instead of 8:42, arriving San Francisco 10:12 next morning, same as at present.

There will be no change in the schedules of Nos. 329 and 330, except that 329 will arrive in Portland at 7:55 a. m. instead of 7:45.

Southern Pacific J. C. CARLE, Agent. Tel. 34

NO "baking-powder taste" from Rumford! All the natural food flavors are brought out in baking—in general cooking too—by this all-phosphate powder.

Quick relief from pain Prevent shoe pressure Dr. Scholl's Zino-pads Put one on—the pain is gone!

Markets

PORTLAND, Ore., Oct. 24.—(AP)—CATTLE—300, calves 25; steady, unchanged. HOGS—500; steady, unchanged. SHEEP—200; steady, unchanged.

CHICAGO, Oct. 24.—(AP)—(U. S. Dept. Agr.)—HOGS: 23,000; direct 9000; slow, uneven, above 200 lbs. and packing sows steady to 10c lower, others mostly 10-15c, spots 25c lower; demand narrow for lights, better grade 220-350 lbs. 5.85-9.3, top 6.00, sparingly; 170-210 lbs. 4.85-5.75; light lights 4.00-7.5; packing sows 5.00-5.90 light weights 5.50.

CATTLE: 11,000; fat steers and yearlings predominating in crop liberal supply good to near choice also sizeable warmed up and short fed kinds; market very slow, weak to 25c lower, hardly enough done to make market, few sales better grade steers and yearlings 7.75-9.00 strictly choice 1350 lbs. 9.50; best yearlings 8.50, other killing classes relatively scarce, fully steady; cutter cows strong to 10c higher, vealers 6.50-7.00; underdone on stockers and feeders weak to 25c lower.

SHEEP: 12,000; fat lambs in fairly broad demand, indications around steady on all classes, bids good to choice native 6.50-7.50, best held around 7.00, nothing done on range offerings, fresh supply largely in killer flesh; few native ewes around 1.50-2.25, bulk range feeding lambs 5.50 downward.

SOUTH SAN FRANCISCO, Oct. 24.—(AP)—(U. S. D. A.)—CATTLE: 150; including 60 direct; government: none; small supply largely low-grade cows, all classes around steady; few lots common-medium 900-1213 lb. steers 3.00-4.75; good fed steers absent, 900-1200 lb. weights quoted to 5.75 or above; comparable quality under 900 lb. fed yearlings eligible 6.25 and above.

SHEEP: 175; very limited supply strong to higher, or fully 25c or more higher for week to date; deck largely common-medium 64 lb. early shorn California lambs 5.25; good-choice under 90 lb. woolled quotable 6.00 or above.

PORTLAND, Oct. 24.—(AP)—Grain: Wheat: Open High Low Close Dec. old 85 85 85 85 May 84 84 84 84

Barley: Big Bend bluestem 92c; dark hard winter, 12 per cent, 94 1/2c; do 11 per cent, 89 1/2c; soft white, hard winter, northern spring and western red, 82 1/2c; western white, 81 1/2c.

Oats: No. 2 white 83.00. Corn: No. 2 eastern yellow 85.75, mill-standard 82.50. Today's cash receipts: wheat 24; barley 2; flour 9; oats 1.

Portland Produce

PORTLAND, Oct. 24.—(AP)—Butter: prints, A grade, 30 1/2c lb. in parchment wrappers; 31 1/2c lb. in cartons; B grade, parchment wrappers, 30c lb.; cartons 31c lb.

BUTTERFAT—Portland delivery: A grade delivery at least twice weekly, 30@32c lb.; country routes, 29@32c lb.; B grade or delivery fewer than twice weekly Portland, 29@32c lb.; country routes, 27@31c lb.; C grade at market.

EGGS—Sales to retailers: specials, 32@36c; extras, 33@36c; fresh extras, brown, 33@34c; standards, 27@29c; fresh mediums, 27c; medium firsts, 23c; pullets 19c; do firsts, 17c; checks, 25c; bakers, 20c dozen.

EGGS—Buying price of wholesalers: fresh specials, 34c; extras, 31c; fresh extra brown, 31c; extra firsts, 29c; extra medium, 24c; medium firsts, 22c; pullets, 17@18c; do firsts, 16c; under grade, 16@17c dozen.

LIVE POULTRY—Portland delivery buying prices: colored hens under 6 1/2 lbs., 14c; do over 6 1/2 lbs., 14c; do over 6 1/2 lbs., 14c; do over 6 1/2 lbs., 14c.

Chicago Wheat

CHICAGO, Oct. 24.—(AP)—Wheat futures: Open High Low Close Dec. old 93 93 93 93 May 91 91 91 91 July 89 89 89 89

NEW YORK, Oct. 24.—(AP)—Bar silver steady, unchanged at 53c.

San Francisco Butterfat

SAN FRANCISCO, Oct. 24.—(AP)—First grade butterfat 30c, f. o. b. San Francisco.

Wall St. Report

NEW YORK, Oct. 24.—(AP)—Led by railroad shares, which rallied sharply before the close, the stock market turned upward in late trading today. Ralls spurred on news federal court had held the federal railroad pension act unconstitutional. Transfers increased to around 700,000 shares and net gains of 1 to 4 points were numerous.

Today's closing prices for 32 selected stocks follow:

Al. Chem. & Dye	129 1/2
Am. Can.	102 1/2
Am. & Fin. Pow.	38 1/2
A. T. & T.	111 1/2
Anacosta	11
Atch. T. & S. F.	56 1/2
Bendix Avia.	123 1/2
Beth. Steel	28 1/2
California Packg.	38
Calsiphar Tract.	28 1/2
Chrysler	20 1/2
Coml. Solv.	20 1/2
Curtiss-Wright	2 1/2
DuPont	9 1/2
Gen. Foods	31 1/2
Gen. Mot.	30 1/2
Int. Harvest	33 1/2
L. T. & T.	10
Johns-Man.	46 1/2
Monty Ward	28 1/2
North Amer.	13 1/2
Park Utah	3 1/2
Penney (J. C.)	67 1/2
Phillips Pet.	14 1/2
Radio	6
Sou. Pac.	19 1/2
Std. Brands	19 1/2
St. Oil Cal.	28 1/2
St. Oil N. J.	41 1/2
Trans. Amer.	5 1/2
Union Carb.	44
U. S. Steel	34 1/2

Pears Yesterday

NEW YORK, Oct. 23.—(AP)—(U. S. D. A.)—Pear auction market: prices slightly stronger, 13 cars arrived; 4

County Boasts 42,000 Turkeys

200 Oregon walnut growers met here yesterday to express dissatisfaction with operation of the federal walnut control board and to petition the secretary of agriculture for a revision of the walnut code and establishment of a separate control board for Oregon.

County Agent Robert G. Fowler estimates the turkey crop of Jackson county at 42,000 birds. He says the turkeys are well scattered throughout the county, with the largest flock on the Hamlin ranch, in the Reese creek district. The turkeys are above the average in quality and size.

To date no price has been announced, but according to the county agent, it is expected to be higher than last year. First sales of Rogue River valley turkeys are due the first week of November.

The valley turkeys escaped the usual ailments, and ideal weather conditions aided their early growth, according to the county agent.

NUT GROWERS PETITION FOR CHANGE IN CODE

NEWBERG, Ore., Oct. 27.—(AP)—Only two dissenting votes were recorded when a group of more than

ONLY 15c NOW FOR QUICK-ACTING BAYER ASPIRIN!

NOW—Pay Less and Get Real Bayer Aspirin!

So as to put the reliability and quick action of Genuine Bayer Aspirin within the reach of everyone, the price you pay has now been reduced. Reduced so low that nobody need ever again accept another brand in place of real BAYER ASPIRIN to save a few cents.

15c now for tins of 12 tablets. 25c now for bottles of 24 tablets. And the big, family size, 100 tablet bottles again reduced! These new low prices are now in effect throughout the United States.

ALWAYS SAY "BAYER ASPIRIN" NOW WHEN YOU BUY

Remember, scientists rate it among the fastest known reliefs for headaches, and the pains of rheumatism, neuritis and neuralgia.

So—Always Say "Bayer" When You Buy

These new low prices make it unnecessary now to accept unknown aspirin tablets to save money.

So—see that you get the real Bayer article now by never asking for it by the name "aspirin" alone, when you buy; but always say B-A-Y-E-R Aspirin, and see that you get it.

Remember, scientists rate it among the fastest known reliefs for headaches, and the pains of rheumatism, neuritis and neuralgia.

WHAT A POUNDING THIS CAR TOOK!

Comes through stiffest Ruggedness Test of ALL time in perfect condition—Ready for more

They said it couldn't be done. But the Ruggedness Car did it! An actual owner's car—a Hudson-built Terraplane—with a year's mileage already to its credit—took more than another year's punishment in 14 days and finished in A-1 condition!

Day and night this car swung around a giant course, picked because it offered the toughest going to be found in this section of the country. Over "unclimbable" hills—through rain, mud, sand and dust—roads most drivers avoid if they can. What proof of ruggedness this is!

The "Ruggedness Cars" Are Here For You To Drive

A car that can "take it" like this is the kind of car you want to own. We have them at our showrooms—cars exactly like it—waiting for you to see and drive. Cars that have challenged all comers to public tests of economy, hill climbing and all-around performance—and have beaten those that dared accept. Cars that hold scores of official AAA stock records. They have the same power that carried the Ruggedness Car triumphantly through its two-week grind. The same smooth riding, speed and flashing getaway that made 1,000-mile days possible on this run.

Come in and see them. Drive them. Ask for the sworn affidavits of owners, showing that this is the kind of performance you can expect from any Hudson-built car.

Contest Still Open! Win a Terraplane! Other Valuable Prizes! There is still time for you to enter the Slogan Contest—and win a valuable prize. A brand-new Hudson-built Terraplane for the best slogan and the best explanation of Hudson Terraplane ruggedness! Cash and merchandise prizes, too! But this contest closes in a few days. Enter now. Get entry blank and complete information at any Hudson Terraplane showroom.

LOOK AT THE PRICES—NOW DOWN WITH THE LOWEST HUDSON \$685-TERRAPLANE \$595 and up at factory for closed models EAKIN MOTOR CO.

So Riverside at Eighth St. Phone 304