

# THOUSANDS JOIN IN OVATION FOR RETURNING CHIEF

(Continued from page one)

PORTLAND, Ore., Aug. 2.—(AP)—Greeted by cheering thousands, President Roosevelt docked at Portland shortly after 11 a. m. today.

Brilliant sunshine beamed through clearing skies as the president's trim cruiser, the U. S. S. Houston, drew against the Portland seawall. A 21-gun salute was fired as the fighting craft passed slowly and majestically under the high draws of the Burnside street bridge, under which the cruiser passed as it entered the downtown harbor area of the "Rose City."

**Aides on Bridge**  
The president was not on the bridge as the vessel docked but his two secretaries, Connel Louis McHenry Howe and Stephen T. Early, waved to the crowd.

Hundreds of the officers and crew of the Houston lined the vessel's deck, the officers brilliant in full-dress uniforms.

The Houston docked without the aid of tugs, pulling into the pier under her own power.

Bronzed and smiling, President Roosevelt appeared on the bridge of the Houston at 11:15 a. m. The vessel was pulled by her hawsers close to the seawall. The president waved his Panama hat to the cheering thousands, then waited happily while the Houston's crew made the lines fast.

**Greeters Go Aboard**  
One of the ship's catapults was swung around to permit hoisting of gangplank to the dock from the Houston to permit the welcoming delegation to go aboard.

The president, meanwhile, leaned over the bridge, chatting with officers of his vacation ship. Among the crowd on the side dock was Mrs. Eleanor Roosevelt, who had arrived only last night from a transcontinental automobile excursion.

The president's sons, John, Franklin D. Jr., and James, were aboard the ship, James having gone downriver this morning aboard the coast guard cutter Redwing with the two presidential secretaries, Early and Howe.

**First Lady Visitor**  
Carrying a large bouquet of flowers, Mrs. Roosevelt went aboard the Houston at 11:40 a. m. Secretary of Interior Harold Ickes was next to board the fighting cruiser, at the head of a welcoming delegation which included Governor Julius L. Meier of Oregon and a committee of prominent citizens, numbering 25 or 30 men and women.

As each army of naval officers boarded the Houston the ship's band played a few bars of a salute measure. Marines stationed on duty aboard the cruiser stood at parade rest, as a guard of honor amidships, facing the gangplank.

The president wore a light gray suit which emphasized the bronzed tan which he acquired on his long sea voyage.

**Inevitable Rain**  
As the president prepared to leave the cruiser that had been his home a month, a thick, unseasonable shower beat down from quickly gathering clouds. The gusting rain dampened the clothing of the thousands in the harbor area, but it could not dampen the enthusiasm of the crowd already stirred to wild cheering by the sight of the president's radiant and magnetic smile.

The president had retired from the ship's bridge before noon, and promptly at the 12 o'clock bell sailors who had manned the rails ran below for their mid-day meal.

**To Dine Aboard**  
It was assumed, too, that President Roosevelt had decided to take luncheon aboard the cruiser, inasmuch as he would have had no other opportunity before 4:30 p. m., when he boards his special train at the site of the \$31,000,000 Bonneville power and navigation dam on the Columbia river above Portland.

Meanwhile, distinguished guests continued to board and leave the cruiser. In addition to Governor Meier of Oregon, Governor and Mrs. Clarence D. Martin of Washington were seen.

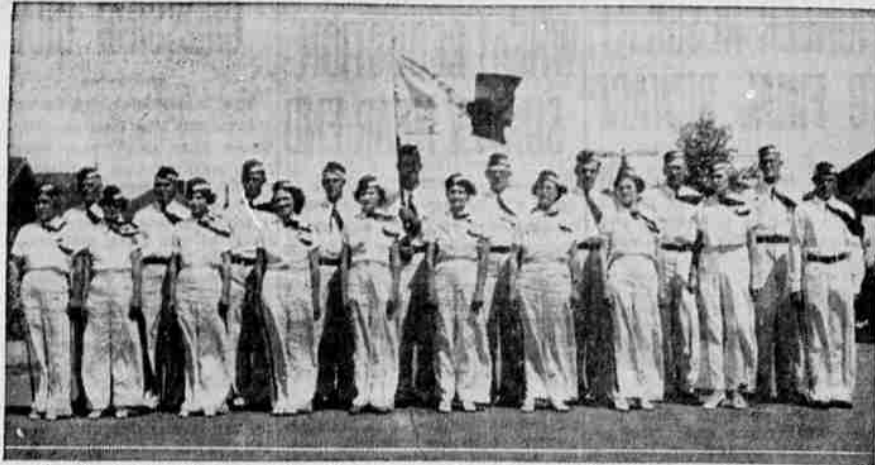
The delayed sunshine finally broke through the clouds as the brief shower passed on.

**GIRL MOTORCYCLISTS HERE AFTER JOURNEY THROUGH 37 STATES**

"Oregon looks best to us since we left California," was the remark of two bronzed girl motorcyclists, who have very nearly completed a 12,000-mile trip. They are Natalie Day and Eleanor Fair, of Woodland, Calif., who stopped here briefly today before continuing their last lap home, which they left May 1 on an excursion taking them through 37 states.

Miss Day and Miss Fair paused for breakfast at the Hotel Holland Coftee Shop this morning.

## Champion Eagles Lodge Drill Team



The trim Eagles' drill team of this city, which won the state championship for mixed teams at the state-wide Eagles' conclave at Marshfield, June 21, 22 and 23. This splendid unit also appeared in intricate drills on Medford streets on July 27, when the membership contest of the local lodge was launched. Front row, left to right: Mrs. Houston, Mrs. Boyd, Mrs. Hicks, Mrs. Gillette, Mrs. Randolph, Mrs. Coats, Mrs. Thurston, Miss Sullivan and Mrs. Shea. Back row, left to right: Eagles Barrett, Gillette, Randolph, Houston, Thurston, W. Peck, Carr, R. Peck, Coats and Powell.

**KINGFISH PLANS TO DRAG SOLONS INTO SQUABBLE**

(Continued from page one)

"They left on the journey without experience in handling a motorcycle. We learned after we started," was their remark when asked how they managed to get along.

From California, the two girls rode to New Orleans. At Milwaukee they visited a Harley Davidson factory, where their motorcycle was manufactured, and after seeing A Century of Progress in Chicago, continued to Washington, D. C., and New York.

From there they went north to Portland, Maine, before leaving for the Atlantic coast, visiting Yellowstone National park and Spokane on the way.

"We had one flat tire on the journey so far," said Miss Pait, "and practically no motor trouble. The flat took us five hours to fix, as it was our first experience. We've seen all the dry rivers and lakes in the country, and the Columbia certainly looked nice when we first saw it. The Pacific coast is good enough for us."

**TWO KILLED IN S. P. PASSENGER WRECK**

MANTECA, Cal., Aug. 2.—(AP)—Two men were killed and four other persons were injured when a Southern Pacific passenger train bound from Los Angeles to Oakland, left the rails near here today.

Charles Parley, veteran engineer of West Oakland, was crushed to death when the engine overturned, and an unidentified transient was fatally burned.

The injured were: Mrs. Earl M. Johnson, San Gabriel, injuries to chest. Albert W. Schitor, Tracy, fireman, second degree burns over body, may die.

Fred Barnes, itinerant, cuts scalp. The train, witnesses said, struck an open switch while traveling about 50 miles an hour. The engine left the track, plowed 100 yards and into the Manteca federal shelter. The baggage coach followed the engine, hurled over it, and crashed into the side of the shelter building. None of the passenger cars left the track.

Barnes said he was riding on the "blinds" of the train. He and the other injured were taken to the Manteca hospital and later to the San Joaquin general hospital.

**BUTLER RETURNS FROM ELK MEET**

Exalted Ruler H. N. Butler of the Elk lodge who returned this week from the national convention of the order held in Kansas City, gave a brief report of his journey at the lodge meeting last night. Mr. Butler declared the convention one of the most successful in the history of the organization despite the terrific heat.

The Medford resident acted as a "one-man chamber of commerce" to advertise the climatic glories of Oregon and the Rogue River valley particularly, during his stay in Kansas City.

A picnic dance will be held the latter part of the month at the Elks picnic grounds on Rogue river. It was decided at last night's meeting and the following committee was appointed by Exalted Ruler Butler to have charge of the affair: Bob Strang, chairman; Stanley Sherwood and Eric Westergren. It is planned to make the affair one of the finest ever given by the lodge and among the inducements will be a plentiful supply of free beer.

## KINGFISH PLANS TO DRAG SOLONS INTO SQUABBLE

(Continued from page one)

The governor, who was present, was silent.

**NEW ORLEANS, Aug. 2.—(AP)—**Surrounded by the guns of the mobilized national guard at Jackson barracks, Adjutant General Raymond H. Fleming today replied to a civil district court order for dismissal of the troops by directing his officers to fortify their positions.

Bentrics at the gateway of the barracks refused the civil sheriff access to the commander of the state militia, when they sought to serve the court order on him, and Fleming, over the telephone, told newsmen: "I shall carry out the governor's orders. I have given my officers orders to fortify their positions."

The court order calling for demobilization of the troops, summoned to duty in the bitter factional dispute between the political forces of Senator Huey P. Long and Mayor T. Semmes Walmesley of New Orleans, was secured late yesterday by city attorneys.

The sheriff and the chief of police served Long as "a conspirator" with the court summons last night, but were unable to similarly serve the adjutant-general.

**ONE AIRMAIL SERVICE EACH DIRECTION DAILY**

Only one airmail service each way is available at present in Medford. It was announced today at the post-office, contrary to the general belief that two planes leave this city daily north and south.

Southbound mail closes at the post-office at 11:40 p. m. and northbound at 4:55 a. m. Airmail ships leave the airport 65 minutes after these hours.

**PLYMOUTH, Vt., Aug. 2.—(AP)—**In the Vermont hills which left their indelible imprint upon his character, Calvin Coolidge was honored today on the 11th anniversary of his induction into office as 30th president of the United States.

From a platform opposite the quiet country grave yard in which he is buried, eulogies of his name and deeds shared equally with political denunciation of the policies of those who in his day went under the formal designation of "the party of the opposition."

**TOOK PILLS FOR YEARS THEN CEREAL BROUGHT RELIEF**

Kellogg's ALL-BRAN Corrected His Constipation

If you are troubled by common constipation, read this letter:

"Just a word in appreciation of what your ALL-BRAN has done for my health. For years, I had been dosing myself with pills and other dopes for constipation.

"I decided to try Kellogg's ALL-BRAN. Now I am in good health, and haven't taken a drop of medicine for six months."—Thos. F. Little, 554 E. Wheeling St., Lancaster, Ohio.

Headaches, loss of appetite and energy, sleeplessness—any one of these may be caused by common constipation. Yet this condition can be corrected, usually, by eating a delicious cereal.

Tests show Kellogg's ALL-BRAN provides "bulk" and vitamin B to help promote regularity. ALL-BRAN also furnishes iron for the blood.

The "bulk" in ALL-BRAN is much like that in leafy vegetables. How much safer than patent medicines! Two tablespoonsfuls of ALL-BRAN daily are usually sufficient. Chronic cases, with each meal.

If seriously ill, see your doctor. ALL-BRAN makes no claim to be a "cure-all."

Serve as a cereal or use in cooking. At all grocers in the red-and-green packages. Get ALL-BRAN, and not a part-bran product. Made by Kellogg in Battle Creek.

# PIGGLY WIGGLY

Offerings for August 4th and 6th, Saturday and Monday, except as otherwise noted. In addition to an unusually pleasant and comfortable place to shop you also have delivery privileges, no minimum amount required. Four deliveries daily. Then too, you can always save money at your home owned Piggly Wiggly.

210 East Main St. "SHOP ON MAIN STREET" Phone No. 9

**BEANS**—Maryland Chief, cut stringless. Not many left at this unusual price. Stock up now. No. 2 tins **3 for 25c**

**SARDINES** North Star. Imported, packed in pure olive oil. **3 for 25c**

**SUGAR** Pure Cane. 10-lb. cloth bags **57c**

**OATS** Carnation Quick. For a healthful breakfast. Large pkg. **23c**

**MATCHES** Long strong sticks. Carton of **6 boxes 25c**

**PORK & BEANS** Ritters. No. 1 tins **2 for 11c**

**STARCH** Amalzo, corn or glass. Pkg. **7c**

**DOG FOOD** Triske. A health food for your pet. "Dogs howl for it" No. 1 tins **5c**

**SALAD OIL** Pure vegetable. Bring your jug. Gallon **69c**

**OLD DUTCH** Goes further because made with pure selsmolite. Doesn't scratch. **2 for 15c**

**MJB COFFEE** The old favorite. Safety sealed for your protection. **1 lb. 30c - 3 lb. 87c**

**TREE TEA** Orange Pekoe (black) lb. **63c** Japan (green) lb. . . . **49c**

**KERRORBALL JARS** Pt. doz. **75c** qt. doz. **85c**

**KERR CAPS** Regular size. For safe canning. Dozen **25c**

**Sunrise COFFEE** Windmill. An all purpose blend at a reasonable price. Buy now, flour is going up. **49 lb. bag \$1.69**

**ALPINE MILK** Alpine. An Oregon product. In cases made in Medford. Beginning Friday, a three day demonstration and display of useful premiums obtainable with Alpine coupons. Support our local industries. Buy a case or a dozen cans. USE ALPINE. **Case \$2.85 per can 6c**

**FLAPJACK FLOUR** For camping. Take along a package on your next trip and enjoy real flapjacks every day. Large Pkg. **19c**

**ALADDIN COFFEE** Quality, freshness and satisfaction are yours with this coffee. **1 lb. 25c - 4 lb. 95c**

**PAROWAX** lb. **10c**

**CERTO** bottle **22c**

**WAX PAPER** 125-ft. rolls, cutter box. **19c**

**SHRIMP** Otter. Fancy, firm and clean. 5-oz. tins **2 for 29c**

**WESSON OIL** The new 1 1/2 minute way. Complete mayonnaise set—new quick mixer, pint can of Wesson Oil and recipe book. An 85c value for **49c**

**Del Monte PEAS** Early Garden. Tender, sweet and full of delicious flavor. No. 2 tins **2 for 35c**

**Del Monte PEACHES** Fancy red Alaska, firm and sweet meat. None better ever put in cans. No. 1 tall tins **19c**

**Del Monte TOMATO SALAD SAUCE** In heavy syrup. All the same size and shape. The most popular canned fruit. No. 2 1/2 tins **19c**

**TISSUE** ZALO. 1000 sheet, absorbent and soft. A sponge toy free with four rolls. **4 for 27c**

**CHASE & SANBORN'S COFFEE** It is consistently perfect. Finest quality, always fresh. 3-lb. can **79c**

**CATSUP** Ritters, 14 oz. bottles **2 for 25c**

**LIMA BEANS** . . . 2 lbs. **19c**  
**RED MEX BEANS** 4 lbs. **19c**

**CRACKERS** American Sodas, Grahams. 2-lb. carton **25c**

**DEVILED MEAT** Libby's, No. 1/2 tins. 4 for **25c**

**VIENNA SAUSAGE** Libby's, No. 1/2 tins. 3 for **25c**

**CORN** Golden Bantam. No. 1 tins **4 for 25c**

**DEL REY PRODUCTS** RAVIOLI, No. 1 tin **19c**  
MUSHROOM SOUP—No. 1 tin **3 for 29c**  
PEA SOUP—No. 1 tin **3 for 29c**  
TOMATO JULEP—No. 1 tins **3 for 25c**

**CLAMS** Royal Chef, Minced No. 1/2 tins **2 for 25c**

**BUTTER** 92 score. Insist on the best. Made in Medford. Always fresh and sweet. Sat. only **26c**

**RINSO** Wonderful for dishes as well as washing. LG. pkg. **21c**

**LIFEBUOY** The health soap. 3 bars **20c**

**CAKE FLOUR** Gold Medal. Pkg. **29c**

**PRESERVES** Strawberry. No. 1 jars **2 for 29c**

**SALAD-AID** pt **23c** qt **27c**

**LA FRANCE** A safe bluing. Pkg. **9c**

**BRAN FLAKES** Post's **10c**

**COCONUT** Baker's, moist. Yellow can. No. 1/4 size **15c**

**PICKLES** C. H. B. Dills. Quart Jars **23c**

**KISSES** Hershey's, foil wrapped in 1-lb. cellophane bags, pound **25c**

## FRESH FRUITS and VEGETABLES

**PEACHES** Fancy Crawford's, just right for canning. These are locals. Grate **47c**

**WATERMELONS** Fancy striped, on ice. lb. **1 1/2c**

**BEANS** Fresh string 3 lbs. **8c**

**SPUDS** Red locals, the best cookers—18 pounds in Free Shopping Bag **29c**

(Saturday only)

# ECONOMY MARKET

206 E. Main Free Delivery Phone 46

SATURDAY SPECIALS			
HAMBURGER STEAK, fresh ground, 3 lbs.	<b>25c</b>	PURE LARD, kettle rendered, 3 lbs.	<b>29c</b>
BEEF POT ROAST, steer beef, lb.	<b>12c</b>	VEAL STEAK, shoulder cut, milk fed, lb.	<b>15c</b>
BEEF SHORT RIBS, steer beef, lb.	<b>8c</b>	VEAL ROAST, shoulder cut, milk fed, lb.	<b>12c</b>
BEEF STEAK, round, loin steer beef, lb.	<b>10c</b>	LAMB STEAK, shoulder cut, lb.	<b>16c</b>
Leg of Lamb, milk fed, lb.	<b>17c</b>		

Eat You Way to Health the Ladino Way Use **LADINO CHEESE** from Herds Free of Tuberculosis