

Science and Rough Stuff Will Feature Tonight's Grappling Card

LETHERS TO FACE BIG RUBE WRIGHT ON DOUBLE BILL

Belcastro and McGill Pitted
in Other Half of Program
— Men Work for Go
With Savoldi Here Soon

Both scientific wrestling and unorthodox muscle mangling are in store for the fans who turn out for the double-main event card at the armory tonight, to see "Red" Sam Letthers, supple grappler from Dallas, Texas, tangle with giant Rube Wright of Los Angeles in one bout, and Pete Belcastro, wild Italian from Sacramento, come to grips with Pat McGill of Nebraska in the other.

Although Wright, the mammoth bone crusher from California, possesses 235 pounds of brown, he takes pride in clean, scientific mat work and thinks a match should go to the best wrestler, not the best fighter.

The 209-pound Dallas man, who specializes in fancy leg work and figure-four head scissors, will treat an opponent rough, if necessary, but also is inclined to work carefully and systematically on a ringmate.

Pete Has Drop Kick
Belcastro, the belligerent muscle mangle who has taken up a study of "Jumping Joe" Savoldi's famous drop kick, will furnish the punch in tonight's card, and is ready to greet his young Irish opponent with everything that will get by the eye of the referee.

Whether or not McGill will turn the tables on Belcastro remains to be seen. He is capable of handling himself under any circumstances and may resort to rough stuff himself.

Belcastro, if the drop kick he uses is as vicious as the one employed by Savoldi, may find himself outside the ring, as did the originator of the famous leg thrust in recent match.

Letthers Liked Here
Promoter Mack Lillard stated that the Belcastro-McGill match may run off with the honors of tonight's card, but Sam Letthers has used his long legs to great advantage here, stepping into the berth of a favorite with his bout against Bob Kruse last week, which he won in two straight falls.

Lillard is staging a series of elimination matches to determine a suitable opponent for Savoldi, who is scheduled to appear here in the next two weeks. Tonight's bouts will be a step further in the elimination rounds.

READY FOR RACES AT SAVAGE LAKE

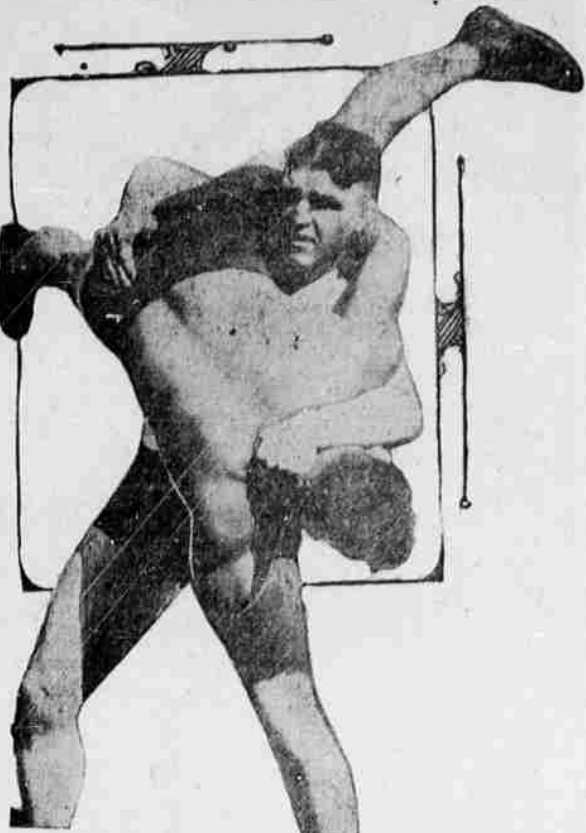
NEW TOURIST PULLMAN SERVICE TO CALIFORNIA

Now the Shasta carries a tourist Pullman, providing economical sleeping accommodations to California. Tourist berths are exactly the same size as standard Pullman berths, with fresh, clean sheets, blankets and porter service. The following fares are good in coaches, also in tourist Pullman (plus berth):

Roundtrips
To San Francisco . . . \$16.00
Los Angeles . . . \$28.70
A tourist lower berth from here to San Francisco costs only \$2.00

Southern Pacific
J. C. CARLE, Agent. Tel. 31

Pat Will Try This on Pete



Pat McGill, Nebraska Irishman, who will trade grips with Pete Belcastro at the armory tonight, shown demonstrating one of the devastating holds he has used with success in his quest of wrestling honors.

ROGUES HOST TO S-B OUTFIT FOR SEASON WINDUP

By BILLY HULEN
Secretary Southern Oregon League
Southern Oregon League Standings

	W.	L.	P.C.
Grants Pass	11	3	.786
Ewauna	8	6	.571
Medford	6	8	.429
Shaw Bertram	3	11	.214

Games Next Sunday.
Ewauna at Grants Pass.
Shaw Bertram at Medford.
Southern Oregon league's 1934 season will come to an end next Sunday with the champion Grants Pass Merchants entertaining the second place Ewauna Red Sox and the Medford Rogues playing host to Shaw Bertram at the Jackson county fairgrounds.

Regardless of how the battles come out next Sunday, the four teams have found their final resting places, with Ken Williams' high powered Grants Pass club in first place, Ewauna in second, Medford in third and Swede Risberg's Shaw Bertram outfit in the cellar.

Games Sunday will also mark the first time that Klamath Falls has gone without a league game since the season started.

At Medford, the Rogues will attempt to break their four-game losing streak with Jack Hughes on the mound while Shaw Bertram will have Dick Smith, a left hander, on the rubber with Corsetto catching. The final league game in Medford will also mark the lone appearance of Swede Risberg, former Chicago White Sox player, before Medford fans. Risberg

DROULETTE HAS CINCH ON FINAL BATTING HONORS

By Billy Hulen.
(Secretary Southern Oregon League.)
Hammering out three hits in five trips to the plate against Shaw-Bertram Sunday, Al Droulette, Grants Pass catcher, boosted his batting mark 15 points to the average of .455, to successfully fend off the vicious attack of his teammate, Clarence Ujla, who jumped from .393 to .428 in the Southern Oregon league race.

Haley, Ewauna first baseman, who held down second place last week, dropped into third when he was able to collect only one blow against Medford. However, his one hit gave him a record of registering in 13 consecutive games.

Swede Risberg, Shaw-Bertram manager and former White Sox player, holds down fourth position with his mark of .400.

Paul Hoffard, Medford outfielder, leads his team with a mark of .311. Bill Nelson, Grants Pass hurler, chalked up his eighth win of the year to retain his pitching leadership, having lost two games for a percentage of .800.

Following are official Southern Oregon league batting averages for players hitting 200 or better and playing in five or more games:

G.	AB.	H.	Ave.
Droulette, G. P.	14	35	.455
Ogle, G. P.	14	31	.428
Haley, Ewauna	13	29	.408
Risberg, S. B.	8	25	.400
Pulman, Ewauna	9	41	.390
Martin, Ewauna	13	51	.393
Wakeman, S. B.	14	57	.393
Kiger, Ewauna	12	53	.321
Hoffard, Medford	14	61	.311
Wheeler, Ewauna	13	53	.302
Santee, G. P.	11	44	.320
Fuller, S. B.	9	31	.320
Bernadou, Ewauna	11	45	.329
Wade, G. P.	9	38	.311
Hulen, Medford	7	28	.286
Earhart, G. P.	10	38	.284
McLean, Med.-S. B.	13	53	.283
Shipman, S. B.	6	23	.273
Cottrum, G. P.	7	21	.286
Wilson, Ewauna	6	25	.269
Joy, Medford	11	38	.263
McCarthy, G. P.	14	64	.250
Cogan, S. B.	14	52	.250
McClelland, S. B.	14	49	.245
Bianca, Ewauna	13	50	.240
Hughes, Medford	11	37	.218
Joanis, Medford	9	29	.207
Garrett, G. P.	14	55	.200

TENNIS TEAM TO ENGAGE G. PASS

Sunday at 9 a. m., on the junior high school courts, the Medford tennis team will play the Grants Pass tennis team. All Medford players are requested to be on the courts promptly at 9 o'clock so that the tournament will get under way on time.

The Medford team is composed of the following: Kramer Deuel, Tanselle, Wildie Pruitt, James Edmonson, Brown, Howard Hill, Sam Van Dyke, Leo Glascock, H. G. Wilson, Dr. Gillis, Joe Patton and Nevin Cope.

Just received large shipment of Fruit Canning Cans and Lids. Size No. 2 1/2. Buy now! Hubbard Bros

ROGUES HOST TO S-B OUTFIT FOR SEASON WINDUP

By BILLY HULEN
Secretary Southern Oregon League
Southern Oregon League Standings

	W.	L.	P.C.
Grants Pass	11	3	.786
Ewauna	8	6	.571
Medford	6	8	.429
Shaw Bertram	3	11	.214

Games Next Sunday.
Ewauna at Grants Pass.
Shaw Bertram at Medford.
Southern Oregon league's 1934 season will come to an end next Sunday with the champion Grants Pass Merchants entertaining the second place Ewauna Red Sox and the Medford Rogues playing host to Shaw Bertram at the Jackson county fairgrounds.

Regardless of how the battles come out next Sunday, the four teams have found their final resting places, with Ken Williams' high powered Grants Pass club in first place, Ewauna in second, Medford in third and Swede Risberg's Shaw Bertram outfit in the cellar.

Games Sunday will also mark the first time that Klamath Falls has gone without a league game since the season started.

At Medford, the Rogues will attempt to break their four-game losing streak with Jack Hughes on the mound while Shaw Bertram will have Dick Smith, a left hander, on the rubber with Corsetto catching. The final league game in Medford will also mark the lone appearance of Swede Risberg, former Chicago White Sox player, before Medford fans. Risberg

COOL Canning

Food preservation is much more simple, easier and better this modern Electric way. The Electric Range simplifies other methods of canning — enables you to employ "short-cuts" that eliminate pre-sterilizing of jars and tedious watching and stirring while cooking.

The large over-size oven, with its Automatic Temperature Control, provides a constant, even temperature for processing fruits, vegetables and meats. Perfect oven insulation keeps the heat in — prevents it from escaping into the kitchen. Your canning is quickly accomplished in cool comfort.

Why don't you enjoy hot water electrically?

NOW EVERY HOME CAN AFFORD IT

Clean, Safe and Convenient as Electric Light!

ALWAYS READY AT THE TURN OF THE TAP

AUTOMATIC ELECTRIC WATER HEATER

Scores Yesterday

Team	Score
Hollywood	9
Los Angeles	8
Mission	5
San Francisco	4
Seattle	6
Oakland	1
Portland	17
Sacramento	8
American League	
New York	4
Boston	7
Cleveland	7
Detroit	10
Philadelphia	7
Washington	11
St. Louis	6-2
Chicago	10-4
second game 10 Innings	
National League	
Boston	3-2
New York	11-10
Chicago	0
St. Louis	4
Cincinnati	7
Pittsburgh	8
At Philadelphia	8
Philadelphia	4
second game 10 Innings	
Spent Day Here — Mr. and Mrs. Harry Parger and Mrs. Wm. Gerretsen and son Gordon, from Roseburg, spent Tuesday in Medford visiting Charles Holloway, father of Mrs. Gerretsen, who is recovering from a severe stroke.	

Mexican Legal Matters:

Quick, conscientious service. No residence. No publicity. Mex. Atty. Ramos, Box 2008, Hollywood, Calif.

Where a slip means death!

MOST AMAZING PROOF EVER KNOWN OF EXTRA TRACTION AND NON-SKID SAFETY . . . UP . . . UP . . . UP . . . to 14,000 feet above sea-level! Skirting yawning chasms, tearing around 181 treacherous turns at breath-taking speeds, daredevil drivers fight their way up, grinding, pounding, away! In the annual Pike's Peak Race, where a slip means death, Firestone High Speed Tires were on the winning car. Surely this is the most amazing proof ever known of Extra Traction—Non-Skid Safety—and Dependability.

The new Firestone High Speed Tires for 1934 have the toughest, longest wearing tread Firestone has ever made. They have a wider tread of flatter contour, deeper non-skid, more and tougher rubber, giving you more than 50% longer non-skid mileage.

Every cotton fiber inside every cord is soaked and coated with Extra Rubber — eight additional pounds absorbed by every 100 pounds of cotton cords. This is Gum-Dipping, the Firestone patented process that provides extra Blotout Protection.

50% LONGER NON-SKID MILEAGE

Remember — with every Firestone Tire you get the Triple Guarantee — for Unequaled Performance Records — for Life Against All Defects — for 12 Months Against All Road Hazards! (* Six Months in Commercial Service)

Call on the nearest Firestone Dealer or Service Store today and equip your car with the Firestone High Speed Tires for 1934.

SIZE	OLD PRICE	NEW PRICE	FOUR WHEELS	FOUR WHEELS
4.40-21	\$6.64	\$5.75	\$8.90	\$3.60
4.50-21	7.31	6.30	1.01	4.04
4.75-19	7.18	6.70	1.08	4.32
5.00-19	7.64	7.20	1.14	4.56
5.25-18	8.17	8.00	1.27	5.08
5.50-17	10.15	8.75	1.40	5.60
6.00-19	16.37	12.45	2.02	8.08
7.00-20	19.83	17.10	2.73	10.92

See how Firestone Tires are made at the Firestone Factory and Exhibition Building, World's Fair

Listen to the Voice of Firestone — Featuring Gladys Scarthout — Every Monday Night over N. B. C. — W. E. A. F. Network

Firestone
MOST MILES PER DOLLAR

Southern Oregon's Mountain Roads—

—call for cool, steady nerves and FIRESTONE HIGH SPEED TIRES . . . What a satisfaction it is to KNOW that your tires are SAFE . . . that they won't blow out at the wrong moment imperiling the lives of your passengers and yourself . . . Confidence in having DEPENDABLE, SAFE tires will add to the pleasure of your driving.

SPECIAL FOR THIS WEEK ONLY

Firestone All Rubber Garden Hose
50 ft. lengths For \$3.00
25 ft. lengths For \$1.50
Tested to 250 lbs. pressure per square inch.

FIRESTONE SERVICE STORES

"ONE STOP SERVICE" Ninth and Riverside PHONE 520

Associate Dealers
Union Service Stations
Texaco Service Stations
Associated Service Stations
Moore's Central Service

COOL Canning



BETTER RESULTS AT LOW COST WITH THIS MODERN, BEAUTIFUL ELECTRIC RANGE



NEVER BEFORE A FULL TABLE TOP RANGE OF THIS QUALITY AT A PRICE SO LOW. DESIGNED FOR BEAUTY AS WELL AS UTILITY. HAS RIGID, SUBSTANTIAL ONE-PIECE, WELDED STEEL BODY. FINISHED IN BEAUTIFUL, ALL-WHITE PORCELAIN ENAMEL. LARGE SIZE AUTOMATIC OVEN WITH PORCELAIN ENAMELED INTERIOR. SPACIOUS UTILITY DRAWER BENEATH COOKING TOP. RANGE IS 42 IN. LONG, 25 IN. DEEP, HEIGHT, OVERALL 40 1/2 IN. OVEN, 18 IN. WIDE, 14 IN. HIGH, 18 IN. DEEP.



THE NEW HIGH SPEED COOKING COIL REVOLUTIONIZES ELECTRIC COOKERY — GIVES NEW SPEED — ECONOMY.

Food preservation is much more simple, easier and better this modern Electric way. The Electric Range simplifies other methods of canning — enables you to employ "short-cuts" that eliminate pre-sterilizing of jars and tedious watching and stirring while cooking.

The large over-size oven, with its Automatic Temperature Control, provides a constant, even temperature for processing fruits, vegetables and meats. Perfect oven insulation keeps the heat in — prevents it from escaping into the kitchen. Your canning is quickly accomplished in cool comfort.

Why don't you enjoy hot water electrically?

NOW EVERY HOME CAN AFFORD IT

Clean, Safe and Convenient as Electric Light!

ALWAYS READY AT THE TURN OF THE TAP
AUTOMATIC ELECTRIC WATER HEATER

THE CALIFORNIA OREGON POWER COMPANY