

Local and Personal

Born Ill—Captain Lee M. Bown of the Oregon state police is ill at his home with a severe cold.

Conner to Portland—Guy Conner left by train Saturday evening for Portland.

Reside in Medford—Lieutenant and Mrs. H. A. Barris and son Billy are now residing at 103 Mistletoe street. Lieutenant Barris is now on duty at the CCC district headquarters.

To Applegate Camp—Twelve CCC enrollees from Vancouver Barracks arrived here today on the Oregonian from the north, and were taken by truck to Camp Applegate.

Returns Sans Fish—K. P. McReynolds, junior forester at the Rogue River national forestry office, spent yesterday fishing Rogue river, but was unsuccessful, he reported today.

Suffers Scratch—L. Martin of Jacksonville filed an accident report with the city police concerning an accident at 8:15 p. m. Saturday. The report states a Mr. Hogan of Applegate suffered scratches in the wreck.

Bible Class to Meet—The weekly Bible class will meet Tuesday night at the Girls' Community club for regular study session. Mrs. E. N. Warner will present the lesson from the General Epistles.

Undergoes Operation—Ella Gillham of West Jackson street underwent an operation in Ashland yesterday. It was reported here by telephone this afternoon. She was announced getting along satisfactorily.

Successful Fishermen—Among the Medford anglers who made successful catches Sunday were George Webb and Ed Carlson, who both brought home the limit of fine trout from the Rogue river near Peter Pan camp.

Operetta Tuesday—"The Mystical Master" operetta tomorrow evening at St. Mary's academy will be presented at 8:15 p. m. A dress rehearsal was held today, attended by all the grammar school children.

Slightly Injured—Charles Washburn of Talent suffered slight injuries in an automobile accident at 12:15 a. m. Sunday. H. W. Reames of Phoenix was driving, the accident report at the police station shows.

Go to Pinehurst—Mrs. John Peterson and her daughter, Mrs. Harry Peterson of Portland, arrived in Medford Sunday, en route to Pinehurst. They were guests of Mrs. N. S. Oatman yesterday.

Gets Building Permit—L. H. Hamilton of 414 Union street received a building permit from the city today for remodeling of a residence to the extent of an addition and new roof, at the cost of \$300.

Rabbit Men to Meet—All rabbit growers of the valley are asked to meet at the Chamber of Commerce Wednesday night at 8 o'clock to consider the common problems and plans for participation in displays of the Diamond Jubilee celebration.

Report to Police—Walter B. Northridge of Camp Oak Knoll, Gortville, Cal., and Verni Stephenson of Jacksonville filed accident reports with the city police, concerning a collision at the corner of Fifth and Riverside in Medford.

Phoenix Unit to Meet—The Phoenix health unit will meet Tuesday afternoon at 2 o'clock, at the home of Mrs. John Gammill on Coleman creek. Members who have prints or pieces of plain materials suitable for quilt blocks are asked to bring them to the meeting.

Reports for Duty—Lieutenant John M. Rae, Inf.-Res., of Eugene, has been called to duty with the Civilian Conservation corps, and this morning reported for duty at the local CCC headquarters. He will spend two or three days at the offices in Medford before being assigned to a camp.

Franklin Arrested—O. N. Franklin of Ashland was arrested Sunday by the state police on charges of operating a four-wheel trailer without a license. He was arrested at the Klamath Junction, and was cited to appear before justice of the Peace L. A. Roberts in Ashland Wednesday.

House is Burglarized—Carol I. Hays of 59 Quince street reported to city police this morning that some time Sunday his house was entered and several pieces of jewelry and other articles were taken. Entrance was gained by breaking the glass in the front door, he said.

Find Indian Relics—Mr. and Mrs. Richard Stinger of Medford spent the weekend in the Klamath area as the guests of Mr. and Mrs. Ross Aubrey of Klamath Falls. They spent Sunday in the Tule lake area searching for Indian relics, and were successful in finding several, they reported today.

Face "Broken Out?"—First wash with pure Resinol Soap. Then relieve and improve sore pimply spots with soothing

Resinol

20c Any Time **ROXY** Theatre 10c

ENDS TONITE
SPENCER TRACY in
"The Power and the Glory"

Starts Tomorrow
2 FEATURES
"MY WOMAN"
and
"MADAM SPY"

20c Any Time **ROXY** Theatre 10c

ENDS TONITE
SPENCER TRACY in
"The Power and the Glory"

Starts Tomorrow
2 FEATURES
"MY WOMAN"
and
"MADAM SPY"

20c Any Time **ROXY** Theatre 10c

ENDS TONITE
SPENCER TRACY in
"The Power and the Glory"

Starts Tomorrow
2 FEATURES
"MY WOMAN"
and
"MADAM SPY"

Mr. Thomas Ill—R. A. Thomas of this city is a patient at the Community hospital this week for medical care.

Marshall in Hospital—L. W. Marshall of 450 Haven street underwent a major operation at the Community hospital Saturday and was getting along very well today.

Undergoes Operation—Mrs. R. F. Wilbur of Nogales, Ariz., underwent an operation at the Community hospital yesterday and was reported getting along nicely today.

Circle to Meet—The East Side circle of the Presbyterian church will meet on Tuesday afternoon at 1 o'clock, at the home of Miss Bullis on Florence avenue, it was announced today.

Trace Recorded—Federal weather bureau reported this morning that a trace of moisture was recorded in the period between 5 p. m. Sunday and 5 a. m. today.

Stop in Medford—William Sproule, former president of the Southern Pacific company, now retired, and Mrs. Sproule, were visitors in Medford over Sunday, from San Francisco. They left here this morning by motor.

Mr. Gray Home—Charles E. Gray, residing near Gold Hill, who underwent a major operation at the Community hospital recently, is reported recovering satisfactorily and has been removed to his home.

Come to Headquarters—Additional men have been ordered to headquarters detachment CCC, from Camp Randall Ranger station. They are Frank S. Cipriane, Arthur Gardner, John T. Zuchowski and Ben J. Marterano, all enrolled from Illinois.

Seek Youths—City police were notified this morning that LaVerne Atkins, 14, and Leonard Atkins, 12, were missing, apparently having run away some time Sunday night. Patterson is from Fort Klamath and Atkins from Central Point.

Marines to Leave—Captain Oliver A. Dow, company commander of Camp Tiller, was a visitor at the Medford CCC district headquarters this morning. He will be relieved of duty as camp commander May 21, and will return to San Francisco, where he is to be stationed with the Marine corps. Captain George L. Maynard, formerly camp commander at Camp McKinley, will be returning to San Francisco also. Captain Maynard is also a member of the Marine corps.

Minor Collision—No one was injured in the automobile collision Sunday morning about 10 o'clock on the Trail-Elk Creek road, according to a report at the forestry offices here. Fred J. Warner, forestry superintendent at the Upper Rogue River CCC camp, and C. A. Walker were driving the car, which met on a very narrow road. Fenders were bent by the impact and minor damages resulted to both cars.

Chief Justice Beals

Chief Justice Walter Beals of the Washington Supreme Court will be the principal speaker at the Golden Anniversary banquet of Willamette University College of Law to be held on May 26 at Salem. This law school is the second oldest on the Pacific coast, and has hundreds of prominent alumni in all parts of the world. It is anticipated that this will be one of the largest gatherings of bench and bar that has ever assembled in Oregon.

Export Wheat—PORTLAND, Ore., May 7.—(AP)—Emergency export corporation's bid for soft white wheat for foreign shipment, 77 cents bushel.

Export Wheat—PORTLAND, Ore., May 7.—(AP)—Emergency export corporation's bid for soft white wheat for foreign shipment, 77 cents bushel.

Export Wheat—PORTLAND, Ore., May 7.—(AP)—Emergency export corporation's bid for soft white wheat for foreign shipment, 77 cents bushel.

Export Wheat—PORTLAND, Ore., May 7.—(AP)—Emergency export corporation's bid for soft white wheat for foreign shipment, 77 cents bushel.

Export Wheat—PORTLAND, Ore., May 7.—(AP)—Emergency export corporation's bid for soft white wheat for foreign shipment, 77 cents bushel.

Export Wheat—PORTLAND, Ore., May 7.—(AP)—Emergency export corporation's bid for soft white wheat for foreign shipment, 77 cents bushel.

Export Wheat—PORTLAND, Ore., May 7.—(AP)—Emergency export corporation's bid for soft white wheat for foreign shipment, 77 cents bushel.

Export Wheat—PORTLAND, Ore., May 7.—(AP)—Emergency export corporation's bid for soft white wheat for foreign shipment, 77 cents bushel.

Export Wheat—PORTLAND, Ore., May 7.—(AP)—Emergency export corporation's bid for soft white wheat for foreign shipment, 77 cents bushel.

Export Wheat—PORTLAND, Ore., May 7.—(AP)—Emergency export corporation's bid for soft white wheat for foreign shipment, 77 cents bushel.

Export Wheat—PORTLAND, Ore., May 7.—(AP)—Emergency export corporation's bid for soft white wheat for foreign shipment, 77 cents bushel.

Export Wheat—PORTLAND, Ore., May 7.—(AP)—Emergency export corporation's bid for soft white wheat for foreign shipment, 77 cents bushel.

Export Wheat—PORTLAND, Ore., May 7.—(AP)—Emergency export corporation's bid for soft white wheat for foreign shipment, 77 cents bushel.

Export Wheat—PORTLAND, Ore., May 7.—(AP)—Emergency export corporation's bid for soft white wheat for foreign shipment, 77 cents bushel.

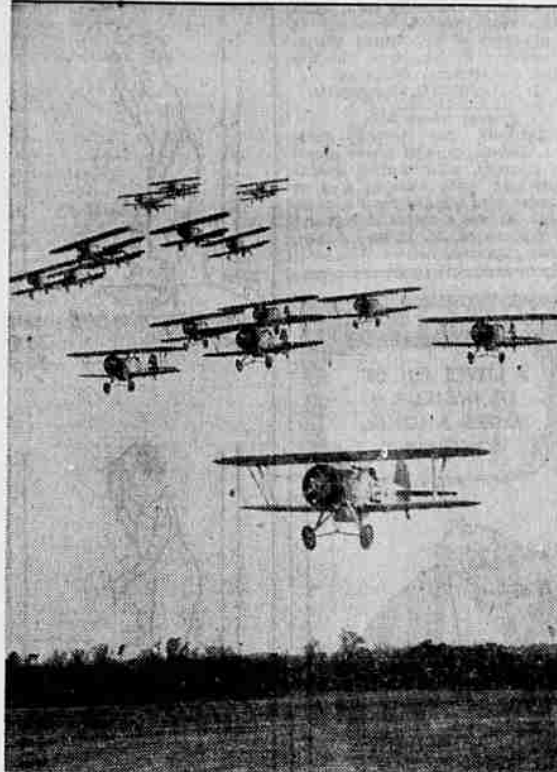
Export Wheat—PORTLAND, Ore., May 7.—(AP)—Emergency export corporation's bid for soft white wheat for foreign shipment, 77 cents bushel.

Export Wheat—PORTLAND, Ore., May 7.—(AP)—Emergency export corporation's bid for soft white wheat for foreign shipment, 77 cents bushel.

Export Wheat—PORTLAND, Ore., May 7.—(AP)—Emergency export corporation's bid for soft white wheat for foreign shipment, 77 cents bushel.

Export Wheat—PORTLAND, Ore., May 7.—(AP)—Emergency export corporation's bid for soft white wheat for foreign shipment, 77 cents bushel.

FLYING DOWN TO GUANTANAMO



In the largest mass formation flight ever attempted by the marine corps, 20 airplanes took off from Quantico, Va., for Guantanamo bay, Cuba. Shown as they started the flight, the planes will base at Guantanamo bay and take part in the navy's maneuvers in the Caribbean (Associated Press Photo)

SOUTHERN OREGON MEDICAL SOCIETY MEETING TUESDAY

memoriam, president's address, by Dr. Sweeney. Luncheon will be served at 12:30 o'clock on the lawn at the Sweeney home, just north of Medford on the Central Point road.

Scientific papers to be given will include: "Post-Partum Care"; illustrated with moving pictures, by Dr. G. S. Beardley of Eugene, discussion to be opened by Dr. Robert M. Coffey of Portland; "Protein and Edema"; by Dr. A. H. Ross of Eugene, discussion to be opened by Dr. A. W. Holman of Portland and Dr. B. G. Bailey of Grants Pass.

The afternoon session will open at 2 o'clock with the following program to be presented:

"Some New Ideas on the Treatment of Head Injuries," illustrated with lantern slides, Dr. Geo. W. Swift, Seattle, Wash.

Discussion opened by Dr. Eugene W. Rocky, Portland, Ore.

"Some Problems in Medical Legislation," Dr. Thomas W. Watta, Portland, Ore.

"Early Diagnosis of Middle Ear and Mastoid Disease," Dr. Ralph A. Fenton, Portland, Ore.

Discussion opened by Dr. A. C. Seely, Roseburg, Ore.

The regular May meeting of the council of the Oregon State Medical society will be held at the Guild hall immediately after the afternoon session. An invitation to attend is extended to all doctors.

The executive board of the Women's Auxiliary to the State Medical society will meet at the home of Mrs. Chas. T. Sweeney, state president. All doctors' wives are invited.

A social gathering will be held at Mrs. Sweeney's for the women at 2 o'clock tomorrow afternoon, the morning session to open at the Presbyterian church at 10 o'clock.

Export Wheat—PORTLAND, Ore., May 7.—(AP)—Emergency export corporation's bid for soft white wheat for foreign shipment, 77 cents bushel.

Export Wheat—PORTLAND, Ore., May 7.—(AP)—Emergency export corporation's bid for soft white wheat for foreign shipment, 77 cents bushel.

Export Wheat—PORTLAND, Ore., May 7.—(AP)—Emergency export corporation's bid for soft white wheat for foreign shipment, 77 cents bushel.

Export Wheat—PORTLAND, Ore., May 7.—(AP)—Emergency export corporation's bid for soft white wheat for foreign shipment, 77 cents bushel.

Export Wheat—PORTLAND, Ore., May 7.—(AP)—Emergency export corporation's bid for soft white wheat for foreign shipment, 77 cents bushel.

Export Wheat—PORTLAND, Ore., May 7.—(AP)—Emergency export corporation's bid for soft white wheat for foreign shipment, 77 cents bushel.

Export Wheat—PORTLAND, Ore., May 7.—(AP)—Emergency export corporation's bid for soft white wheat for foreign shipment, 77 cents bushel.

Export Wheat—PORTLAND, Ore., May 7.—(AP)—Emergency export corporation's bid for soft white wheat for foreign shipment, 77 cents bushel.

Export Wheat—PORTLAND, Ore., May 7.—(AP)—Emergency export corporation's bid for soft white wheat for foreign shipment, 77 cents bushel.

Markets

Portland, May 7.—(AP)—Cattle: 1500; calves 125; 25@35c higher. Steers, good, common and medium, \$3.75@6.35; heifers, common and medium, \$3.25@5.25; cows, good common and medium, \$3@4.75; low cutter and canners, \$1.75@3.00; bulls, good and choice, \$3.50@4.00; cutter, common and medium, \$2.75@3.50; vealers, good and choice, \$4.50@6.00; cull, common and medium, \$2.00@4.50; calves, good and choice, \$3.50@4.00; common and medium, \$2.00@3.50.

HOGS 2800: 15@25c higher. Light-weight, good and choice, \$3.50@4.00; medium weight, good and choice, \$3.00@4.00; heavy weight, good and choice, \$3.10@3.75; packing sows, medium and good, \$2.35@3.00; feeder and stocker pigs, good and choice, \$3.00@3.50.

SHEEP 1800: steady to weak; spring lambs, good, \$7.75@8.35; medium, \$6.50@7.75; lambs, good and choice, \$6.50@7.00; common and medium, \$5@6.50; yearling wethers, \$3.50@6.00; ewes, good and choice, \$2.25@3.00; common and medium, \$1.00@2.50.

PORTLAND, May 7.—(AP)—Butter: prints, A grade, 22c; parchment wrapper, cartons, 23c; quantity purchases, 1/2 lb. less; B grade, parchment wrapper, 21c; cartons, 22c.

BUTTERFAT—Portland delivered: A grade delivered at least twice weekly. 10c; country routes, 15c lb.; B grade or delivery fewer than twice weekly. Portland, 15c; country routes, 15c lb.; C grade at market.

EGGS—Pacific Poultry Producers' selling prices: Overalls, 15c; fresh extra, 17c; standards, 15c; medium-15c dozen. (Cartons 1 cent higher.) Buying price of wholesalers: Fresh specials, 17c dozen; extra, 15c; extra medium, 14c; medium firsts, 11c; pullets, 11c; undergrades, 11c dozen. CHEESE—22 acre, Oregon triplets, 9 1/2c; loaf, 11@12c lb.; brokers will pay 1/2 cent below quotations.

MILK—Contract price, 4 per cent. Portland delivery, \$1.95 cwt.; B grade cream, 37 1/2c lb.

COUNTRY MEATS—Selling price to retailers: country killed hogs, best butchers, under 80 lbs., 8@8 1/2c; vealers, 90-100 lbs., 7 1/2@8c lb.; light and thin, 5@6c lb.; calves, 4@5c; yearling lambs, 6@10c; spring lambs, 15@16c lb.; ewes, 4@5c lb.; canner cows, 3@4c lb.; cutter cows, 3@4c lb.; bulls, 3@5 1/2c lb.

POULTRY—Portland delivery, colored fowls, 15@16c; leghorn fowls, 11@13c; broilers, 13@15c; stags, 9c; roosters, 5c; Pekin ducks, 12c; colored, 10c; geese, 10c lb.

POTATOES—Local white and red, 75c@81c central; Yakima, 90c@81c; Deschutes, 81c; bakers, 81c. NEW POTATOES—Shafter white, \$2.75@3; garnet, \$2.50@3.

STRAWBERRIES—Oregon, 24c, gold dollar, \$1.65@1.75; Sacramento 24c, \$1.65@1.75 crate.

Hay—Buying price from producer: Alfalfa No. 1, new crop, \$14@15; eastern Oregon timothy, \$17; timothy grasses, blended, \$15; oats, \$17.50 ton; vetch, \$14; Willamette valley timothy, \$15.

PORTLAND, May 7.—(AP)—Grain: Wheat: Open High Low Close May 68 1/2 71 68 1/2 71 July 69 1/2 71 69 1/2 71

CHICAGO WHEAT

WALL ST. REPORT

PORTLAND PRODUCE

PORTLAND WHEAT

CRATERIAN

Now!

Shout It From The Housetops!

A screen epic that takes its place with the great pictures of all time!

Wallace BEERY

VIVA VILLA!

with **LEO CARRILLO**

FAY WRAY-STUART ERWIN

JOSEPH SCHILDKRAUT

GEORGE E. STONE

DONALD COOK

UPPER WORLD

HOTEL WILLARD

Klamath Falls

Chicago Wheat

Wall St. Report

Portland Produce

Portland Wheat

Craterian

Now!

Shout It From The Housetops!

A screen epic that takes its place with the great pictures of all time!

Wallace Beery

Viva Villa!

with **Leo Carrillo**

Fay Wray-Stuart Erwin

Joseph Schildkraut

George E. Stone

Donald Cook

Upper World

Hotel Willard

Klamath Falls

In "Upper World"



Warren William and Mary Astor, with Ginger Rogers, have featured parts in "Upper World", coming to the Rialto theatre tomorrow. It is based on the thrilling story by Ben Hecht, who aims to show that philandering and crime are as prevalent in the upper as well as the lower strata of society.

Colonel Covington Here — Colonel W. A. Covington of San Francisco, in command of the San Francisco recruiting district for the United States army, is spending today in Medford, inspecting the local recruiting office which is in charge of Sergeant Jennings D. Lowman. Tomorrow Colonel Covington will go to Klamath Falls to inspect the office there, before returning to the bay city. Sergeant Lowman is also in charge of the Klamath office.

Starred Communication of Reames Chapter, O. E. S., Wednesday evening at 8 o'clock. Initiation. Social night. Visiting members invited. **HATTIE M. ALDEN, Secy.**

Splitting Headaches

Until she learned why she was always miserable — and found out about MR Tablets (Nature's Remedy). Now she gets along fine with everybody. This safe, dependable, all-vegetable laxative brought quick relief and quiet nerves because it cleared her system of poisonous wastes — made bowel action easy and regular. Thousands take MR daily. It's such a sure, pleasant corrective. Mild, non-habit-forming. No bad after-effects. At your druggist's — 25c. **MR TO-NIGHT**

TUMS Quick relief for acid indigestion, heartburn. Only 10c.

RIALTO

ENDS TONIGHT

RUTH CHATTERTON

"Journal of a Crime"

Starting Tomorrow!

More Dangerous Than The Underworld

Ben Hecht's sensational drama of neglected husbands... trying to end their happiness with blonde poison... breaking the shackles of one woman to become the slave of another!

UPPER WORLD

HOTEL WILLARD

Klamath Falls

KLAMATH BASIN'S LEADING HOTEL

We make a specialty of entering to commercial travellers. Modern, light sample rooms.

Popular price Dining Room and Coffee Shop.

W. D. Miller, Pres.

S. W. Percy, Mgr.

STUDIO 20c

THEATRE Anytime

NOW PLAYING

Until Tomorrow Nite

One of the year's "BEST TEN!"

If you live to be a hundred you'll never see anything like it!

CHARLES LAUGHTON

The Private Life of HENRY VIII

Also Walt Disney's Silly Symphony in Color "Grasshoppers and Ants"

SERVICE

PEACE

The deep solemnity and beauty of funeral services here serves as a very tangible comfort for those who are left to mourn. And it is gratifying to know that cost plays no part in the unvarying quality of our service.

CONGER

FUNERAL PARLOR

WEST MAIN AT NEWTOWN

Solicited for membership in Order of Golden Rule and declined.

WHEN A DAME LIKE THIS SNARES A MAN—SOME WIFE HAS FALLEN DOWN ON HER JOB!

UPPER WORLD

HOTEL WILLARD

Klamath Falls

KLAMATH BASIN'S LEADING HOTEL

We make a specialty of entering to commercial travellers. Modern, light sample rooms.

Popular price Dining Room and Coffee Shop.

W. D. Miller, Pres.

S. W. Percy, Mgr.