

### CARAVANS COMING FROM FAR POINTS TO VISIT JUBILEE

Medford Will Be Mecca for Coast-Wide Pilgrimages Is Word to Headquarters — Publicity Is Increasing

Further evidence of the coastwide and national attention Medford is already receiving in connection with Oregon's Diamond Jubilee celebration in Medford next June 3 to 9 is shown in preparations now underway for auto caravans to Medford from Canada, Washington, many sections of Oregon and from numerous parts of California.

The arrival of these caravans will be the feature of Trail Day, June 6, bringing hundreds of visitors from all parts of the Pacific coast. One caravan is starting from Victoria, B. C., another from the state of Washington, several from different sections of Oregon and two or three from the state of California.

Early information indicates that every county in California will be represented, in addition to nearly 100 secretaries and managers of chambers of commerce. Complete plans for the caravans have not yet been entirely completed but are systematically progressing. With the arrival of these visitors from the widely scattered sections of the west, southern Oregon is assured of a wealth of favorable advertising which is also seen as the foundation for attracting new settlers to this section.

As a result of celebration preparations, Medford and southern Oregon have received publicity over the entire nation. Letters have been received from residents of Ohio, Illinois, Pennsylvania, Colorado, Washington and other states seeking more information concerning the event. Press services have expressed interest and have sent out a number of jubilee pictures to many subscribing newspapers. Magazine stories are also appearing in a short time.

Last week San Francisco and bay papers devoted much space to the celebration as a result of a visit there of two local young women, Miss Beth Chase and Miss Boardman, who were given a royal welcome by the bay cities.

Medford is in the limelight throughout the length of the coast, giving further assurance that at least 50,000 people will have visited this city and Jacksonville during Jubilee week.

Preparations for the celebration are rapidly advancing, with every detail of the big endeavor receiving careful attention to insure the complete success of what is planned to be the outstanding event in the west this year.

### G. P. IRRIGATION LOANS REFUSED

GRANTS PASS, April 25.—(Sp.)—The board of directors of the Reconstruction Finance corporation's drainage division is "unable to take favorable action" on refinancing the Grants Pass Irrigation district, according to a telegram received here by the Grants Pass district's board and by O. S. Blanchard, attorney for the water-users' committee.

Information received by local irrigation officials has been that a district application once rejected, is very difficult to reopen. Blanchard said Saturday. For this reason the local district is anxious to learn whether a rejection has already been entered or whether it is only contemplated. Information in what part of the district's presentation or appraisal might meet the disapproval of the RFC board was also sought here, to determine whether changes might be made that would alter the RFC board's decision.

### Overnight to PORTLAND AND SAN FRANCISCO

It's the best way to travel because you lose no time whatever. You get aboard the train. You go to sleep in a big, roomy berth (6 feet, 2 inches long and 3 feet, 1 inch wide, to be exact). While you sleep, an experienced engineer drives you swiftly and smoothly to your destination. Two may occupy berth at no additional cost.

These fares are good in Standard Pullman cars (plus Pullman charge):

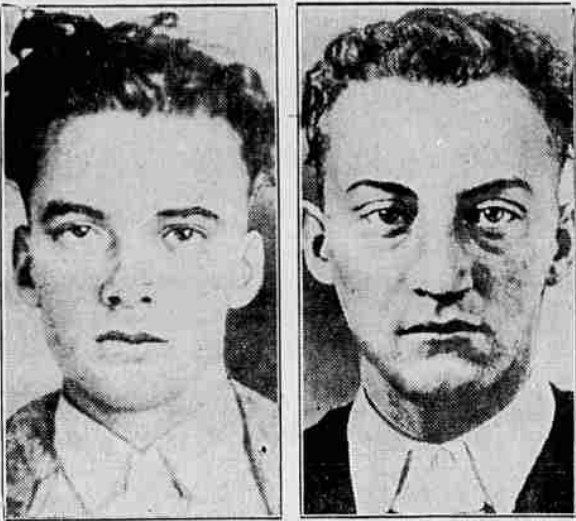
ROUNDTIPS TO SAN FRANCISCO \$16.65 TO PORTLAND 13.05

Pullman charges have been cut one-third. Delicious meals in the dining car for as little as 80¢. Still lower fares are offered for travel in coaches and chair cars:

ROUNDTIPS TO SAN FRANCISCO \$16.00 TO PORTLAND 11.25

**Southern Pacific**  
J. C. CARLE, Agent  
Tel. 34.

### COLORADO CONVICTS IN ESCAPE



Officials of the Colorado state penitentiary at Canon City pushed a search for Raymond Perry (left) and Claud Reeves (right), convicts who escaped from the prison. Three other prisoners were captured soon after their attempt to flee. (Associated Press Photos)

### \$157,000 LOANED FARMERS OF AREA PAST SIX MONTHS

Farm loans for the Gold Hill, Phoenix and Medford N. P. L. A. during the past six months, have totaled \$157,000 in 46 loans, according to figures made known today by Leland J. Knox, secretary and treasurer for the association. Loans are also being made in other sections of the county, through other N. P. L. A. representatives.

Mr. Knox, who is also correspondent for the land bank commissioner's loan fund, stated that the federal land banks make loans only upon first mortgages on farm lands.

"Loans may be made up to \$50,000 and for not less than \$100 to any one individual, but preference is given to loans of less than \$10,000. Loans from \$25,000 to \$50,000 may be made only with the approval of the land bank commissioner. No loan can exceed 50 per cent of the appraised normal value of the land mortgaged and 20 per cent of the appraised value of the permanent, insured improvements thereon," he pointed out.

No loans are being made under the Medford or Talent Irrigation district pending the completing of the refinancing program, according to Mr. Knox.

Announcement has been received here by Mr. Knox, that hereafter, the federal land bank loans and land bank commissioner's loans will be made through the federal land bank in bonds of the federal farm mortgage corporation, which bonds are guaranteed by the United States gov-

ernment, both as to principal and interest.

According to word from Wm. L. Myers, governor of the Farm Credit administration, the bonds are as readily marketable as United States government bonds, are lawful security for 15-day borrowings by member banks of the federal reserve system, and are exempt from all federal, state, municipal and local taxation, except surtaxes and estate, inheritance, and gift taxes.

The bonds are considered lawful investments and may be accepted as security for all fiduciary trust and public funds of which the deposit or investment is under the authority or control of the government.

The corporation bonds are issued in denominations of \$100, \$500, \$1,000, \$5,000 and \$10,000. Odd amounts allowed on loans will be paid in cash, and where it is necessary for the association to pay taxes, they also will be paid in cash, Mr. Knox said.

Mr. Myers' statement points out that "loans which have been applied for and approved, but on which the cash has not been paid out, as well as those approved by the bank in the future, will be financed on the above basis.

In the Eagle Point district the Rogue River National Farm Loan association has Ross Kline as secretary, and Warren Patterson is secretary for the Central Point N. P. L. A. in that section. F. L. Nutter is secretary at Ashland, Mr. Knox said.

Golden Guernsey milk and cream at Crystal Springs Dairy, cor. 1st and No. Grape. Milk 30¢ per gallon; coffee cream, 35¢ per qt. at plant. Phone 960.

Sting rays of South America lurking in the mud sting fishermen who accidentally tread on them.

A modern dwelling has been made of the house in which General Sherman had his headquarters after seizing Atlanta, Ga., during the Civil war.

### ELECTRIC HAND HOLDS CONTROL WARDS DISPLAY

Pedestrians stopping before the show windows of Montgomery Ward and company's local store on South Central today were seen to operate a number of illuminated and mobile displays by merely touching the window glass.

A thin, disc-shaped sheet of tin-foil fastened tight against the inside of the window pane does the trick. It is connected by means of a hair-like wire to an electrical device or "magic box" which is concealed from view.

Some observers were referring to the device as an "electric hand," the nearly invisible wire resembling a "nerve" and the magic box an "electric brain." Onlookers could, by touching the "hand," command the fascinating contraption to operate this or that display in the window, whether it be a fan, a washer, a vacuum cleaner, or an illuminated display.

Through the window displays responded when a pedestrian placed his hand on the glass near the disc, the so-called "electric hand" is a thousand times more sensitive than the human touch.

Engineers of the Westinghouse Lamp company, who designed and built the device in their laboratories at Bloomfield, New Jersey, say that an electric current of 1 micro-ampere, or two millionths of one ampere, operates the device. It consumes only 65 millionths of one watt, they say. A standard 25-watt Mazda lamp consumes nearly 400,000 times as much wattage.

The heart of the mechanism is an amplifier tube, similar to, but much more sensitive than an ordinary radio tube. Electricity flowing through this tube is controlled by the tin-foil disc which forms one-half of a condenser.

A pedestrian, touching the window, forms the other half of the condenser.

At the world's fair in Chicago last year a larger display operated by this same principle attracted more spectators than any other feature at the fair," according to C. D. Bean, local Montgomery Ward manager.

For Garden Plowing Tel. 912-J.

### DELINQUENT TAX BURDEN SHARING NEEDED, IS VIEW

Multnomah county finds itself in due in large part to the fact that the county must pay out of its general fund the full amount of taxes demanded by the state, regardless of delinquencies in tax payments," the commission's annual financial report which was submitted to the governor said.

Advances made by the county to the state now exceed \$1,000,000, the report continued. "This has become a serious burden on Multnomah county, and all other counties in the state, which cannot be lifted until tax collections return to normal."

The commission also expressed the belief that the entire industrial and commercial structure of the community rather than just the owner of real property, should share the obligation of financing old age pensions.

PORTLAND, April 25.—(AP)—The burden of tax delinquencies should be shared by the state rather than placed all on counties, the Multnomah county tax supervising and conservation commission pointed out to Governor Julius L. Meier today.

"The financial difficulty in which

### Wool production in 30 northern and southern hemisphere countries which produce 80 per cent of the world total was 8 per cent less in 1933 than the record production in 1932.

In order to give remaining rural schools better financial support, the Kansas state board of education favors eliminating 2000 districts where the attendance is 10 pupils or fewer.

### IVY POISONING

Soothe burning itching torment quickly and help nature clear the irritated skin with mild, effective

### Resinol

with your old battery

### BATTERY BARGAINS

BIG SAVINGS ON POWERFUL LONG LASTING BATTERIES Fully Guaranteed 6 volt - 13 plate Defender \$3.56

### OIL SALE

Greater Savings on Better Oil for Modern High Speed Motors LONG-RUN OIL

... is the finest pure western oil your money can buy. It is specially refined by one of the world's largest refiners of quality oils, by a costly process that conquers the heat and punishment of high speed engines, and gives exceptional freedom from carbon. This full-bodied, highly refined all-weather oil is guaranteed to satisfy or your money back.

5 GALLONS \$1.69 All Grades S.A.E. 20 to 50 In Your Can

When You Buy Brake Lining, Safety and Dependability Should be Your FIRST Consideration SUPREME Molded Brake Block Material

... will not glaze, roll up, chatter, lock wheels, absorb oil or water. The most dependable and priceable material for cars with internal brakes. Lasts longer, provides softer pedal and holds adjustment better than any other. Can be supplied in sets cut to fit your car, or you may exchange your old brake shoes for new ones, lined with this superior lining.

ASK FOR SPECIAL SALE PRICES LINED BRAKE SHOES for Popular Cars at LOW SALE PRICES

### PISTON RINGS

For All Cars "Olympic" MUFFLERS For All Cars and Trucks

At sensationally low prices. Change your rings NOW and increase the efficiency of your motor. "Step Cut" Compression Rings, all sizes—each 13c

"Oil Control" Oil Rings, 22c all sizes—each. Piston Ring Expanders Save oil and gas by making piston rings fit more securely. 6c

### SAVINGS Always ON TIRES at Our LOW Prices

There's only one answer to the tremendous popularity of "Western Auto" tires. That is VALUE, as measured in terms of service... of mileage, freedom from trouble, lasting safety and traction... AND LOW PRICE... Millions of these tires are in daily use, delivering Low Cost Mileage... Try Western Giants and Wear-wells — and SAVE!

ASK FOR PRICE ON SIZES NOT SHOWN

30x3 1/2 Cl. Wear-well \$3.23 29x4.40-21 Wear-well \$3.69 30x4.50-21 Wear-well \$4.15 28x4.75-19 Wear-well \$4.40

Ask for Low Prices on Western Giants World's Oldest and Largest Exclusive Retailers of Auto Supplies More Than 150 Stores in the West

### Western Auto Supply Co.

101 S. Riverside Phone 128

### GLARE SHIELD

Hooks on solid glare shields... improves view. Other Shields, 13c to \$1.76

### STRONG PADLOCK

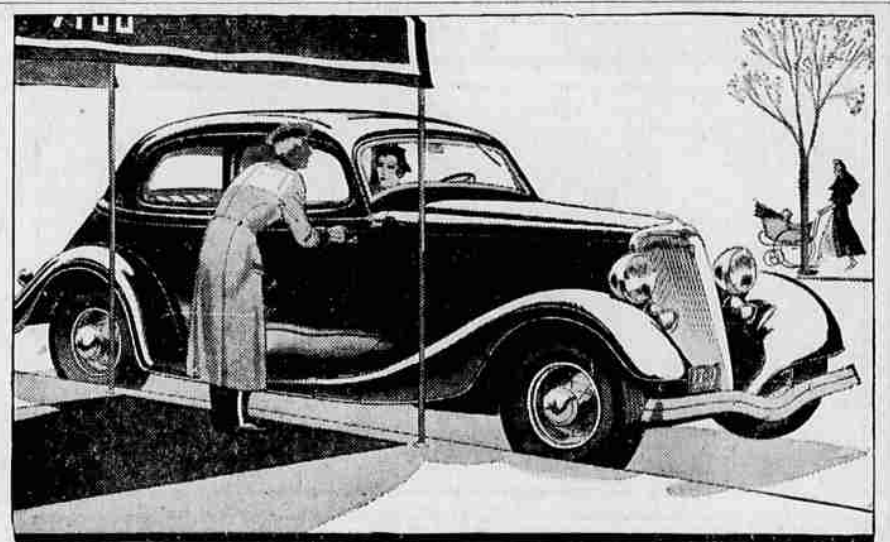
Finished in nickel and enamel. Two keys. 23c

### 5-CELL FLASHLIGHT

Focusing type, seamless nickel-plated brass, intermittent and permanent contact, with bulb, less batteries. 1800 Ft. Beam. 88c

### CLEARANCE LAMP

Black enamel finish... with blue or green lens. 33c



### HERE'S THE NEW SMART Ford Victoria

### FORD V8

HERE is the climax of 1934 Ford car design. From its gracefully-slanted radiator grille to its smoothly-tapered rear, this new VICTORIA says "STYLISH" in every air-streamed line. Its extra smartness of line, and brilliant enamel finish, will let you park it proudly beside cars costing five times as much — But this car's beauty is not just skin deep. — Consider, for instance, the proved dependability and championship performance of the SEE THE VICTORIA AT YOUR NEAREST FORD DEALER'S

FORD RADIO PROGRAM — With Waring's Pennsylvaniaans: Sunday and Thursday Evenings—Columbia Network

### See the New Ford V-8 Cars for 1934 Now On Display

### C. E. GATES AUTO CO.

Sixth and Riverside. Phone 141

### Seat Cover Sale

Form Fitting Slip-On Seat Covers 98c and up

Leader \$ .98 Duro, as shown 1.58 Hollywood 2.30

Kustom-Bilt Seat Covers Cover seats and sides up to window line. Made to order in many smart new patterns. According to make and style \$4.35 up

### AMERICAN HOME HOUSE PAINT

Guaranteed High Grade 2 Gals. \$2.95 One Gallon \$1.62

### "HAND EYE" SOAP

Antiseptic and harmless to the skin. 12-oz. can... 9c

### "Presto" Glass Cleaner

Rub on... off, cleans glass or metal! Can 23c

### FOLD-DOWN LUGGAGE CARRIER

Very strong. Black enameled. Folds down flush with neighborhood when not in use. Easily clamped on. 71c

### PATCH CEMENT

Rubber cement for patching tubes and other purposes. TUBE 4c

### Engine Cleaning Brush

Convenient handle, stiff steel bristles... 17c

### ROUND CUT TUBE PATCHES

Red rubber, 1 1/4" size. Bevel cut. Stick tight. Rubber Puncture Plug Push stem through from inside. Will not stick to tube. 6c

### 6-in-1 Ignition Wrench Set

3 wrenches, double end, in slide holder... 24c

### 12x14 Inch CHAMOIS

A good quality well tanned chamois 27c

### LEATHER FACED CANVAS GLOVES

Pair 29c High grade, stungly stitched canvas work gloves with elastic knit wrist bands, and tough leather palms.