

NEW RECORDS OF LIFE OF LINCOLN ARE DISCOVERED

Personal Physician Was Southern Sympathizer Doctor's Wife Reveals — Personality Won Family

NEW YORK.—(UP) New historical facts about Abraham Lincoln have just come to light through the enterprise of Margaret Deland, who discovered that the wife of Lincoln's family physician, Dr. Robert Stone, had a considerable store of personal reminiscences which had never before been recorded. Mrs. Deland has begun the recording of these reminiscences in an article published by the Woman's Home Companion.

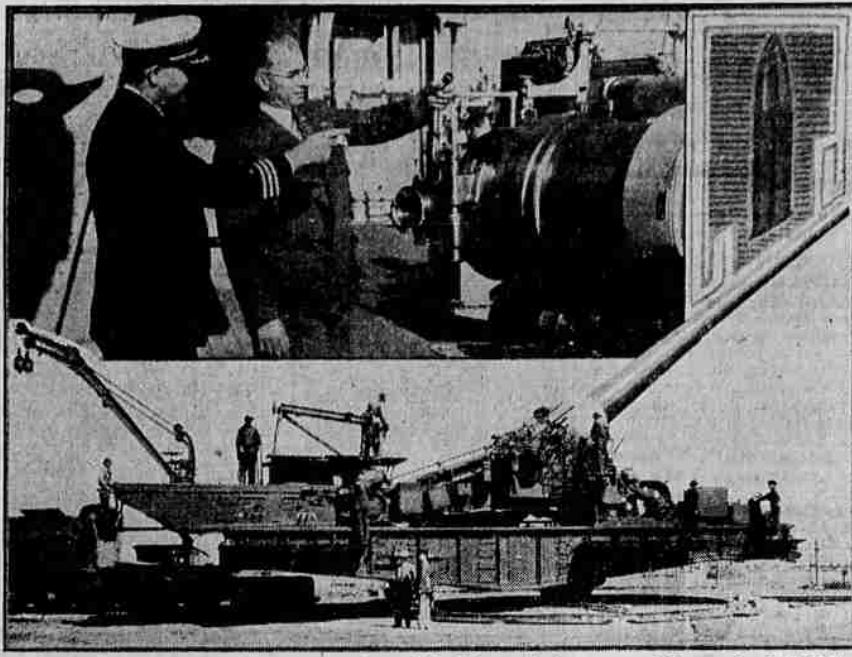
It is interesting to note that Lincoln's health, during his incumbency of the presidency, was in the hands of a physician who was generally regarded as a southern sympathizer. Dr. Stone's wife was, in fact, a cousin of Robert E. Lee, and it was even gossiped around Washington by southern sympathizers that Lincoln's kindness to Mrs. Stone was "an effort to ingratiate himself with General Lee against the time when Lee should take Washington."

The Civil war was already under way when Lincoln first sent for Dr. Stone to come to the White House. Mrs. Stone was shocked by the summons. She felt that any connection between her family and Lincoln would be regarded by her Confederate friends as a traitorous act against her cousin, General Lee. But her husband decided to go.

"A doctor can't choose his patients," Dr. Stone explained to her. "I don't know why he wants me, because he must know my southern affiliations."

Another guest in the house, a rabid southern sympathizer, urged Dr. Stone to go. "It's the opportunity of your life," this man remarked. "Go and kill him!"

Army and Navy Know Their Controlled Power



Depleted above is Earl B. Gilmore, president of the Gilmore Oil Company, and Commander F. H. Kelley of the U. S. S. Pennsylvania, flagship of the Pacific fleet, discussing the controlled power feature of modern anti-craft guns. Below is pictured Gilmore executives inspecting a huge 14-inch Army Coast Defense gun at Fort McArthur, Calif. The latter can fire infallibly at a target 23 miles away because the power of the slow-burning smokeless powder behind the 1560 pound projectile is controlled. Gilmore engineers point out that this same controlled power feature is achieved with new Gilmore Red Lion gasoline, just announced this week, which directs and sustains power on the piston head for the full stroke.

But Lincoln personally soon won over the hostile family. "My husband loved Lincoln, and couldn't see anything wrong with him, except his manners," writes Mrs. Stone. "Of course the poor man had no manners."

When Lincoln died, the Stones were under suspicion. Mrs. Stone, to overcome that suspicion, bought all the crepe she could find in the available stores and covered the entire front of the doctor's house with it, she explained her action by saying: "It was known that I was General Lee's cousin, and people had gone so mad with hate that I thought they

might burn our house down."

When soldiers came to get Dr. Stone to go to Lincoln's bedside on the night of the assassination, there was some doubt as to whether the summons was an ordinary professional one, or an arrest with a drum-head court-martial in prospect. Mrs. Stone ran down the steps of her house after the soldiers and screamed at them, "Don't let any harm come to my husband!" Then, when the soldiers paid no attention, she stood weeping on the sidewalk, sobbing: "They will kill my husband, just because I am Lee's cousin! They are beasts, those Yankee soldiers!"

But it turned out that the doctor was not wanted as a spy or traitor, but in hopes that he would be able to alleviate the president's suffering.

The historical importance of Mrs. Deland's new effort is that it shows very clearly Lincoln's broadmindedness and tolerance, in employing as his personal physician a man whose affiliations with the enemy were very close and intimate. Lincoln judged Dr. Stone a man of simple honor, who would never take advantage of his contact with the White House, and when Lincoln reached a judgment of this kind he invariably stood by it, through thick and thin.

PLAN TO RESTORE LARGEST TEMPLE OF ANCIENT ROME

Edifice Dedicated To Venua and Rome and Designed By Emperor Hadrian Slated For Reconstruction.

By THOMAS B. MROGAN
United Press Staff Correspondent
ROME.—(UP)—The largest of all the temples of Imperial Rome, dedicated to Venua and Rome and designed by the Emperor Hadrian, is about to be restored.

For centuries the massive gray granite and white marble columns of this temple lay broken and abandoned underground on the site just as they had been pulled down in one of the savage invasions of the barbarians in the last centuries of the Roman empire.

Some 60 years ago they were unearthed, and a project was put forward by the archeologists for reconstructing the ancient temple. The scheme never came to anything, but in 1904 the celebrated curator of Roman antiquities, Giacomo Boni, put forward the same ideas.

Awated Mussolini
The restoration of this biggest pagan temple of Rome, however, has had to wait for the word of Mussolini, who approved the plan for the work as soon as it was put before him.

It was only recently that Rome archeologists, headed by the director, Dr. Antonio Munoz, have been able to discover the precise location of the temple, the distance between each of the huge granite marble columns and their precise position. There are 64 large fragments of the original columns, most of them measuring from 42 to 16 feet in length, and about three and a half feet in diameter. It is calculated that these imposing fragments, when put together and joined with iron couplings and cement, will make about

48 columns of the same height as those of the original temple.

The Location
The temple of Venua and Rome stands on the southeastern corner of the Forum, almost opposite the Coliseum, and near the recently built Via dell'Impero or Empire Way. The temple was a kind of double one, since it was dedicated to the divinities of Rome and Venus, the latter being a special patroness of the Julian gens or family, that is, of the original family which started with Julius Caesar.

Besides putting the old columns in their former positions and tracing out the original lines of the temple, the shape of the building will be suggested rather than actually reconstructed.

At the same time, when this huge monument of marble and granite is raised once again opposite the Coliseum and the new roads opened, the effect will be striking.

GIRLS' LEAGUE FROLIC SLATED FRIDAY NIGHT MEDFORD HIGH SCHOOL

The annual Girls' league April Frolic is to be held Friday evening, April 20, at Medford high school. This is to be a costume party for only the girls, and three prizes will be awarded for the most clever costumes, one for the most comical, and one for the best looking couple.

The same decoration committee in charge of the decorations for the "Leap Year" dance last Friday, are in charge of decorations for tomorrow evening.

The Girls' league representatives, with Ethel Slagle as chairman, are arranging the program which will run from 8:15 to 9 o'clock, followed by dancing until 10:30. All parents are most cordially invited to attend.

The refreshment committee is as follows: Lois Frazee, chairman; Helen Judy, Gwen Krous, Doris Upp, Pearl Rawhauser, Frances Luman.

The clean-up committee will be: Alice Mae Shirley, chairman; Mildred Buckles, Barbara Holt, Gwen Krous, Hazel Moffet, Maxine Robinson, Evelyn Herman, Bonita Hammack.

NEW SLIT SKIRTS PROVE STARTLING TREND IN STYLES

PARIS.—(AP)—Slit skirts, slashed with the deepest cuts seen since the first slit skirt started the style world before the war, are here with the springtime mode.

Patou has launched, slim, sinuous evening frocks slit in front to a point sometimes above the knee or slashed up the back of a pronged train. The gowns, designed of white, sapphire blue, almond green and nasturtium orange crepe or satin are generally fashioned with high front and fairly low back décolletés which often widen to cover the shoulder.

Most of them are designed with a little coatee or cape which may be tossed easily over the shoulders "to keep women from shivering while they wait for their cars." Sometimes the coatee match; again, they contrast with the color of the frock. Sun-ray pleated yellow chiffon capes and shell pink moire coatees go with black frocks, while sapphire blue

gowns are accompanied by wraps of the same shade.

Daytime frocks put their slits above the waist, many of them being slashed in the back or front of the bodice and faced with a contrasting color. Most of them are designed of black crepe or black satin lightened with touches of pale green, shell pink or dead white. One black crepe trimmed with white neck touches is slit up the back of the waist to reveal a white crepe inset.

Summertime frocks to wear in town show many two-toned or tri-colored effects. Most of them are fashioned of dark crepes, microscopic prints or plaids, and are worn with a little cape or sleeveless jacket of the same fabric.

One smart silk of black, white and red shallow plaid is topped by a little waist-length cape, while a navy blue crepe worn with a sleeveless jacket of the same fabric has a big white butterfly jabot splashed with blue dots the size of a quarter.

Three colors blend in another striking costume. It is a simple black crepe summer suit with a black and white striped taffeta vest, touched with emerald green at the neckline and worn with an emerald green straw sailor tilted over one eye.

Again, as since 1852
IN A CLASS ALONE

LYONS BELVISTA WINES

California

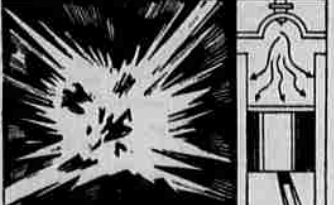
Score of wines march respectfully behind the authentic quality achieved by these gay wines of the Golden Age. Obtainable wherever discriminating wine palates attend. Lyons Cordials and Cocktails are also available.

THE E. G. LYONS & CO. SAN FRANCISCO LOS ANGELES NEW YORK

GILMORE roars again!

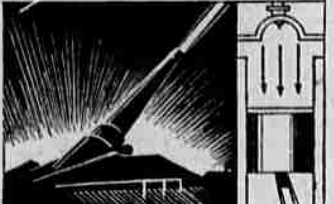
CONTROLLED POWER

UNCONTROLLED POWER

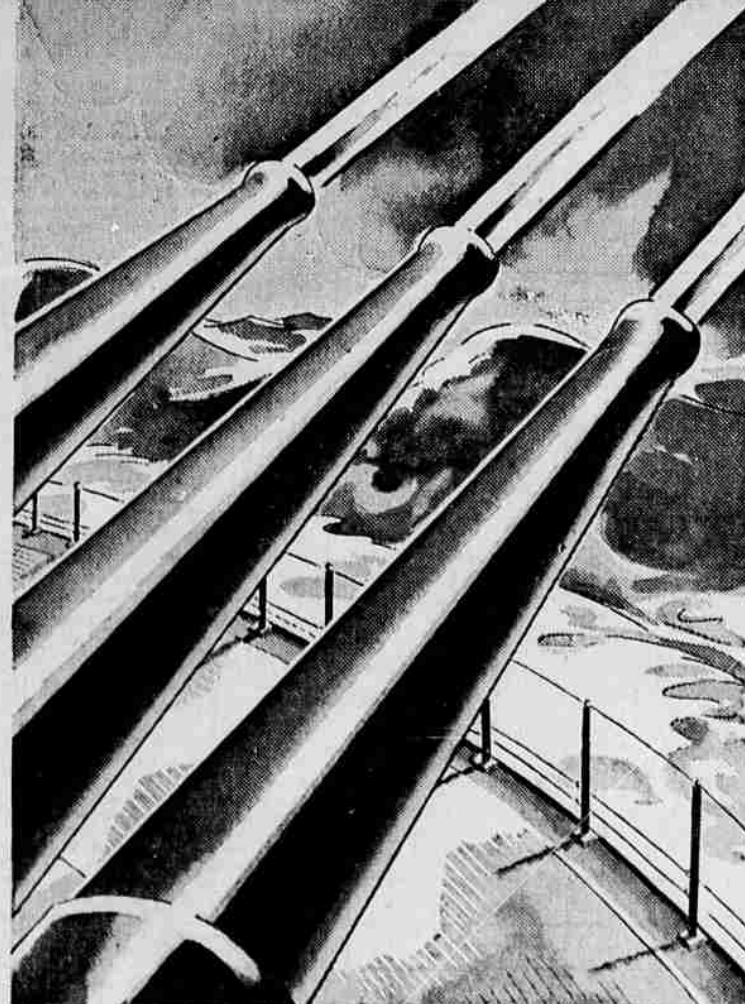


TNT is used for shattering effects because it exerts its terrific energy in every direction. Inferior gasolines, like TNT, when ignited, do not burn uniformly but throw a part of the uncontrolled energy against the cylinder walls and head... without giving the piston time to take advantage of the power.

CONTROLLED POWER



New Gilmore Red Lion Gasoline performs like modern, slow-burning, smokeless powder in a 14-inch naval gun. The new Controlled Power fuel... with its scientifically correct mixture of tetraethyl lead... ignites uniformly... concentrating the "push" against the piston head for the full stroke because the gas expands gradually.



A GASOLINE THAT ACTS LIKE SMOKELESS POWDER IN A 14-INCH NAVAL GUN.. TREMENDOUS ENERGY CONCENTRATED ON PISTON HEAD

Now ready for you... this sensational achievement of Gilmore, a Controlled Power gasoline that *actually* performs like highly developed smokeless powder in a 14-inch Naval gun. Smokeless powder is slow-burning... the gases expand uniformly, putting the tremendous driving force against the base of the projectile... sending it infallibly to a target 18 miles away.

Gilmore has masterfully applied this secret of Controlled Power to gasoline. The great energy of perfected motor fuel (many times that of powder) is concentrated on the piston head for the full length of the stroke!

This amazing gasoline is the superb attainment of years of research and development... and to it has been added just the scientifically cor-

rect proportion of tetraethyl lead. With Gilmore Red Lion, these microscopic flakes of tetraethyl lead work wonders! When ignited they burn evenly throughout the vapor... providing a sustained, concentrated, complete power "push."

Gilmore Controlled Power Gasoline absolutely eliminates pre-explosion and damaging motor knocks. There's no dissipation of energy against the cylinder walls. Only surging, Controlled Power singing in your motor.

Test this surprising Controlled Power today! With new "Fortified" Red Lion gasoline you'll skim through the traffic... zoom up the hills... glide over the highways! Yes, just try it and you'll roar with Gilmore!



GILMORE RED LION GASOLINE

Fortified + Tetraethyl