

TOONERVILLE FOLKS

by FONTAINE FOX



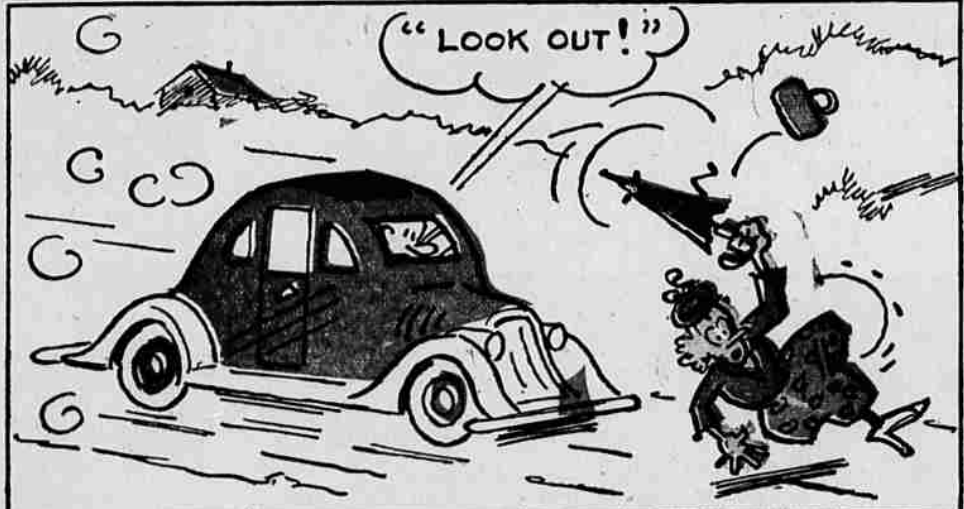
"A PAIR OF HEELS AS HIGH AS THOSE NOT ONLY LOOK RIDICULOUS BUT THEY'RE DANGEROUS!"



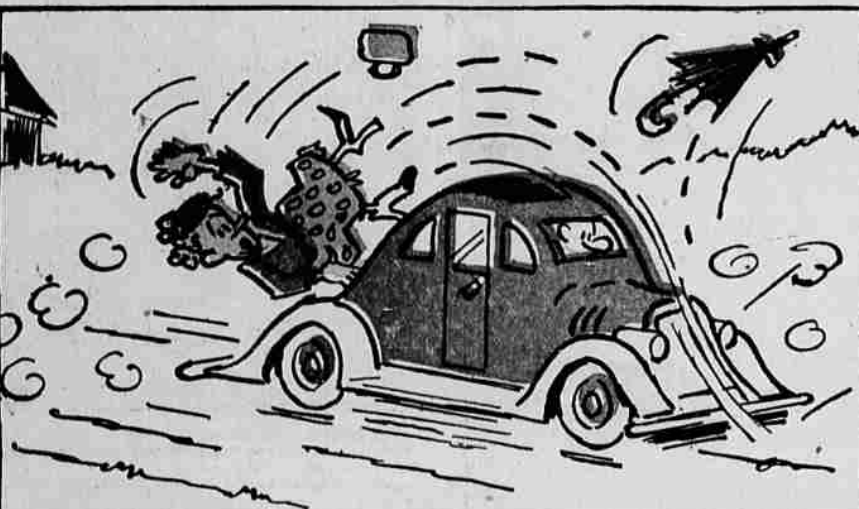
"YOU'RE LIABLE TO TURN YOUR ANKLE AND FALL RIGHT IN FRONT OF SOME AUTO!"



"JUST AS I SAID! SHE'S FALLEN RIGHT IN FRONT OF ED WORTLE'S NEW CAR!"



"LOOK OUT!"



"OH, DEAR!"



"YOU CAN BLAME EVERYTHING ON THESE HIGH HEELS SHE WAS WEARING!"



"YOU SAID IT!"



"THEY SCRATCHED UP THE BACK OF MY NEW CAR SOMPIN' AWFUL!"

LITTLE STANLEY



"I INTEND GIVING STANLEY SOME MEDICINE REGULARLY; IT'S A GOOD IDEA TO PEP CHILDREN UP A BIT IN THE SPRING."



"WOT ON EARTH POSSESSES HIM TO KEEP RUNNING ROUND AND 'ROUND LIKE THAT?"



"I CAN'T HELP IT, MOM! I'M JUST SO FULL O' PEP!"



WHOA!