

# FOREST SERVICE LISTS WORK DONE BY CCC YOUTHS

## \$236,446 Expended Up to April 1—Phone Line Construction, Fire Prevention, Road Building Feature

The latter company also developed 10 springs and wells for stock. There are now 23 more bridges within the national forest than before the Civilian Conservation Corps came here a year ago. Elk Creek built four of them, Evans Creek five, Carberry four, Lake o' the Woods six, and Moon Prairie four. Applegate and Lake o' the Woods camps each built a corral, also.

Tables for public camp grounds, 25 of them, were built by Lake o' the Woods company. Besides the great outlay of construction, which was accomplished by the men, there was a great deal of maintenance work carried on, especially for telephone lines, roads and trails.

Figures on the report show there were 304 miles of telephone lines maintained in the Rogue River forest by the CCC camps, divided among the companies as follows: Elk Creek, 66; Evans Creek, 9; Applegate, 76.5; South Fork, 12; Lake o' the Woods, 42; Upper Rogue 90 and Moon Prairie, 8.

Applegate camp maintained a look-out house, while Carberry and Elk Creek each maintained a dwelling at a temporary station.

Each of the camps did a great deal of maintenance work on roads and trails. Listed by miles, Elk Creek kept up three, Evans Creek 11.7, Applegate 96.3, South Fork 24, Carberry 11.6, Lake o' the Woods 73, Upper Rogue 58, and Moon Prairie 52.

Elk Creek maintained 84.5 miles of horse trails, Evans Creek 4.5, Applegate 106.3, Carberry 24.5, Lake o' the Woods 235, Upper Rogue 279.9 and Moon Prairie 43.

Camp at Upper Rogue maintained 33 acres of public camp ground, and 14 latrines. The same company did maintenance work on five waste disposals in public camp grounds, also six foot-bridges.

South Fork maintained 14 feet of pipeline and for the purpose of public camp grounds, Applegate did maintenance work on structure and Carberry on two.

In the summer period, Upper Rogue built 11 miles of telephone, Lake o' the Woods 12 miles and Moon Prairie camp 31 miles. A half mile firebreak was cleared by the Lake o' the Woods camp during the summer.

In the following summaries, as listed by the forestry reports, references to the Elk creek camp and Applegate camp will indicate work accomplished over the period of the past year, while the listings of Evans Creek and Carberry camp will refer to winter periods only. Work at Lake o' the Woods camp, Upper Rogue River camp and Moon Prairie camp was carried out during the summer period.

Of the 608 acres on which fire hazards were reduced, 40 were cleared by Elk Creek, 12 by Applegate, 125 by South Fork, 198.4 by Carberry, 105 by Lake o' the Woods, and 130 by Upper Rogue.

Much roadside clearing and fire prevention work was done by the men, 206 miles being put into condition. Elk creek took care of 35 miles, Evans Creek 4, Applegate 36, South Fork 15, Carberry 10.8, Lake o' the Woods 26, Upper Rogue 5 and Moon Prairie 7.5.

One lookout house was built by the Elk Creek company, four by the Applegate men and three by the Moon Prairie camp, making a total of eight. Elk Creek also erected a look-out tower and Upper Rogue camp put up two.

There were 2456 man days of fighting fires in the Rogue River national forest, with 549.3 days credited to Applegate camp, 1049 to Lake o' the Woods, 300 to Upper Rogue and 558 to Moon Prairie. Seven hundred four man days were put in for fire suppression, giving Elk creek 39.5 days, Applegate 282 days, Carberry 102 days, Lake o' the Woods 54, Upper Rogue 78.5 and Moon Prairie 168.

South Fork camp put in three man days on general clean-up other than prevention of fire.

Road and trail construction totaled 211 miles, with the work divided among the camps as follows: Elk Creek, 28 miles; Evans Creek, 6.8 miles; Applegate, 34.3 miles; South Fork, 9.5 miles; Carberry, 15 miles; Lake o' the Woods, 20 miles; Upper Rogue, 54 miles and Moon Prairie, 43.5 miles. Horse trails were also cut out by the company men, totaling 38 miles. Of this, 7.5 miles were put in by Elk Creek, 16.6 by Evans Creek, a mile and a half by Carberry, 3.5 by Lake o' the Woods and 8.5 by Upper Rogue.

Applegate camp and Lake o' the Woods camp each built two dwellings at permanent stations, while Upper Rogue constructed one dwelling. Eight dwellings at temporary stations were built during the past year, three at Elk creek, two at Applegate, two at Moon Prairie, and one at each of the following: Carberry, Lake o' the Woods and Upper Rogue.

Ten toolhouses and boxes were built at Carberry, while Applegate constructed two. Each of the following camps put in one: Elk Creek, Evans Creek, Lake o' the Woods, Upper Rogue and Moon Prairie.

Barns were built at permanent stations by the Applegate and Lake o' the Woods men, while at the temporary stations there were built by Elk Creek, two by Applegate, two by Carberry and one at Lake o' the Woods. Applegate and Lake o' the Woods camps each constructed an office.

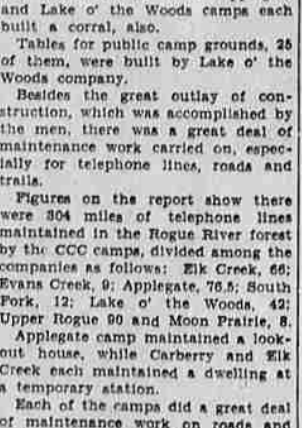
For public welfare, considerable work was done by the CCC camp men, for 88 acres of public campground was cleared within the forest, 10 acres at Applegate, three at South Fork, 65 at Lake o' the Woods and 10 at Upper Rogue. Lake o' the Woods put up 33 public campground latrines, and Upper Rogue 20.

A public water system was constructed at Lake o' the Woods, and camp ground waste disposals were put in, with two at South Fork, 16 at Carberry, 29 at Lake o' the Woods, and 49 at Upper Rogue.

Many other facilities at the camp grounds were constructed by the CCC men, totaling 145. Seventy-five were completed by Elk Creek, two by South Fork and 68 by Carberry. Each camp in the forest also built several other structures, 7 at Elk Creek, five at Evans Creek, five at Applegate, four at South Fork, six at Carberry, two at Lake o' the Woods, seven at Upper Rogue and 5 at Moon Prairie.

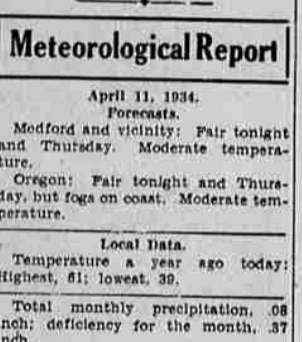
Duties of the men in the camps were not confined to one particular form of construction, but took in various lines of necessary work, which will prove permanently beneficial to the forestry service. Elk Creek laid 3200 feet of pipe lines, while Applegate constructed two water storage units. Wells and waterholes were cared for by the men, one at Carberry, two at Lake o' the Woods, two at Upper Rogue and one at Moon Prairie.

# TWO SHOT AS MRS. PINCHOT ADDRESSES MINERS



Two men were shot and several others were injured when a mob rioted near the platform from which Mrs. Cornelia Bryce Pinchot, wife of the governor of Pennsylvania, was addressing a crowd of 25,000 miners at Uniontown, Pa. At the right Mrs. Pinchot is shown greeting miners and miners' wives at the celebration. At the left police are hurrying away from the crowd with John Gera after they said they found a pistol in his pocket. The celebration was held in honor of the anniversary of the eight-hour day. (Associated Press Photos)

# 'BET ON ANYTHING,' COL. BRADLEY TELLS SENATORS



Col. E. R. Bradley (left), veteran Kentucky sportsman, is shown before a senate committee in Washington when he told Senator Huey P. Long (right) that he "bet on anything." Long said he intended to show that Bradley and Col. John P. Sullivan of New Orleans "own their own betting kiddy." Bradley said he did not know D. D. Moore, whose appointment as collector of internal revenue at New Orleans precipitated the furor. (Associated Press Photos)

# LOCAL GUERNSEYS BRING TOP PRICE

What is said to be the highest price recently paid for dairy cows was received for a car of fancy Guernseys shipped from Medford this week to C. W. Moore of Irvington, Cal.

# CAMERA CLUB TO MEET TOMORROW

Medford Camera club will hold regular monthly meeting tomorrow night in the courthouse auditorium. Motion pictures taken by John W. Johnson and Scott V. Davis on their trip

# FORMER JUDGE SUICIDES BECAUSE OF ILL HEALTH

WENATCHEE, Wash., April 11.—(AP) William A. Grimshaw, former superior court judge, shot himself to death in his home at around 7 a. m. today. It was believed he ended his life because of ill health. He was a veteran of the Spanish-American war.

# HOOPER OF MEDFORD, PASSED ON BY PATRICK O'DONOVAN, THE WELL-KNOWN HERDAMAN OF IRVINGTON, WHO ACCOMPANIED MR. MOORE TO THE VALLEY AND INSPECTED BY DR. G. A. GITZEN OF MEDFORD.

Mr. Moore supplies milk to a very high-class trade in Oakland, Cal., which is served by the Robert Shuey Dairy company of that city.

# HOOPER OF MEDFORD, PASSED ON BY PATRICK O'DONOVAN, THE WELL-KNOWN HERDAMAN OF IRVINGTON, WHO ACCOMPANIED MR. MOORE TO THE VALLEY AND INSPECTED BY DR. G. A. GITZEN OF MEDFORD.

Mr. Moore supplies milk to a very high-class trade in Oakland, Cal., which is served by the Robert Shuey Dairy company of that city.

# HOOPER OF MEDFORD, PASSED ON BY PATRICK O'DONOVAN, THE WELL-KNOWN HERDAMAN OF IRVINGTON, WHO ACCOMPANIED MR. MOORE TO THE VALLEY AND INSPECTED BY DR. G. A. GITZEN OF MEDFORD.

Mr. Moore supplies milk to a very high-class trade in Oakland, Cal., which is served by the Robert Shuey Dairy company of that city.

# HOOPER OF MEDFORD, PASSED ON BY PATRICK O'DONOVAN, THE WELL-KNOWN HERDAMAN OF IRVINGTON, WHO ACCOMPANIED MR. MOORE TO THE VALLEY AND INSPECTED BY DR. G. A. GITZEN OF MEDFORD.

Mr. Moore supplies milk to a very high-class trade in Oakland, Cal., which is served by the Robert Shuey Dairy company of that city.

# HOOPER OF MEDFORD, PASSED ON BY PATRICK O'DONOVAN, THE WELL-KNOWN HERDAMAN OF IRVINGTON, WHO ACCOMPANIED MR. MOORE TO THE VALLEY AND INSPECTED BY DR. G. A. GITZEN OF MEDFORD.

Mr. Moore supplies milk to a very high-class trade in Oakland, Cal., which is served by the Robert Shuey Dairy company of that city.

# HOOPER OF MEDFORD, PASSED ON BY PATRICK O'DONOVAN, THE WELL-KNOWN HERDAMAN OF IRVINGTON, WHO ACCOMPANIED MR. MOORE TO THE VALLEY AND INSPECTED BY DR. G. A. GITZEN OF MEDFORD.

Mr. Moore supplies milk to a very high-class trade in Oakland, Cal., which is served by the Robert Shuey Dairy company of that city.

# VANDERBILT LISTS FOES AND FRIENDS ADMINISTRATION

Ogden Mills Called Generalissimo of Coming Attack On Roosevelt — Alice Longworth Also Enemy

BUFFALO, N. Y., April 11.—(AP)—Cornelius Vanderbilt, Jr., in an address today listed the ten "principal enemies" of the Roosevelt administration and "new order" and the ten men he considered best qualified as its champions.

The "enemies": Ogden Mills, former secretary of the treasury, "the real generalissimo of the coming attack on the administration"; John W. Davis, Democratic presidential candidate in 1924, "capable lawyer, dangerous enemy"; James M. Beck, former solicitor general of the United States, "cleverest of Wall street magicians"; John F. Curry, leader of Tammany Hall; Thomas W. Lamont of J. P. Morgan & company, "more than any other living being responsible for our participation in the world war"; Senator David A. Reed of Pennsylvania, "demagogue first and last"; Senator Simon D. Pess of Ohio, "who combines the worst features of Beck and Reed"; Alice Roosevelt Longworth, daughter of former President Roosevelt, "queen of the gossip bee hive, spends her days and nights spreading silly rumors"; Harrison Williams, of the North American Investment Trust, who "symbolizes the arrogance of the public utility companies"; Richard B. Whitney, president of the New York Stock Exchange, "who flooded Washington and the country with ruthless propaganda";

The champions: Harold I. Icken, secretary of interior; Homer S. Cummings, attorney-general of the United States; Henry Morgenthau, Jr., secretary of the

# BRIGHT SPOTS

(By United Press.) General Motors corporation reports March sales to dealers were 119,858 cars against 82,222 in February and 45,098 in March, 1933.

International Silver company increases wages of all employees receiving less than \$200 monthly by 10 per cent.

McGraw Electric company earns 1933 net profit of \$105,550, against 1932 net loss of \$269,124.

Tidewater Associated Oil company earns 1933 net profit of \$7,265,301, against \$4,718,693 in 1932.

Adams-Willis corporation declares dividend of 80 cents a share on common stock, compared with previous quarterly payments of 25 cents a share.

Mid-Continent Petroleum corporation reports net profit for last half of 1933 of \$937,028, against net loss of \$2,703,466 in like 1932 period.

# DIES BILL APPROVED IN SENATE COMMITTEE

WASHINGTON, April 11.—(AP) The senate agriculture committee today reported favorably the Dies farm relief bill carrying the Thomas amendment for nationalization of the white metal.

Notice is hereby given that there are funds on hand for the redemption of warrants drawn on School Dist. No. 16 as follows: No. 46, 47, 48, 50, 51, 53, 54, 55, 56, 58, 59, 60 and 62. Interest ceases on April 7th, 1934. Warrants payable at First National Bank, Medford, Ore.

A. AUGUST WALRUFF, Clerk. School Dist. No. 16.

All kinds of eggs, blanks for sale for rent, no hunting no trespassing and other cards for sale at Commercial Printing Dept. of Mail Tribune.

For Garden Plowing Tel. 912-J.

# \$44,971 EARNED BY RUM CONTROL

SALEM, April 11.—(AP)—A total of \$44,971.33 will be turned over to unemployment relief by the state liquor control committee from fees obtained from wine and beer licenses for the first quarter of the year, the liquor commission announced today.

The money will be turned over by the state treasurer to the state unemployment relief committee who in turn will apportion it to the counties according to population.

The total received by the state, which was from sale of licenses only, was \$53,118.75. Of the difference between this total and the amount going to unemployment relief, \$1,983.24 went for salaries, \$2,133.44 for general administrative expenses, \$3,680.74 capital outlay and \$350 for refunds.

SALEM, Ore., April 11.—(AP) Governor Julius L. Meier today granted a pardon to Merle Bogie, 19, sentenced March 30 to serve 30 days in the Linn county jail for reckless driving. He was to go to work tomorrow in the CCC camp.

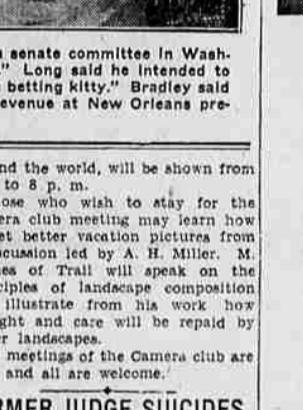
3 Midget Photos 10c Peasey Studio.

# SPEND FOR THE HOME IN 1934

Big Pines Lumber Co. Medford

Phone 1

# "NERVES" NO PROBLEM WITH ME!



I'VE HEARD THAT CAMELS USE FINER TOBACCOS, AND IT IS CERTAINLY TRUE THAT SINCE I STARTED SMOKING CAMELS I DON'T FEEL NERVOUS AND IRRITABLE ANY MORE.

# CAMEL'S COSTLIER TOBACCOS

YOU CAN SMOKE THEM STEADILY... BECAUSE THEY NEVER GET ON YOUR NERVES... NEVER TIRE YOUR TASTE!

# Pear Markets

NEW YORK, April 10.—(AP)—(U. S. D. A.)—Pear auction market: 7 cars arrived; 2 Oregon, 1 Washington unloaded; 7 cars on track; by boat, 17 cars from California.

Oregon Danjou: 720 boxes fancy, \$2.45 @ 3.75, average \$3.00.

Oregon Nellis: 355 boxes extra fancy, \$2.70 @ 3.05, average \$2.77; 365 boxes fancy, \$2.70 @ 2.85, average \$2.77.

Washington Danjou: 720 boxes extra fancy, \$3.10 @ 3.28, average \$3.15.

Be correctly cased in an Artist Model by Ethelwyn B. Hoffmann.

WINDOW GLASS—We sell window glass and will replace your broken windows reasonably. Trowbridge Cabinet Works.

# Announcing the opening of the Medford School OF Beauty Culture at 419 1/2 East Main PHONE 84 ENROLL NOW

For first class starting. You can make arrangements for time payment for course. We are ready to serve the public and give the best of all beauty culture operations. Appointments preferred but not necessary. Just drop in any time. We have plenty of ladies to serve you.

# HISTORY REPEATS ITSELF

AGAIN CHRYSLER Revolutionizes the Motor Car



# ON THE TENTH ANNIVERSARY

of the first car to bear his name, Walter P. Chrysler proudly presents to the world the new Airflow Chrysler.

In one master stroke of engineering it brings to the motor car the spacious comfort of a drawing room... a brilliant new functional beauty... a new conception of strength and safety... and a silent floating ease of motion that surpasses any known form of travel on land or sea or air.

There is an entirely new system of weight distribution. The engine is over the front axle. The rear seat is 20 inches forward of the rear axle. The passengers ride at the center of balance... cradled between the two axles.

A whole new world of motor-ing opens up to you in the new Airflow Chrysler. It is entirely different and advanced in everything it is and does. When you see it and ride in it you will know for yourself that it brings a wholly new kind of transportation.

# Four Distinctive 1934 MODELS

CHRYSLER AIRFLOW EIGHT... 122 horsepower and 123-inch wheelbase. Six-passenger Sedan, Brougham and Town Sedan, five-passenger Coupe. All body types, \$1345.

CHRYSLER AIRFLOW IMPERIAL... 130 horsepower... 128-inch wheelbase... Six-passenger Sedan and Town Sedan, five-passenger Coupe. All body types, \$1625.

AIRFLOW CUSTOM IMPERIAL... 146-inch wheelbase... 150-horsepower... magnificently-styled, individualized body types.

1931 CHRYSLER SIX... With independently sprung front wheels... to give a levelized cushioned ride over any sort of road... smoother, safer, steadier. 88 horsepower, 5 body types on 117-inch wheelbase. 2 types on 121-inch wheelbase. Priced from \$775 up. 4-door Sedan, \$845.

All 1934 Chrysler models have patented Floating Power engine mountings... safety all-steel bodies... hydraulic brakes... all-steel transmissions... shock absorbers... free wheeling. Automatic clutch available.

THE NEW AIRFLOW CHRYSLER EIGHTS AND 1934 CHRYSLER SIX ARE NOW ON DISPLAY \* CHRYSLER AND PLYMOUTH CARS SOLD BY 38 North Riverside Ave. ARMSTRONG MOTORS, INC. Phone 18