

COUNTY OFFICIALS GIVE LEGISLATION HINTS AT CONFAB

State Aid for School Financing — Tax Delinquency Rate Increase — Liquor Control is Suggested

Legislation of high interest to Jackson county, was recommended to the special session of the legislature, in the Portland convention of county judges, commissioners, and county clerks, according to Commissioners Ralph S. Billings and R. E. Nelson who returned this morning.

The foremost changes and action recommended were:

State aid to pull the public school system out of the financial straits.

Increase of the delinquency rate on taxes, interest, reduction of bonds and bonus for prompt and early payment.

Construction of the liquor control law, so that 75 per cent of the receipts go to the county, and 25 per cent to the state.

Pension Law Changes Need Revamping of the Old Age Pension law, increasing the length of residence and exemptions, and delaying enforcement until counties are financially better able to comply.

Return of the cost of the care on non-violent insane patients to the state, instead of the counties, as now.

The county clerks recommended the repeal of the so-called "gin marriage law."

County Judge Earl E. Day returned in Portland to attend a meeting of the state highway commission to consider ways and means for the distribution of the federal-state highway and road funds. The object of this fund is to remove as many as possible from the charity rolls.

County officials figured that increase of the delinquency rate would spur tax payments, among those who can but won't, and who think that the rate will be decreased or abolished.

Liquor Control Plan The Jackson county suggestion that persons convicted of a violation of the prohibition laws be barred from liquor selling will be embodied in the liquor control measure.

Return of the care of the non-violent insane to the state, would relieve Jackson county of a large expense item. The transfer of the cost to the county was expected to place the main burden on kin. This has not been the case, few being able or willing to assume it.

Repeal of the "gin marriage law" would also help. It has resulted in many California couples getting their wedding license at home. Before the law went into effect there was a fairly steady stream of licensees from the south, coming here for licenses. The past year there has been a steady decline in out of state victims of Cupid. The records of the clerk's office show the decline. In most cases the wedding ring, breakfast, dresses, and hats were purchased here, and local preachers tied the knots at the regular rate. Jackson county was formerly by a Mecca for California swains and ladies.

The Old Age Pension law changes are urged, so that it can be observed. Jackson county, with a heavy drain on its coin, due to the county commissary and the Banks-Pelham law, has been unable to meet the law. It was estimated that the Old Age pensions would cost Jackson county \$130,000 per year.

LOCALS

VonKessler Improved — Harry Von Kessler of Ross lane, a patient at the Sacred Heart hospital since last August, has returned to his home, having completely recovered from the major operation undergone. His condition was described today as "fine."

Mrs. Moty Recovered — Mrs. K. N. Moty of West Tenth street left the Sacred Heart hospital today, having recovered from an operation undergone 10 days ago.

Mrs. Porter Goes Home — Mrs. C. H. Porter of 201 McAndrews road has returned to her home from the Sacred Heart hospital, where she underwent a major operation two weeks ago.

ART JACOBS SOLD TO ATLANTA CRACKERS

GALVESTON, Tex., Nov. 15.—(AP) Spencer Abbott, former Portland manager who will pilot the Atlanta team of the Southern association next year, announced today that the Crackers had purchased Art Jacobs, 27 year old left hander, from Portland.

IS EPILEPSY INHERITED? CAN IT BE CURED?

A booklet containing the opinions of famous doctors on this interesting subject will be sent FREE, while they last, to any reader writing to the Educational Division, Dept. 890, 345 Fifth Avenue, New York, N. Y.

We Can Save You Money on MULTINOMAH BATTERIES and MEDFORD MADE BATTERIES

Complete Electrical Service Rebuilding, Repairing Starters and Generators—Lighting and Ignition Work.

24 Hours Rewinding Service

SEVERIN Battery Service

1312 N. Riverside, Phone 390

Plated or Big Hough BLOCKS

At Summer Prices Medford Fuel Co.

1172 N. Central, Tel. 631

Markets

Livestock. PORTLAND, Nov. 15.—(AP)—Cattle 125; calves 10; about steady, unchanged. HOGS 300; active, steady, unchanged. SHEEP 100; steady, unchanged.

Portland Produce

PORTLAND, Nov. 15.—(AP)—Butter Prints, extra, 24c; standard, 23c. B. BUTTERPAT—Portland delivery: A grade, 21c; farmer's door delivery, 19c per lb.; sweet cream, 5c higher. EGGS—Pacific Poultry Producers' selling price: Fresh extra special, 31c; extra, 29c; standard, 24c; medium, 23c; pullets, 18c. Buying price by wholesalers: Fresh extra, 30c; first, 22c; medium, 20c; undergrade, 14c; pullets, 14c. POTATOES—Local white and red, \$1.25-\$1.80; central, Yakima, \$1.55-\$1.40; Deschutes, \$1.40-\$1.50. Cheese, milk, country meats, mohair, cascara bark, hops, live poultry, onions, wool and hay, unchanged.

Portland Wheat

PORTLAND, Nov. 15.—(AP)—Wheat: Open High Low Close Dec. 78 78 77 77 74 May 73 73 72 72 72 Cash: Big Bend bluestem .73 Dark hard winter, 12 pct. .73 11 pct. .73 Soft white .71 Western white .71 Hard winter .71 Northern spring .71 Western red .71 Oats: No. 2 white, \$22.25. Corn: No. 2 yellow \$23.05. Millrun, standard, \$14. Today's car receipts: Wheat, 52; flour, 12; corn, 2; hay, 8.

Chicago Wheat

CHICAGO, Nov. 15.—(AP)—Wheat: Open High Low Close Dec. 90 91 89 89 89 1/2 May 94 94 92 92 92 1/2 July 92 92 90 90 90 1/2 Silver: NEW YORK, Nov. 15.—(AP)—Bar silver barely steady 1/4 lower at 44 1/2.

San Francisco Butterfat

SAN FRANCISCO, Nov. 15.—(AP)—fat, 22 1/2 @ 24c.

Wall St. Report

Stock Market Averages. (Copyright, 1933, Standard Statistics Co.) November 15: 50 20 30 90 Today 87.5 38.9 65.8 76.1 Prev. day 88.2 39.8 66.9 77.0 Week ago 87.9 41.4 71.8 77.8

Year ago — 87.5 39.1 61.3 76.2 3 yrs ago — 122.9 103.4 173.2 133.4 Bond Sale Average. (Copyright, 1933, Standard Statistics Co.) November 15: 20 20 20 80 Today 70.2 87.4 77.0 71.8 Prev. day 70.3 88.1 77.7 72.1 Week ago 71.3 70.6 78.7 73.3 Year ago — 65.4 64.1 82.3 69.9 3 yrs ago — 90.4 103.2 99.6 98.4

MORGENTHAU TO HANDLE AFFAIRS DURING ABSENCE

(Continued from page one)

his duties, the president suggested that he take a "complete leave of absence" and "do all you can to get full health and strength, without any responsibility or thought of work."

Morgenthau has been at the head of the farm credit administration.

Recently he was given a prominent part in working out administration monetary policies and placed upon the committee which daily fixes the price at which the reconstruction corporation makes purchases of newly mined domestic gold.

Acheson came to the treasury from the legal profession.

Acheson Carries Burden During Woodin's absence he has carried almost the entire burden of directing the treasury.

Mr. Roosevelt today expressed great satisfaction with the services he has rendered and spoke his regret that Acheson was leaving the government.

Woodin told newspapermen he would leave for Arizona within a week or ten days, where he hoped to effect a permanent cure for his ailing throat.

"My personal affairs here will be wound up in a few days," he said, "after which I will go to New York to wind up my affairs there. Then I shall go to Arizona where the climate is particularly suitable to my condition."

He appeared in jubilant spirits.

No official explanation of Undersecretary Acheson's resignation was made. However, it appeared that he left to make room for Morgenthau.

U. S. Steel 41

GANG MURDER IN HANDS OF JURORS

ST. HELENS, Ore., Nov. 15.—(AP)—The jury which will determine the guilt or innocence of Jake Silverman, Portland rooming house proprietor on trial for a "gang" murder, today took the case for deliberation.

Silverman was charged with first degree murder for the slaying of Jimmy Walker ex-convict, whose bullet-riddled body was found beside that of Mrs. Edyth McClain on a lonely road near here last spring. The two had been beaten and shot to death, and their bodies thrown from an automobile.

SALEM, Nov. 15.—(AP)—A direct state appropriation to construct transmission lines from the Bonneville dam to distribution centers will be urged at the special legislative session, Morton Tumpkins, member of the Oregon executive committee, declared here yesterday.

BIDS ON HIGHWAY PROJECTS OPENED BY COMMISSION

(Continued from page one)

be awarded by the commission, that of the Winston bridge over the South Umpqua river on the Pacific highway, seven miles south of Roseburg. Their bid was for \$98,254.

Headed by E. W. Miller, manager of the Coast Highway association, the first delegation to be heard asked that J. M. Devera, attorney for the state highway commission, be sent to Washington, D. C., to assist in securing the projects out of the public works fund for Oregon. The commission took the request under advisement. Other features of their program included calling all unsurfaced sections of the coast highway and endorsement of the two routes from Portland to the sea.

Work of the consultant later on will be to assist cities in solving such problems as collection of taxes, tax delinquencies, allocation of budgets and others. He will work in close cooperation with the municipal research bureau of the university and with the office of the executive secretary of the League of Oregon Cities.

Memphis, Tenn., firemen these times are betting better. They are going to resume the annual firemen's ball, abandoned in 1931 of the depression.

Discover Ancient Location Notice Blazed In Tree

SALEM, Nov. 15.—(AP)—A replica of pioneer days when trails were "blazed" on trees and the principal landmarks were nature's handiwork, was received at the state forest office here yesterday. It was a piece of wood cut from a tree in the mining district of Josephine county. Carved with a knife in the wood were the words: "Notice is hereby given that we stake this claim for mining. From the tree up and then down for a distance of 200 yards." Beneath the inscription were the names Dan Boon, H. Teitel and George Fox. The inscription was under date of March 14, 1853.

Low bids on others of the 14 projects to be awarded later today included:

Rice hill section of the Pacific highway in Douglas county, one mile grading—A. T. Dolan, Tillamook, \$57,495.

Bridge over Williamson river on Clatsop secondary highway at Clifton in Klamath county—Hillstrom Bros., Marshfield, \$13,195.

EXPERT TO AID WORK OF CITIES IN OREGON ON LOAN APPLICATION

(Continued from page one)

University of Oregon bureau of municipal research and executive secretary of the League of Oregon Cities. Funds to provide for this work have been obtained from the Rockefeller foundation, and the expert will be sponsored by the American Municipal association.

The consultant will devote the first two months in aiding Oregon and Washington cities in making applications for loans from the national Public Works administration. He will assist cities in making out their formal applications, preparing final plans and working out other details necessary to obtain a portion of the federal funds.

Work of the consultant later on will be to assist cities in solving such problems as collection of taxes, tax delinquencies, allocation of budgets and others. He will work in close cooperation with the municipal research bureau of the university and with the office of the executive secretary of the League of Oregon Cities.

Memphis, Tenn., firemen these times are betting better. They are going to resume the annual firemen's ball, abandoned in 1931 of the depression.

FRIENDS THROUGH TO HONOR RANKIN ON RETIREMENT

(Continued from page one)

"All my efforts in this valley have met with assistance," Mr. Rankin declared, "and all that I ask is that you give my successor, Earl Janouch, that same whole-hearted co-operation. He is fully capable of carrying on."

Mr. Janouch was then called upon and told his story of Mr. Rankin in figures, which show what the forest service here under Mr. Rankin's guidance has contributed to the county government.

"Mr. Rankin always insisted upon giving the greatest benefits to the county government," Mr. Janouch stated. "During his service the 25 per cent contribution to counties amounted to \$48,787. For the year 1933 the sum of \$143,748 has been spent to date in the forest. Of this amount \$22,324 was spent for labor."

By way of aiding county relief some 692 men were furnished employment through the forests this year. They were largely selected from the county relief rolls or the federal employment agency.

Entering his new position, Mr. Janouch stated he had gained confidence from the realization that "one never leaves the forest service" and Mr. Rankin's history with the forest whenever his services were needed.

Among guests from other forests introduced at the luncheon were: G. E. Mitchell, supervisor of the Siskiyou national forest, with headquarters in Grants Pass; V. V. Harpham, supervisor of the Umpqua, and Fred Douthett, supervisor of the Klamath.

Judge Wm. G. Steele, "Father of Crater Lake," was also introduced, and H. E. Armstrong, retired forester, now residing in Medford; Bush Osburn, from the regional office, and C. C. Hall, retired supervisor of the Mt. Hood forest. Capt. G. H. Barnwell, Capt. Stove and Capt. H. F. Dark of the civilian conservation corp.

HENRY J. MILLER OF ROGUE RIVER PASSES

Funeral services for Henry J. Miller of Rogue River, who died at his home

NOTICE Poultry Dealers and Buyers RAILWAY EXPRESS AGENCY

Announces REDUCTION IN RATES ON DRESSED POULTRY From MEDFORD, OREGON To CALIFORNIA, OREGON AND WASHINGTON POINTS

EXAMPLES OF RATE REDUCTIONS

To San Francisco, Oakland and Bay Area. Lots of 500 pounds and over .75c per cwt. " " less than 500 pounds .90c per cwt. Overnight service to San Francisco, Oakland and other Bay Cities To Los Angeles and contiguous territory .81.75 per cwt. Lots of 500 pounds and over .81.75 per cwt. " " less than 500 pounds 1.00 per cwt. To Seattle and Tacoma Lots of 300 pounds and over .81.25 per cwt. To Portland Any quantity .75 per cwt. Rates include pick-up and delivery service within specified limits. (Rates and Charges Subject to Change Without Notice) Insure your poultry reaching destination in good order by using

RAILWAY EXPRESS AGENCY, INC.

Serving the Nation For 94 Years NATION-WIDE SERVICE

FIRST TIME TWIN IGNITION in a Low-Priced Car

1934 Nash Big Six Brougham, \$795, f. o. b. Kenosha, Wis.

1934 NASH

EVERYBODY expected Nash to do something brilliant in designing the 1934 Nash—and sure enough, the new Nash "Speedstream" style simply sparkles with grace, smartness and good taste.

And everybody expected Nash to step out and go the limit in making its 1934 models crowning examples of motoring luxury.

But who would have thought it possible for Nash or any manufacturer to go so far as to power the lowest-priced models of a new line like the higher-priced models, with Twin Ignition valve-in-head motors?

That's exactly what Nash has done—in spite of rising manufacturing costs—in spite of the greater cost of building a Twin Ignition valve-in-head motor—and in spite of the fact that Twin

Ignition never before has been engineered into a car selling under \$1,200!

There's almost a magic difference between a motor car with Twin Ignition and one without it. You can feel the difference in smoothness—and tests reveal the big difference of 22% more power, 5 more miles an hour top speed and 2 more miles to a gallon of gasoline!

Nash for 1934 has just about everything—including a new improved type of built-in draftless ventilation, providing unobstructed vision—a new synchro-shift transmission with all gears quiet at all speeds—and a new coincidental starter—everything to give Nash the edge in any comparison. See Nash before you say "Yes" in deciding on any new car.

BIG SIX SERIES, 216" wheelbase, 88 H. P. \$745 to \$795

ADVANCED EIGHT SERIES, 221" wheelbase, 100 H. P. \$1035 to \$1085

AMBASSADOR EIGHT SERIES, 233" wheelbase, 125 H. P. \$1375 to \$1625

AMBASSADOR EIGHT SERIES, 242" wheelbase, 125 H. P. \$1820 to \$2055

(All prices f. o. b. Kenosha, Wis.—Special Equipment Extra)

WALTER W. ABBEY, INC.

123 South Riverside. Phone 303

It Actually Costs Less To Heat With a MONTAG CIRCULATOR

JUST ask the owner of a MONTAG circulator . . . you will be convinced that it is REAL ECONOMY to have one of these famous circulators solve YOUR heating problem . . . With surprisingly little fuel, your home will be evenly and effectively heated . . . the floors, too, will be warm, a feature of outstanding importance when children are in the family.

Montag Ranges

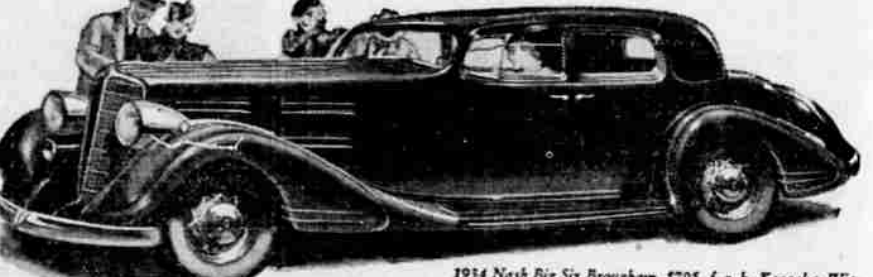
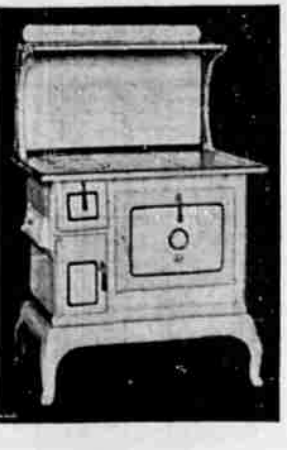
. . . the very last word in beauty, convenience and economy for the kitchen. The Montag range will add to the appearance of the finest kitchen and offer the very peak of "cooking pleasure" for the housewife . . . Be sure to see our MONTAG range line.

Choose

The very name "MONTAG" on your stove or circulator is proof of QUALITY . . . It means that YOUR COMPLETE SATISFACTION is absolutely assured . . . Here you have an opportunity to make your selection from SOUTHERN OREGON'S LARGEST STOCK of stoves, ranges and circulators . . .

JOHN CUPP FURNITURE STORE

Corner 6th and Bartlett. Phone 505



1934 Nash Big Six Brougham, \$795, f. o. b. Kenosha, Wis.