

CHEST DRIVE AND JUBILEE LEADERS ADDRESS KIWANIS

The Community Chest drive and Oregon's Diamond Jubilee celebration interested the Kiwanis club at luncheon today at the Hotel Medford.

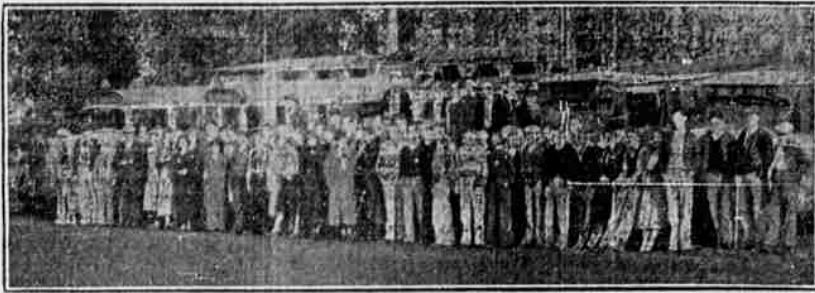
Mr. Hull described the drive as it is to be carried out, beginning November 7, stating that it was in keeping with President Roosevelt's plan for mobilization for human needs.

Urging each and every man in Jackson county to aid in plans for Oregon's big birthday party to be held here, Mr. Jerome stated that the celebration would continue for one week, beginning June 3, and bring to the city 50,000 people.

Postmaster W. J. Warner, urging the early payment of taxes by all Kiwanians, who have not already responded, spoke for a few minutes before the club today.

A nominating committee for Kiwanis club was named today by President Ted Gebauer, and is composed of J. C. Mann, C. S. Butterfield and W. J. Warner.

Montgomery Ward Host to 4-H Members



Members of the 4-H clubs in position in front were guests Wednesday of Montgomery Ward & company for their annual luncheon in the huge building of the national club members included a personality train from Scotland, the battleship Oregon, the zoo in Washington Park and a football game at the Multnomah Stadium in the afternoon.

Markets

Livestock PORTLAND, Ore., Oct. 30.—(AP)—CATTLE: 1700; calves 170, steady to strong. Steers, common and medium, 2.50-3.00; heifers, common and medium, 2.50-2.75; cows, common and medium, 2.25-3.00; low cutter and cutter, 1.25-2.25; bulls, cutters, and medium, 1.75-3.00; vealers, good and choice, 6.00-7.00; cull, common and medium, 3.00-5.00; calves, good and choice, 4.00-5.50; common and medium, 2.50-4.00.

Portland Produce

PORTLAND, Ore., Oct. 30.—(AP)—BUTTER—Prints, extras, 24c; standards, 23c lb. BUTTERFAT—Portland delivery: A grade 21c; farmer's door delivery, 19c per lb.; sweet cream 8c higher. EGGS—Pacific Poultry Producers' selling price: Fresh extra special, 31c; extras 29c; standards 24c; medium 25c; pullets 18c dozen. Buying price by wholesalers: Fresh extra, 29c doz; fresh 29c; medium 20c doz; under-grade, 18c; pullets 14c. CHEESE—92 score, Oregon triple, 11 1/2c; loaf, 12 1/2c lb.; brokers will pay 1/2c below quotations.

Wall St. Report

Table with columns for Stock Sale Averages and Bond Sale Averages. Includes data for Oct. 30, Today, Prev. day, Week ago, Year ago, and 3 Yrs. ago.

Eagles' Leader



With Jack Hueston (above) named president of the local Fraternal Order of Eagles, Aerie No. 2090, a number of plans for increasing the local lodge have been made, and are expected to progress rapidly.

FOUR AIR CIRCUS PILOTS DIE IN MID-AIR COLLISION

AMARILLO, Tex., Oct. 30.—(AP)—While thousands of horrified spectators watched, two stunning airplanes collided Sunday over Amarillo, bringing death to four "air circus" fliers.

A ship carrying Pilot Ezra Wiggins, of Hooker, Okla., Bill Tullis, of Liberal, Kansas, and Frank Clay, of Morrill, Neb., plunged into a street three blocks from the city's main business thoroughfare. All three were killed.

The other plane, piloted by Art Stude of Woodward, Okla., crashed through the roof of a laundry. Only two persons were in the building and neither was hurt. Stude died of his injuries.

As part of the air show, streamers had been dropped from another plane and the two which collided were flying through them.

WESTBORO, Mass., Oct. 30.—(AP)—Four persons lost their lives in a Sunday afternoon airplane crash as their cabin ship fell onto the Fairbanks farm near the Westboro airport.

CONFER AT SENATE STOCK QUIZ



W. W. Aldrich (left), president of the Chase National bank of New York, confers in Washington with Albert H. Wiggin, former chairman of the bank's board of directors, at the senate banking committee's investigation of stock market practices.

TROUBLE FLARES IN COTTON STRIKE



A group of striking cotton pickers in Kern county, Cal., where one man was killed and several injured in a pitched battle between strikers and farmers. Another outbreak in Fresno county cost two lives.

SONS MAY PLAY HERE SATURDAY

Tentative plans for bringing to Medford next Saturday, November 4, the Marin Junior college-Southern Oregon Normal school game, were presented in this city today by Coach Howard Hobson of the normal school, a visitor at the luncheon of the Kiwanis club.

20 ENROLLED FOR DUTY WITH CCC

Enrollment of the 20 CCC men between the ages of 18 and 25 was to be completed by the Jackson county relief committee at four o'clock this afternoon, it was announced by that organization. Twenty men was the quota allowed for this county, and the enrollments were all made today, through authorization by the Oregon state relief committee.

BURIAL SERVICE FOR UNKNOWN TRANSIENT

Rev. W. R. Baird of the First Christian church conducted the funeral services Saturday afternoon for the unknown transient who was fatally injured Wednesday night when struck by an automobile as he was walking down the Pacific highway. Interment was in the L. O. O. F. cemetery.

FUNERAL FOR CORBIN AT PERL'S WEDNESDAY

Funeral services for Charles Ezra Corbin will be held at the Perl Funeral home Wednesday morning at 11 o'clock, with Rev. Joseph Knotts of the Methodist Episcopal church presiding. Interment will be in the L. O. O. F. cemetery.

Central Oregon HAS HEAVY SNOW

BEND, Ore., Oct. 30.—(AP)—The Cascade mountains of central Oregon were covered by snow which ranged in depth from four inches at Elk lake to about one foot in the foothills of the Three Sisters near the timberline.

Portland Wheat

PORTLAND, Oct. 30.—(AP)—Table: Wheat: Open High Low Close. Dec. 77 1/2 77 3/4 76 1/4 76 1/2. May 72 72 1/2 70 1/2 70 1/2.

Chicago Wheat

Open High Low Close. Dec. 89 1/4 89 1/2 87 1/2 88 1/4. May 92 1/2 93 1/2 89 1/2 90 1/4. July 90 90 88 1/2 89 1/2.

Life Long Friend Keeps Them Fit at 70

This info. all-vegetable laxative—NR—has been so dependable as a family doctor during their trying "after forty" years. NR keeps them regular—year after year—faithfully—without ever any need to increase the dose.

Chicago Wheat

Open High Low Close. Dec. 89 1/4 89 1/2 87 1/2 88 1/4. May 92 1/2 93 1/2 89 1/2 90 1/4. July 90 90 88 1/2 89 1/2.

Chicago Wheat

Open High Low Close. Dec. 89 1/4 89 1/2 87 1/2 88 1/4. May 92 1/2 93 1/2 89 1/2 90 1/4. July 90 90 88 1/2 89 1/2.

Chicago Wheat

Open High Low Close. Dec. 89 1/4 89 1/2 87 1/2 88 1/4. May 92 1/2 93 1/2 89 1/2 90 1/4. July 90 90 88 1/2 89 1/2.

Chicago Wheat

Open High Low Close. Dec. 89 1/4 89 1/2 87 1/2 88 1/4. May 92 1/2 93 1/2 89 1/2 90 1/4. July 90 90 88 1/2 89 1/2.

Chicago Wheat

Open High Low Close. Dec. 89 1/4 89 1/2 87 1/2 88 1/4. May 92 1/2 93 1/2 89 1/2 90 1/4. July 90 90 88 1/2 89 1/2.

DUCK HUNTING GOOD ROCKY POINT AREA

Yesterday was a good day for duck shooting, as the report brought back to Medford by a number of hunters, with meat and feathers to prove their contention.

Constipated 30 Years Aided By Old Remedy

"For thirty years I had constipation. Souring food, from stomach choked me. Since taking Adierika I am a new person. Constipation is a thing of the past."—Alice Burns, Health's Drug Store and Medford Pharmacy.

COAL at LOWER Price \$14.00 Per Ton

2 Days More Oct. 30 and 31st \$1.00 per ton higher in price after Oct. 31st

Buy Today AND SAVE MONEY

Use Royal Utah Coal

—It is clean and lasts longer

DRY WOOD — FUEL OIL

Phone 832 F. E. Samson Co. Phone 833 229 N. Riverside

Everything Must Be Right!

At a time when you have need of our services, you want EVERYTHING to be arranged in perfect order without going into intricate details...

CONGER FUNERAL PARLOR

WEST MAIN AT NEWTOWN

POPULIST LEADER OF PAST DAY DIES

CALICOON, N. Y., Oct. 30.—(AP)—Mrs. Mary Elizabeth Lease, 83, a leader of the populist cause in Kansas who advised farmers forty years ago to raise less corn and more bell, died yesterday.

She was president of the state board of charities in Kansas in 1909, the first woman in the United States to hold such office.

Born at Ridgeway, Pa., she was a daughter of Joseph P. and May Elizabeth Murray Glynn. She went to Kansas before she was 18 years old and was married there in 1871 to C. S. Lease, a druggist. They were divorced in 1902 after they had been separated ten years.

DISTRIBUTOR WANTED

To introduce and distribute the famous old brand of draught and bottle beer—HOP GOLD. This high quality beer is now being brewed by the Star Brewery Company of Vancouver, Washington, which was first established in 1890.

WRITE OR CALL THE STAR BREWERY COMPANY CONCERNING YOUR QUALIFICATIONS FOR DISTRIBUTOR OF HOP GOLD BEER IN THIS TERRITORY. STAR BREWERY COMPANY Vancouver, Washington



THE 1ST THING I'M GOING TO BUY IS A MAYTAG

"With prices going up I want to buy a lot of things. But not another thing till I get a Maytag. Because with a Maytag I can save money to buy other things I want."

That's sensible buying. Because it is buying quality—quality you can use—quality that pays a weekly return on the money you invest. It is a fact that the Maytag washes clothes faster, washes them more thoroughly, more gently and at lower cost per washing because it is a better designed, better built washer.

You can still buy a Maytag for as little as \$74.50

THE MAYTAG COMPANY Manufacturers Founded 1893 NEWTON, IOWA

FICK'S HARDWARE STORE

131 W. Main St. Phone 300. Medford, Oregon. ROGUE RIVER HDWE. CO., Grants Pass, Ore. LOW PRICES ON ALL MAYTAGS EQUIPPED WITH GASOLINE MULTI-MOTOR

HOTEL WILLARD

Klamath Falls CLAMATH BASIN'S LEADING HOTEL

We make a specialty of catering to commercial travelers. Modern, light, sample rooms. Popular price Dining Room and Coffee Shop.

W. D. Miller, Pres. S. W. Percus, Mgr.