

NEW YORK DAY BY DAY By O. O. McIntyre

NEW YORK, Oct. 27.—Thoughts while strolling: Somehow a dress train suggests Beatrice Lillie. Kenyon Nicholson is a handsome of the current play-weights. And has a seasonal hit. Rex Weber and Phil Baker bear a resemblance to Frank Dobie and Will Rogers not only look but talk alike.

One word description of Barbara Bennett—marbly. They say Marilyn Miller at 35, is richest of the American actresses, she put it all in government bonds. Whatever became of Theda Bara? Noel Coward's influence on manners is hilariously revealed in that revue.

Even the chambermaids and waiters in a hotel, appears to get so much rolicking fun out of life as Harold Ross. Mrs. Arthur Somers Roche's Dutch bob. Percy Hammond calls the Dorothy Parker crowd "the charade and anagram set."

One of my favorite people—Robert Rubin. Technicolor couldn't photograph that sartorial splash of Mickey Neilan—green shirt with a salmon pink tie. When that Frances MacFarlane sings a melody, she has all of a sudden becomes a sedate drawing room. And that's art!

Prize fighters are notoriously shy of humor. Nearly all catch a joke on the third bounce. Imagine Gardner fielding a fast one! The exception is Jack Dempsey, who is still a practical joker. Two days before one of his championships he appeared for a sparring workout with his left arm bandaged and in splints. Everybody in the training squad turned oyster white. Dempsey, simulating agony, went through the paces, poking awkwardly with his injured fin. Suddenly receiving a light jab, he went spinning around the ring in cart wheels. It was expert comedy.

The most striking natural resemblance the theatre has seen since a fellow of forgotten name burlesqued Caruso in a Follies is that of Tommy Hamilton to the Prince of Wales at the Music Box. He has David's face, walk, talk and hair brush—a T. In casting circles, "a natural."

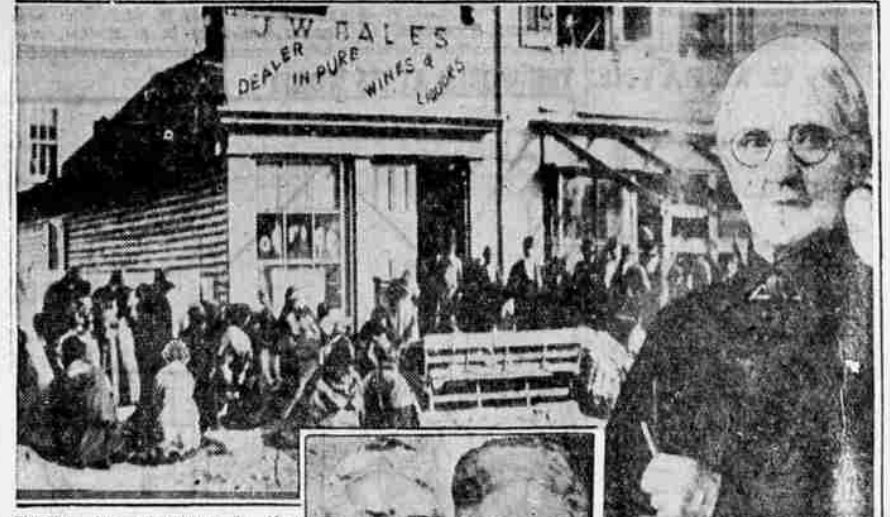
The Guild of Autograph Hounds at first night has embellished their odd calling with a new co-operation. Along the curbs out-riders peer into limousines and megaphones the names of celebrities through their hands to the hysteric half circle at the entrance. Calling "Tallulah Bankhead!" Or "Howard Chandler Christy." Thus most notable debouch from their herds in a spotlight huzzah. The most consistent non-autographist is Ina Claire.

When Nunnally Johnson was first called to Hollywood to labor on his film script, he spent three months around the studios while others dissected and reassembled his brain-child. One morning at one of those dreary, meaningless conferences, Johnson clapped his hands and sat up with a perk. "I remember now," he beamed. "I came out here to work on my play."

Otis Skinner is among the few sterling actors who is an incurable trouper. He prefers the road with sleeper jumps and uncomfortable hotels to a New York run, his comfortable home and admiring cronies at the Players. This season he is exhuming in the provinces with a high class revival of "Uncle Tom's Cabin." And reverses the usual hogliness of stars for top billing. He insisted Queenie Smith as "Topsy" be co-starred. Deserving, of course, but cracks up the stellar tradition.

For twenty years I've been seeing George White around. In that time his costume never changed—blue serge suit, white, soft-collared shirt and midjet black bow. Plus, of course, the precise middle hair-part. If some day he busts out in zig-zaggy stripes and a red tie, like the man biting a dog, will be news.

Women Who 'Prayed Out' Saloons Undismayed by Repeal Tide's Rise



Fighting for temperance in the Hillsboro, Ohio, of 1873 meant praying before saloons and appealing to proprietors to close up shop. Mrs. Eliza West, Mrs. Leander Detwiler and Mrs. Kate Doggett (left to right) are three of the seven survivors of the original "praying band" of '70. The old photograph above shows a campaign in progress before the door of one of the town's emporiums.

HILLSBORO, Ohio.—(AP)—To the survivors of that "praying band" of '70 women who nurtured the organized temperance movement here in 1873, national prohibition is not a failure despite the march of repeal. They're Not Dismayed. Those who can see from their front porches the scene of their early conquest of liquor are Mrs. Deander Detwiler, Mrs. Eliza West, Mrs. Kate Doggett, Mrs. Levisa Dill and Mrs. Elizabeth Marshall. On the other side of the seven survivors of the original "praying band" of '70. The old photograph above shows a campaign in progress before the door of one of the town's emporiums.

higher than last year, but I find \$1,000 more for interest in warrants and \$1,600 more for insurance. (Two items take very nearly half of it.) It seems to me there are entirely too many loose items of expense, not particularly specified, such as "Other Expense," "Supplies," "Maintenance and Repairs," "Replacements," totaling around \$50,000. If this could be specified like, for instance, our city fire department wants two 1 1/2-inch hoses, cost \$30, then, if we don't want them to have them we say "no."

There is one fact about our school system that makes our expenses seem terribly high, and that is that out of our six schools we have built and are practically maintaining the same as one of them completely free of charge to outside or tuition pupils and our school board is powerless to act. Summing up the entire tax situation from the taxpayers' point of view, it amounts to a good big interest on our property investments and makes a problem that we are simply unable to meet. The schools as well as other public expense absolutely cannot be met by us and we are going to see an enormous amount of tax foreclosures in the next three years. The budgets should all be trimmed to the very bone, and this is not being done by our schools.

In closing, I want to voice a sincere appreciation to our superintendent, Mr. Hedrick, for allowing his salary to be reduced \$900.

Not What LeRoy Clarke To the editor: I read an account in your paper this morning of the accident at Cascade Gorge, and wish it to be known that the Glenn Wyatt Clarke who shot Gillette is NOT What LeRoy Clarke, who has resided at Cascade Gorge for the past two years and is now in Ashland. I see that you have stated that Glenn Clarke is an experienced woodsman, who has resided at Cascade Gorge for many years. This is wrong. Glenn Wyatt Clarke is the son of a nephew of C. W. Clarke, who has resided at Cascade Gorge, and is just out here from Oklahoma for a visit. He, Glenn Clarke, and Gillette, came to Cascade Gorge together on a visit about 10 days ago and have not lived here before, to the best of my knowledge. I am writing this as I fear that many of my friends, as well as friends of the C. W. Clarke family, will associate the name, and place of residence, and come to the conclusion that the hunter was me, or some of my immediate family. If there is any way to correct that wrong impression, I would appreciate it very much if you will do so immediately. WHAT LE ROY CLARKE, Box 6, Ashland, Ore.

Bright Spots (By United Press.) General Motors corporation earns third quarter net income of \$33,341,618, against net loss of \$4,954,223 in corresponding 1932 quarter. Aviation Corporation of Delaware reports September quarter net profit of \$74,769 against net loss of \$309,630 in similar period last year. P. W. Dodge corporation reports building construction contracts east of Rocky mountains in first half of October totaled \$54,940,900, against \$54,359,200 in corresponding 1932 period. Commercial Solvents corporation earns third quarter net income of \$642,317, against \$305,352 in similar 1932 period. Standard Brands, Inc. reports September net income of \$1,689,448, against \$2,241,716 in similar months last year.

350 feet; West 148 feet to beginning described Deed Record 134, Pages 187-8, \$143.00. Ashland—Section 15, Township 39, Range 1 East, Land described Deed Record 97, Page 378, 15 1/2 acres, \$558.00. Orchard Tract, Eagle Heights Fruit Farm, 10 acres, Lot 28, \$57.87. Orchard Tract, Monitor Orchard, Lots 1 to 72 inclusive, 383 acres, \$1,894.18. Orchard Tract, Rogue River Valley Orchard Company, Lot 4, Block G, \$1,106.69. Orchard Tract, Rogue River Valley Orchard Co., 2.3 acres described Deed Record 110, Page 599, part Lot 16, Block 1 S, 3 acres, Lot 17, Block 1, \$61,224. Orchard Tract, Rogue River Valley Orchard Co., 3 acres Lot 18, Block 1, \$117.05. Orchard Tract, Rogue River Valley Orchard Co., 1 East, 40 acres, Lot 20, Bk. 1, \$106.69. Medford—Kenwood Addition, described Deed Record 145, Page 331; North 12 1/2 feet Lot 13, Block 3, South 37 1/2 feet Lot 18, Block 4, \$1,000.00. Medford—Mary Place Addition, Lots 3-4, Block 2, \$38.12. Medford—Medford Heights Addition 1 to 10, Block 1, Personal Tax applied, \$651.25. Medford—Walnut Park Addition, Lots 1-2, Block 4, \$27.35. Medford—Walnut Park Addition, Lot 3, Block 4, \$17.10. Medford—Walnut Park Addition, Range 1 East, 160 acres, \$130.27. N. 1/2 of NW 1/4, SW 1/4 of NW 1/4, Section 23, Township 32, Range 1 East, 120 acres, \$222.00. SW 1/4 of SW 1/4, SE 1/4 of SW 1/4, Section 29, Township 34, Range 1 East, 80 acres, \$83.28. NW 1/4 of SE 1/4, Section 36, Township 33, Range 1 East, 80 acres, \$121.23. E 1/2 of NW 1/4, SW 1/4 of NW 1/4, Section 6, Township 35, Range 1 East, 121 acres, \$101.23. SW 1/4, Section 9, Township 35, Range 1 East, 80 acres, \$121.23. E 1/2 of NE 1/4, NE 1/4 of SE 1/4, Section 13, Township 35, Range 1 East, 120 acres, \$90.87. S 1/2 of NW 1/4, SW 1/4 of NE 1/4, NE 1/4 of NE 1/4, Section 14, Township 35, Range 1 East, 13 1/2 A., \$11.44. E 1/2 of NE 1/4, SW 1/4 of SW 1/4, Section 5, Township 38, Range 1 East, 120 acres, \$73.64. Lot No. 1, described Deed Record 81, Page 486, Section 29, Township 38, Range 1 East, 3.8 acres, \$14.63. Land described Deed Record 183, Page 618, Section 31, Township 38, Range 1 East, \$15.15. Land described Deed Record 142, Page 124, Section 35, Township 38, Range 1 East, 100 A., \$424.24. Land described Deed Record 165, Page 458, Section 2-3, Township 39, Range 1 East, 36.5 acres, \$44.84. Land described Deed Record 87, Page 458, less 1/2 acre ditch right of way, less Deed Record 165, Page 458, Sections 2-3, Township 39, Range 1 East, 36.5 acres, \$29.29. Deed Record 106, Page 552, Section 2, Township 39, Range 1 East, 12 A., \$539.64. W 1/2 of SE 1/4, SW 1/4 of SE 1/4, Section 19, Township 39, Range 1 East, 20 acres, \$17.80. Land described Deed Record 157, Page 236, Section 16, Township 39, Range 1 East, 5 A., \$65.75. S 1/2 of SW 1/4, SW 1/4 of SW 1/4, less Deed Record 154, Page 168, Section 26, Township 39, Range 1 East, 75 acres, \$77.88. NE 1/4, Section 26, Township 40, Range 1 East, 160 acres, \$210.01. SE 1/4 Section 2, Township 41, Range 1 East, 160 acres, \$57.39. N 1/2 of N 1/2, Section 12, Township 41, Range 1 East, 160 acres, \$70.89. Lots 1-2, E 1/2 of NW 1/4, Section 19, Township 32, Range 2 East, Personal Tax applied, \$218.02. SE 1/4, Section 14, Township 33, Range 2 East, 160 acres, \$338.10. SE 1/4, Section 32, Township 36, Range 2 East, 160 acres, \$61.37. SE 1/4, Section 32, Township 36, Range 2 East, Personal Tax applied, \$27.26. S 1/2 of NW 1/4, N 1/2 of SW 1/4, Section 18, Township 37, Range 2 East, 160 acres, \$97.23. NE 1/4, Section 23, Township 40, Range 1 East, 160 acres, \$117.50. Lot No. 1, S 1/2 of NE 1/4, SE 1/4 of NW 1/4, Section 4, Township 33, Range 3 East, 160 acres, \$440.00. S 1/2 of NE 1/4, less timber, Section 33, Township 35, Range 3 East, 40 acres, \$28.93. SE 1/4 of SW 1/4, SW 1/4 of SE 1/4, less timber, Section 19, Township 35, Range 3 East, 40 acres, \$28.93. NW 1/4 of NE 1/4, Section 19, Township 32, Range 4 East, 40 acres, \$78.87. NW 1/4 of NE 1/4, E 1/2 of NW 1/4, Section 30, Township 32, Range 4 East, 40 acres, \$220.61. SE 1/4 of NW 1/4, SW 1/4 of NE 1/4, E 1/2 of NE 1/4, Section 26, Township 34, Range 1 West, 160 acres, \$191.75. E 1/2 of SW 1/4 of SE 1/4, Section 34, Township 34, Range 1 West, 30 acres, \$26.78. NE 1/4 of SE 1/4, Section 1, Township 35, Range 1 West, 40 acres, \$43.45. S 1/2 of NW 1/4, NE 1/4 of SW 1/4, SE 1/4 of NW 1/4, Section 8, Township 36, Range 3 East, 160 acres, \$375.00. S 1/2 of SE 1/4, less timber, Section 19, Range 3 East, 60 acres, \$28.88. N 1/2 of SW 1/4, SE 1/4 of SW 1/4, Section 39, Range 3 East, 280 acres, \$444.73. SE 1/4 of SW 1/4, Section 19, Township 32, Range 4 East, 40 acres, \$78.87. NW 1/4 of NE 1/4, E 1/2 of NW 1/4, Section 30, Township 32, Range 4 East, 40 acres, \$220.61. SE 1/4 of NW 1/4, SW 1/4 of NE 1/4, E 1/2 of NE 1/4, Section 26, Township 34, Range 1 West, 160 acres, \$191.75. E 1/2 of SW 1/4 of SE 1/4, Section 34, Township 34, Range 1 West, 30 acres, \$26.78. NE 1/4 of SE 1/4, Section 1, Township 35, Range 1 West, 40 acres, \$43.45. S 1/2 of NW 1/4, NE 1/4 of SW 1/4, SE 1/4 of NW 1/4, Section 8, Township 36, Range 3 East, 160 acres, \$375.00. S 1/2 of SE 1/4, less timber, Section 19, Range 3 East, 60 acres, \$28.88. N 1/2 of SW 1/4, SE 1/4 of SW 1/4, Section 39, Range 3 East, 280 acres, \$444.73. SE 1/4 of SW 1/4, Section 19, Township 32, Range 4 East, 40 acres, \$78.87. NW 1/4 of NE 1/4, E 1/2 of NW 1/4, Section 30, Township 32, Range 4 East, 40 acres, \$220.61. SE 1/4 of NW 1/4, SW 1/4 of NE 1/4, E 1/2 of NE 1/4, Section 26, Township 34, Range 1 West, 160 acres, \$191.75. E 1/2 of SW 1/4 of SE 1/4, Section 34, Township 34, Range 1 West, 30 acres, \$26.78. NE 1/4 of SE 1/4, Section 1, Township 35, Range 1 West, 40 acres, \$43.45. S 1/2 of NW 1/4, NE 1/4 of SW 1/4, SE 1/4 of NW 1/4, Section 8, Township 36, Range 3 East, 160 acres, \$375.00. S 1/2 of SE 1/4, less timber, Section 19, Range 3 East, 60 acres, \$28.88. N 1/2 of SW 1/4, SE 1/4 of SW 1/4, Section 39, Range 3 East, 280 acres, \$444.73. SE 1/4 of SW 1/4, Section 19, Township 32, Range 4 East, 40 acres, \$78.87. NW 1/4 of NE 1/4, E 1/2 of NW 1/4, Section 30, Township 32, Range 4 East, 40 acres, \$220.61. SE 1/4 of NW 1/4, SW 1/4 of NE 1/4, E 1/2 of NE 1/4, Section 26, Township 34, Range 1 West, 160 acres, \$191.75. E 1/2 of SW 1/4 of SE 1/4, Section 34, Township 34, Range 1 West, 30 acres, \$26.78. NE 1/4 of SE 1/4, Section 1, Township 35, Range 1 West, 40 acres, \$43.45. S 1/2 of NW 1/4, NE 1/4 of SW 1/4, SE 1/4 of NW 1/4, Section 8, Township 36, Range 3 East, 160 acres, \$375.00. S 1/2 of SE 1/4, less timber, Section 19, Range 3 East, 60 acres, \$28.88. N 1/2 of SW 1/4, SE 1/4 of SW 1/4, Section 39, Range 3 East, 280 acres, \$444.73. SE 1/4 of SW 1/4, Section 19, Township 32, Range 4 East, 40 acres, \$78.87. NW 1/4 of NE 1/4, E 1/2 of NW 1/4, Section 30, Township 32, Range 4 East, 40 acres, \$220.61. SE 1/4 of NW 1/4, SW 1/4 of NE 1/4, E 1/2 of NE 1/4, Section 26, Township 34, Range 1 West, 160 acres, \$191.75. E 1/2 of SW 1/4 of SE 1/4, Section 34, Township 34, Range 1 West, 30 acres, \$26.78. NE 1/4 of SE 1/4, Section 1, Township 35, Range 1 West, 40 acres, \$43.45. S 1/2 of NW 1/4, NE 1/4 of SW 1/4, SE 1/4 of NW 1/4, Section 8, Township 36, Range 3 East, 160 acres, \$375.00. S 1/2 of SE 1/4, less timber, Section 19, Range 3 East, 60 acres, \$28.88. N 1/2 of SW 1/4, SE 1/4 of SW 1/4, Section 39, Range 3 East, 280 acres, \$444.73. SE 1/4 of SW 1/4, Section 19, Township 32, Range 4 East, 40 acres, \$78.87. NW 1/4 of NE 1/4, E 1/2 of NW 1/4, Section 30, Township 32, Range 4 East, 40 acres, \$220.61. SE 1/4 of NW 1/4, SW 1/4 of NE 1/4, E 1/2 of NE 1/4, Section 26, Township 34, Range 1 West, 160 acres, \$191.75. E 1/2 of SW 1/4 of SE 1/4, Section 34, Township 34, Range 1 West, 30 acres, \$26.78. NE 1/4 of SE 1/4, Section 1, Township 35, Range 1 West, 40 acres, \$43.45. S 1/2 of NW 1/4, NE 1/4 of SW 1/4, SE 1/4 of NW 1/4, Section 8, Township 36, Range 3 East, 160 acres, \$375.00. S 1/2 of SE 1/4, less timber, Section 19, Range 3 East, 60 acres, \$28.88. N 1/2 of SW 1/4, SE 1/4 of SW 1/4, Section 39, Range 3 East, 280 acres, \$444.73. SE 1/4 of SW 1/4, Section 19, Township 32, Range 4 East, 40 acres, \$78.87. NW 1/4 of NE 1/4, E 1/2 of NW 1/4, Section 30, Township 32, Range 4 East, 40 acres, \$220.61. SE 1/4 of NW 1/4, SW 1/4 of NE 1/4, E 1/2 of NE 1/4, Section 26, Township 34, Range 1 West, 160 acres, \$191.75. E 1/2 of SW 1/4 of SE 1/4, Section 34, Township 34, Range 1 West, 30 acres, \$26.78. NE 1/4 of SE 1/4, Section 1, Township 35, Range 1 West, 40 acres, \$43.45. S 1/2 of NW 1/4, NE 1/4 of SW 1/4, SE 1/4 of NW 1/4, Section 8, Township 36, Range 3 East, 160 acres, \$375.00. S 1/2 of SE 1/4, less timber, Section 19, Range 3 East, 60 acres, \$28.88. N 1/2 of SW 1/4, SE 1/4 of SW 1/4, Section 39, Range 3 East, 280 acres, \$444.73. SE 1/4 of SW 1/4, Section 19, Township 32, Range 4 East, 40 acres, \$78.87. NW 1/4 of NE 1/4, E 1/2 of NW 1/4, Section 30, Township 32, Range 4 East, 40 acres, \$220.61. SE 1/4 of NW 1/4, SW 1/4 of NE 1/4, E 1/2 of NE 1/4, Section 26, Township 34, Range 1 West, 160 acres, \$191.75. E 1/2 of SW 1/4 of SE 1/4, Section 34, Township 34, Range 1 West, 30 acres, \$26.78. NE 1/4 of SE 1/4, Section 1, Township 35, Range 1 West, 40 acres, \$43.45. S 1/2 of NW 1/4, NE 1/4 of SW 1/4, SE 1/4 of NW 1/4, Section 8, Township 36, Range 3 East, 160 acres, \$375.00. S 1/2 of SE 1/4, less timber, Section 19, Range 3 East, 60 acres, \$28.88. N 1/2 of SW 1/4, SE 1/4 of SW 1/4, Section 39, Range 3 East, 280 acres, \$444.73. SE 1/4 of SW 1/4, Section 19, Township 32, Range 4 East, 40 acres, \$78.87. NW 1/4 of NE 1/4, E 1/2 of NW 1/4, Section 30, Township 32, Range 4 East, 40 acres, \$220.61. SE 1/4 of NW 1/4, SW 1/4 of NE 1/4, E 1/2 of NE 1/4, Section 26, Township 34, Range 1 West, 160 acres, \$191.75. E 1/2 of SW 1/4 of SE 1/4, Section 34, Township 34, Range 1 West, 30 acres, \$26.78. NE 1/4 of SE 1/4, Section 1, Township 35, Range 1 West, 40 acres, \$43.45. S 1/2 of NW 1/4, NE 1/4 of SW 1/4, SE 1/4 of NW 1/4, Section 8, Township 36, Range 3 East, 160 acres, \$375.00. S 1/2 of SE 1/4, less timber, Section 19, Range 3 East, 60 acres, \$28.88. N 1/2 of SW 1/4, SE 1/4 of SW 1/4, Section 39, Range 3 East, 280 acres, \$444.73. SE 1/4 of SW 1/4, Section 19, Township 32, Range 4 East, 40 acres, \$78.87. NW 1/4 of NE 1/4, E 1/2 of NW 1/4, Section 30, Township 32, Range 4 East, 40 acres, \$220.61. SE 1/4 of NW 1/4, SW 1/4 of NE 1/4, E 1/2 of NE 1/4, Section 26, Township 34, Range 1 West, 160 acres, \$191.75. E 1/2 of SW 1/4 of SE 1/4, Section 34, Township 34, Range 1 West, 30 acres, \$26.78. NE 1/4 of SE 1/4, Section 1, Township 35, Range 1 West, 40 acres, \$43.45. S 1/2 of NW 1/4, NE 1/4 of SW 1/4, SE 1/4 of NW 1/4, Section 8, Township 36, Range 3 East, 160 acres, \$375.00. S 1/2 of SE 1/4, less timber, Section 19, Range 3 East, 60 acres, \$28.88. N 1/2 of SW 1/4, SE 1/4 of SW 1/4, Section 39, Range 3 East, 280 acres, \$444.73. SE 1/4 of SW 1/4, Section 19, Township 32, Range 4 East, 40 acres, \$78.87. NW 1/4 of NE 1/4, E 1/2 of NW 1/4, Section 30, Township 32, Range 4 East, 40 acres, \$220.61. SE 1/4 of NW 1/4, SW 1/4 of NE 1/4, E 1/2 of NE 1/4, Section 26, Township 34, Range 1 West, 160 acres, \$191.75. E 1/2 of SW 1/4 of SE 1/4, Section 34, Township 34, Range 1 West, 30 acres, \$26.78. NE 1/4 of SE 1/4, Section 1, Township 35, Range 1 West, 40 acres, \$43.45. S 1/2 of NW 1/4, NE 1/4 of SW 1/4, SE 1/4 of NW 1/4, Section 8, Township 36, Range 3 East, 160 acres, \$375.00. S 1/2 of SE 1/4, less timber, Section 19, Range 3 East, 60 acres, \$28.88. N 1/2 of SW 1/4, SE 1/4 of SW 1/4, Section 39, Range 3 East, 280 acres, \$444.73. SE 1/4 of SW 1/4, Section 19, Township 32, Range 4 East, 40 acres, \$78.87. NW 1/4 of NE 1/4, E 1/2 of NW 1/4, Section 30, Township 32, Range 4 East, 40 acres, \$220.61. SE 1/4 of NW 1/4, SW 1/4 of NE 1/4, E 1/2 of NE 1/4, Section 26, Township 34, Range 1 West, 160 acres, \$191.75. E 1/2 of SW 1/4 of SE 1/4, Section 34, Township 34, Range 1 West, 30 acres, \$26.78. NE 1/4 of SE 1/4, Section 1, Township 35, Range 1 West, 40 acres, \$43.45. S 1/2 of NW 1/4, NE 1/4 of SW 1/4, SE 1/4 of NW 1/4, Section 8, Township 36, Range 3 East, 160 acres, \$375.00. S 1/2 of SE 1/4, less timber, Section 19, Range 3 East, 60 acres, \$28.88. N 1/2 of SW 1/4, SE 1/4 of SW 1/4, Section 39, Range 3 East, 280 acres, \$444.73. SE 1/4 of SW 1/4, Section 19, Township 32, Range 4 East, 40 acres, \$78.87. NW 1/4 of NE 1/4, E 1/2 of NW 1/4, Section 30, Township 32, Range 4 East, 40 acres, \$220.61. SE 1/4 of NW 1/4, SW 1/4 of NE 1/4, E 1/2 of NE 1/4, Section 26, Township 34, Range 1 West, 160 acres, \$191.75. E 1/2 of SW 1/4 of SE 1/4, Section 34, Township 34, Range 1 West, 30 acres, \$26.78. NE 1/4 of SE 1/4, Section 1, Township 35, Range 1 West, 40 acres, \$43.45. S 1/2 of NW 1/4, NE 1/4 of SW 1/4, SE 1/4 of NW 1/4, Section 8, Township 36, Range 3 East, 160 acres, \$375.00. S 1/2 of SE 1/4, less timber, Section 19, Range 3 East, 60 acres, \$28.88. N 1/2 of SW 1/4, SE 1/4 of SW 1/4, Section 39, Range 3 East, 280 acres, \$444.73. SE 1/4 of SW 1/4, Section 19, Township 32, Range 4 East, 40 acres, \$78.87. NW 1/4 of NE 1/4, E 1/2 of NW 1/4, Section 30, Township 32, Range 4 East, 40 acres, \$220.61. SE 1/4 of NW 1/4, SW 1/4 of NE 1/4, E 1/2 of NE 1/4, Section 26, Township 34, Range 1 West, 160 acres, \$191.75. E 1/2 of SW 1/4 of SE 1/4, Section 34, Township 34, Range 1 West, 30 acres, \$26.78. NE 1/4 of SE 1/4, Section 1, Township 35, Range 1 West, 40 acres, \$43.45. S 1/2 of NW 1/4, NE 1/4 of SW 1/4, SE 1/4 of NW 1/4, Section 8, Township 36, Range 3 East, 160 acres, \$375.00. S 1/2 of SE 1/4, less timber, Section 19, Range 3 East, 60 acres, \$28.88. N 1/2 of SW 1/4, SE 1/4 of SW 1/4, Section 39, Range 3 East, 280 acres, \$444.73. SE 1/4 of SW 1/4, Section 19, Township 32, Range 4 East, 40 acres, \$78.87. NW 1/4 of NE 1/4, E 1/2 of NW 1/4, Section 30, Township 32, Range 4 East, 40 acres, \$220.61. SE 1/4 of NW 1/4, SW 1/4 of NE 1/4, E 1/2 of NE 1/4, Section 26, Township 34, Range 1 West, 160 acres, \$191.75. E 1/2 of SW 1/4 of SE 1/4, Section 34, Township 34, Range 1 West, 30 acres, \$26.78. NE 1/4 of SE 1/4, Section 1, Township 35, Range 1 West, 40 acres, \$43.45. S 1/2 of NW 1/4, NE 1/4 of SW 1/4, SE 1/4 of NW 1/4, Section 8, Township 36, Range 3 East, 160 acres, \$375.00. S 1/2 of SE 1/4, less timber, Section 19, Range 3 East, 60 acres, \$28.88. N 1/2 of SW 1/4, SE 1/4 of SW 1/4, Section 39, Range 3 East, 280 acres, \$444.73. SE 1/4 of SW 1/4, Section 19, Township 32, Range 4 East, 40 acres, \$78.87. NW 1/4 of NE 1/4, E 1/2 of NW 1/4, Section 30, Township 32, Range 4 East, 40 acres, \$220.61. SE 1/4 of NW 1/4, SW 1/4 of NE 1/4, E 1/2 of NE 1/4, Section 26, Township 34, Range 1 West, 160 acres, \$191.75. E 1/2 of SW 1/4 of SE 1/4, Section 34, Township 34, Range 1 West, 30 acres, \$26.78. NE 1/4 of SE 1/4, Section 1, Township 35, Range 1 West, 40 acres, \$43.45. S 1/2 of NW 1/4, NE 1/4 of SW 1/4, SE 1/4 of NW 1/4, Section 8, Township 36, Range 3 East, 160 acres, \$375.00. S 1/2 of SE 1/4, less timber, Section 19, Range 3 East, 60 acres, \$28.88. N 1/2 of SW 1/4, SE 1/4 of SW 1/4, Section 39, Range 3 East, 280 acres, \$444.73. SE 1/4 of SW 1/4, Section 19, Township 32, Range 4 East, 40 acres, \$78.87. NW 1/4 of NE 1/4, E 1/2 of NW 1/4, Section 30, Township 32, Range 4 East, 40 acres, \$220.61. SE 1/4 of NW 1/4, SW 1/4 of NE 1/4, E 1/2 of NE 1/4, Section 26, Township 34, Range 1 West, 160 acres, \$191.75. E 1/2 of SW 1/4 of SE 1/4, Section 34, Township 34, Range 1 West, 30 acres, \$26.78. NE 1/4 of SE 1/4, Section 1, Township 35, Range 1 West, 40 acres, \$43.45. S 1/2 of NW 1/4, NE 1/4 of SW 1/4, SE 1/4 of NW 1/4, Section 8, Township 36, Range 3 East, 160 acres, \$375.00. S 1/2 of SE 1/4, less timber, Section 19, Range 3 East, 60 acres, \$28.88. N 1/2 of SW 1/4, SE 1/4 of SW 1/4, Section 39, Range 3 East, 280 acres, \$444.73. SE 1/4 of SW 1/4, Section 19, Township 32, Range 4 East, 40 acres, \$78.87. NW 1/4 of NE 1/4, E 1/2 of NW 1/4, Section 30, Township 32, Range 4 East, 40 acres, \$220.61. SE 1/4 of NW 1/4, SW 1/4 of NE 1/4, E 1/2 of NE 1/4, Section 26, Township 34, Range 1 West, 160 acres, \$191.75. E 1/2 of SW 1/4 of SE 1/4, Section 34, Township 34, Range 1 West, 30 acres, \$26.78. NE 1/4 of SE 1/4, Section 1, Township 35, Range 1 West, 40 acres, \$43.45. S 1/2 of NW 1/4, NE 1/4 of SW 1/4, SE 1/4 of NW 1/4, Section 8, Township 36, Range 3 East, 160 acres, \$375.00. S 1/2 of SE 1/4, less timber, Section 19, Range 3 East, 60 acres, \$28.88. N 1/2 of SW 1/4, SE 1/4 of SW 1/4, Section 39, Range 3 East, 280 acres, \$444.73. SE 1/4 of SW 1/4, Section 19, Township 32, Range 4 East, 40 acres, \$78.87. NW 1/4 of NE 1/4, E 1/2 of NW 1/4, Section 30, Township 32, Range 4 East, 40 acres, \$220.61. SE 1/4 of NW 1/4, SW 1/4 of NE 1/4, E 1/2 of NE 1/4, Section 26, Township 34, Range 1 West, 160 acres, \$191.75. E 1/2 of SW 1/4 of SE 1/4, Section 34, Township 34, Range 1 West, 30 acres, \$26.78. NE 1/4 of SE 1/4, Section 1, Township 35, Range 1 West, 40 acres, \$43.45. S 1/2 of NW 1/4, NE 1/4 of SW 1/4, SE 1/4 of NW 1/4, Section 8, Township 36, Range 3 East, 160 acres, \$375.00. S 1/2 of SE 1/4, less timber, Section 19, Range 3 East, 60 acres, \$28.88. N 1/2 of SW 1/4, SE 1/4 of SW 1/4, Section 39, Range 3 East, 280 acres, \$444.73. SE 1/4 of SW 1/4, Section 19, Township 32, Range 4 East, 40 acres, \$78.87. NW 1/4 of NE 1/4, E 1/2 of NW 1/4, Section 30, Township 32, Range 4 East, 40 acres, \$220.61. SE 1/4 of NW 1/4, SW 1/4 of NE 1/4, E 1/2 of NE 1/4, Section 26, Township 34, Range 1 West, 160 acres, \$191.75. E 1/2 of SW 1/4 of SE 1/4, Section 34, Township 34, Range 1 West, 30 acres, \$26.78. NE 1/4 of SE 1/4, Section 1, Township 35, Range 1 West, 40 acres, \$43.45. S 1/2 of NW 1/4, NE 1/4 of SW 1/4, SE 1/4 of NW 1/4, Section 8, Township 36, Range 3 East, 160 acres, \$375.00. S 1/2 of SE 1/4, less timber, Section 19, Range 3 East, 60 acres, \$28.88. N 1/2 of SW 1/4, SE 1/4 of SW 1/4, Section 39, Range 3 East, 280 acres, \$444.73. SE 1/4 of SW 1/4, Section 19, Township 32, Range 4 East, 40 acres, \$78.87. NW 1/4 of NE 1/4, E 1/2 of NW 1/4, Section 30, Township 32, Range 4 East, 40 acres, \$220.61. SE 1/4 of NW 1/4, SW 1/4 of NE 1/4,