

# Senators Expect History Repeat Itself in Coming World Series

## CROMIN TO CARRY ON WHERE BUCKY HARRIS LEFT OFF

Master Minding of Both Teams Will Be By Player-Managers — Both Great Hitters—Class of Defense

By ALAN GOULD, Associated Press Sports Editor. NEW YORK, Sept. 20.—(AP)—For the first time since 1906, the American and National league rivals for the "world baseball championship" both will be directed on the field by player managers.

There have been a number of player pilots since then, of course, on one side of the bat and on the other, but William Harold Terry of the Giants and Joseph Cronin of the Senators will be the first pair to combine master-minding and personal exploits in the world series since Fielder Jones led the Chicago Whitesox to triumph over Frank Chance's Cubs.

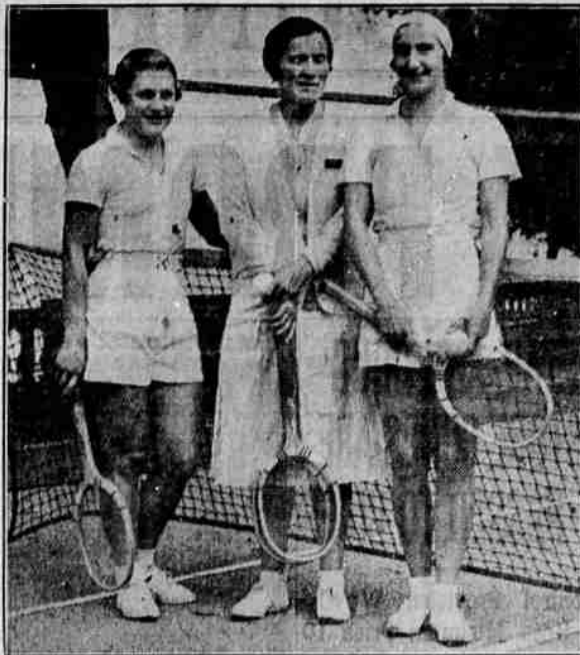
Follows Bucky Harris. The Senators expect history to repeat itself. Cronin carries the Washington banner into the championship from where "Bucky" Harris, then the "wonder," left off as the pilot of the pennant-winning Senators of 1924-25. They whipped the world champion Yankees. They expect to "take" the Giants.

Giants Couldn't Lose. "But once we got the idea we could win, why we simply couldn't lose," laughed Terry when I talked with him during the Giants' triumphant final tour of the west. "You can say we have won because we built up the greatest four-man pitching staff in either league and you would be correct. You can say we got a lot of breaks and that's right too. But the big thing to me is that every man on this club got out there, day after day, and played his head off. We forced a lot of those breaks because we refused to be licked."

Terry and Cronin both are great hitters. Defensively they are the class of their positions in either big league. They have the knack of setting the pace or producing the hits that count the most. Otherwise they are radically different personalities.

As ball players go Terry is a veteran, while Cronin is in his prime. But will be 35 in October and Joe 27 the same month. Cronin was born in San Francisco, Terry in Atlanta.

## BRITISH NET ACES PLAY IN WEST



England's feminine tennis stars who have entered the Pacific Southwest tournament, opening in Los Angeles Sept. 15, include (left to right) Mary Healey, Elizabeth Ryan and Dorothy Round. (Associated Press Photo)

## In the Series

NEW YORK.—(AP)—Roy (Tarzan) Parmelee and his "slide" ball will give the Washington Senators something to think about in the approaching world series.



ROY PARMELEE

## SOLONS NEED TWO MORE TO SEW UP AMERICAN CROWN

(By the Associated Press.) William Harold Terry, the sturdy young man from Memphis, who took over the management of the New York Giants a year ago when John McGraw retired, led his club back home from the west today with the National league pennant added to its baggage.

Meanwhile, the Washington Senators, who were believed to have sewed up the American league championship while the surprising Giants were still regarded as an uncertain quantity, were marking time along the pennant trail, needing two more decisions for them or against the New York Yankees to clinch the other place in the club's series.

The Giants settled the National league race yesterday—or rather had it settled for them when the Phillies knocked their last rivals, the Pittsburgh Pirates, out of the running. Knowing they were "in" from the second inning on, the Giants went down to a 12 to 3 defeat at the hands of the St. Louis Cardinals in the last game of their western tour.

## Cougar Prospect



R. T. Christofferson, hailed as one of the greatest athletes developed in the Hawaiian Islands, is bound for Washington State college, ready for the opening of the football season. He's a halfback. (Associated Press Photo)

Sept. .... 92 1/2 93 1/2 92 1/2 92 1/2  
Dec. .... 98 1/2 97 1/2 95 1/2 95 1/2  
May ..... 1.01 1.01 1/4 99 3/4 1.00 1/2

## Wall St. Report

Stock Sale Averages (Copyright, 1933, Standard Statistics Company)

Sept. 20:	Ind's	R's	U's	Total
Today	90.1	48.4	74.5	84.9
Prev. day	99.0	50.7	76.9	87.2
Week ago	97.6	52.0	84.5	85.2
Year ago	95.5	52.2	93.1	80.5
3 yrs. ago	100.7	119.7	219.5	164.6

Bond Sale Averages (Copyright, 1933, Standard Statistics Company)

Sept. 20:	Ind's	R's	U's	Total
Today	73.9	74.9	80.5	77.4
Prev. day	74.5	76.2	81.2	77.3
Week ago	75.4	79.0	82.6	79.0
Year ago	67.2	69.6	84.0	73.6
3 yrs. ago	94.9	109.4	101.3	101.9

## Markets

Livestock. PORTLAND, Sept. 20.—(AP)—Cattle: 200; Calves, 10; dragsy, weak; quotations unchanged.

HOGS: 1300; practically 15c higher for top and bulk of light butchers. Lightweight, good and choice, \$4.75 @ \$5.00; medium weight, good and choice, \$4.85 @ \$5.00; heavyweight, good and choice, \$4.40 @ \$5.00; other quotations unchanged.

## Portland Produce

PORTLAND, Sept. 20.—(P)—BUTTER—Prints, extras, 22c; standards, 21 1/2c.

EGGS—Pacific Poultry Producers' selling prices: Overalls, 28c; extras, 26c; standards, 23c; mediums, 23c; pullets, 17c dozen. Buying price by wholesalers: Fresh extras, 21c doz; firsts, 18c; mediums, 17c doz; under-grades, 13c; pullets, 13c.

MILK—Contract price, 4 pct., Portland delivery, \$1.70 cwt; B grade cream, 37 1/2c lb.

Wheat futures: Open High Low Close  
May ..... 83 83 83 83  
Sept. .... 73 1/4 73 1/4 73 1/4  
Dec. .... 78 78 78 78  
Dec. .... 78 78 77 1/4 77 1/4

## WELCOMES TOURISTS

NEW YORK, Sept. 20.—(AP)—The stock market stumbled nervously through obscure pathways today and after a series of sharp slumps and mild rallies, again turned downward in the last few minutes of trading.

Today's closing prices for 32 selected stocks follow:

Al. Chem. & Dye	140
Am. Can	94
Am. & Egn. Pow.	11 1/4
A. T. & T.	129 1/2
Anacosta	18 1/2
Aech. T. & E. P.	65 1/2
Bendix Avia.	17 1/2
Beth. Steel	37
California Packg.	23
Caterpillar Tract.	23 1/2
Chrysler	47 1/2
Coml. Solv.	2 1/2
Curtiss-Wright	2 1/2
DuPont	80 1/2
Gen. Foods	37 1/2
Gen. Mot.	33
Int. Harv.	41 1/2
I. T. & T.	14 1/2
Johns-Man.	54 1/2
Monty Ward	24
North Amer.	18 1/2
Penn. (J. C.)	49
Phillips Pet.	17 1/2
Radio	8 1/2
Sou. Pac.	37 1/2
Std. Brands	29 1/2
St. Oil Cal.	44
St. Oil N. J.	43 1/2
Trans. Amer.	6 1/2
Union Carb.	46 1/2
Unit. Aircraft	33 1/2
U. S. Steel	51 1/2

## Gold Price Hiked

WASHINGTON, Sept. 20.—(AP)—The treasury today, announced a price of \$32.28 an ounce for gold, an increase of 64 cents over yesterday's quotation.

Lightning, striking the home of L. L. Summers, Massillon, O., bent a pan filled with water.

NEW TOURIST fares for 24 a mile or less to nearly all Southern Pacific stations—good in coaches, also in Pullman tourist sleeping cars (plus berth).

TOURIST BERTH \$1.80 "Shasta" now carries a tourist car between Ashland and Oakland, California. Upper \$1.80, lower \$2.25. Big, roomy berths.

MEALS 80¢ to \$1.25 All Southern Pacific dining cars now serve complete luncheons and dinners for 80¢ to \$1.25, breakfasts for 50¢ to 90¢. For further information and examples of fares, see—

J. C. CARLE, Agent. Tel. 34

## WING LEE TAKES CLEAN DECISION OVER TOWNSEND

PORTLAND, Ore., Sept. 20.—(AP)—Coming from behind after losing the opening rounds, Ah Wing Lee, 136, Portland Chinese, finished strong to win the referee's decision from Billy Townsend, 141, of Vancouver, B. C., in the 10-round main event of last night's fight program here.

Lee drove a hard left to Townsend's chin in the first round that had the Canadian wobbly, but he failed to follow up his advantage, and Townsend took the round, scoring long rights to the head.

Townsend outboxed Lee through the second and third rounds and held his advantage through the fourth and fifth. In the sixth he switched to a body attack that had Lee guessing, but the Chinese fighter rallied in the seventh, then launched an attack in the eighth round that finally resulted in victory.

Lee piled up enough points in the eighth and ninth to even the match, then added the deciding points in the last round, with a series of steaming lefts to the body and the chin.

Chaskey Wright, 127, of Los Angeles, and Allan Foston, 128, of Vancouver, B. C., fought eight rounds to a draw in the semi-windup.

Johnny Higgins, 137, Portland, won a four-round decision from Roy Ockley, 137, Portland. Ray Cody, 137, Portland, won a technical knockout over Frankie Monroe, 136, Portland, in the first round of a scheduled four-round bout.

Ray Morgan, 154, Portland and Jack Drega, 147, Portland, went four rounds to a draw. Holie Westerman, 133, Portland, defeated Rosey Montag, 140, Portland, in the four-round opener.

The population of bears—black and brown—in Florida, is 255, government figures show.

Florence Graves, accredited piano instructor, Studio 220 No. Oakdale Phone 1042-W.

## NEGRO SENSATION WINS 44TH FIGHT

SEATTLE, Sept. 20.—(AP)—Seattle boxing promoters haven't yet brought them tough enough for Henry Woods, Yakima negro lightweight.

The young two-fluted battler, who is just out of high school, last night chalked up his 44th victory in 51 fights, scoring a technical knockout.

over Jimmie Alvarado, Los Angeles, after eight rounds in a scheduled 10-rounder. Woods has yet to lose a bout, as he gained draws in the other seven matches.

Joey Ponce, Seattle junior lightweight, gained a clean-cut decision over Huerfano Evans, Los Angeles, in 10 rounds. Manuel Ponce, Seattle, a brother of Joey, lost in six rounds to Eddie Ivogy, Vancouver, B. C., welterweight and Polson Smith, El Paso, Texas, won from Frank Sawyer, Vancouver, B. C., heavyweight, in four.

Phone 542. We'll haul away your refuse. City Sanitary Service.

WELCOMES TOURISTS

NEW YORK, Sept. 20.—(AP)—The stock market stumbled nervously through obscure pathways today and after a series of sharp slumps and mild rallies, again turned downward in the last few minutes of trading.

Today's closing prices for 32 selected stocks follow:

Al. Chem. & Dye 140  
Am. Can 94  
Am. & Egn. Pow. 11 1/4  
A. T. & T. 129 1/2  
Anacosta 18 1/2  
Aech. T. & E. P. 65 1/2  
Bendix Avia. 17 1/2  
Beth. Steel 37  
California Packg. 23  
Caterpillar Tract. 23 1/2  
Chrysler 47 1/2  
Coml. Solv. 2 1/2  
Curtiss-Wright 2 1/2  
DuPont 80 1/2  
Gen. Foods 37 1/2  
Gen. Mot. 33  
Int. Harv. 41 1/2  
I. T. & T. 14 1/2  
Johns-Man. 54 1/2  
Monty Ward 24  
North Amer. 18 1/2  
Penn. (J. C.) 49  
Phillips Pet. 17 1/2  
Radio 8 1/2  
Sou. Pac. 37 1/2  
Std. Brands 29 1/2  
St. Oil Cal. 44  
St. Oil N. J. 43 1/2  
Trans. Amer. 6 1/2  
Union Carb. 46 1/2  
Unit. Aircraft 33 1/2  
U. S. Steel 51 1/2

## HOW THEY STAND

(By the Associated Press.)

Team	W.	L.	Pct.
Los Angeles	106	68	.609
Hollywood	101	73	.580
Portland	98	78	.573
Sacramento	94	78	.547
Oakland	84	90	.483
San Francisco	78	99	.441
Missions	73	101	.420
Seattle	61	110	.357

## BASEBALL Yesterday's Results

Coast League. Los Angeles 3, Hollywood 3. San Francisco 10, Missions 9. Oakland 10, Seattle 4. Portland-Sacramento, rain.

National League. At Pittsburgh 3-2, Philadelphia 1-3. At Cincinnati 0, Boston 3. At Chicago 3, Brooklyn 12. At St. Louis 12, New York 3.

American League. At Washington 0-21, St. Louis 4. At Philadelphia 5, Detroit 2. At New York 10-10, Chicago 1-3. At Boston 4, Cleveland 3.

## SEEK VET UNITY TO REPEAL ACT

WASHINGTON, Sept. 20.—(AP)—Unification of five major veterans organizations behind a drive to repeal the national economy act and its cuts in former soldier benefits will be sought at a conference of national commanders here October 16.

G. K. Brobeck, legislative representative of the veterans of foreign wars, announced the call today on behalf of James E. Van Zandt, commander-in-chief of the organization.

Van Zandt, in a communication to leaders of the American Legion, Disabled Veterans of the World War, United Spanish War Veterans and Grand Army of the Republic, said: "Harmonious agreement on a set of principles to be adopted by this conference will serve as a warning to anti-veteran forces and political agitators that the veterans of this nation are again marching side by side—as in days of yore—determined for victory in behalf of a cause for which they are willing to fight with every ounce of energy at their command."

Montana's principal exports to foreign countries in 1932 were petroleum, petroleum products and phosphate rock.

Georgia's bright leaf tobacco crop this year brought farmers more than \$5,000,000 in cash.

## LIFE LICENSE HOLDERS NEED NEW DEER TAGS

PORTLAND, Ore.—(Spl.)—A flood of applications for renewal of deer tags on life licenses of pioneers and war veterans is being received at the offices of the state game commission according to H. L. Moreland, chief clerk of the commission.

"As a result of an act of the last legislature and orders of the commission, it is necessary for pioneers and war veterans holding life licenses issued prior to June, 1933, to send in their old licenses and a service fee of fifty cents where they wish deer tags for the current hunting season. Deer tags of former years will not be recognized by law enforcement officers," said Mr. Moreland.

## VISITING SPORTSMAN SAYS STEELHEAD GOING

GRANTS PASS, Sept. 20.—(Spl.)—Rogue river is slowly becoming depleted of its famous steelheads, said Col. R. P. Tisdale of Beverly Hills at the Chamber of Commerce forum luncheon this week.

The reason for this condition is that the drainage and irrigation ditches coming from the river are not screened, letting the small fish out on the farm lands, he declared.

## ST. MARYS FULLBACK BARRED BY INJURY

MORAGA, Cal., Sept. 20.—(AP)—Football hopes at St. Mary's college were given another setback today when the services of Santa Garbo, hard-plunging fullback, were lost for a second season. Examining doctors reported the neck injury suffered by the Los Angeles boy during the first game last season had not healed sufficiently to permit him to play this year.

## STRICT TRAINING FOR TIGER TEAM

By Harold Grove. The Medford high school players are settling down to strict training rules and Coach Burgher states that every man must be in bed by 10 o'clock each night except Saturday, with no eating of fatty foods, pork, highly spiced foods, sauces or condiments. He urges them to eat plenty of fruit, vegetables, lean meat and drink milk at meal times. No eating between meals.

Regular habits of eating and sleeping are very essential to the conditioning of the players.

The group as a whole is made up of inexperienced players, but should develop into a hard-playing football aggregation. It will be conscientious training and hard work from now on that makes the team.

## REED RETAINS TITLE BY PINNING BENNETT

SALEM, Sept. 20.—(AP)—Robin Reed of Reedsport retained his 145-pound Mid-west Wrestling association title by defeating George Bennett of Oklahoma two out of three falls here last night.

**NOW 2¢ A MILE**  
ANY DAY, ANY WHERE ON SOUTHERN PACIFIC!

**SAN FRANCISCO \$8.40**  
ROUND TRIP \$16.00

## SPECIAL OFFER



80¢ QUART \$2.65 GALLON

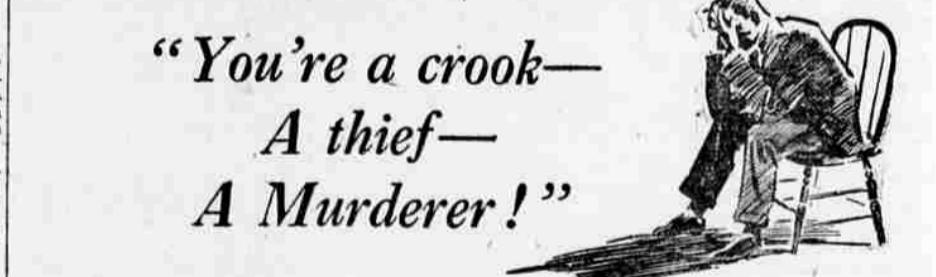
Imagine!... Already at very low price levels, now Fullererglo prices further reduced. But for two weeks only—from September 21 to October 4 (inc.). And remember—this is the West's most popular finish for interior walls and woodwork. Fullererglo; that famous semi-lustrous, satin-like finish whose long-lasting surface can be washed again and again. You won't have such an opportunity again this year. So take advantage of it right away. See one of the Fuller Paint Dealers or Fuller Paint Stores listed below.

Why waste time and money on cheap-quality paints, when you can buy Fuller Paints—the paints that last!—at such regular prices as these. Buy today while Fuller prices are still low.

Lustrous, long-lasting interior finish. Many colors. Quick-drying. DECORAT ENAMEL . . . . . Pint .. 78c  
Fullerwear Floor Enamel stands hard wear. Porcelain-like surface. Easy to wash. FLOOR ENAMEL . . . . . Quart \$1.05  
Fuller Pure Prepared is the highest-quality "house" paint made. It lasts! "HOUSE" PAINT . . . . . Quart \$1.00  
Hard, tough finish for all interior uses. Quick-drying. SPEEDITE VARNISH . . . . . Quart \$1.15  
Fullerene Wax gives a silken sheen that beautifies as well as protects. Stands hard wear. POLISHING WAX . . . . . Pound .. 65c

## WOODS LUMBER CO.

Jackson at Genessee Tel. 108



"You're a crook— A thief— A Murderer!"

HE was found unconscious, his memory gone, no identification except his mummbling of a name. Claimed by a woman as Jimmy Riddell, her husband, he spent day after day in a near coma, and then suddenly awakened, only to hear himself called a criminal, a burglar, a killer—by a total stranger who said she was his wife. It is the opening situation of

## OUTRAGEOUS FORTUNE

A Serial by Patricia Wentworth

NOT a shred of the past was there to guide this man as he walked into the great adventure in which Caroline Leigh was destined to play a major role. It was for both of them a harrowing experience, a cruel jest of fate; but from it sprang a love that bridged the chasm, and set them on the path toward a lifetime of happiness.

Starts Friday, September 22nd in the MAIL TRIBUNE