

CHILDREN'S LABOR IS ENDED BY NRA CODE INAUGURAL

(Continued from Page One)

completion of codes for the soft coal and retail trade industries. Officials worked feverishly to prepare these for President Roosevelt's signature, but final action was set for after Labor day.

Just how many children were affected by the Blue Eagle today was not estimated, but 1930 census figures showed 197,621 persons between 10 and 15 years of age gainfully employed outside of agriculture.

With volunteer workers winding up the week's intensive campaign, Johnson reported that "certain towns have gone clear over the top, not only with 100 per cent cooperation on the part of employers who have signed the President's agreement, but also by consumers." In his telephoned address to Detroit's N. R. A. celebration last night, he added:

Plan is Working.
"It makes me personally feel that N. R. A. is approaching a high production point. The plan right now is something more than a theory. It is actually working in most of our largest cities and in thousands of smaller communities."

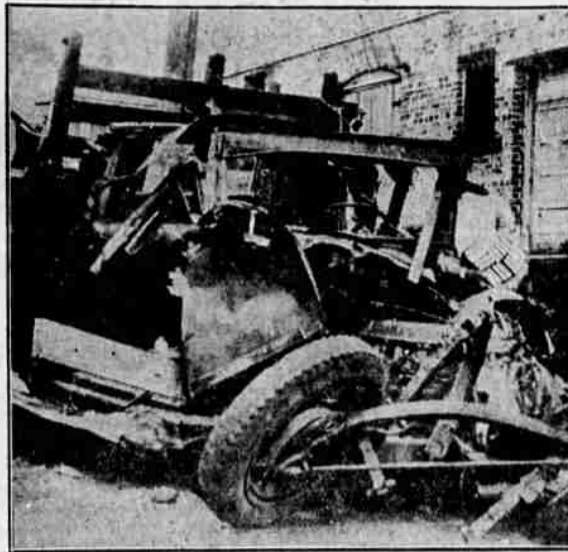
Justing prominently among N. R. A. difficulties were the continued silence of Henry Ford toward the automobile code, which becomes effective September 3, and labor's persistent criticism of that code's language permitting hiring and firing on a merit basis. Ford had until Tuesday to qualify for a Blue Eagle.

William Green, president of the American Federation of Labor, said in a statement issued as acting chairman of N. R. A.'s labor advisory board, that 29 additional industries were seeking to adopt the automobile labor provisions.

Green promised a last-ditch fight against a second approval of the automobile provision.

As Johnson turned toward tasks of reorganization, the first emergency reorganization of the N. R. A. neared a close. Since mid-June, it had secured code agreements for the country's basic industries: textiles, steel, oil, lumber, automobiles, electrical manufacturing, clothing and others, with coal and the big trade classification covering all retail stores due to join them.

SEVEN DIE IN TRUCK-TRAIN CRASH



Seven persons were killed and five others injured when this truck ran into the side of a motor train at a grade crossing in Lumberton, N. C. (Associated Press Photo)

LAURELHURST BIBLE SCHOOL ENDS WITH REVIEW OF LABORS

The two weeks' vacation Bible school at Laurelhurst, conducted by Mrs. R. S. Neely, closed Friday with a review of the work accomplished and a display of the notebooks and hand work.

Kindergarten pupils having given attendance records were each given a copy of the New Testament. The older children received Bibles, which were greatly prized.

The school was made possible by a gift of \$5 from the Bethany Presbyterian church of Grants Pass, of which Rev. J. W. Hamen is pastor.

Thanks is due Mrs. McInnis, who assisted with kindergarten, and Floyd E. Collier for transporting supplies. Both Rev. D. D. Randall of the American Sunday school union and Rev. and Mrs. Iverson visited the school.

CYCLONE THREAT SEEN BY CUBANS

HAVANA, Sept. 1.—(AP)—A cyclonic disturbance accompanied by 60 and 70-mile winds moved along the northern Cuban coast today, driving inhabitants inland and wrecking communication lines.

At 3 a. m. the storm centered over Isabela Dazaugue and later proceeded westward at a rate of about 12 or 13 miles an hour. It was exactly in this way that the disastrous hurricane of September, 1888, entered Cuba, causing 1,000 deaths and property damage in the millions.

Storm warnings were raised over Havana harbor at daybreak. The United Fruit ship Peten, scheduled to sail, remained here.

The national observatory reported that the storm would possibly attain hurricane proportions and might incline slightly to the south as it swept the island lengthwise.

Inhabitants of Matanzas, 53 miles east of Havana, and northern Santa Clara areas, were warned to leave the coast because of the possibility of high seas.

Storm warnings were raised over Havana harbor at daybreak. The United Fruit ship Peten, scheduled to sail, remained here.

The national observatory reported that the storm would possibly attain hurricane proportions and might incline slightly to the south as it swept the island lengthwise.

FIVE PERISH IN GRIP OF DESERT

MEXICALI, Lower California, Mex. Sept. 1.—(AP)—The twin towers of the southwestern desert country—thirst and heat—had added five new victims to their season's toll today.

When their automobile stalled on the lonely San Felipe road in the desert south of here, a woman, two children and two men perished from excessive heat and thirst. Their bodies were found late yesterday.

The victims: Elias Huerta, about 35 years of age; Ruperto, infant son, 5 years of age; Amelia, her daughter, of Mrs. Rosa Ahumada.

Francisco Luján, about 40; Eliseo Ramirez, about 35; Mrs. Ahumada and a nine-year-old son of Mrs. Huerta, were found near death in the automobile by two Mexican fishermen, who brought the woman and boy to the municipal hospital here.

JACKSONVILLE SCHOOL OPENS SEPTEMBER 11

Members of the Jacksonville school board announced this morning that

B. L. EDDY NAMED CIRCUIT JUDGE

SALEM, Sept. 1.—(AP)—Governor Julius L. Meier late yesterday appointed Ex-Senator B. L. Eddy of Roseburg as circuit judge of the second judicial district to succeed the late Judge J. W. Hamilton who died a month ago.

The second judicial district comprises Benton, Coos, Curry, Douglas, Lane and Lincoln counties.

Judge Eddy was born in Washington county, and is a graduate of the University of Oregon law school. He practiced law in Portland and later served as district attorney in Tillamook county. Under appointment by President Theodore Roosevelt Judge Eddy served as registrar of the United States land office. Since 1910 he has practiced law in Roseburg.

Judge Eddy served two terms as representative in the legislature from Douglas county and 16 years in the state senate. He is now chairman of the state hydro-electric commission. Judge Eddy will make his headquarters in Roseburg.

DEATH FOR THREE IN RAIL MISHAPS

PORTLAND, Ore., Sept. 1.—(AP)—Accidents on the Oregon City-Portland Interurban railroad caused three deaths and injury to two other persons last night.

Edward P. Scanlan, Jr., 19, of Portland, and Leon Brennan, 18, of Crescent Lake, were killed when their automobile crashed into the side of a 12-car freight train near Jennings lodge. With Whitney Vreeland, 22, and his sister, Johanna, 28, they were returning from a camping trip to Roseburg. Vreeland, the driver, suffered severe head injuries. The woman was less badly hurt.

Cornellus Corcoran, 30, of Oak Grove, was killed when he fell or stumbled in the path of the approaching street car.

SALEM, Ore.—(UP)—The Oregon Blue Book, official publication of the state, will be ready for distribution September 15. It is issued every two years.

PORTLAND PLANT RAZED BY BLAZE

PORTLAND, Ore., Sept. 1.—(AP)—A spectacular general alarm fire that called out 20 companies of firemen, destroyed the M & M woodworking plant here today. The plant employed 240 men. The owners, who said the mill was insured, were not prepared without additional survey, to estimate the loss.

About 2 a. m. the watchman said he saw flames on the roof around the smokestack. He turned on the sprinkler system and called firemen who put out the blaze in a few minutes. Three hours later the watchman again saw flames shoot suddenly from the roof. This time the fire fighters' efforts were futile.

Legion Cards Good At J'ville Dance Saturday Evening

Tomorrow night will be guest night for Legionnaires announced "Punk" Dunnington, of the Jacksonville Chamber of Commerce, at the famous Saturday night dances in that city. Members of the patriotic organiza-

NOWHERE ELSE

Such quality!



Sunshine Bakers use all their skill to make these delicious graham crackers more delicious! And such crackers they are!... wafer-crisp, smoother in texture, more appetizing in appearance! Sunshine Milk and Honey Graham Crackers are distinctively different, you will discover!... And Sunshine Bakers wisely select only the finest ingredients... milk, honey, and graham flour ground to a special fineness. No wonder these golden-brown squares are nourishing for school lunches... delicious after the movies or any time with milk!



Safeway Values For Saturday
Stores Closed Monday

SAFEGWAY STORES

LABOR DAY SPECIALS

BUY EARLY AND SAVE THE SAFEGWAY

SUGAR Pure Cane Fine Granulated Buy it Now For Canning 100 Lb. Bags	Pickles Best Foods Bread and Butter Tall Jar	12c	BEER Blue Ribbon Famous for Quality 6 Bottles	85c
Peanut Butter Max-i-num, Extra Quality	Green Olives Rosedale, include in the lunch Quart Jar	25c	Humboldt The Best Beer Dozen	\$1.73
Pancake Flour Max-i-num, Self Rising, Highest Quality.	Airway Coffee Fresh Roasted, Fresh Ground, A Good Coffee at a Low Price Lb. 21c	15c	Motor Oil \$1.19 Penn Champ. Close Out Price 2 Gal. Can	
Home Makers Bureau A treat for breakfast or supper. HAM GRIDDLE CAKES 2 cups soft bread 2 eggs 1 cup crumbs 2 tbs. melted 1 cup scalded milk shortening 1 cup cooked ham Salt and pepper Mix bread crumbs with milk; cut ham into fine pieces and mix to- gether. Combine with beaten eggs, melted shortening and season with salt and pepper. Drop by spoonfuls on to greased hot griddle and brown on both sides. Serve with soft but- ter and plenty of syrup. For aid in household problems, menu planning or special recipes, send in your request with a self- addressed, stamped envelope to Julia Lee Wright, director, Homemakers' Bureau, Safeway Stores, Inc., Box 660, Oakland, California.	Nob Hill World's Finest Coffee, Brought to You the Economical Way Lb.	59c	Tomato Juice 5c Campbell's, Full Flavor Tall Can	
Marshmallows Fluffiest, Fresh Today Lb.	Mayonnaise Best Foods. Double Whipped Pint Jar	17c	Wesson Oil 59c Buy Now, While We Have Stock at the Old Price 1/2 Gal. Can	
Crackers Snowflakes for Quality 2 Lb. Pkg.	Mortons Salt Plain or Iodized Each	29c	Potato Chips 25c They Are Fresh at Safeway Nalley's 3 Pkgs.	
Extracts Schilling's Vanilla or Lemon 2 oz. Bottle	Cigarettes Camels Are Fresh Ortn.	8c	P. & G. Soap 29c For the Laundry 10 Bars	
Fruit and Vegetable Savings	Tomatoes Firm for Slicing For Canning Grate 35c 7 Lbs.	15c	Kraft Cheese 14c Your Choice of This Fine Quality Cheese 1/2 Lb. Pkg.	
Potatoes Local Grown 9 Lbs.	Peaches Elbertas, Can Now. Limited Supply Grate	17c	Frigid Jel 14c For Fresh Desserts. All Flavors 3 Pkgs.	
Cantaloupes Extra Large Size. Locals 4 for		63c	Bran Flakes 9c Post's, for Breakfast Pkg.	
		19c		

SWIFT'S QUALITY STEER BEEF

- HAM, large slices, center cuts, ea. 9c
- Vegetable Shortening, 3 lbs. . . . 27c
- Fresh Dressed Hens, lb 16 1/2c
- Hamburger, lb. 9 1/2c
- Smoked Ham Shanks, Each . . 20c
- BACON, sliced Dixie squares lb 17 1/2c
- LAMB ROAST, shoulder, lb. . 10c
- LAMB STEW, lb. 5c

One Store—One Overhead
Holly at Main St.

Refresh yourself at lunch

Kellogg's
for Koolness!

PINE SLABS AND
SLABS
\$3.75 DOUBLE LOAD
VALLEY FUEL CO.