

**OLD STANDBYS OF KITCHEN UTILIZED BY HESTER HEATH**

"Dressing up the old standbys" is a favorite topic of Miss Hester Heath, who will conduct The Mail Tribune's cooking school on May 31, June 1 and 2 at Hunt's Crater.

Many Medford housewives are no doubt familiar with Miss Heath's work as she is well-known on the Pacific coast, where she has lectured to tens of thousands of women. She also conducted the very successful school last spring at the Holly theater in this city.

"You don't have to have expensive ingredients," says Miss Heath, to prepare a delicious and unusual dish. Just take the good "old standbys" that are on your kitchen shelves and with a dash of ingenuity and a burst of song (don't forget the song), you can whip up a concoction fit for the gods." Miss Heath believes that every good housewife should keep at least an eye and a half on the family budget and for that reason her lectures will be couched in most practical terms. She will show ways of combining left-overs so happily that not a soul would suspect they were left-overs.

Here are a few suggestions Miss Heath offers for "dressing up" everyday dishes:

The usual egg sauce served with fish can be made a new and interesting dish by adding some sliced blanched almonds and some whole Malaga grapes. It sounds impossible, I know—but just try it!

Lemon garnishes make foods look better and taste better. Fish and oysters lead a flavorless existence when served without the tartness.

Apples—their cavities stuffed with figs and a bit of grated orange rind, or "Orange-Rutts" and raisins—and baked, are a far cry from the conventional baked apple.

"Here's an interesting way to use up left over boiled potatoes. Slice cold boiled potatoes the long way, dust with salt and paprika and put a thin slice of cheese between each two pieces. Brush with melted butter. Put in oven and bake until brown.

"Put a spoonful of creamed chicken (or left-over meat) between baking powder biscuits rolled thin. Press together and bake in a hot oven.

"Omelette Aux Petite Pois"—sounds grand, doesn't it? But it's nothing more than a half cup of left-over buttered or creamed peas poured into the ordinary omelette as the edges begin to set, then rolled or folded over and served on a hot platter. Garnish with a hedge of parsley or broiled, curled bacon.

"The next time you order pork chops, have a pocket cut into them and stuff them with a bread dressing, fry slowly or bake until done. You will need extra thick chops to prepare in this manner—they are delicious!"

Miss Heath has prepared a most interesting program for Medford housewives. Plan to attend all four sessions, beginning Tuesday, May 30. The school will be conducted in Hunt's Craterian theater from 2 to 4 o'clock each afternoon.

**AWARD JENNINGS \$2250 JUDGMENT IN EMPIRE DEAL**

Judgment by default was granted former Sheriff Ralph C. Jennings against Dr. R. J. Clancy, former secretary of the Empire Holding Company, in an order and decree handed down yesterday in circuit court, in the sum of \$2250, with interest at 4 1/2 per cent since September and October, 1931.

Jennings, the complaint filed in the action sets forth, in September, 1931, purchased 30 shares of Empire Holding Company stock, giving \$2000 cash and a promissory note for \$1000. The payment was made in cash and California Oregon Power company stock.

The sale contained an indemnifying agreement whereby Jennings was to receive re-payment at any time he became dissatisfied. When the Empire Holding Company collapsed and criminal and civil actions multiplied throughout the state in 1932, Jennings requested the return of his collateral, with interest at the same rate he would have secured for his money if left in bank or stock.

Several weeks ago Mayor E. M. Wilcox, who made a \$5000 investment in Empire Holding Company stock, brought legal action and secured cancellation of a promissory note and mortgage issued in payment of Empire Holding stock.

It is reported that Medford and Jackson county investors spent close to \$100,000 in purchase of the stock in 1931-32. Afterwards the company collapsed and prosecution of its officers followed.

**STATE LEADERS WILL BE BANQUET GUESTS**

Mrs. Zeada Ireland and Mrs. George Keller, president and state chairman of the Women's Greater Oregon association, will be in Medford Friday to attend the dinner which is being given at the Hotel Holland in their honor and for the Prescott memorial fund.

Mrs. Ireland will speak over KMBD from 3:15 to 3:30 Friday afternoon. Only Oregon products will be served at this dinner and tickets are now on sale. Those wishing tickets should phone Mrs. Terrel Deck, 1675, or call the Holland Hotel.

**WHY TAKE RISKS DECORATION DAY ...TRADE IN YOUR OLD TIRES**



as part cash for Ward's RIVERSIDES

Why take chances on your holiday trip with weak, worn tires when you can use them as part payment for Ward's best: our 4-Ply and 6-Ply Riverside De Luxe with 6 and 8 plies under the tread?

Our Riverside DE LUXE tire is made in 53 SIZES to meet the super heavy duty needs of both the high speed small car and the fastest, big machine.

- ... Extra thick tread
- ... Extra strong body
- ... Extra thick walls
- ... Extra safety bead
- ... Latex coated cords
- ... Center traction design

We Guarantee every Riverside DE LUXE Tire to be a First Quality tire throughout, and we guarantee it to give satisfactory service without limit as to time used or mileage run.

Liberal Trade-In Allowance also on Power Grip traction tread tires for mud, sand, clay; and Air Cushion tires, easy riding on light cars.

**RIVERSIDE DE LUXE**

Size	4-PLY (6 plies under tread)	6-PLY (8 plies under tread)
29x4.40-21	\$5.10	\$7.25
30x4.50-21	5.65	7.25
28x4.75-19	6.20	7.60
29x4.75-20	6.40	7.85
29x5.00-19	6.60	8.30
28x5.25-18	7.45	9.15
31x5.25-21	8.20	9.95
29x5.50-19	8.55	10.25
32x6.00-20	11.40	
32x6.50-20	13.20	

Other Sizes up to 7.50-18 priced similarly low  
**TRUCK TIRES:**  
 Riverside Mate Heavy Service  
 Tires 30x5, \$12.50—32x6, \$21.00.  
 Free Tire Mounting

**Picnic Jug**

1/2 Gallon Food or Liquid  
 Hot 24 Hrs. Cold 48 Hrs.



**79c**

It's cork insulated with steel jacket and a cork lining easy to clean. 3 1/2 inch opening, and you can use cover for a cup.

**Auto Greases**  
 Riverside Transmission Grease

**16c lb.**



In 5-lb. cans  
 Cup Grease  
 1 lb. ....18c  
 5 lbs. ....78c  
 High Pressure Grease  
 1 lb. ....18c  
 5 lbs. ....85c

**Tennis Ball**

**29c**

Ward's New "Champ" Approved by U. S. L. T. A. Increased Wool cover.



**Golf Balls**

**89c**

Equal to any 50c ball. Rubber center and winding. Balata cover.



**Ready For The Big Ones? Our Finest Tackle Costs 25% Less!**

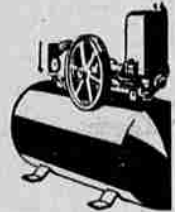
- Fish Basket—Full leather bound ..... **\$1.59**
- Tackle Box with new style cantilever tray ..... **\$1.10**
- "Kids" Fish Line—10 yards of high quality silk line. Special ..... **10c**
- Salmon Eggs—A fine quality egg of the latest pack ..... Jar **19c**
- Level Wind Reel—a very substantial, well made reel ..... **95c**



**Running Water For A Few Cents Daily!**

**Water System**

**\$57.00**



Electric! Automatic! Maintains city water pressure for a few pennies daily. For wells to 22 ft. in depth. Built to give carefree service.

**Save \$5 to \$10! It's New! A Specially Equipped**

**New Bicycle**

**\$29.95**



The tires are Giant Stud Riversides. And it has Auto type horn, package carrier, electric headlight and wide base parking stand!

**Cuttyhunk Line**

**79c**

Threaded Irish linen. For heavy fishing. 50 yards of 90 lb. test.



**Camp Cot**

**\$1.95**

One piece construction. Steel plates at strain points. White duck top. Light, sturdy.



**Camp Stool**

**37c**

Select hardwood. Bright striped woven top. 16 in. high.



**Camp Stove**

**\$4.48**

Instant lighting Gasoline Camp Stove. Folds like suitcase for carrying.



**Folding Chair**

**\$1.55**

Firm and steady. Var-nished hardwood frame, striped four-color seat.



**Salmon Rod**

Mottled bamboo waterproofed. Fine spiral guides. Nickeled trim. Non-slip grip. **\$1.79**

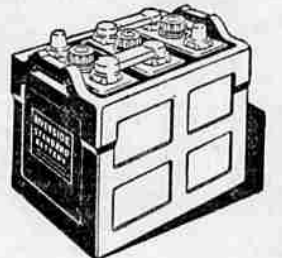


**Yes, Mr. Motorist, We Beat a Make \$3.25 Higher With Our**

**Riverside Standard Battery**

**\$3.49**

With Your Old Battery



Guaranteed 12 Months—A battery proved by test to outlive others similarly priced—even a make sold for \$3.25 more. 13 plates full size, full thickness—instead of 11 ordinary plates. This entire battery is built basically the same as Ward's best battery at higher prices.

**Save 40% to 50%—Use Ward's 100% Pure Pennsylvania Oil**

In Your Own Container It Is

**16c** quart



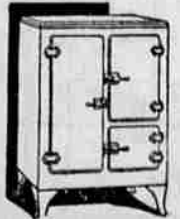
Ward's Riverside 100% Pure Pennsylvania Oil is from Bradford crude which commands highest price of ANY crude oil. When sold in service stations oil of this quality costs you 30-35c a quart.

**Save Food! Save Ice! Save Money!**

**Ice Boxes**

25% less than last year!

**\$17.50**



30 lb. size, White  
 SAVE ICE—insulated to make box air-tight, moisture-proof. SAVE FOOD—even temperature means no waste. SAVE 25% at Ward's.

**More Whip! Faster Return! Ward's Open Throat Style**

**Tennis Racket**

**\$3.98**



Full rounded frame of straight grained ash with maple facing around entire lower part. 100 lb. moisture proof silk strings.

**MONTGOMERY WARD**

**Look! We've Made the Inside of the Tub a Washboard!**

**Wardway Electric Washer**

**\$47.50**

\$5 Down

Another Improvement! Ripples in the sides of the tub! Your clothes brush gently against the ripples like washboard action. It washes cleaner—faster—you can do 5 persons' washing in less than 30 minutes! This New Wardway is put in your home for \$5 Down; \$1.25 a week plus small carrying charge.

