

YANKEES PUNCH MAY BE OFFSET BY KIKI CUYLER

Illness of Babe Ruth Seen As Evening Up Bat Power in Forthcoming Series—Cub Ace 'Hot' in Final Days

By ALAN GOULD
Associated Press Sports Writer
NEW YORK, Sept. 22.—(AP)—Unless the leading exponent of the strategic value of the home run, Babe Ruth, is in much improved health a week hence, the Yankees likely will not show any advantage over the Chicago Cubs insofar as the cleanup blows of their outfielders are concerned in the forthcoming battle for the baseball championship of the world is concerned.

It is true the Yankees, on paper, show a heavier punch but this is offset by the fact Ruth has to contend with a bigger "tummy ache" than all the rest of the outfield combined.

Babe Better Be Good

If the Babe is not in there next week doing something besides rotting defiance to the enemy, on wobbly legs, the Cubs may pluck up sufficient courage forthwith to chase the Yankees all over Colonel Ruppert's expensive premises in the Bronx, to say nothing of what may happen when the Bruins have their home-town cheers to spur them on.

The only real difference between the two outfield groups is represented by the batting averages of Ruth and Kiki Cuyler, who patrols right field for the Cubs. The unofficial season figures are .348 for Ruth and only .288 for Cuyler, but that doesn't tell the real story.

Cuyler 'Hot' in Finish

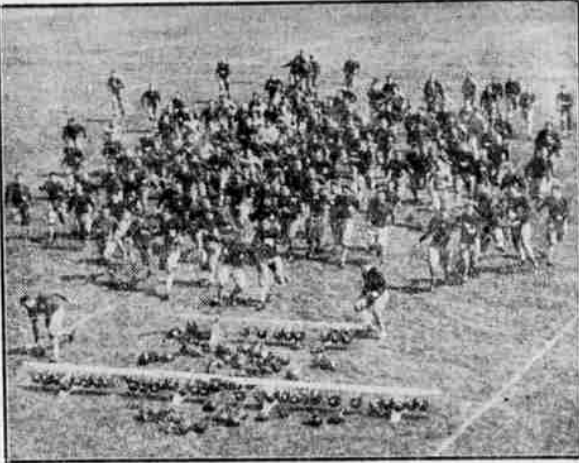
Where Ruth has been laid up and lost considerable of his much-needed strength, Cuyler has come down the home stretch like a forest fire fanned by a gale. The fleet Kiki has been producing the big cleanup wallop when the Bruins needed it. He had such a poor start over the first two or three months of the season that his present average does not disclose he has been hitting well over .300 for the last six weeks.

Taking these facts into consideration, plus Cuyler's far superior defensive skill and base-running ability, the Cubs figure to concede little or nothing to their American league rivals in the outfield.

Here are the comparative batting records of the outfielders:

G. AB. R. H. Pct.
Stephenson144 574 86 187 .326

BEARS OPEN FOOTBALL SEASON



University of California's gridiron hopefuls were off to a flying start when practice opened at the Berkeley training camp. They are shown making a dash for their final piece of equipment, the headgear. (Associated Press Photo)

Moore	115	427	58	130	.304
Cuyler	105	427	58	122	.286
Guidici	55	52	14	20	.244
Demaree	30	49	3	11	.224
New York Yankees:					
G. AB. R. H. Pct.					
Ruth	128	443	117	154	.348
Hogg	42	52	17	18	.346
Combs	139	572	140	186	.325
Chapman	147	564	99	171	.303
Byrd	99	209	45	59	.282

HOW THEY STAND

(By the Associated Press)

Coast		
Portland	102	75 .576
Hollywood	99	78 .559
San Francisco	91	84 .520
Sacramento	92	85 .520
Los Angeles	90	86 .508
Seattle	87	87 .500
Oakland	77	98 .440
Mission	66	110 .375

American		
New York	104	46 .693
Philadelphia	93	57 .620
Washington	90	60 .600
Cleveland	85	64 .570
Detroit	72	73 .497
St. Louis	62	87 .416
Chicago	48	100 .324
Boston	42	108 .280

National		
Chicago	89	62 .589
Pittsburgh	83	67 .553
Brooklyn	79	72 .523
Philadelphia	77	73 .513
Boston	76	65 .500
New York	69	80 .463
St. Louis	69	80 .463
Cincinnati	59	92 .391

DUCKS MAINTAIN 3-GAME MARGIN

(By the Associated Press)
The Ducks went on another run-scoring spree Wednesday to trim Los Angeles, 8 to 5, in the second game of the series at Portland and maintain its three-game lead over the second-place Hollywood club. The Stars evened their series with Oakland at one and one by winning the Wednesday night game at Los Angeles, 4 to 1.

Sacramento went into a tie with San Francisco for third place in the league standings by beating the Missions, 9 to 6, while the Seals were losing to the Indians at Seattle by the same score.

Abbot Signed To Manage Beavers

PORTLAND, Ore., Sept. 22.—(AP)—Spencer Abbot, manager of the pennant-bound Portland Beavers of the Pacific Coast baseball league, has been signed to manage the team again in 1933. Abbot took charge of the team at the beginning of the 1931 season.

PRINK'S TEAM FACING FIRST TEST FRIDAY

EUENGE, Ore., Sept. 22.—(AP)—University of Oregon's football machine will get its first trial of the 1932 season here Friday night against Pacific University.

The game not only will be the first of the season but will be the first under the direction of Prink Callison, new head coach.

O.S.C. Willamette Battle Saturday

CORVALLIS, Ore., Sept. 22.—(AP)—The Oregon State college football team will play its second non-conference game of the season against Willamette university here Saturday night at 7:30 o'clock.

NOTICE—I am now managing Frank's Sandwich Shop, 21 N. Bartlett and will not be responsible for debts contracted by former mgr. Caroline Roney, after Sept. 10, 1932. Fred Van Noy.

KLAMATH FALLS—Plans being drawn for new overhead crossing here.

TIGERS DRILL FOR SATURDAY CLASH WITH WEED SQUAD

The Medford high school football squad, under the direction of Coach Darwin K. Burgher, will this evening complete its heavy drilling for the game Saturday afternoon, with the Weed, Calif. team and will indulge in a light practice tomorrow night. The game will be played at the junior high school field, and will be the first clash of the year for the Burghermesters. The game will start at 2:00 o'clock.

The Weed team, with two colored boys in the line-up, was defeated Saturday by Klamath Falls, 33 to 0, and it is expected that the locals will try to exceed this score. The Pelicans feel that Medford is the big stumbling block in their drive for a state championship, and have already adopted as their slogan "On to Portland."

The Grants Pass squad, under the direction of a new coach, will make a bid for conference honors. The line will average 170 pounds, and the backfield about the same. They are all hefty youngsters, and are not doing any pre-season crowing. They are inexperienced, with but few lettermen.

Little is heard from the Ashland team except that under the coaching of Don Faber, former Willamette University star, and Central Point boy, they are practicing daily. The squad comprises 35 youths.

RECALL PETITION PEDDLER KNOCKS JUDGE ON VISITS

Circulation of a petition seeking the recall of Circuit Judge H. D. Norton was underway in the Foots Creek district the forepart of the week, according to reports received yesterday. The recall petition "shover" was described as a solicitor for a county newspaper who sought signatures and subscriptions at the same time. The report further stated that the circulator bitterly criticized Judge Norton. He met with scant success, the report said.

According to information from Ashland, recall petition "shovers" there have secured close to 150 names after a week of intensive work and solicitation. T. L. Breechen of Ashland said yesterday that he had been asked to sign the recall petition and had ordered the solicitor out of his place of business.

Reports from Applegate, Rich and Jacksonville districts early this week said that circulators had canvassed the areas, but had met with rebuffs.

There is still no word on the identity of the fathers of the recall movement, which has met with disfavor in all parts of Jackson and Josephine counties. Avowed proponents of the recall have attributed its creation to "spontaneous combustion" and declared "it makes no difference who started the recall—it's started."

HELEN WILSON NEW ENDEAVOR LEADER AT PRESBYTERIAN

Helen Wilson, III, was elected president of the senior Christian Endeavor of the Presbyterian church Sunday evening. Susan Dyan is retiring leader. Other officers elected were: Vice-president, Margery Paley; secretary, Richard Roberts; treasurer, Dolph James; song leader, Alice Prock; prayer meeting chairman, Jean Prock; social chairman, Phyllis Johnson; missionary chairman, Helen Crane; pianist, Connie Moore; lookout committee, Frances Tucker.

The new officers will work out the fall and winter schedule of activity for the society immediately and many new changes are being planned.

With the arrival, October 9, of Rev. Wm. J. Howell, new pastor, the year will start with new enthusiasm and leaders anticipate a very successful season.

Helen Wilson, III, new president, urges that all members of the organization attend the fall meetings consistently in order that the scope of the society may be increased in membership and in service.

Miss Emily Fraser, Brown and Edward L. Reames were C. E. advisors during the past season.

HEART BALM SUIT TRIAL SCHEDULED IN CIRCUIT COURT

The breach of promise suit of Marguerite Kirksmith of Seattle against Robert W. Frame of Central Point, for \$25,000 alleged damages, which has been pending for a year or so, was set for trial next Monday by Circuit Judge H. D. Norton this morning.

The court directed that Seattle attorneys of the defendant be advised by telegraph of the trial date.

The plaintiff alleges that the defendant, during a courtship, made promises of marriage and further alleges that after she prepared for the nuptials the defendant married another.

Selection of a jury to hear the case of Mrs. Pearl Wilson and her husband, against the Rogue River company, was started this morning in circuit court. The action is based upon an alleged land sale, and failure to deliver title by the defendant company. Damages in the sum of \$25,000 are sought.

The Wilson's are represented by Attorney Gus Newbury, and the defendants by Attorney George M. Roberts.

KIWANIS PLANNING ZORN BILL STUDY

The next two meetings of the Medford Kiwanis club will be devoted to discussion of the Zorn-McPherson bill for merging of Oregon's schools of higher learning. Everett Faber, program chairman, announced yesterday that a speaker, favoring the bill, has been invited to address the next meeting of the club, and that the opposition will be allowed the program hour for expressing the other side of the question one week from next Monday.

A large attendance is urged for each meeting of the club, in order that all members may be fully informed regarding the bill.

BIRTHS

Born to Mr. and Mrs. J. C. Marbach of 114 Almond street, a daughter, weighing five pounds, two ounces, at the Community hospital today.

Be correctly corrected by ETHELWYN B. HOPPMANN'S Sixth & Holly streets

Phone 542. We'll haul away your refuse. City Sanitary Service.

SAN FRANCISCO'S NEW HOTEL OXFORD

Every Room with Tub and Shower
Single \$2.00 & \$2.50
Double \$2.50 & \$3.00
Twin Beds \$4.00
NOTHING HIGHER
Free Garage
Theodore A. Hesse, Mgr.
MARKET and MASON STS.

Los Angeles and back \$30!

ONE WAY...\$24

On sale every day. 16 day return limit on the roundtrip. You ride the fast "Shasta" in a modern reclining chair car.

Also good in tourist sleeping cars on trains carrying this equipment, overnight berth for as low as \$1.80.

Southern Pacific
J. C. Carle, Agent, Phone 34

ACTUALLY MUCH SHARPER

● When we say the Gillette BLUE BLADE is much sharper we mean that exactly. This is not a generality. We have a remarkable machine that proves the fact beyond doubt. Learn this for yourself. Try the Gillette Blue Blade tomorrow morning.

425,000,000 FIRST YEAR'S RECORD

Front Page News

THURSDAY, SEPTEMBER 22, 1932

THE TRUTH ABOUT WHITE OWL at 5c

Nickel buys Absolutely Same WHITE OWL Sold 14 Years at 7c and higher

Sold Without Premiums or Prize Contests JUST BETTER TOBACCO THAT'S ALL

THIS IS THE PLACE

Wm. C. C. Co. Inc. 1111 N. Commercial St. Medford, Ore.

VOL. 1 MONTHLY 11-179

Copyright 1932