

### MOTHER AND GIRL NEAR STARVATION; CARED FOR HERE

Mrs. Edna Johnson and her nine year old daughter, deserted a week ago by their husband and father, are held in the woman's ward of the county jail for Klamath county authorities. The mother and child fled from the Klamath county farm late Saturday, and were found yesterday by the state police, on the Green Springs mountain road.

Mrs. Johnson gave her reason for flight, that she "distilled to eat at the table with the men." The mother is suffering from privations of "nobbling," and is under observation. According to Mrs. Johnson's story, the family hails from Montana, and has been autoing the past three months over the northwest seeking work. Last week while traveling on the Dallas-California highway, the father forced his wife and child to leave the car, while he sped away alone. A day later the pair was found, in a famished condition by passing autoists, and taken to Klamath Falls. They were lodged at the county farm.

California, Montana and Oregon authorities are seeking the father for the cruel desertion. According to the authorities, Johnson has been an auto transient for several years, with no fixed abode.

The mother is in a pitiable condition from under-nourishment and worry. She asked the Klamath county agencies to place her under observation, as she feared her privations had affected her mind.

It is expected that Mrs. Johnson, a woman of close to 40 years, and her child will be returned to Klamath county late today.

### TWO MARYS HERE ON CRATER TRIP

Driving a Ford, which has taken them from Pomeroy, Wash., through Utah, Arizona and Oregon, "two Marys" arrived in Medford this morning bound for Crater Lake, which they expect to eclipse all other scenery they have viewed since leaving Washington, May 31.

Their proper names are Misses Mary Dixon and Mary Rice and they teach in the grade schools at Pomeroy. This trip constitutes their first one into Oregon and they were enthusiastic this morning in praise of a state which offers so much variety of scenery and climate.

"From warm and fertile valleys," they remarked this morning, "we dash into a cold cave, which over-whelms us with the beauty of its natural formations. Then out into green forests, on into the valley, and now we're headed for the snow again. We think it's wonderful."

### VETS TO DECIDE BONUS STRATEGY

WASHINGTON, June 27.—(AP)—The boys who came to Washington to get their bonus money will decide on Independence Day what to do next. Their executive committee has set July 4 for a convention at which the resignation of Walter W. Waters of Portland, Oregon, as commander-in-chief of the bonus expeditionary force will be considered.

At the same time, said W. S. Keyser of Cleveland, head of the convention committee, the former soldiers will try to set up a permanent organization coordinating the activities of all veterans of all wars.

### REV. CLOUD TO HOLD SERVICES IN J'VILLE

Rev. Valentine Cloud, a converted Assyrian Jew, will conduct a week's special services at the Packsonville Presbyterian church, it was announced today.

Reverend Cloud is a young minister, who recently graduated from the Moody Institute of Los Angeles. He will be assisted by a group of young people from Medford and Grants Pass. Special musical selections have been arranged for the meetings.

Services will be conducted each evening at eight o'clock, with the exception of Saturday.

### SAMS VALLEY ROAD GRADING UNDERWAY

Grading of the Sams valley secondary highway is now underway, with a force of 20 men at work. State funds are financing the construction, which is expected to take two months or more.

Insofar as it is possible, residents of the district are given employment. It is practically the only road work now in progress in the county.

### St. Helens Mill Opens In July

ST. HELENS, Ore., June 27.—(AP)—H. R. Hudson, manager of the Charles R. McCormick Lumber mill here, announced today the mill will resume operations between July 8 and 11. It has been idle since December.

Real Estate or Insurance—Leave it to Jones. Phone 798.

Hats cleaned, stocked, remodeled at M. & M. Dept. Store.

### FEHL MORTGAGE CASE COMES UP WITHIN 10 DAYS

Speedy disposition was made this morning in circuit court of the legal preliminaries, in the suit of Niedermeier, Inc., against the Pacific Record-Herald, and its editor, Earl H. Fehl. The session was for the purpose of bringing the case "at issue." It concerns foreclosure of a mortgage held by Niedermeier, Inc.

Circuit Judge Earl C. Latourette of Clackamas county, assigned to hear the case when an affidavit of prejudice was filed by Fehl against Judge H. D. Norton, granted the defense five days in which to file an answer, and the plaintiff five days in which to make reply. Judge Latourette announced that when the action was ready for hearing, he would come from Oregon City in an airplane. The court disagreed with the defense prediction, that the case would require three days. The court held that the proceedings would require but one day.

The matter required less than half an hour, and at its conclusion Judge Latourette departed. His wife and daughter accompanied him to southern Oregon.

Niedermeier, Inc., was represented by Attorney George M. Roberts, and Fehl by Attorney E. E. Kelly.

### BITING ATTACK ON G. O. P. FEATURE OF BOURBON KEYNOTE

(Continued from Page One)

regulate or prohibit the traffic in intoxicating liquors."

G. O. P. Rule Reviewed  
The temporary chairman went back to 1920 and reviewed the intervening years of Republican leadership.

The Harding administration he described as "the darkest chapter of public betrayal in the history of this or any nation."

On President Coolidge and Secretary Mellon he heaped the blame for "an orgy of speculation and inflation that had no foundation in real values."

"Stocks were manipulated, prices pyramided, then split up, then distributed among innocent people under the guise of fabulous financial hopes built up by the most gigantic campaign of official hallybooling ever witnessed in the annals of American history," he exclaimed.

Under President Coolidge, Barkley said, expenses of the national government increased "more than \$680,000,000." He gave credit to the present Democratic house for reducing President Hoover's requests for appropriations "by more than \$100,000,000."

Would Cut Bureaus  
He promised that the Democrats would "abolish every useless office, every unnecessary bureau and commission which has grown by what it fed on until the total has become an insufferable weight upon all the activities and resources of the American people."

"They will never be abolished by those who now operate them," he said. "A new Hercules must clean out these Augean stables."

In dealing with the tariff, Barkley proposed that the Democrats inaugurate friendly international trade conferences with a view to reopening normal trade channels in the world and make the tariff commission a fact-finding body for congress.

"For agriculture's relief, he advocated the enactment of laws setting up co-operative agencies through which the farmer may work out his own problems over a period of years, taking the government out of the "dubious adventure of speculation" in farm products, and installation of a head of the department of agriculture a secretary who has "some knowledge of the subject and some sympathy for those who struggle with it."

To Strengthen Bank System  
For strengthening the banking structure, he proposed giving consideration to revision of the federal reserve act to insure more direct contact with commercial banks and borrowers.

Speaking of unemployment, he ridiculed "fine spun" distinctions between local and national responsibility and deplored "sophomoric dispute over the identity of first aid" while the nation's "defenders or their dependents suffer from want or neglect."

Society, he said, must find a way by which members displaced by invention and advances may sustain themselves and their families in comfort and self respect.

He advocated the consideration of the five day week or the six hour day as a possible solution of employment problems growing out of the country's industrial advances.

Concluding, Barkley said "in all the generations of American history the people in every great crisis have turned to the Democratic party to lead them from the wilderness of disappointment and disaster."

Will Bring New Hope  
"It will be so in 1932," he shouted, "when the principles here announced and the leaders here chosen will in the name of a people betrayed, be considered and misled reformers for them a land despoiled and made barren by those who know not the ways of wisdom or of providence."

"Such a nation, such a people need only the glimmer of a new hope, the

THE SAN FRANCISCO BANK  
226 California St. (and Branches), San Francisco  
For the quarter year ending June 30th, 1932, a dividend has been declared at the rate of three and one-half (3 1/2) per cent per annum on all deposits, payable on and after July 1st, 1932. Dividends not called for are added to the deposit account and earn interest from July 1st, 1932. Deposits made on or before July 11th, 1932, will earn interest from July 1st, 1932.

H. H. HERZBER, Secretary.

Inspiration of a new goal, the stimulus of a new battle-cry, and the marching orders of a new commander. "That hope, that goal, that battle-cry, that commander we shall present to them ere we shall adjourn this convention. He will be the choice no

less of farm than city dwellers. He will be experienced and tested no less in national than in state affairs. When chosen to the high station whereunto we shall nominate him, we pledge his dedication to the service of the whole nation without regard to class or creed or section."

Lewis Station Has Supply of Pre-Tax Tires

A special purchase of Goodrich Cavalier and Commander tires ac-

quired before the tax went into effect are now on sale at the Lewis Super-Service station at the corner of South Front and Eighth streets at attractively low prices.

Automobile owners are urged to take advantage of this offer as once as the sale will continue only as long

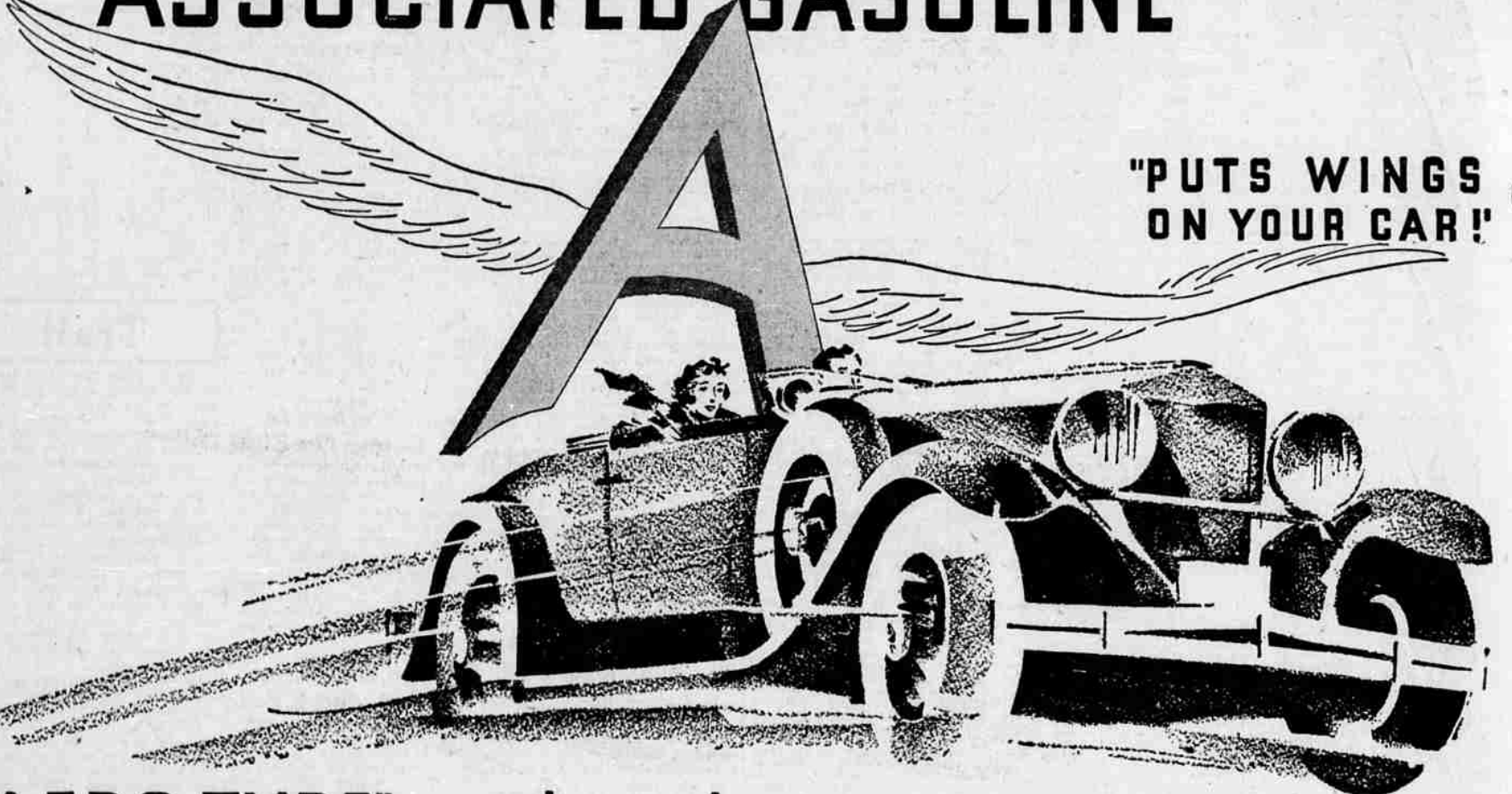
as the tires bought before the tax last, W. L. Lewis, manager, stated today.

Goodrich Cavalier and Commander tires are well-known for their longer wearing quality and safety features which make them outstanding in the field of tires on the market.

Sheridan.—Site occupied by Melby tire shop secured for establishment of new co-operative creamery here.

Good grades of lumber at cut prices. Medford Lumber Co. Graves Jewelry shop one block north of postoffice. Phone 499-W.

# Now!—the New "FLYING A" ASSOCIATED GASOLINE



"PUTS WINGS ON YOUR CAR!"

## "AERO-TYPE" — with road-proven octane stability — for Aeroplane performance in your car!

A NEW GASOLINE! Buoyant; swift; alert. Proved on the road in cars like yours. Aero-type — with the same octane stability required in aviation gasoline. Yet at no increase in price.

Back to fundamentals. Away with meaningless claims. Here are the facts about octane — facts proved on the road and not alone in laboratories. These are basic truths about a new, pure, crystal-clear gasoline made expressly to meet present day requirements. We told our engineers:

"Make a new gasoline that will give the motorist the finest results and the most for his money. See that it meets the toughest tests of today's driving."

The result—this new, aero-type gasoline, with

### 4 Exclusive Developments

1. OCTANE STABILITY. Gasolines with so-called "high octane" numbers but without octane stability are rejected for aviation service because

they knock under severe operating conditions. Associated "FLYING A" for your car has identically the same octane stability\* required in aviation gasolines. You get sustained anti-knock performance no matter how fast or hard you drive.

2. HEART-CUT OF THE CRUDE. Associated "FLYING A" is refined from the heart-cut only of selected gasoline crudes. Heavy fractions and too-volatile fractions are rejected. That's how you get aero-type quality, for aeroplane performance in your car. You need not fear dreaded vapor-lock—those "popping," gassy fractions are gone.

3. EQUI-FRACTIONATING PROCESS. This "cream of the crude" then goes through our exclusive equi-fractionating process to assure all 5 vital performance qualities—Starting, Pick-up, Power, Speed and Mileage—not just one alone. A truly balanced motor fuel is the result.

4. CLIMATICALLY CORRECT. Wherever you drive you'll find Associated "FLYING A" specifically refined for climatic conditions there and then. We studied 10-year temperature records

for districts and seasons. Now, 4 times a year we adjust your Associated "FLYING A" in accord with the weather in each of the 4 coast sections. This seasonal adjustment assures 5-quality performance at all times.

Today you can prove these exclusive developments for yourself, with a tank-full of Associated "FLYING A" Aero-type Gasoline from the red, green and cream pump. Its smooth, dynamic, quiet performance is the result you've been looking for in gasoline.

\*"Octane numbers" are based on laboratory ratings. In actual road performance they fail to indicate anti-knock efficiency. Their value breaks down under road operating conditions. Hours of driving in cars like yours proved the unexcelled octane stability of Associated "FLYING A" Gasoline at all speeds and under every driving condition. "Octane numbers" mean nothing; it's road-proven octane stability that counts.

Try a tank-full Today!



Tune in—Associated Spotlight, 90-minute radio extravaganza, every Saturday, 8:30 p. m. — KFI—KGO—KGW—KOMO—KHQ—ASSOCIATED OIL COMPANY